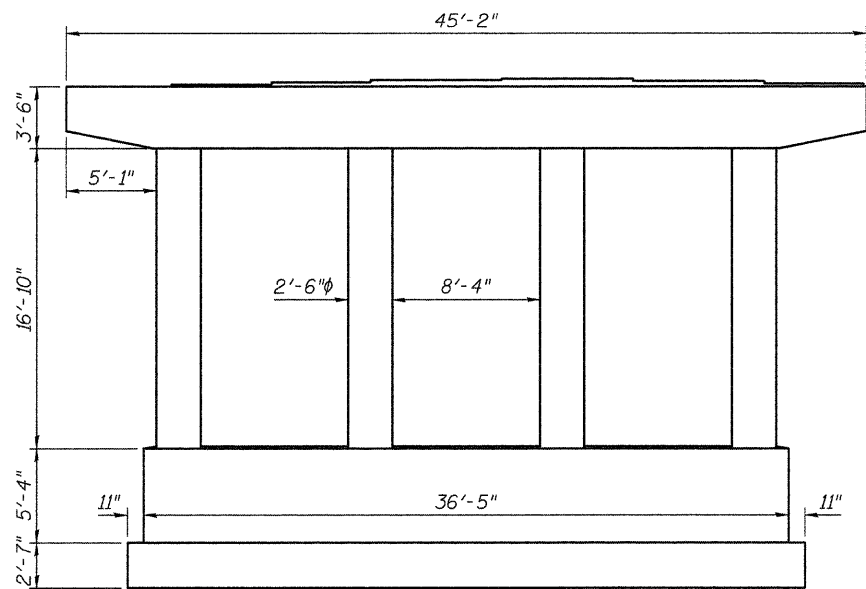
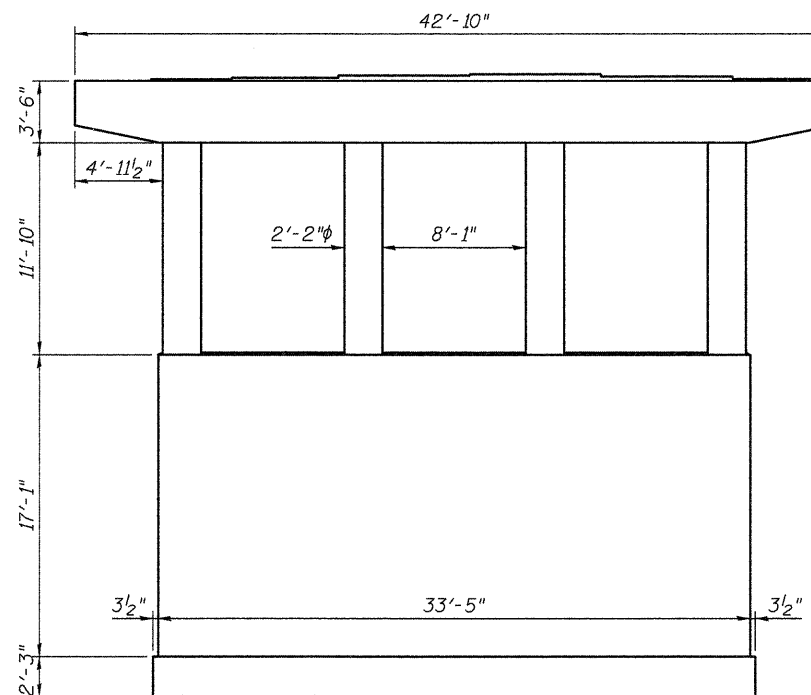


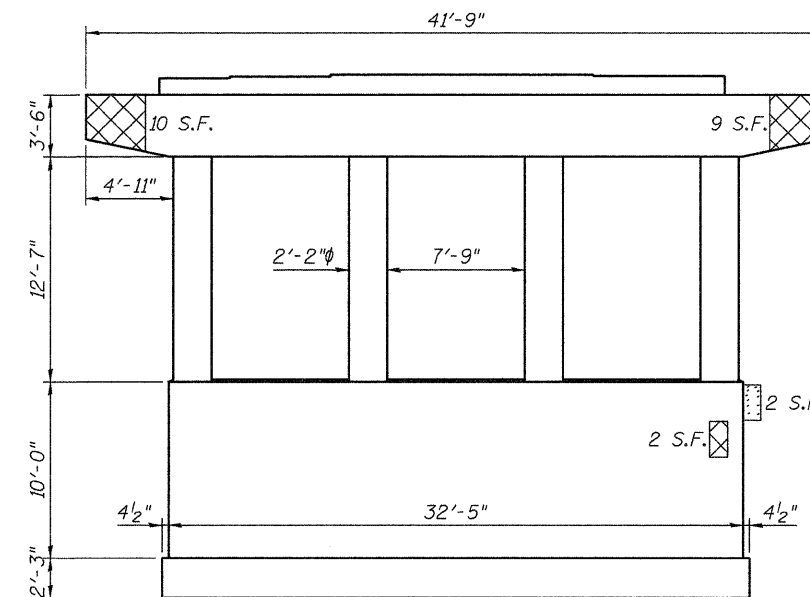
STATE OF ILLINOIS  
DEPARTMENT OF TRANSPORTATION



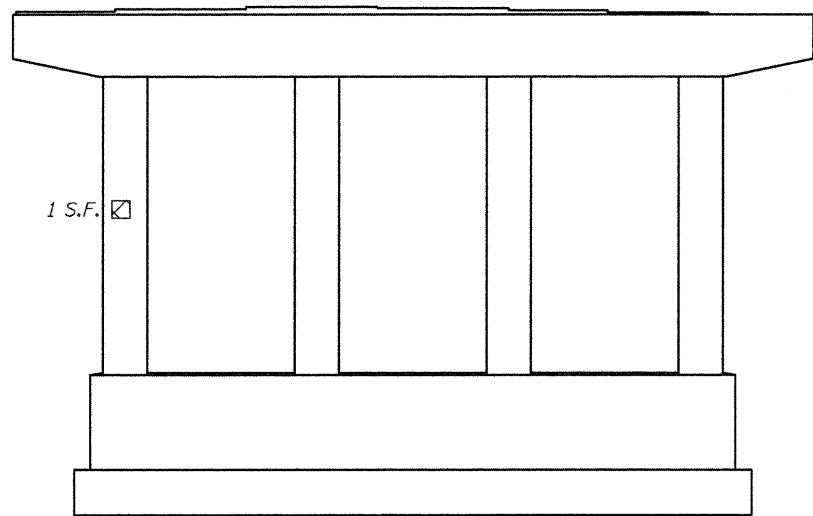
**PIER 1 - SB**  
(Facing North)



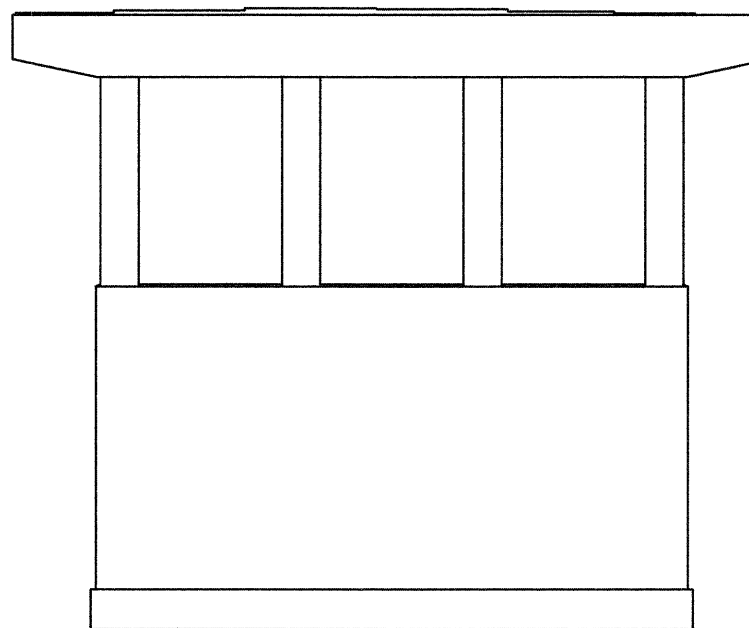
**PIER 2 - SB**  
(Facing North)



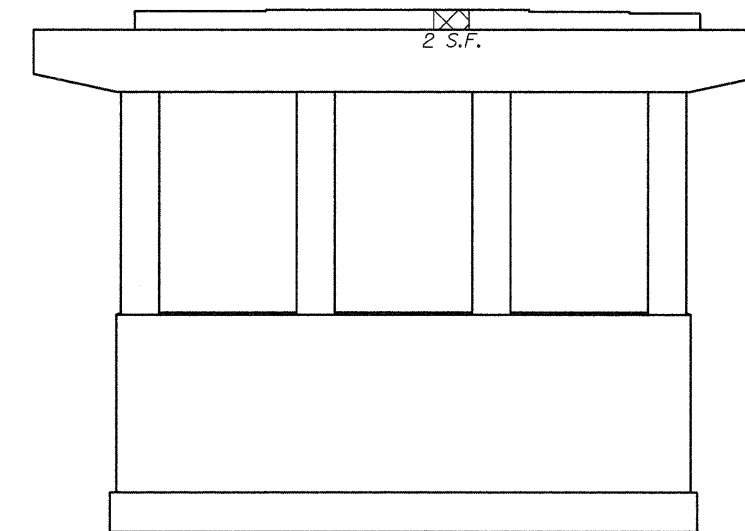
**PIER 3 - SB**  
(Facing North)



**PIER 1 - SB**  
(Facing South)

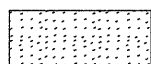
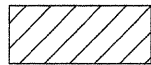




**PIER 2 - SB**  
(Facing South)



**PIER 3 - SB**  
(Facing South)

**LEGEND**

-  Hollow or Unsound Concrete
-  Spalled Concrete
-  Spalled Concrete with Exposed Reinf.
-  Hairline Crack

**Notes:**  
Pier Condition Survey performed 9/16/2009.

Plan quantities assume that areas of "exposed reinforcing" will be repaired.

Repair areas are estimated, the Engineer shall determine actual repair locations and record them on the As-Built plans.

**BILL OF MATERIAL**

Item	Unit	Total
Structural Repair of Concrete (Depth = < 5")	Sq. Ft.	24

**JD Johnson, Depp & Quisenberry**  
CONSULTING ENGINEERS  
Springfield, Illinois

DESIGNED: JDQ	DRAWN: SJS
CHECKED: DCD	CHECKED: DCD

**PIERS (SB)  
STRUCTURE NO. 058-0101(NB) & 0102(SB)**

SHEET 23 OF 26	F.A.P. RTE. 322	SECTION 158-201RS	COUNTY MACON	TOTAL SHEETS 151	SHEET NO. 88
	STA. 133+62.02			CONTRACT NO. 74150	
FED. ROAD DIST. NO.		ILLINOIS FED. AID PROJECT			

FILE: J:\JDO\110177 IL-DT\110177 US51Brdge Repairs\1-US51bus-ICRR\058010-74150-023-piers-SB.dgn  
USER: DCD  
DATE: 04/09/2010 12:22:40