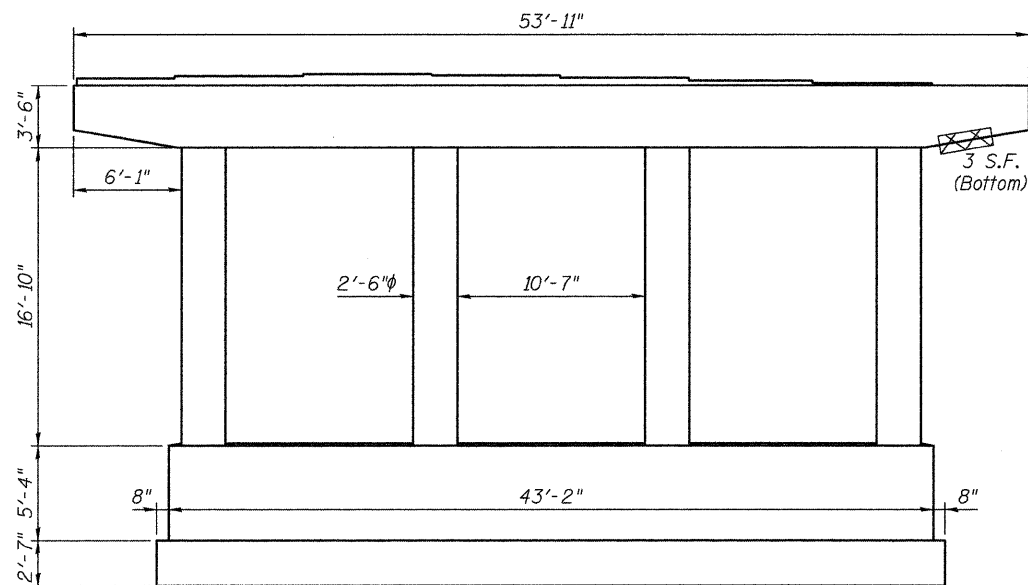
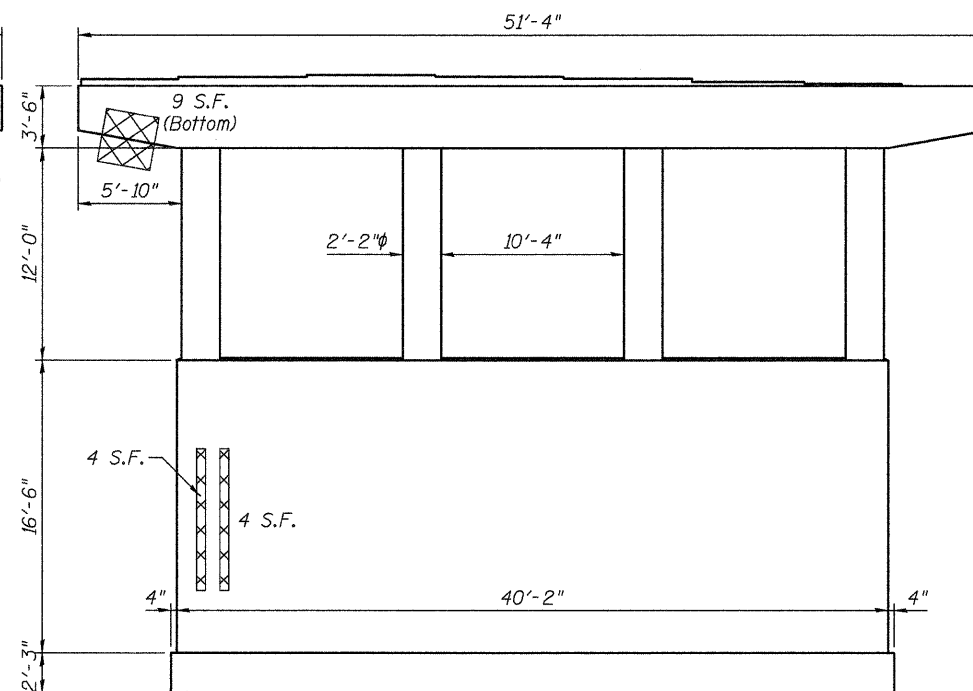


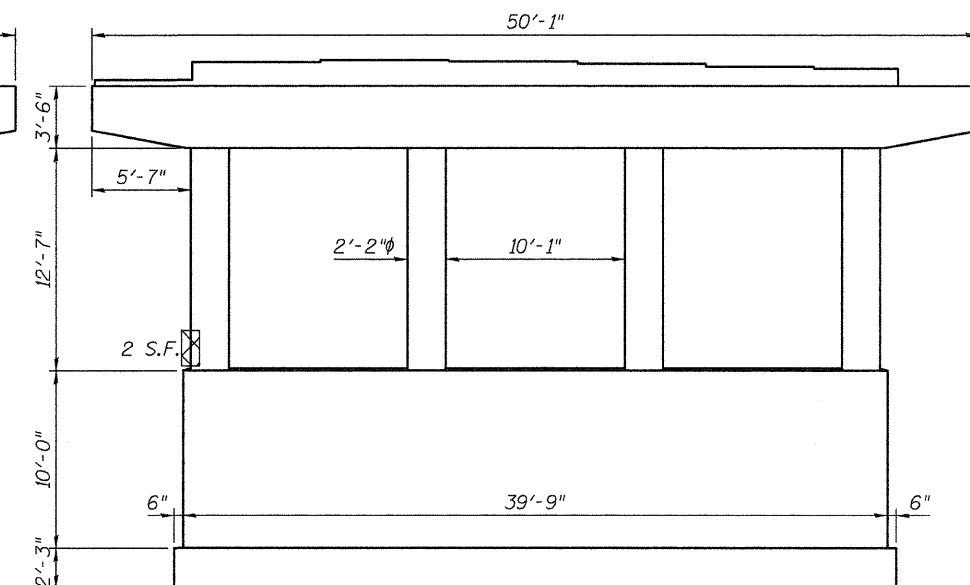
STATE OF ILLINOIS
DEPARTMENT OF TRANSPORTATION



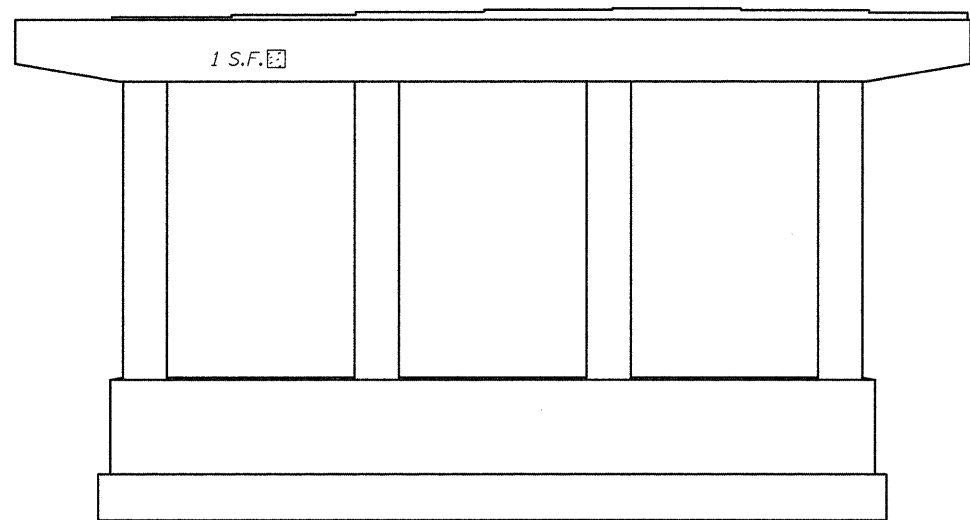
PIER 1 - NB
(Facing North)



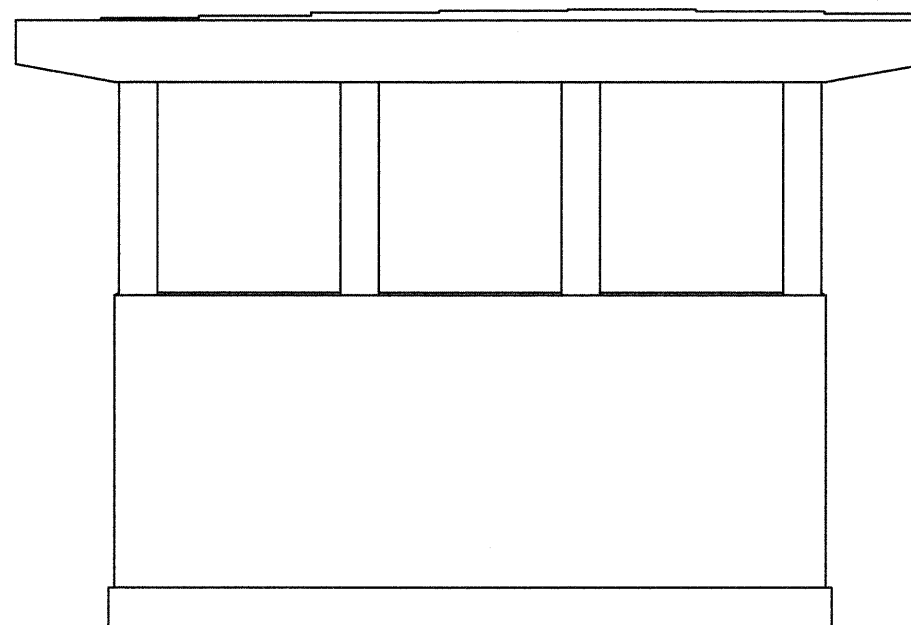
PIER 2 - NB
(Facing North)



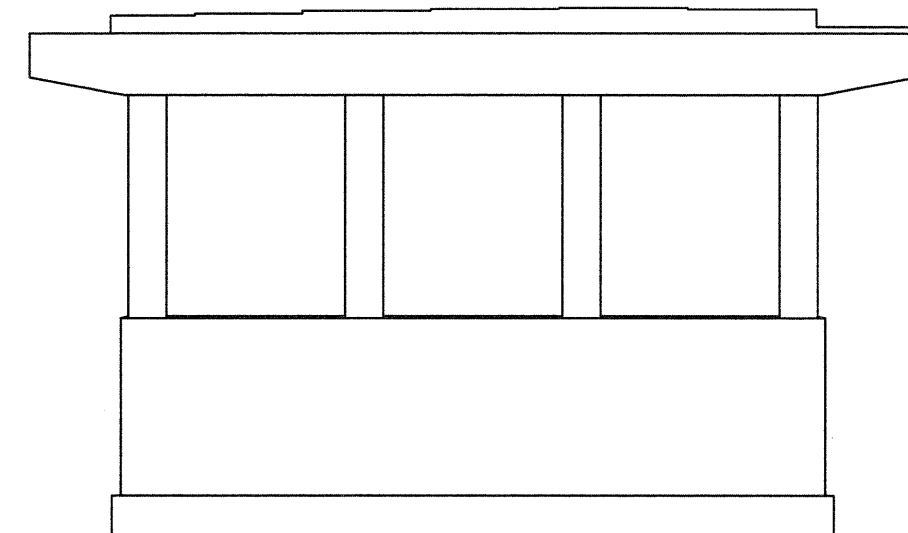
PIER 3 - NB
(Facing North)



PIER 1 - NB
(Facing South)

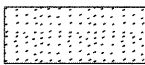





PIER 2 - NB
(Facing South)



PIER 3 - NB
(Facing South)

LEGEND

-  Hollow or Unsound Concrete
-  Spalled Concrete
-  Spalled Concrete with Exposed Reinf.
-  Hairline Crack

Notes:
Pier Condition Survey performed 9/16/2009.

Plan quantities assume that areas of "exposed reinforcing" will be repaired.

Repair areas are estimated, the Engineer shall determine actual repair locations and record them on the As-Built plans.

BILL OF MATERIAL

Item	Unit	Total
Structural Repair of Concrete (Depth = < 5")	Sq. Ft.	22

JD Johnson, Depp & Quisenberry
CONSULTING ENGINEERS
Springfield, Illinois

DESIGNED: JDQ	DRAWN: SJS
CHECKED: DCD	CHECKED: DCD

PIERS (NB)
STRUCTURE NO. 058-0101(NB) & 0102(SB)

SHEET 24 OF 26	F.A.P. RTE.	SECTION	COUNTY	TOTAL SHEETS	SHEET NO.
	322	(58-20)RS	MACON	151	89
		STA. 133+62.02	CONTRACT NO. 74150		
		FED. ROAD DIST. NO.	ILLINOIS FED. AID PROJECT		

FILE: J:\JDD\10177 IL-DTVM#8 US51 Bridge Repair\US51\058010-74150-024-piers-NB.dgn
USER: DCD
DATE: 04/09/2010 12:22:42