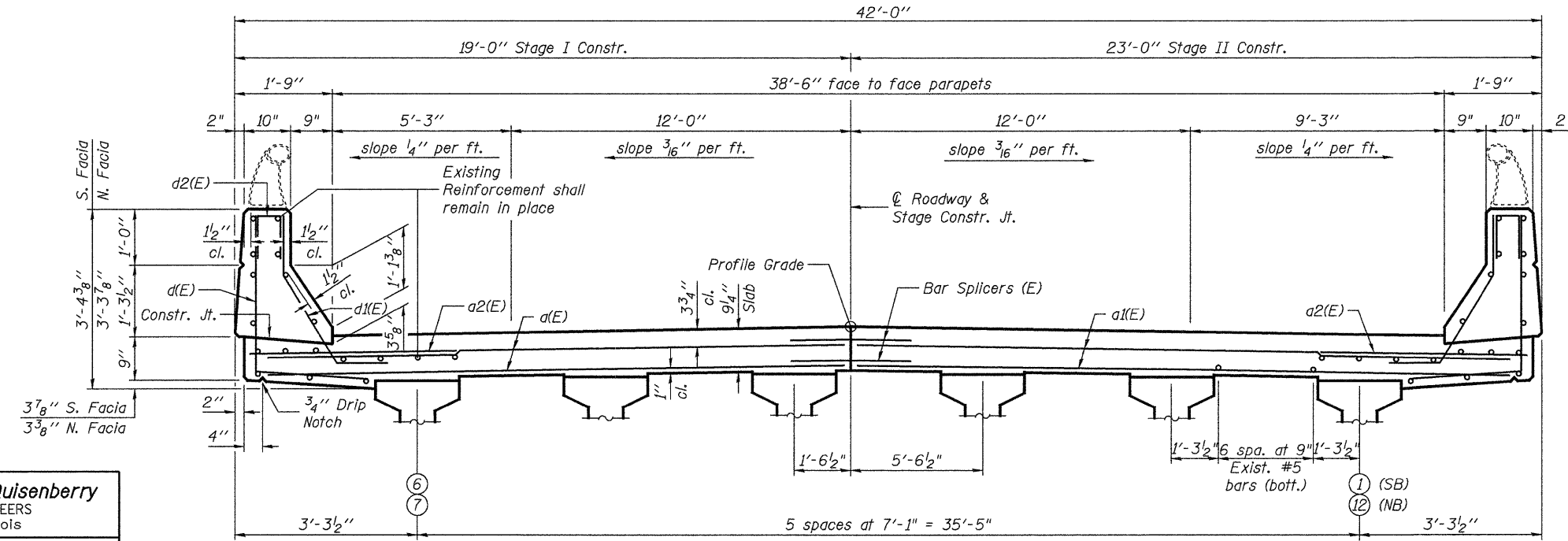
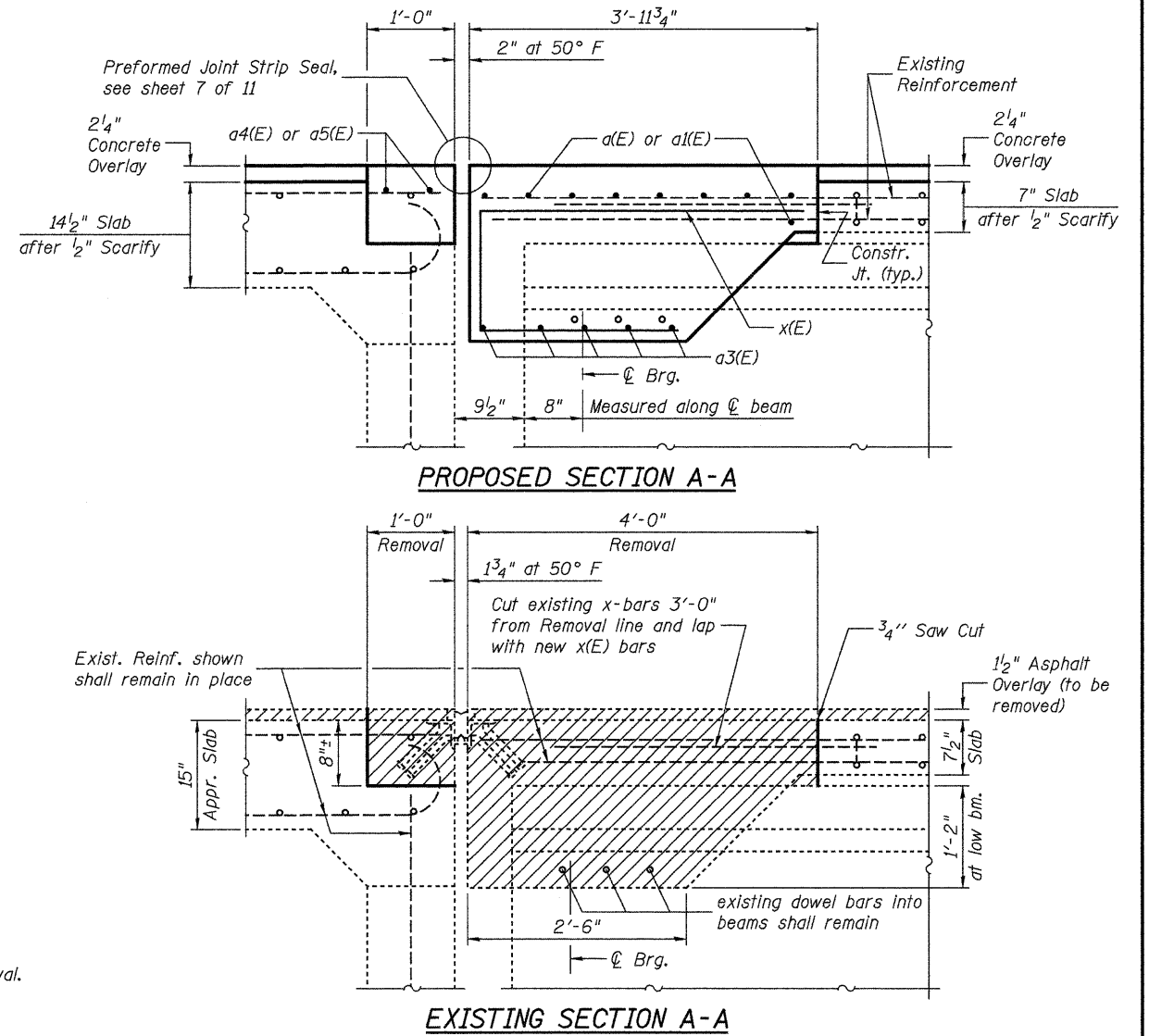
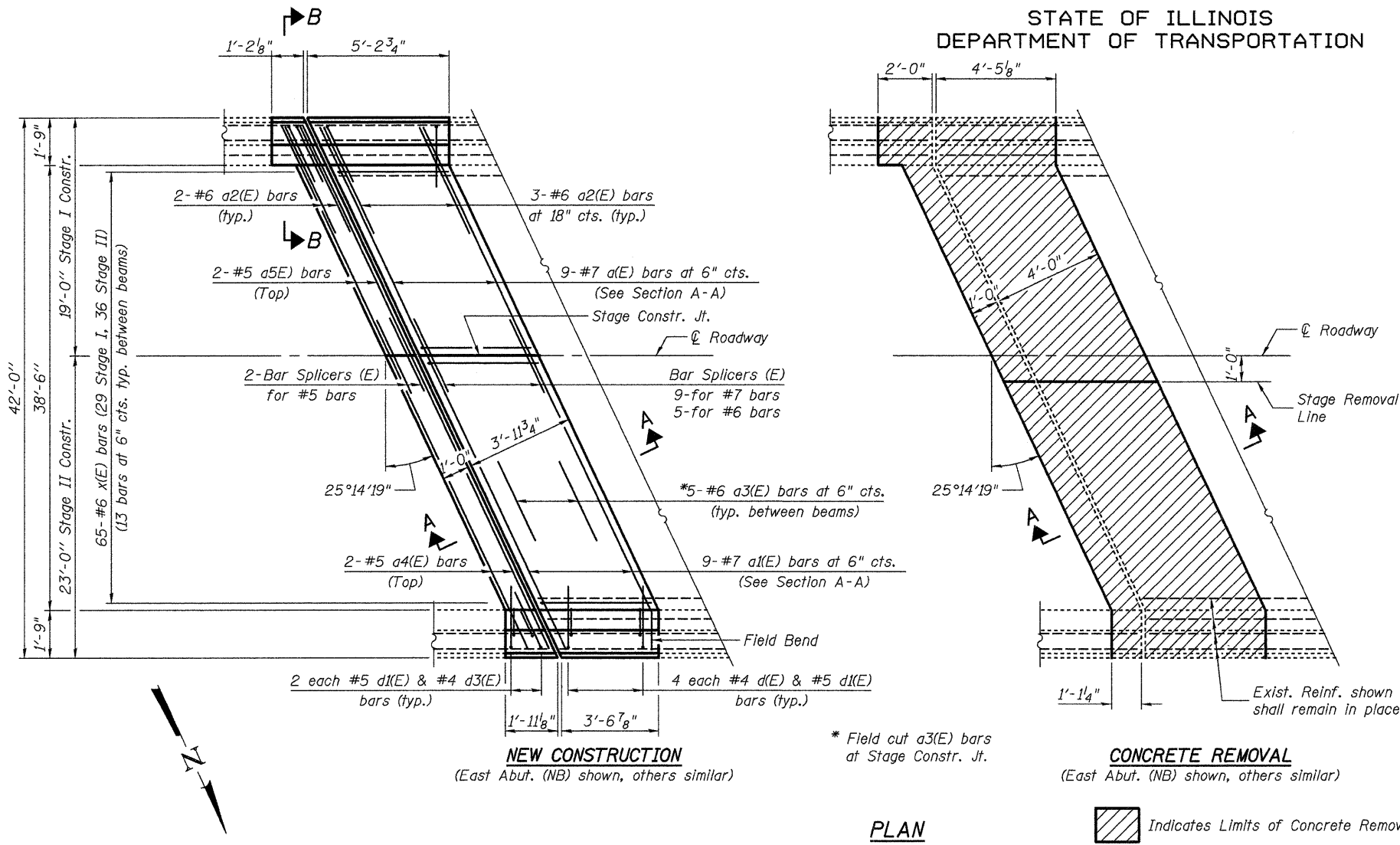


STATE OF ILLINOIS
DEPARTMENT OF TRANSPORTATION



Notes:
For Section B-B, Parapet Details and Bill of Material see sheet 6 of 11.
The Contractor shall use extreme care during concrete removal so as not to damage the PPC I-beams. Any damage is to be repaired at the Contractor's expense.

JD Johnson, Depp & Quisenberry CONSULTING ENGINEERS Springfield, Illinois	
DESIGNED: JDQ	DRAWN: PTR
CHECKED: DCD	CHECKED: DCD

SUPERSTRUCTURE (SB & NB)
STRUCTURE NO. 058-0104(NB) & 0105(SB)

SHEET 5 OF 11	F.A.P. RTE.	SECTION	COUNTY	TOTAL SHEETS	SHEET NO.
	322	(58-20)RS	MACON	151	96
STA. 142+55.53		CONTRACT NO. 74150			
FED. ROAD DIST. NO.		ILLINOIS FED. AID PROJECT			

DATE: 04/09/2010 10:51:02 USER: DCD FILE: J:\JDD\10177 IL-DTVM#8 USS1 Bridge Repairs\2-TaylorRoad\0580104-74150-005-superstr3.dgn