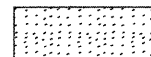
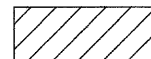


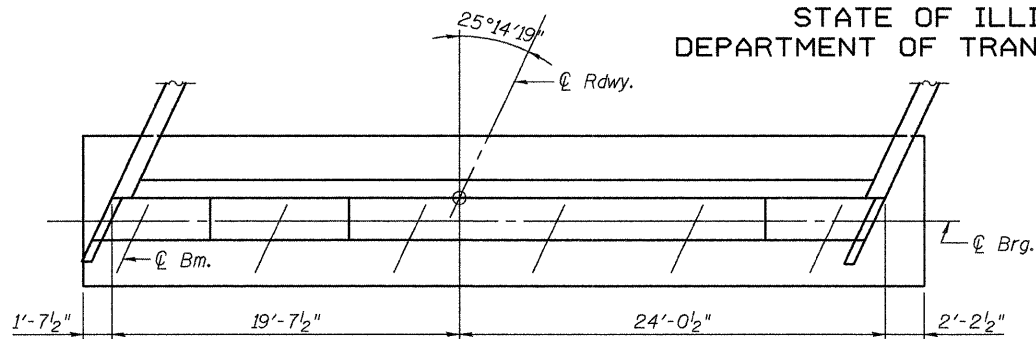


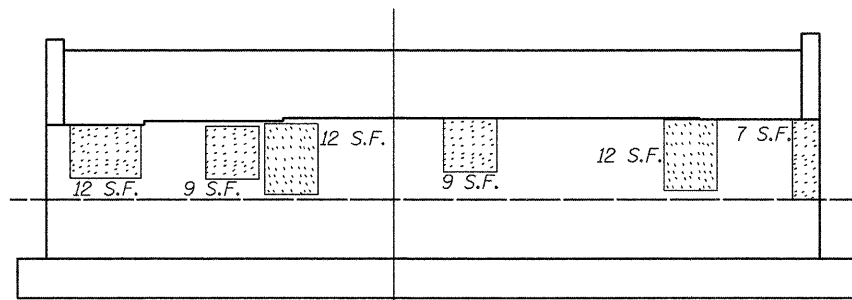
STATE OF ILLINOIS  
DEPARTMENT OF TRANSPORTATION

LEGEND

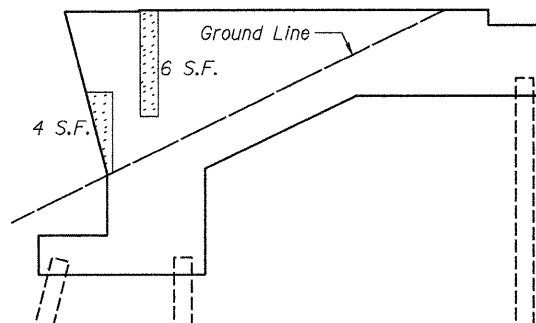
-  Hollow or Unsound Concrete
-  Spalled Concrete
-  Spalled Concrete with Exposed Reinf.
-  Hairline Crack



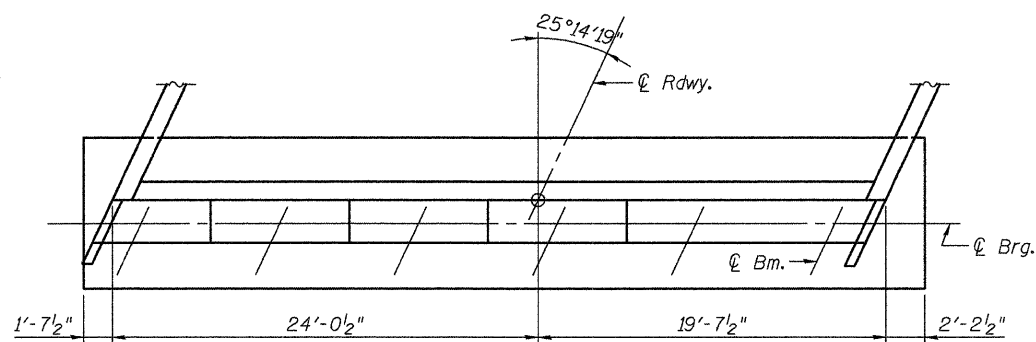
PLAN



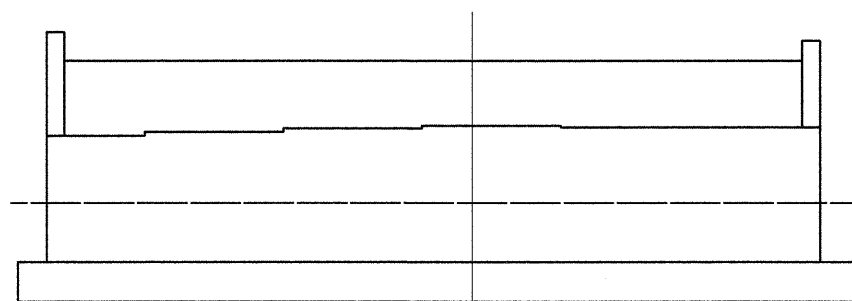
ELEVATION AT EAST ABUTMENT



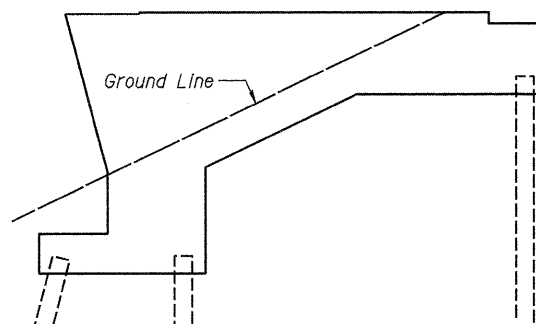
SOUTH WING ELEVATION



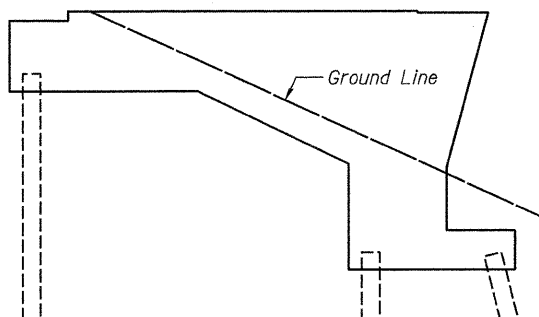
PLAN



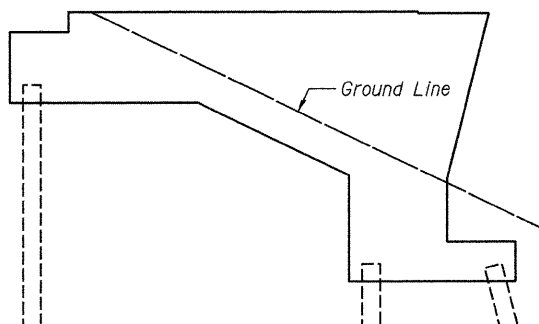
ELEVATION AT WEST ABUTMENT



NORTH WING ELEVATION



NORTH WING ELEVATION



SOUTH WING ELEVATION

BILL OF MATERIAL

Item	Unit	Total
Structural Repair of Concrete (Depth = < 5")	Sq. Ft.	-

Notes:  
Condition Survey performed 9/16/2009.

Plan quantities assume that areas of "exposed reinforcing" will be repaired.

Repair areas are estimated, the Engineer shall determine actual repair locations and record them on the As-Built plans.

ABUTMENTS (SB)  
STRUCTURE NO. 058-0104(NB) & 0105(SB)

SHEET 9 OF 11	F.A.P. RTE.	SECTION	COUNTY	TOTAL SHEETS	SHEET NO.
	322	(58-20)RS	MACON	151	100
STA. 142+55.53		CONTRACT NO. 74150			
FED. ROAD DIST. NO.		ILLINOIS FED. AID PROJECT			

**JD** Johnson, Depp & Quisenberry  
CONSULTING ENGINEERS  
Springfield, Illinois

DESIGNED: JDQ	DRAWN: SJS
CHECKED: DCD	CHECKED: DCD

DATE: 04/09/2010 10:51:43 USER: DCD FILE: J:\JDQ\10177 IL-DTVM\*8 US51Bridge Repairs\2-Taylor-Road\0580104-74150-009-abutts-SB.dgn