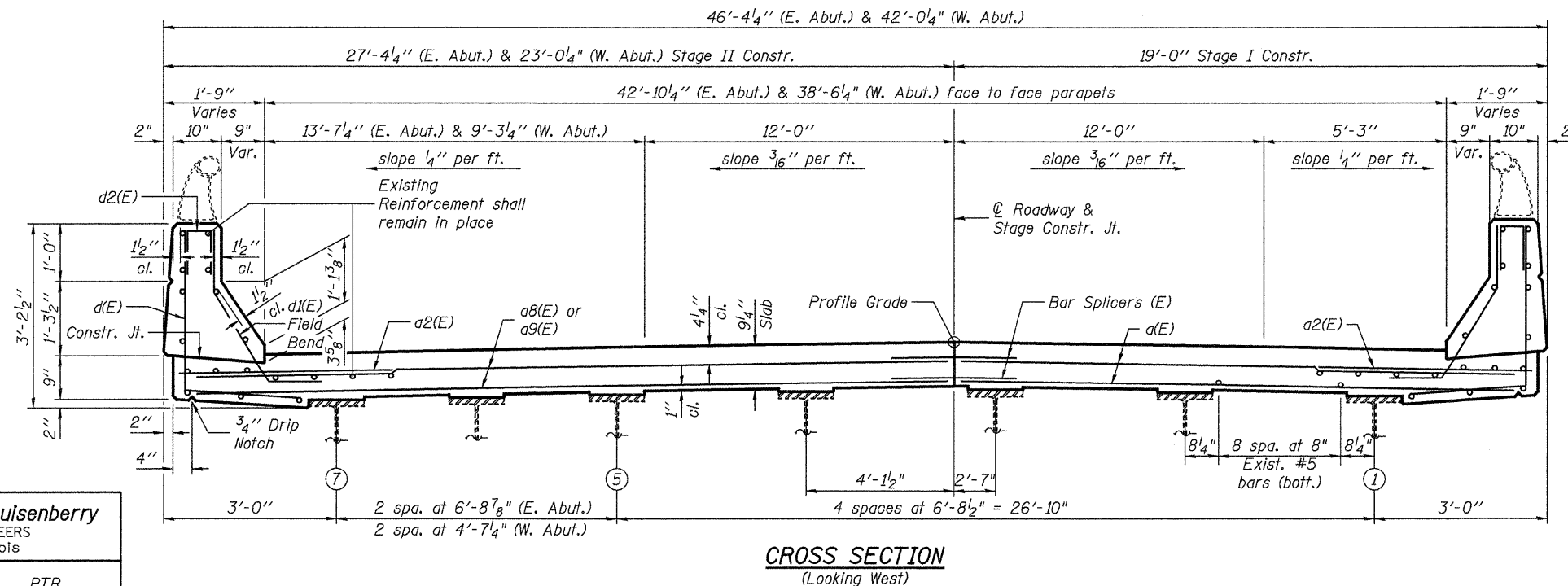
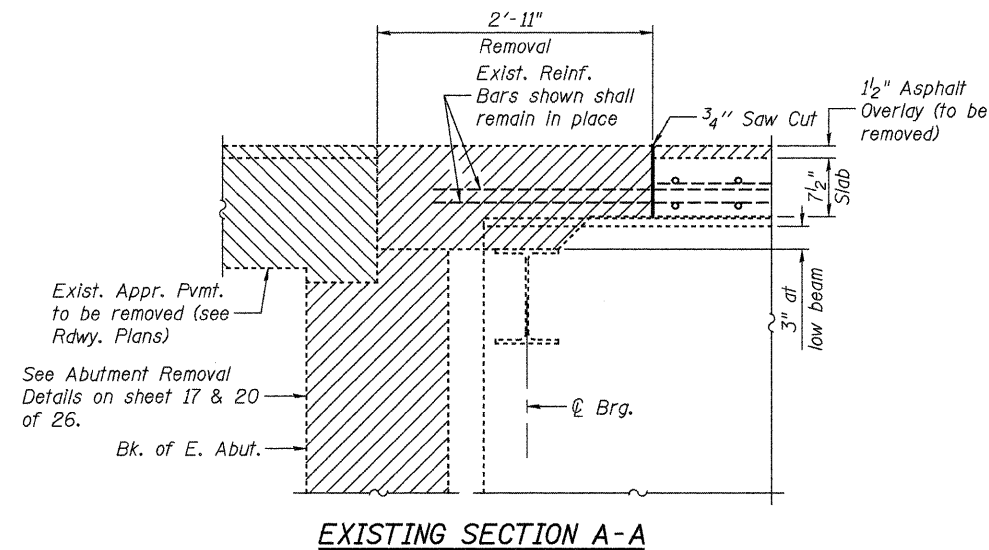
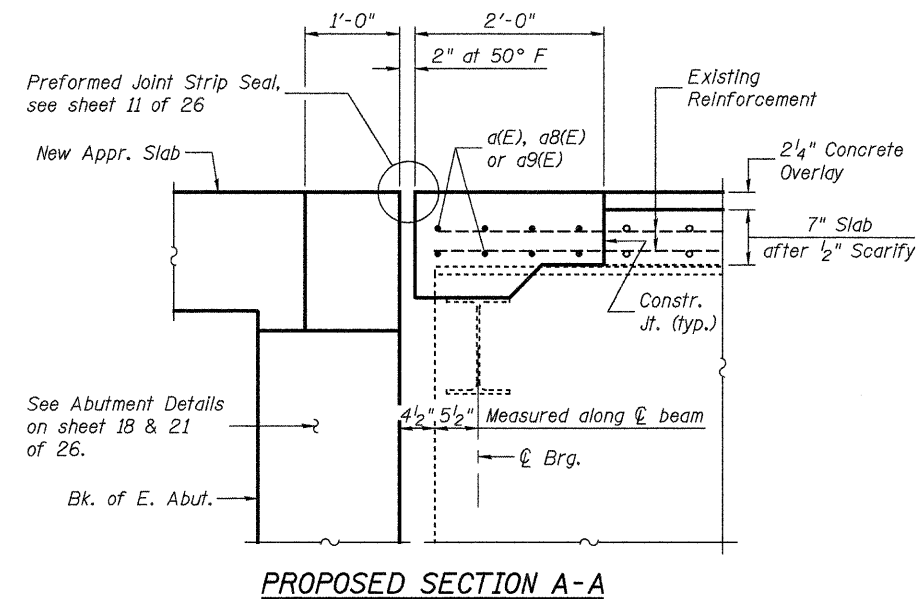
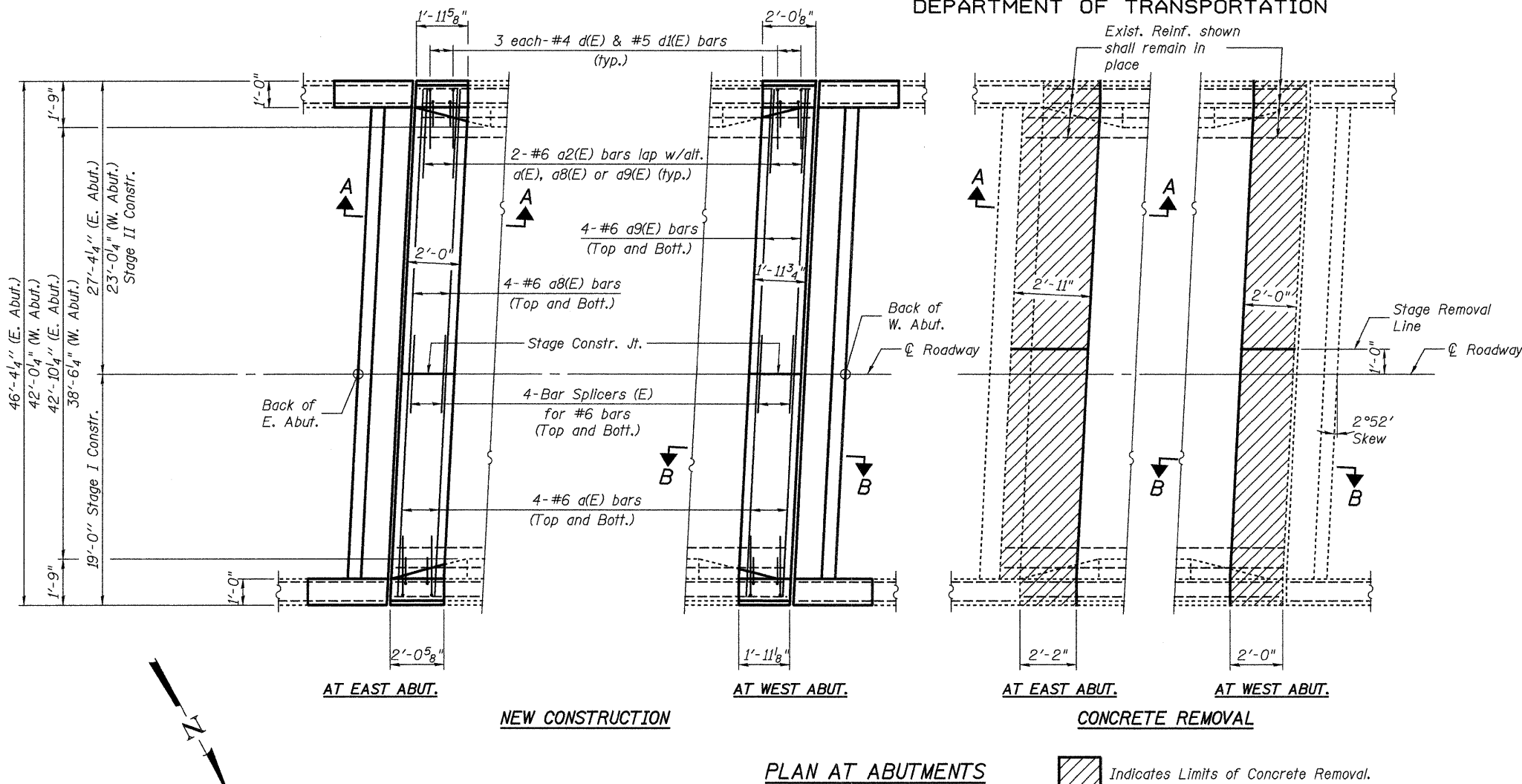


STATE OF ILLINOIS
DEPARTMENT OF TRANSPORTATION



Notes:
For Section B-B see sheet 8 of 26.
For Parapet Details and Bill of Material see sheet 10 of 26.
The existing expansion joint areas were previously reconstructed. The concrete removal for this project shall extend at least to the limits of the previous reconstruction.

Johnson, Depp & Quisenberry CONSULTING ENGINEERS Springfield, Illinois	
DESIGNED: JDQ	DRAWN: PTR
CHECKED: DCD	CHECKED: DCD

SUPERSTRUCTURE (SB)
STRUCTURE NO. 058-0108(SB) & 0109(NB)

SHEET 5 OF 26	F.A.P. RTE.	SECTION	COUNTY	TOTAL SHEETS	SHEET NO.
	322	(58-20)RS	MACON	151	107
	STA. 235+00.78		CONTRACT NO. 74150		
FED. ROAD DIST. NO.		ILLINOIS FED. AID PROJECT			

FILE: J:\JDO\101077 IL-DTVM#8 USS51Bridge Repair\3-IL48-NSRR\0580108-74150-005-superstr2-SB.dgn
USER: DCD
DATE: 04/09/2010 18:02:34