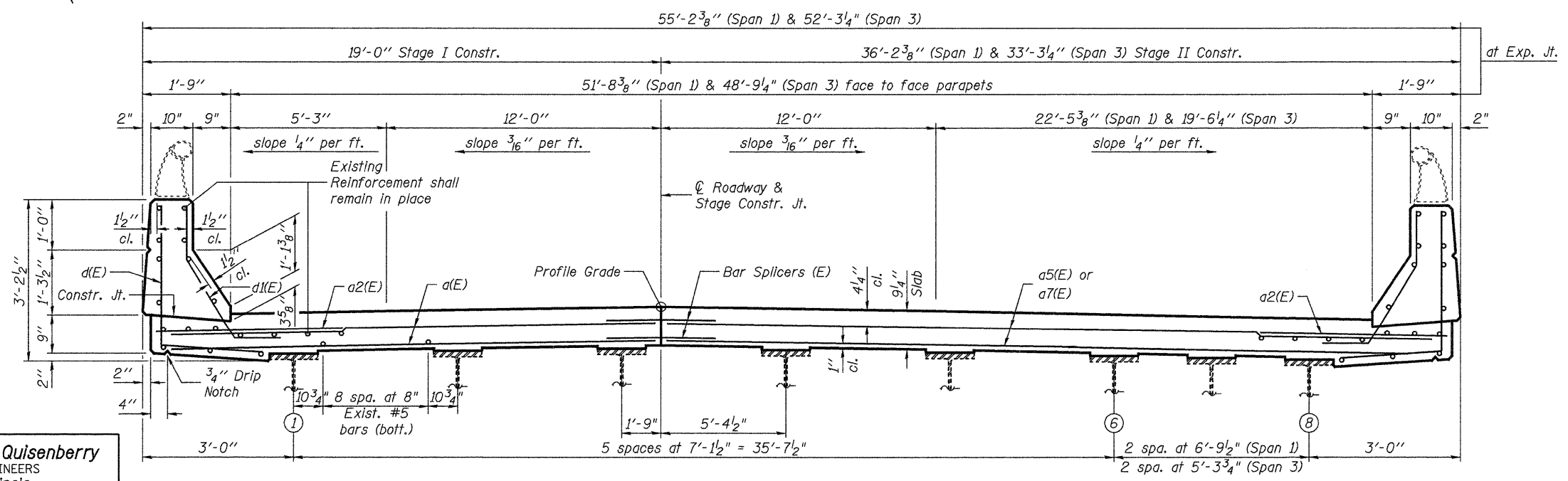
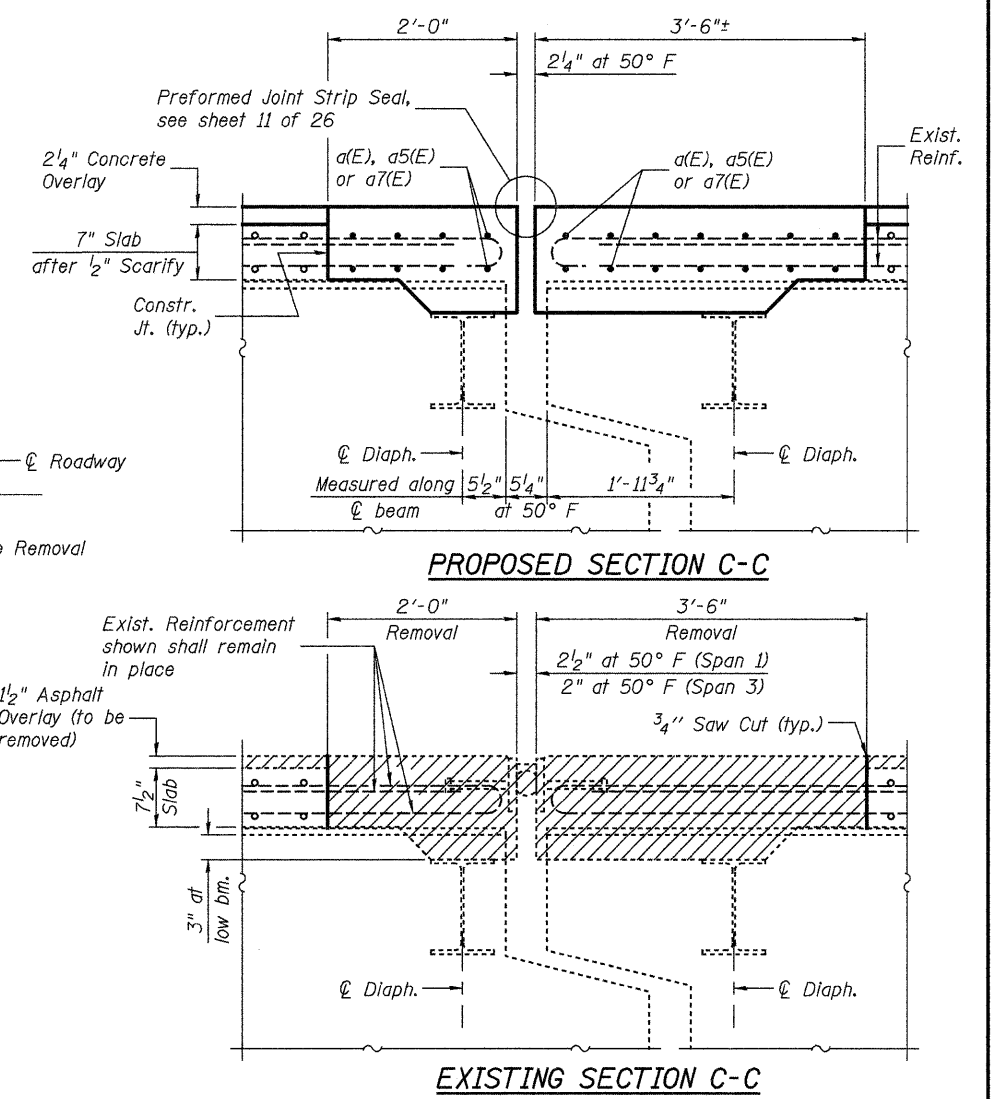
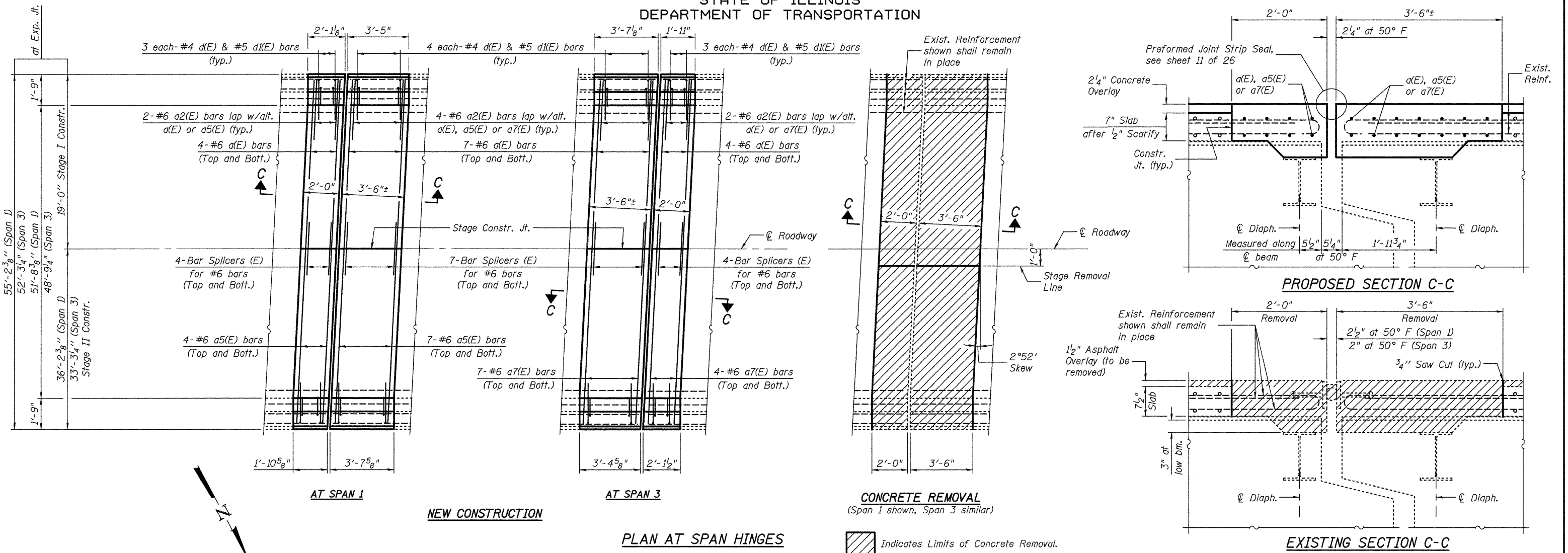


STATE OF ILLINOIS  
DEPARTMENT OF TRANSPORTATION



**CROSS SECTION**  
(Looking West)

Notes:  
 For Parapet Details and Bill of Material see sheet 10 of 26.  
 The existing expansion joint areas were previously reconstructed. The concrete removal for this project shall extend at least to the limits of the previous reconstruction.

**Johnson, Depp & Quisenberry**  
 CONSULTING ENGINEERS  
 Springfield, Illinois

DESIGNED: JDQ	DRAWN: PTR
CHECKED: DCD	CHECKED: DCD

**SUPERSTRUCTURE (NB)**  
**STRUCTURE NO. 058-0108(SB) & 0109(NB)**

SHEET 9 OF 26	F.A.P. RTE. 322	SECTION (58-20)RS	COUNTY MACON	TOTAL SHEETS 151	SHEET NO. 111
	STA. 235+00.78		CONTRACT NO. 74150		
FED. ROAD DIST. NO.		ILLINOIS FED. AID PROJECT			

FILE: J:\JDD\JDD177 IL-DTVM#8 USS1 Bridge Repair.s3-L48-NSHR\0580108-74150-009-superstr3-NB.dgn  
 USER: DCD  
 DATE: 04/09/2010 10:02:47