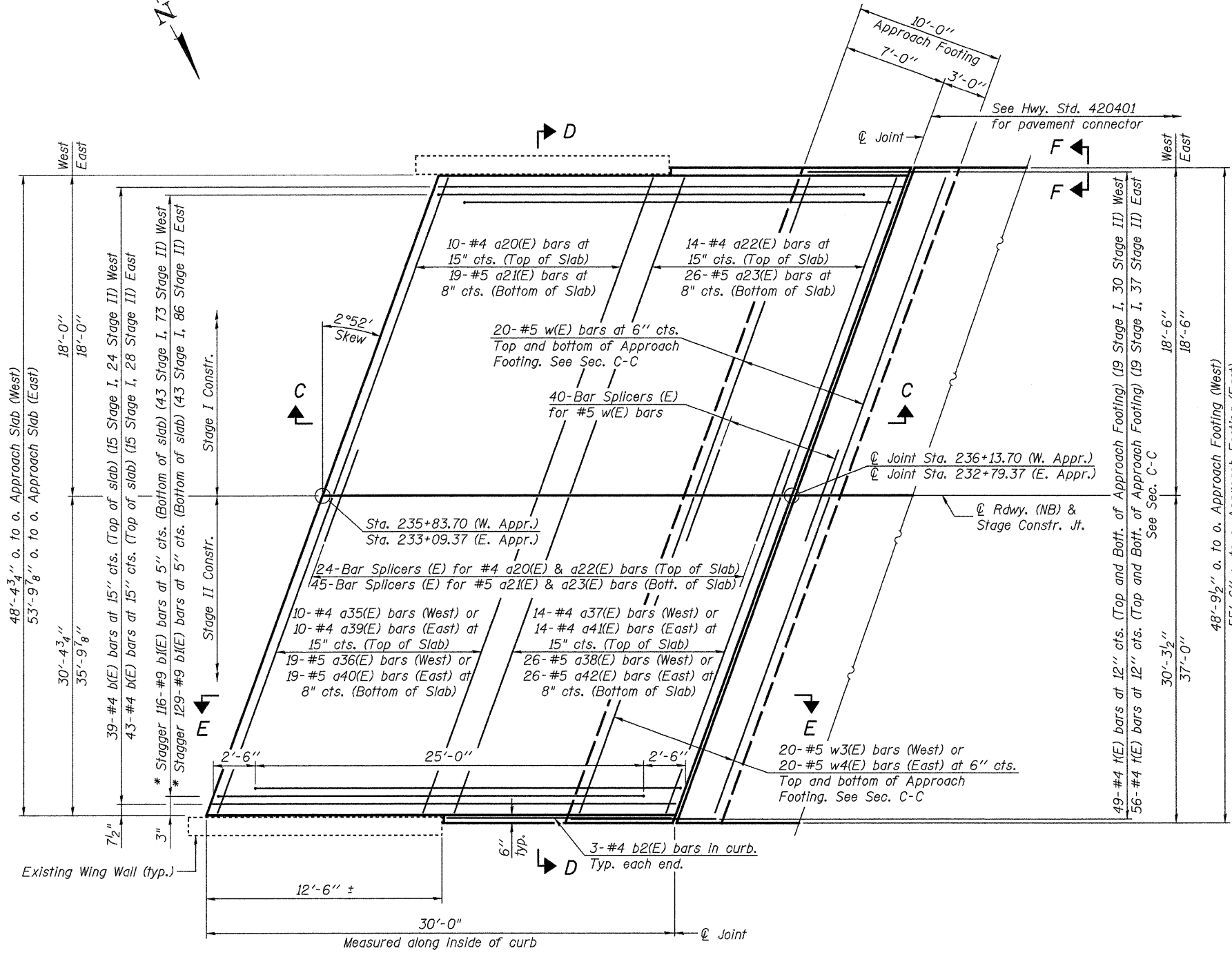


STATE OF ILLINOIS
DEPARTMENT OF TRANSPORTATION

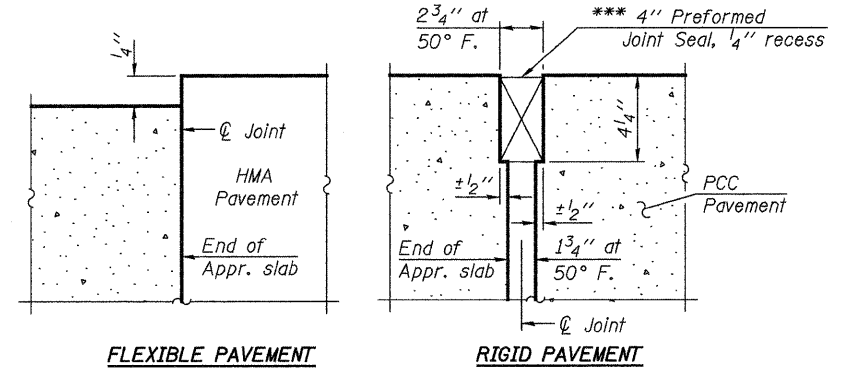
Notes:
See sheet 15 of 26 for Sections C-C & D-D and View E-E.
a20(E) thru a23(E) & a35(E) thru a42(E) bar spacings measured along \varnothing Rdwy.



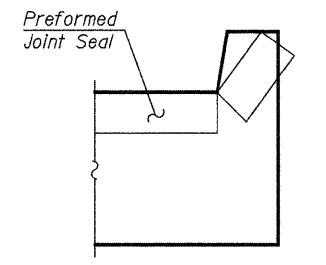
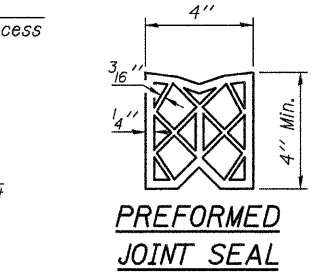
PLAN
(West Approach shown, East Approach similar)

* Tilt #9 b1(E) bars as required to maintain clearance.

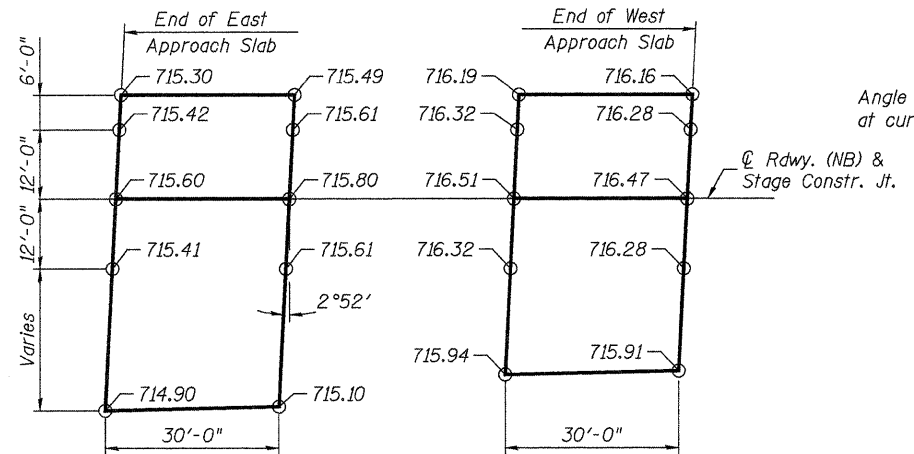
*** Cost included with Concrete Superstructure.



DETAIL A



VIEW F-F
Angle Preformed Joint Seal at 45° at curbs when req'd for drainage.



TOP OF APPROACH SLAB ELEVATIONS

NOTE:
Proposed elevations are based on the original 1975 plan elevations, increased by 0.02' (1/4") to account for the proposed deck overlay. The top of the existing pavement at the abutment backwall can be used as a temporary benchmark by assuming the following elevations:
Back of East Abut. original PG Elev. 715.77
Back of West Abut. original PG Elev. 716.49

FILE: J:\JDD\110177 IL-DTVM#8 US51Bridge Repairs\3-L48-NSRR\0580108-74150-04-approach-slab-NB.dgn USER: DCD DATE: 04/09/2010 18:03:02

JD Johnson, Depp & Quisenberry
CONSULTING ENGINEERS
Springfield, Illinois

DESIGNED: JDQ	DRAWN: P. Ray
CHECKED: DCD	CHECKED: DCD

BA-L 11-1-09 (Modified)

(Sheet 1 of 2)
BRIDGE APPROACH SLAB DETAILS (NB)
STRUCTURE NO. 058-0108(SB) & 0109(NB)

SHEET 14 OF 26	F.A.P. RTE.	SECTION	COUNTY	TOTAL SHEETS	SHEET NO.
	322	(58-20)RS	MACON	151	116
		STA. 235+00.78	CONTRACT NO. 74150		
		FED. ROAD DIST. NO.	ILLINOIS FED. AID PROJECT		