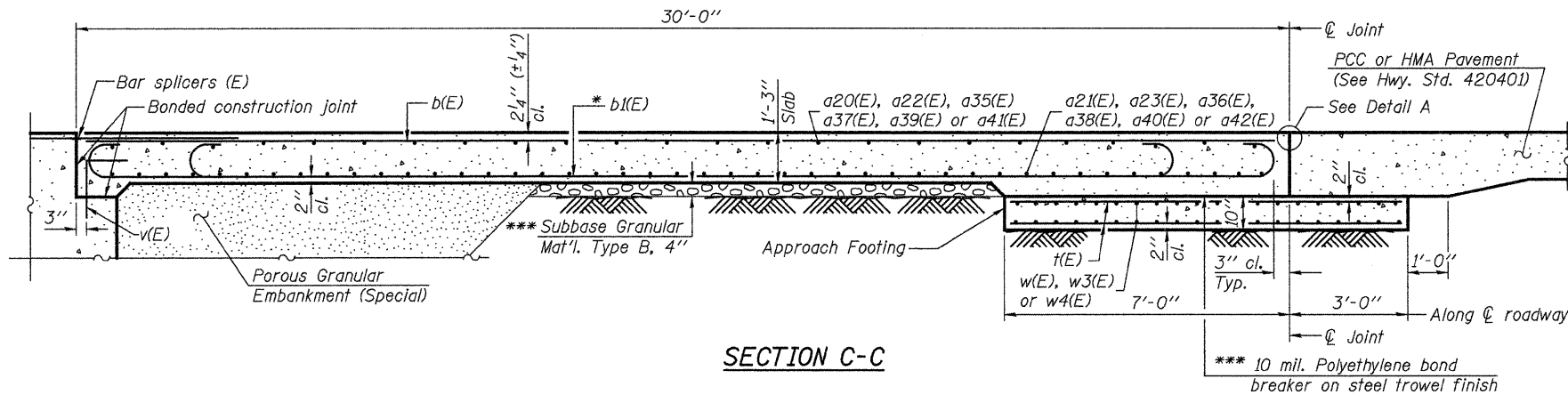
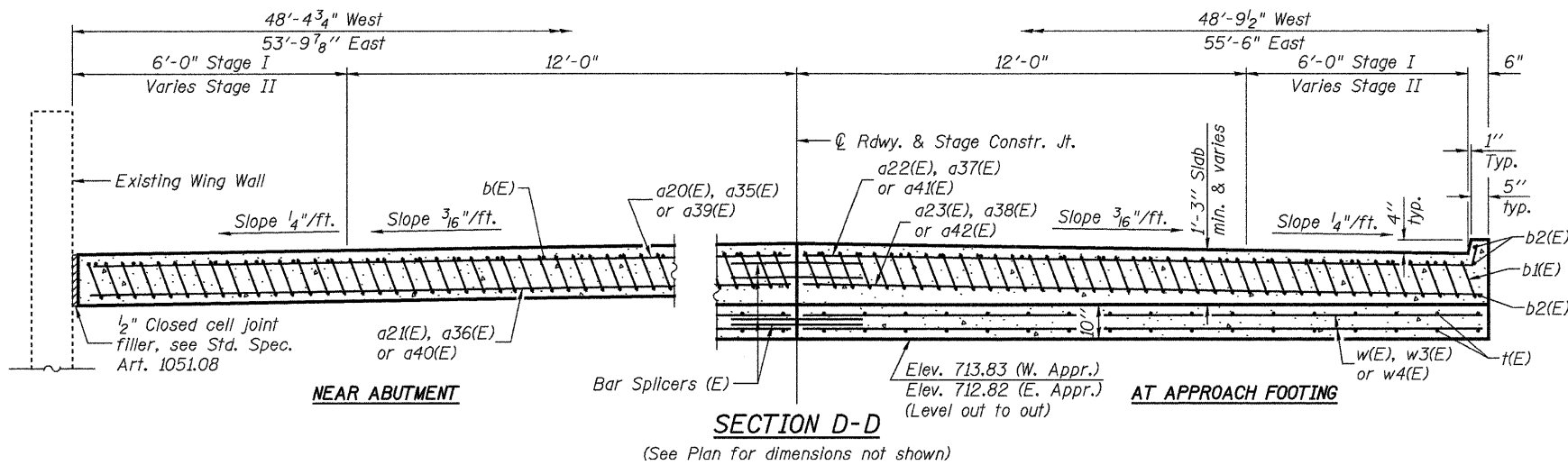


STATE OF ILLINOIS
DEPARTMENT OF TRANSPORTATION

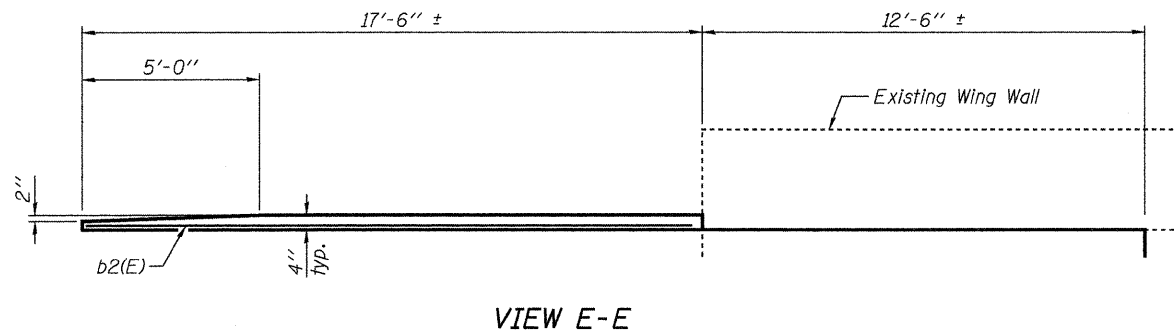


Notes:

See sheet 14 of 26 for Detail A and View F-F.
Approach slab and parapet concrete shall be paid for as Concrete Superstructure.
Approach footing concrete shall be paid for as Concrete Structures.
Reinforcement shall be paid for as Reinforcement Bars, Epoxy Coated.
For v(E) bar details, see sheet 21 & 22 of 26.
The approach footing maximum applied service bearing pressure (Qmax) = 2.0 ksf.
For bar splicer details, see sheet 25 of 26.
Cost of excavation for approach footing included with Concrete Structures.
For Porous Granular Embankment (Special) and drainage treatment details, see sheet 2 of 26.

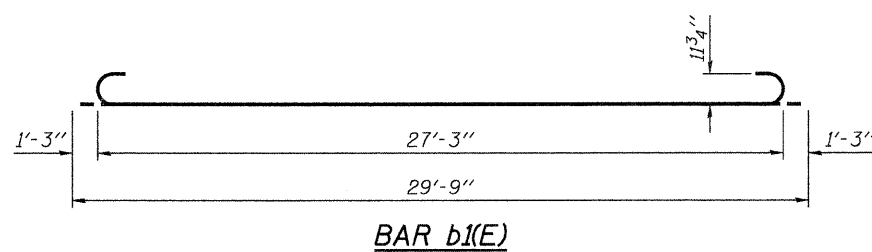
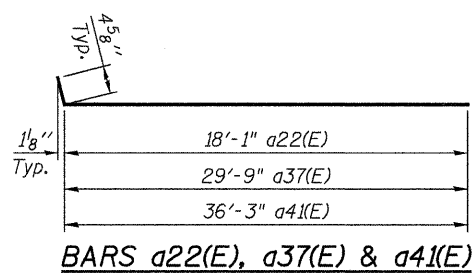


* Tilt #9 b1(E) bars as required to maintain clearance.
*** Cost included with Concrete Superstructure.



TWO APPROACHES
BILL OF MATERIAL

Bar	No.	Size	Length	Shape	
a20(E)	20	#4	17'-8"	—	
a21(E)	38	#5	17'-8"	—	
a22(E)	28	#4	18'-6"	—	
a23(E)	52	#5	18'-2"	—	
a35(E)	10	#4	29'-10"	—	
a36(E)	19	#5	29'-10"	—	
a37(E)	14	#4	30'-2"	—	
a38(E)	26	#5	29'-10"	—	
a39(E)	10	#4	35'-6"	—	
a40(E)	19	#5	35'-6"	—	
a41(E)	14	#4	36'-8"	—	
a42(E)	26	#5	36'-4"	—	
b(E)	82	#4	29'-8"	—	
b1(E)	245	#9	29'-9"	—	
b2(E)	12	#4	17'-2"	—	
t(E)	210	#4	9'-8"	—	
w(E)	80	#5	18'-2"	—	
w3(E)	40	#5	30'-0"	—	
w4(E)	40	#5	36'-7"	—	
Concrete Superstructure				Cu. Yd.	151.4
Concrete Structures				Cu. Yd.	32.2
Reinforcement Bars, Epoxy Coated				Pound	38610



JD Johnson, Depp & Guisenberry
CONSULTING ENGINEERS
Springfield, Illinois

DESIGNED: JDQ DRAWN: P. Ray
CHECKED: DCD CHECKED: DCD

BA-R 11-1-09 (Modified)

(Sheet 2 of 2)
BRIDGE APPROACH SLAB DETAILS (NB)
STRUCTURE NO. 058-0108(SB) & 0109(NB)

SHEET 15 OF 26	F.A.P. RTE.	SECTION	COUNTY	TOTAL SHEETS	SHEET NO.
	322	(58-20)RS	MACON	151	117
		STA. 235+00.78	CONTRACT NO.	74150	
		FED. ROAD DIST. NO.	ILLINOIS FED. AID PROJECT		

FILE: J:\JDD\10177 IL-DTVM#8 USS1 Bridge Repairs\3-IL48-NSRR\0580108-7450-015-app\slab2-NB.dgn
USER: DCD
DATE: 04/09/2010 18:03:05