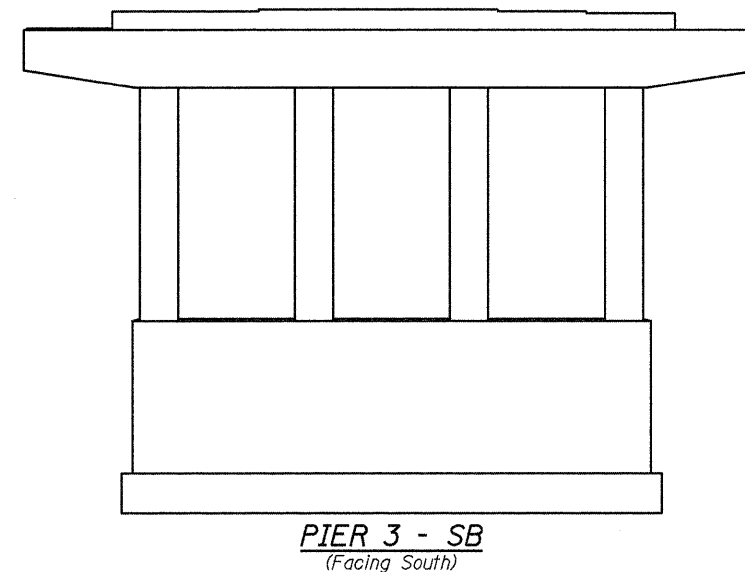
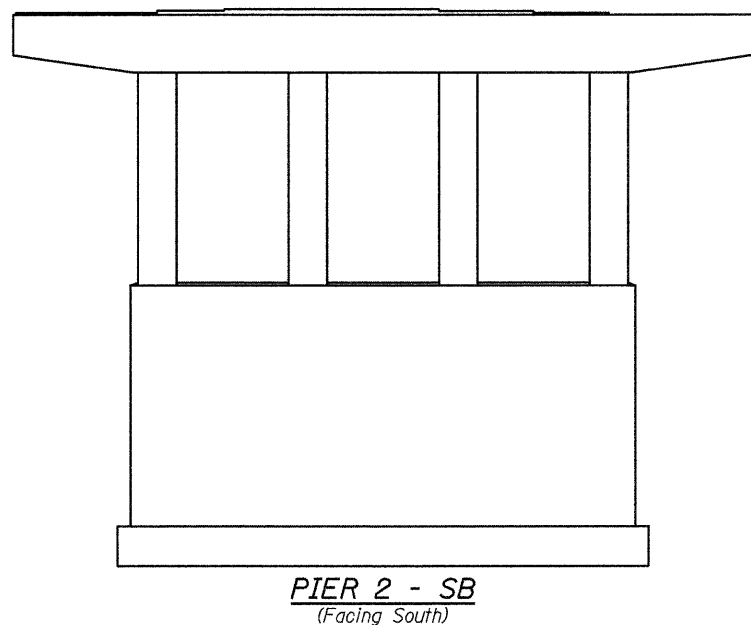
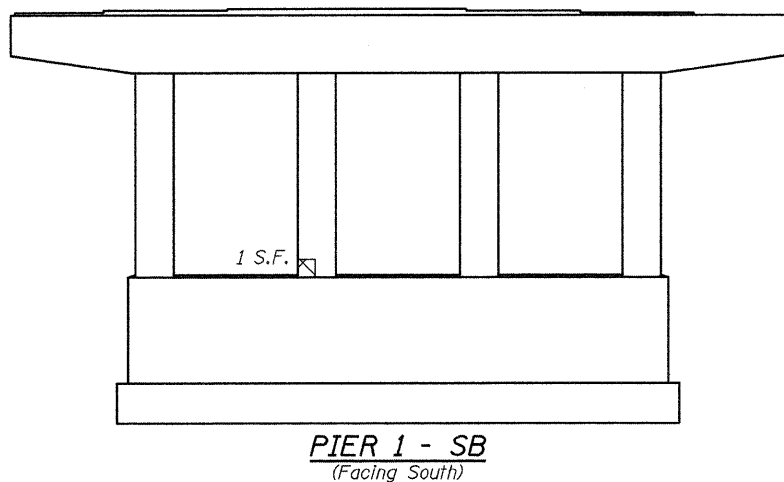
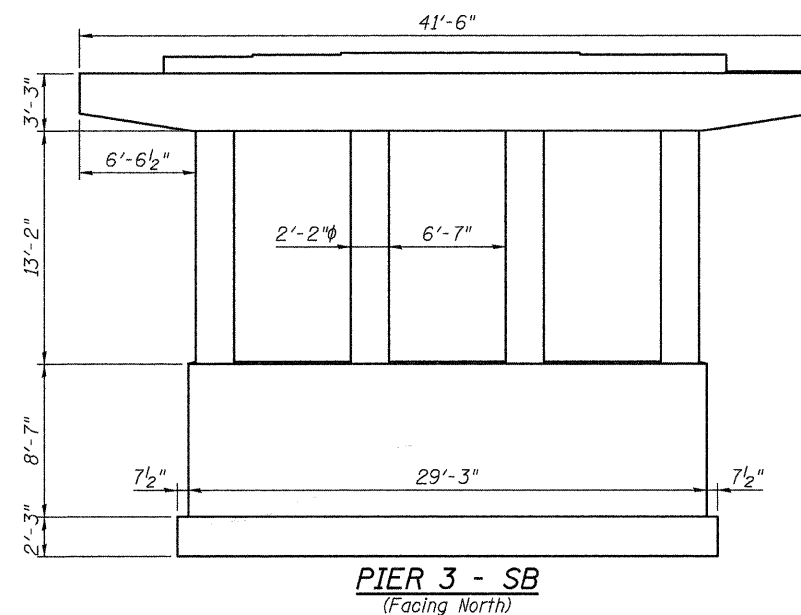
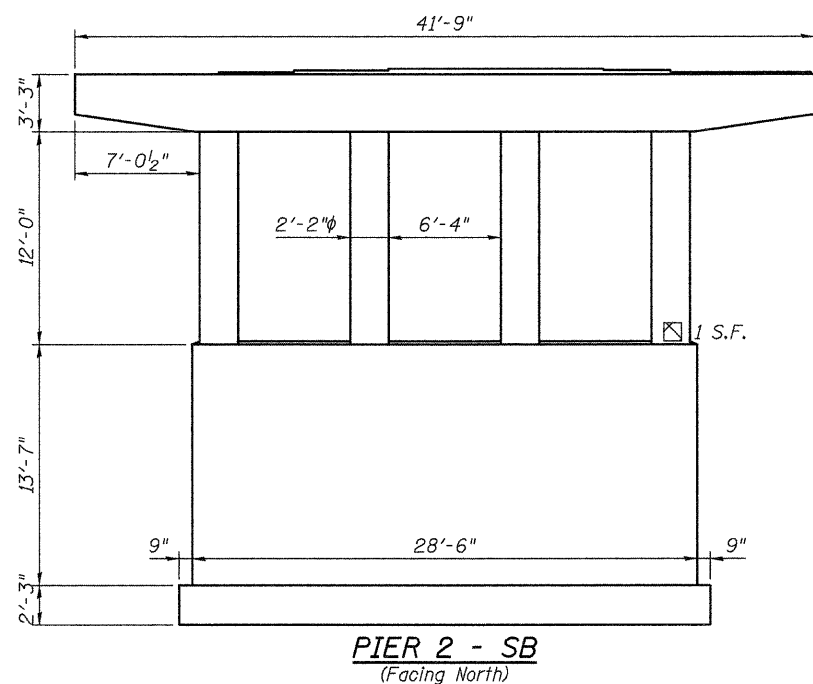
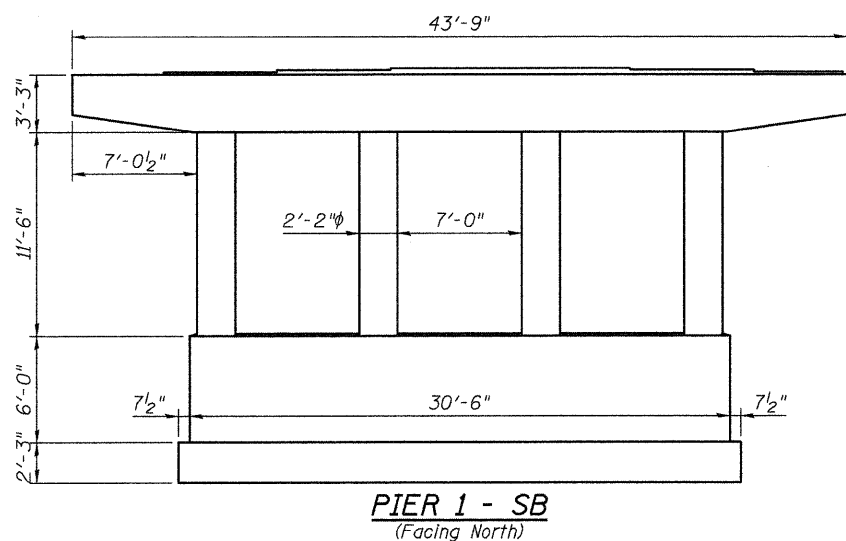
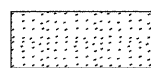





STATE OF ILLINOIS  
DEPARTMENT OF TRANSPORTATION



**LEGEND**

-  Hollow or Unsound Concrete
-  Spalled Concrete
-  Spalled Concrete with Exposed Reinf.
-  Hairline Crack

**JD Johnson, Depp & Quisenberry**  
CONSULTING ENGINEERS  
Springfield, Illinois

DESIGNED: JDQ	DRAWN: SJS
CHECKED: DCD	CHECKED: DCD

**Notes:**  
Pier Condition Survey performed 9/17/2009.

Plan quantities assume that areas of "exposed reinforcing" will be repaired.

Repair areas are estimated, the Engineer shall determine actual repair locations and record them on the As-Built plans.

**BILL OF MATERIAL**

Item	Unit	Total
Structural Repair of Concrete (Depth = < 5")	Sq. Ft.	1

**PIERS (SB)  
STRUCTURE NO. 058-0108(SB) & 0109(NB)**

SHEET 23 OF 26	F.A.P. RTE. 322	SECTION 158-20/RS	COUNTY MACON	TOTAL SHEETS 151	SHEET NO. 125
	STA. 235+00.78		CONTRACT NO. 74150		
FED. ROAD DIST. NO.		ILLINOIS FED. AID PROJECT			

FILE: J:\JDQ\10177 IL-DTVM#8 USSIBridge Repairs\3-IL48-NSRR\0580108-74150-023-piers-SB.dgn

USER: DCD

DATE: 04/09/2010 10:03:31