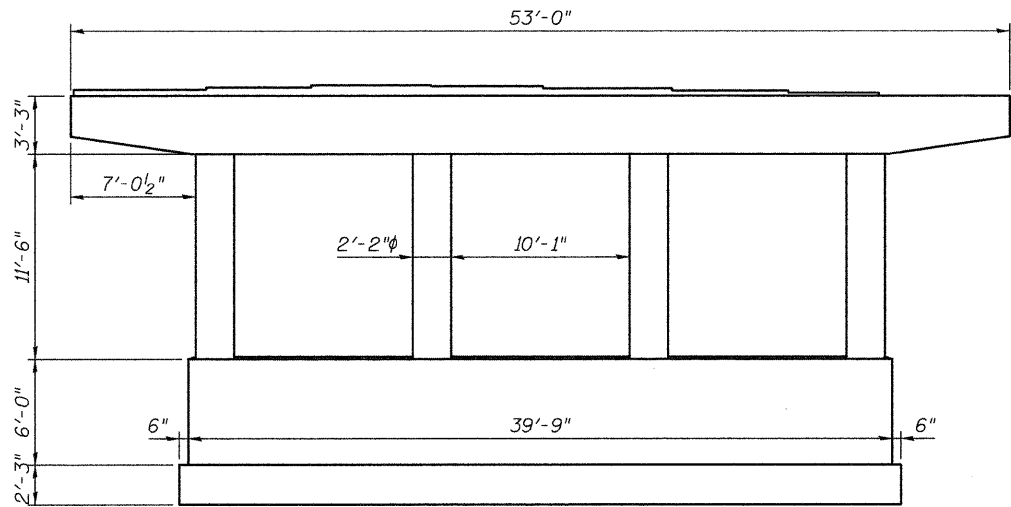
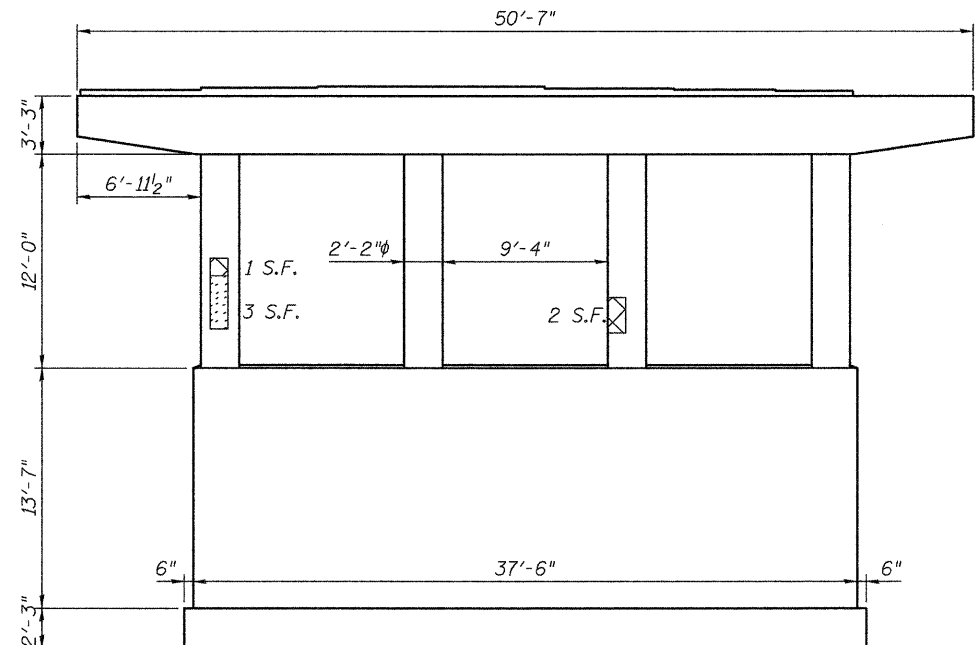


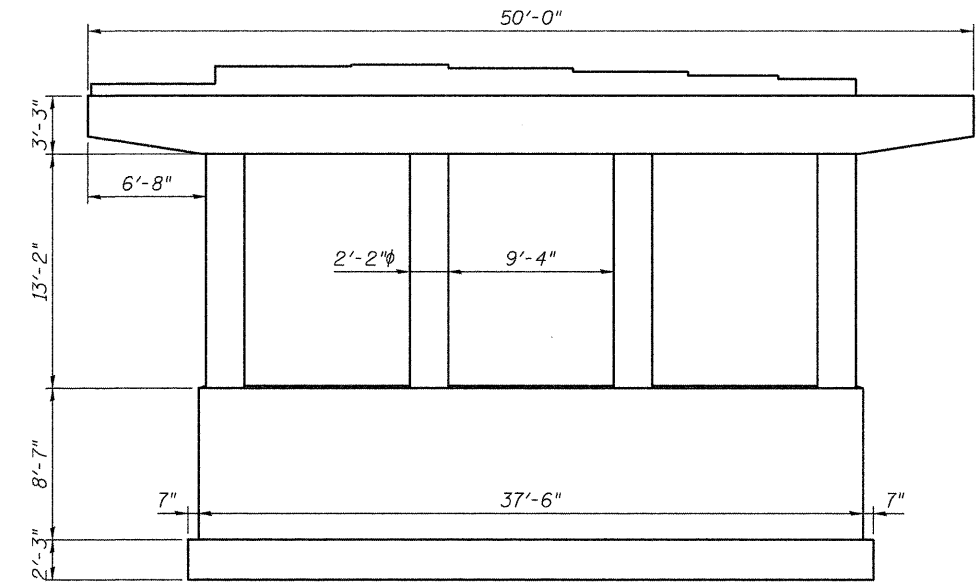
STATE OF ILLINOIS  
DEPARTMENT OF TRANSPORTATION



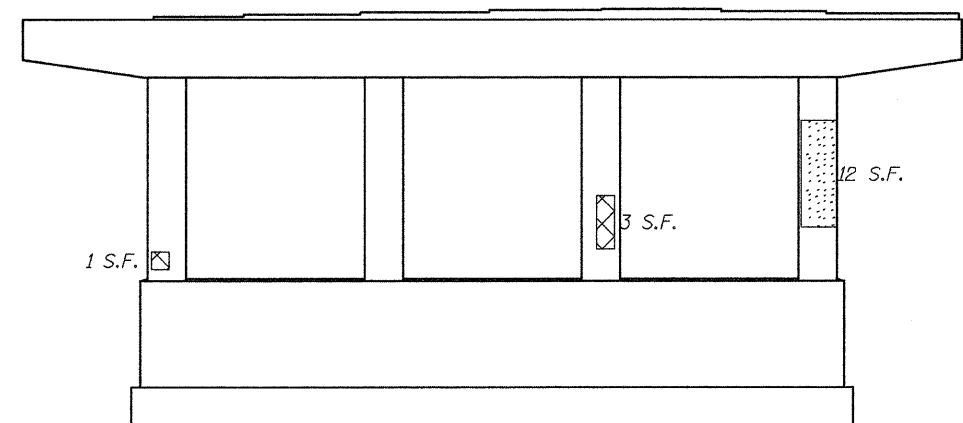
**PIER 1 - NB**  
(Facing North)



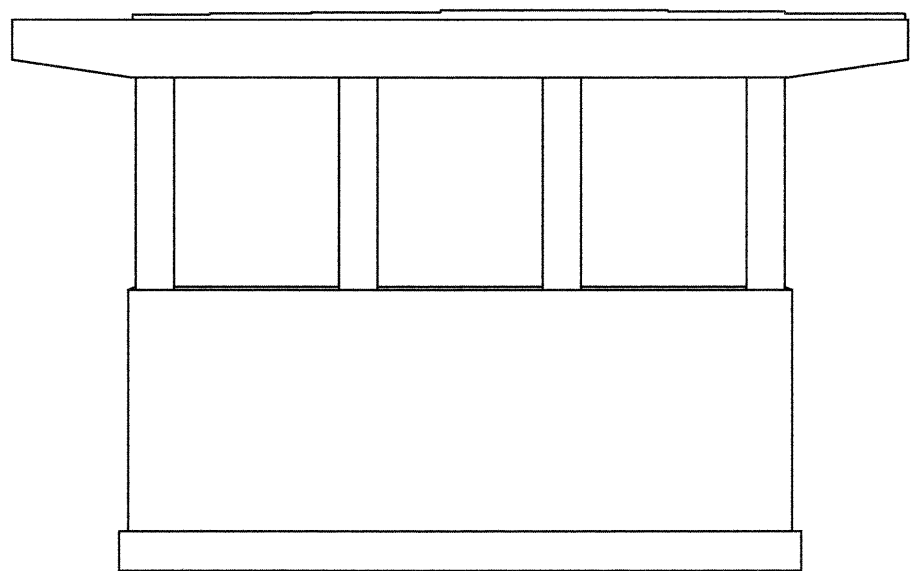
**PIER 2 - NB**  
(Facing North)



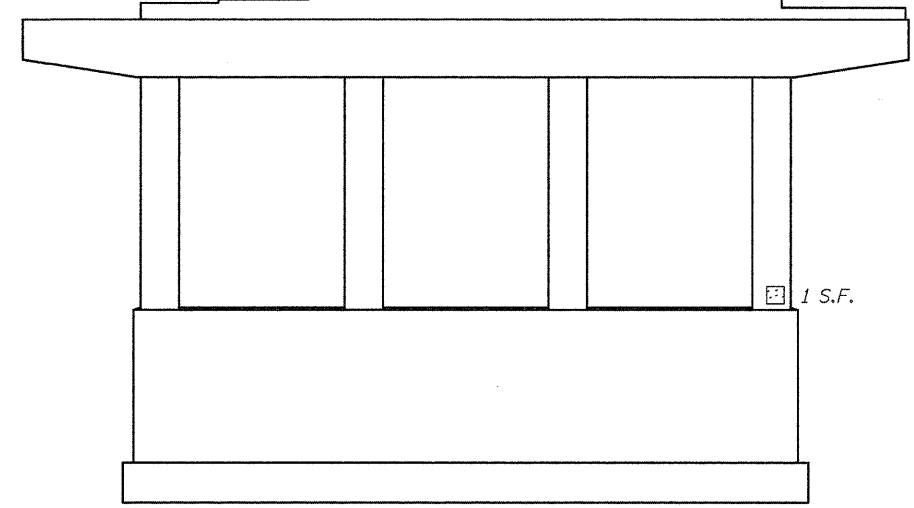
**PIER 3 - NB**  
(Facing North)



**PIER 1 - NB**  
(Facing South)


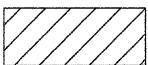

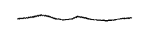


**PIER 2 - NB**  
(Facing South)



**PIER 3 - NB**  
(Facing South)

**LEGEND**

-  Hollow or Unsound Concrete
-  Spalled Concrete
-  Spalled Concrete with Exposed Reinf.
-  Hairline Crack

**Notes:**  
Pier Condition Survey performed 9/17/2009.  
Plan quantities assume that areas of "exposed reinforcing" will be repaired.  
Repair areas are estimated, the Engineer shall determine actual repair locations and record them on the As-Built plans.

**BILL OF MATERIAL**

Item	Unit	Total
Structural Repair of Concrete (Depth = < 5")	Sq. Ft.	10

**Johnson, Depp & Quisenberry**  
CONSULTING ENGINEERS  
Springfield, Illinois

DESIGNED: JDQ	DRAWN: SJS
CHECKED: DCD	CHECKED: DCD

**PIERS (NB)**  
**STRUCTURE NO. 058-0108(SB) & 0109(NB)**

SHEET 24 OF 26	F.A.P. RTE.	SECTION	COUNTY	TOTAL SHEETS	SHEET NO.
	322	158-201RS	MACON	151	126
STA. 235+00.78			CONTRACT NO. 74150		
FED. ROAD DIST. NO.		ILLINOIS FED. AID PROJECT			

FILE: J:\DQ\10177 IL-DTVM\8 USSIBridge Repairs\3-IL48-NSRR\0580108-74150-024-Piers-NB.dgn  
 USER: DCD  
 DATE: 04/09/2010 10:03:33