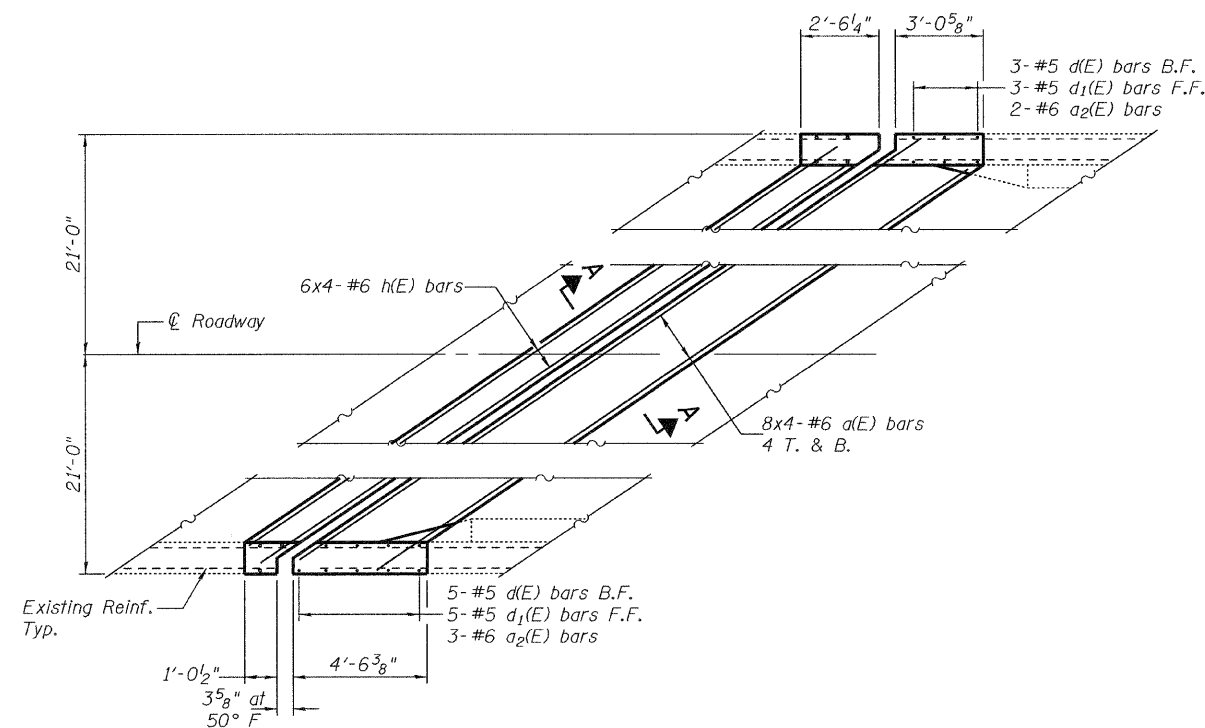
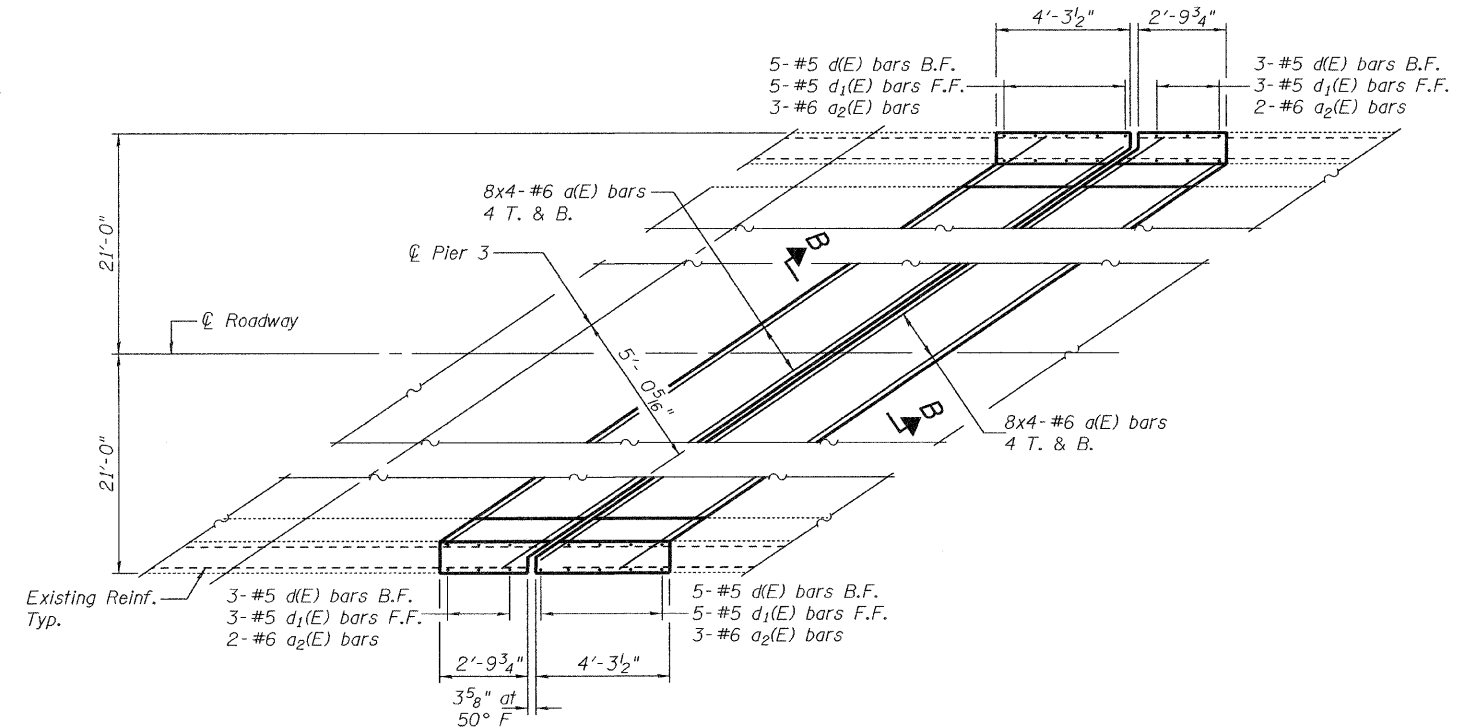


STATE OF ILLINOIS
DEPARTMENT OF TRANSPORTATION

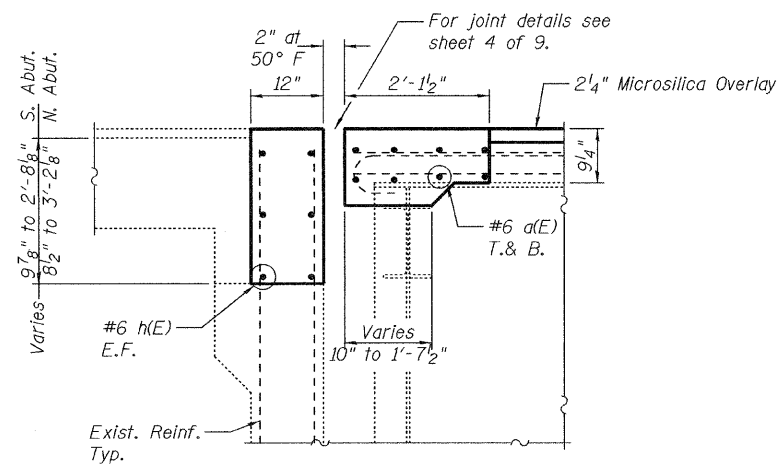


TYPICAL PLAN AT ABUTMENT

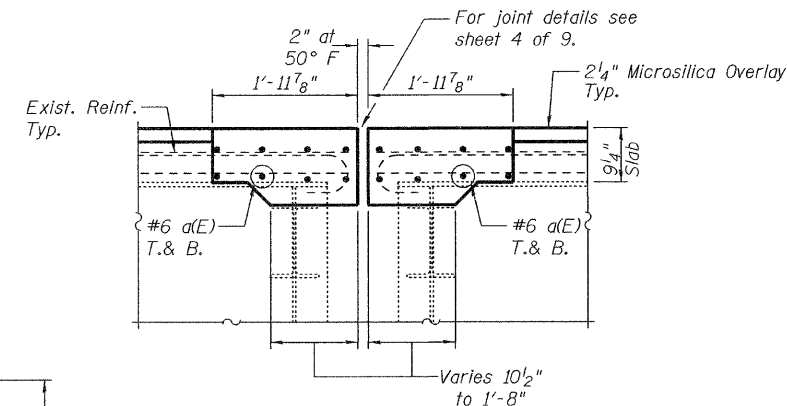
(South Abutment Shown, North Abutment Similar by Rotation)



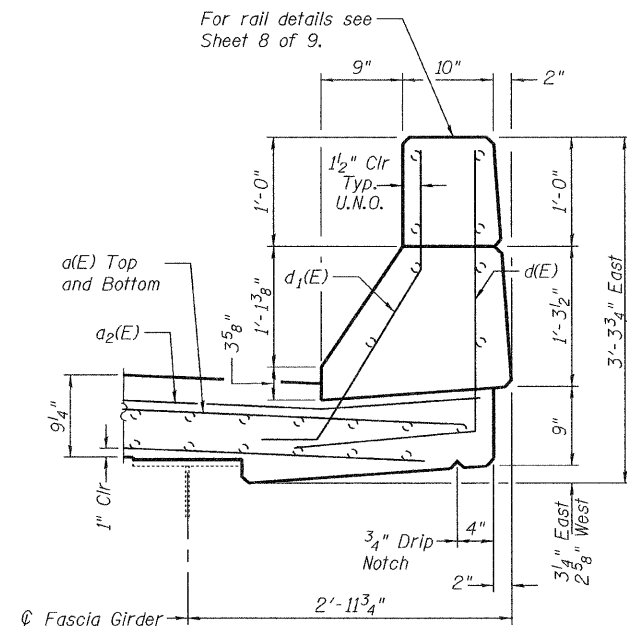
PLAN AT HINGE JOINT



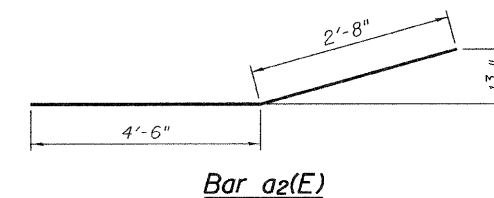
SECTION A-A



SECTION B-B



TYPICAL PARAPET SECTION



Bar a2(E)

Min. Bar Lap
#6 = 3'-10"

BILL OF MATERIAL

Bar	No.	Size	Length	Shape
a(E)	128	#6	20'-11"	—
a2(E)	20	#6	7'-2"	—
d(E)	32	#5	4'-3"	L
d1(E)	32	#5	3'-5"	L
h(E)	48	#6	20'-11"	—
Concrete Removal		Cu. Yd.	35.1	
Concrete Superstructure		Cu. Yd.	35.9	
Reinforcement Bars, Epoxy Coated		Lbs.	6,000	

Bars indicated thus 8 x 4-#6 etc. indicates 8 line of bars with 4 lengths per line.

JOINT DETAILS
SN 058-0103

DESIGNED	A.T.H.
CHECKED	I.J.L.
DRAWN	Drew Christopher
CHECKED	A.T.H. I.J.L.

EXAMINED	April 29, 2010
PASSED	 ENGINEER OF STRUCTURAL SERVICES ENGINEER OF BRIDGES AND STRUCTURES

SHEET NO. 3 9 SHEETS	F.A.P. RTE.	SECTION	COUNTY	TOTAL SHEETS	SHEET NO.
	322	(58-20)RS	Macon	151	131
FED. ROAD DIST. NO.		ILLINOIS FED. AID PROJECT		CONTRACT NO. 74150	