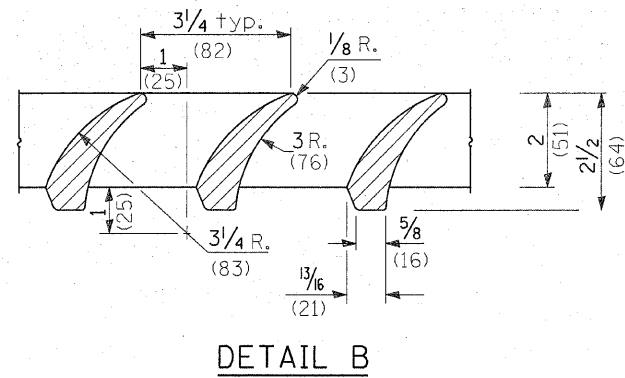


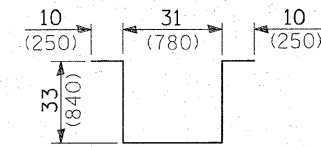
SECTION C-C

DETAIL OF CAST GRATE

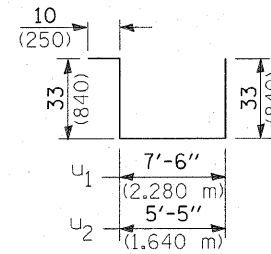
Type B requires 1 grate
 Type C requires 2 grates
 Type D requires 3 grates



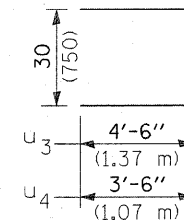
DETAIL B



BAR U



BARS U₁, U₂



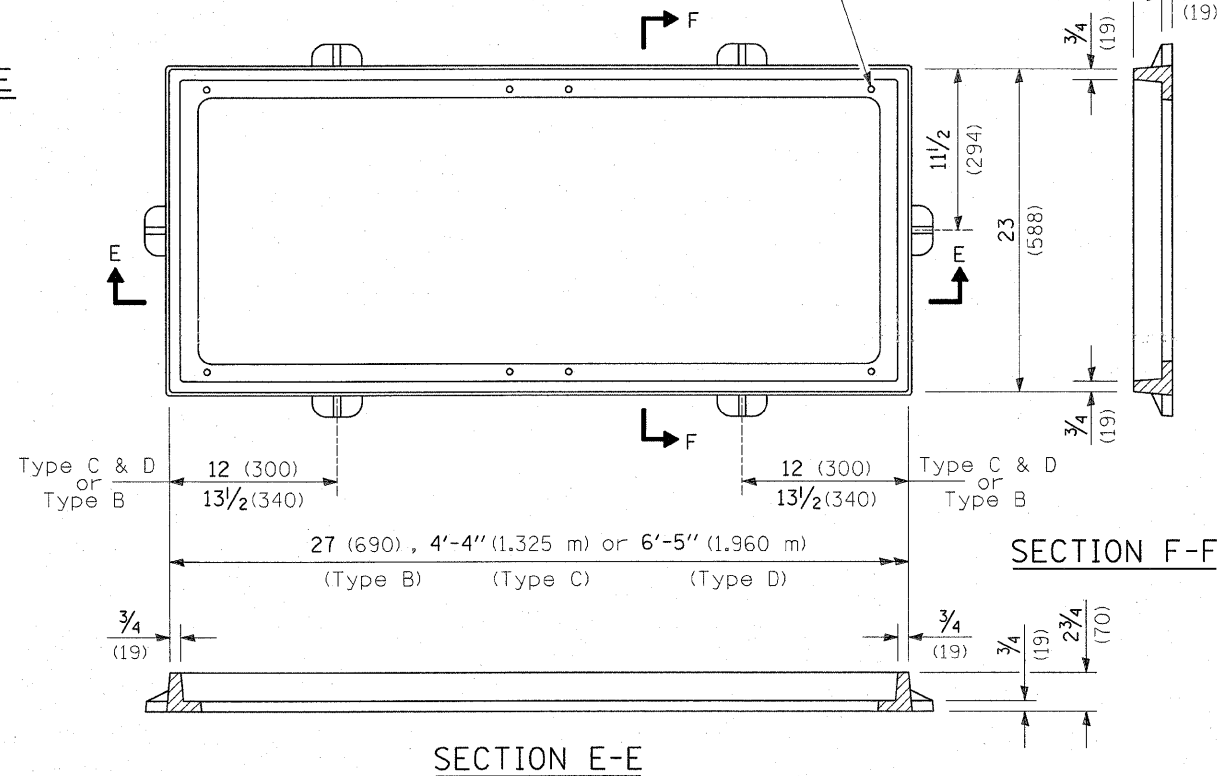
Bars U₃, U₄

INLET BOX

TYPE C

Bar	Qty.	Size	Length
u	6	No. 4 (No. 13)	9'-9" (2.96 m)
u ₂	3	No. 4 (No. 13)	11'-9" (3.57 m)
u ₄	6	No. 4 (No. 13)	9'-6" (2.89 m)
Concrete		cu. yds. (m ³)	1.3 (1.0)
Reinf. bars		lbs. (kg)	101 (45.8)
Grating		sq. ft. (m ²)	7.3 (0.68)

1/2 (13) Dia. tapped hole for bolting down grate, four places each frame.



SECTION E-E

SECTION F-F

DETAIL OF CAST FRAME
 (Type C shown)

DETAIL
 INLETS, SPECIAL,
 TYPE C