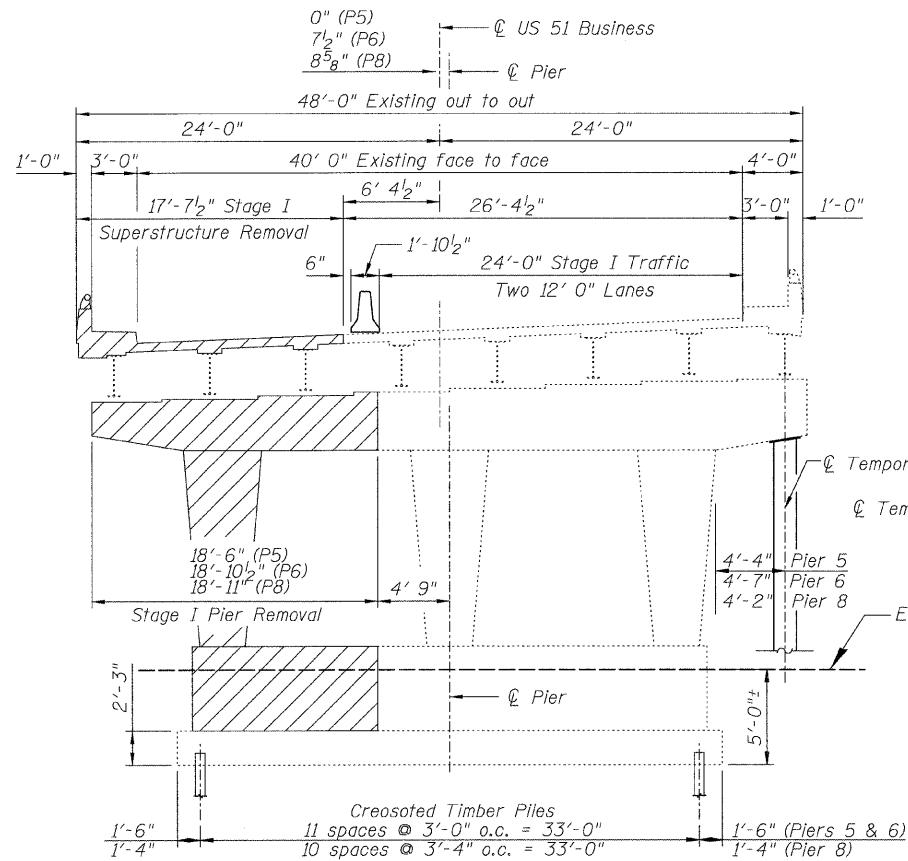


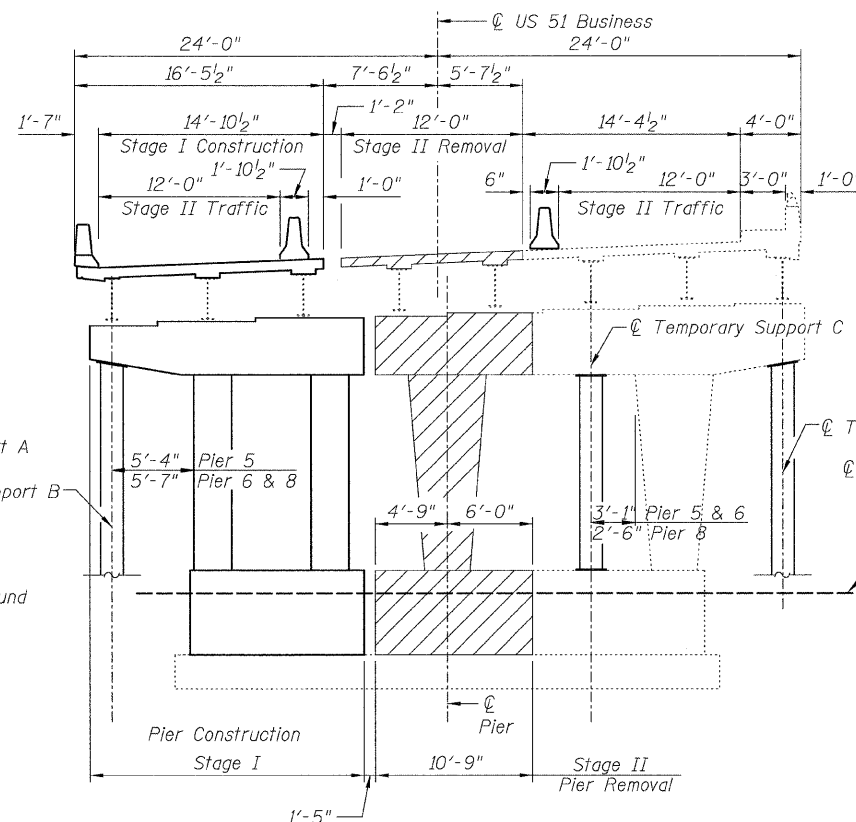
STATE OF ILLINOIS  
DEPARTMENT OF TRANSPORTATION

Note:  
Superstructure dimensions are at right angles.  
Substructure dimensions are along skew.



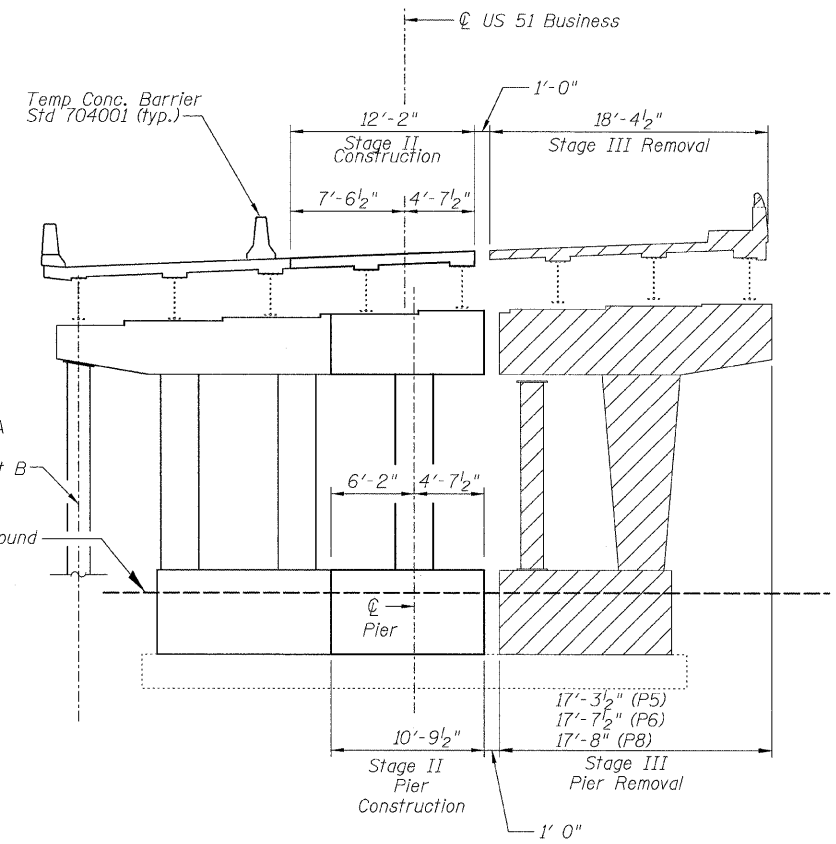
**STAGE I REMOVAL/TRAFFIC**

(Looking North)



**STAGE I CONSTRUCTION, STAGE II REMOVAL/TRAFFIC**

(Looking North)



**STAGE II CONSTRUCTION, STAGE III REMOVAL**

(Looking North)

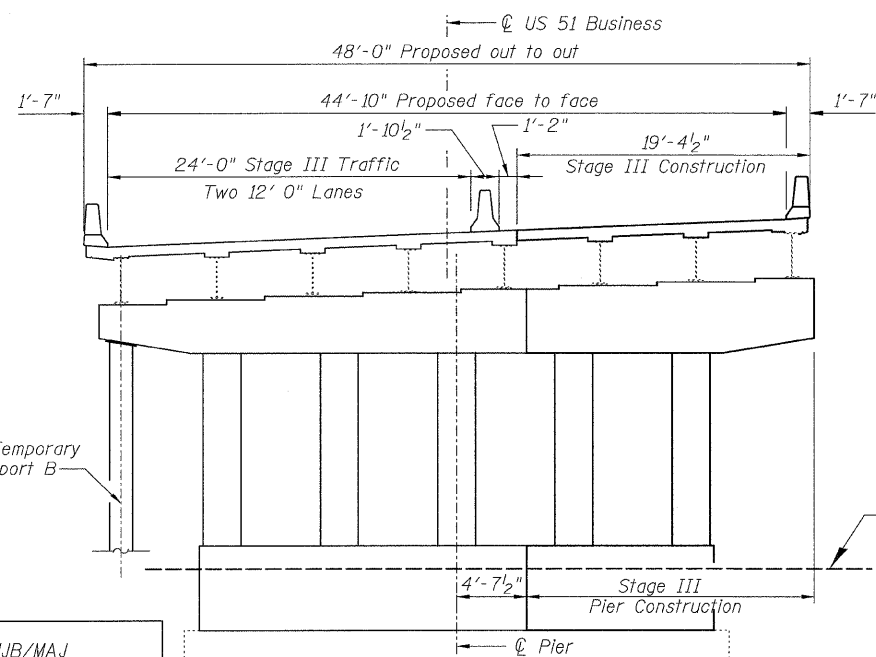
**Temporary Support System**

The temporary support system at each location shall consist of three temporary supports. Each temporary support shall be capable of supporting a vertical load of 300 kips and a lateral load of 30 kips. The sequence of placement of the temporary supports at each location shall be as follows:

1. Temporary Support A shall be in place before Stage I pier removal and shall remain in place until Stage II construction is complete, the concrete has cured and the Stage II traffic has been removed.
2. Temporary Support B shall be in place before Stage II pier removal and shall remain in place until Stage III construction is complete and the concrete has cured.
3. Temporary Support C shall be in place before Stage II pier removal and shall remain in place until Stage II construction is complete, the concrete has cured and the Stage II traffic has been removed.

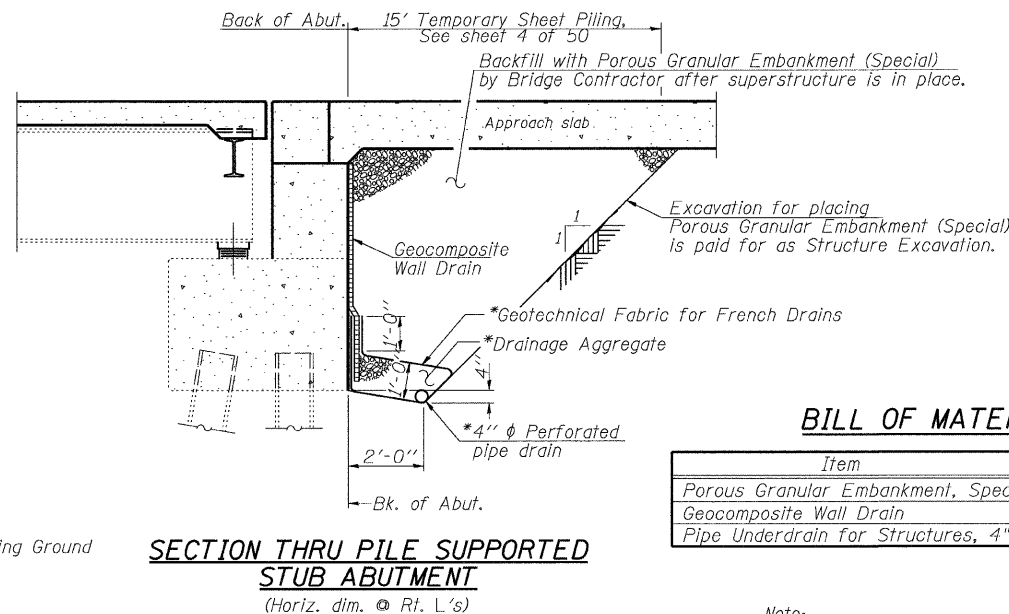
See Special Provisions for Temporary Support System.

**STAGE CONSTRUCTION DETAILS**  
**U.S. 51 BUSINESS OVER CERRO**  
**GORDO ST., N.S.R.R. & WABASH AVE.**  
**F.A.P. ROUTE 710 SECTION (50Z-VB)BR**  
**MACON COUNTY**  
**STATION 1236+06.66**  
**STRUCTURE NO. 058-0014**



**STAGE III CONSTRUCTION/TRAFFIC**

(Looking North)



**SECTION THRU PILE SUPPORTED STUB ABUTMENT**

(Horiz. dim. @ Rf. L's)

\*Included in the cost of Pipe Underdrains for Structures.

Note:

All drainage system components shall extend parallel to the abutment back wall until they intersect the wingwalls or 2'-0" from the end of the wingwalls when the wings are parallel to the abutment. The pipe shall extend under the wingwall, if necessary, until intersecting the side slopes. The pipes shall drain into concrete headwalls. (See Article 601.05 of the Standard Specifications and Highway Standard 60110).

**BILL OF MATERIALS**

Item	Unit	Total
Porous Granular Embankment, Special	Cu. Yd.	171
Geocomposite Wall Drain	Sq. Yd.	85
Pipe Underdrain for Structures, 4"	Cu. Yd.	130

Note:

Pier 5, 6 & 8 typical stage lines shown North & South abutment stage lines similar to Superstructure. No staging on Piers 1, 2, 3, 4, 7 & 9

DESIGNED	MJB/MAJ
CHECKED	JFS
DRAWN	MSJ/MLB
CHECKED	MJB

**Foth**  
Foth Infrastructure & Environment, LLC  
1610 Broadmoor Drive  
Champaign, IL 61821  
Phone: 217-352-4169 Fax: 217-352-0085  
Illinois Registration Number 184-004913

SHEET NO. 3	F.A.P. RTE. 710	SECTION (50Z-VB)BR	COUNTY MACON	TOTAL SHEETS 79	SHEET NO. 29
49 SHEETS	CONTRACT NO. 74215		FED. ROAD DIST. NO. ILLINOIS FED. AID PROJECT		