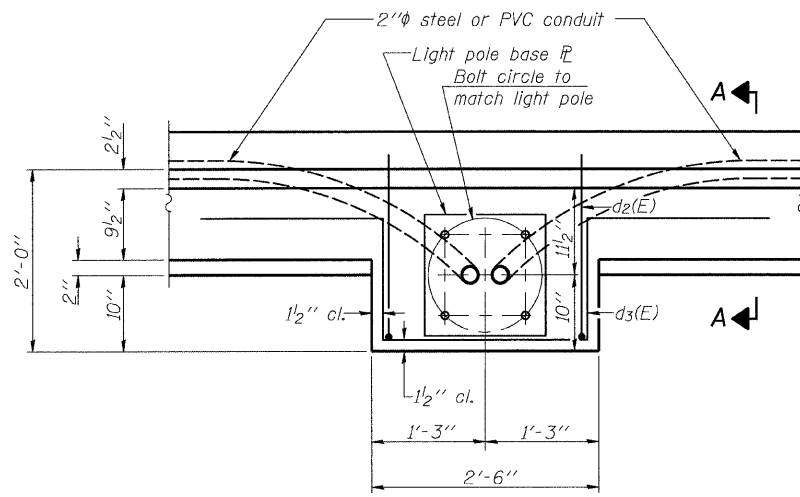


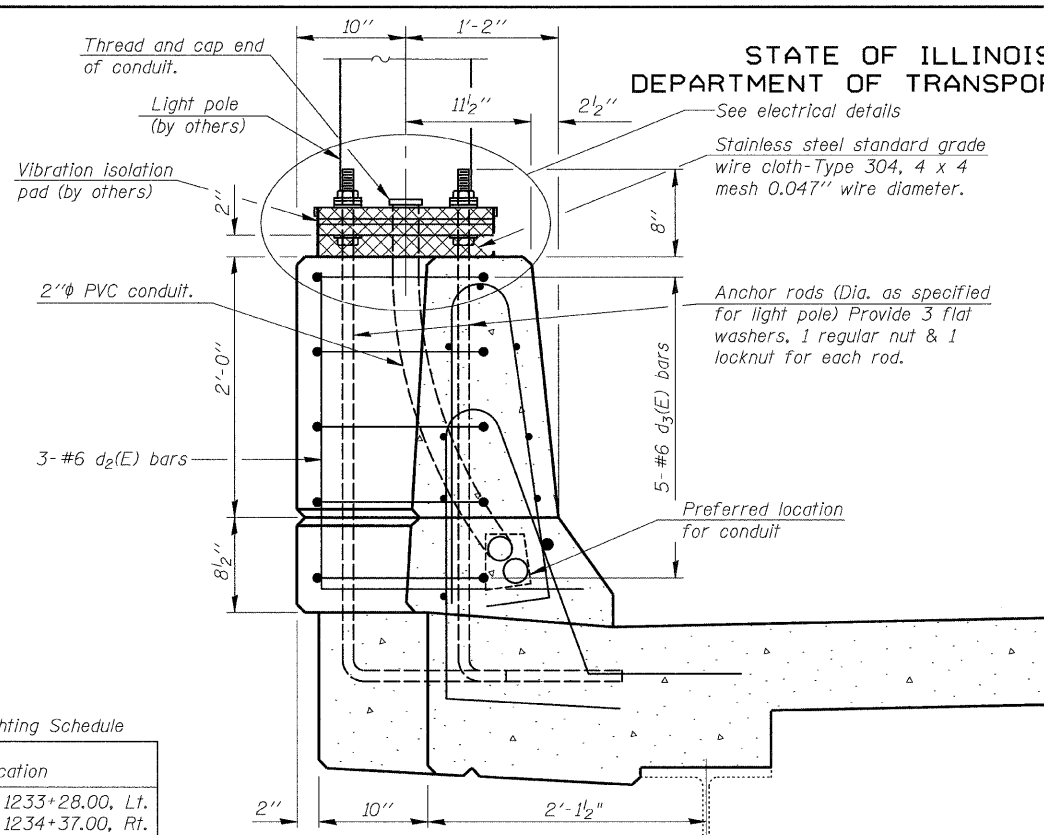
STATE OF ILLINOIS  
DEPARTMENT OF TRANSPORTATION

Note:  
The lighting conduit in the parapets shall exit the bottom of the deck at the abutments, except at the NE quadrant. It shall also exit the bottom of the deck at 4 locations near the south face of Pier 2. Contractor shall transition the PVC conduit to galvanized steel conduit prior to exiting the deck. The conduit shall protrude a minimum of 12" and shall be threaded and capped. Refer to the lighting plans.



PLAN

Note:  
Cost of anchor rods, nuts, washers, and wire cloth are included with Concrete Superstructure.  
Conduit shall be paid for separately and is included in the lighting plans.

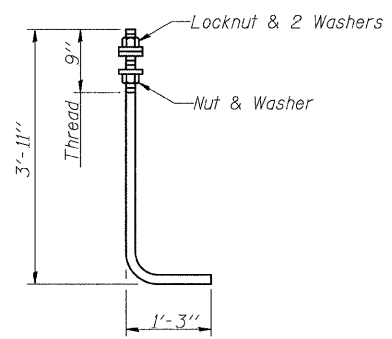


SECTION A-A  
Parapets

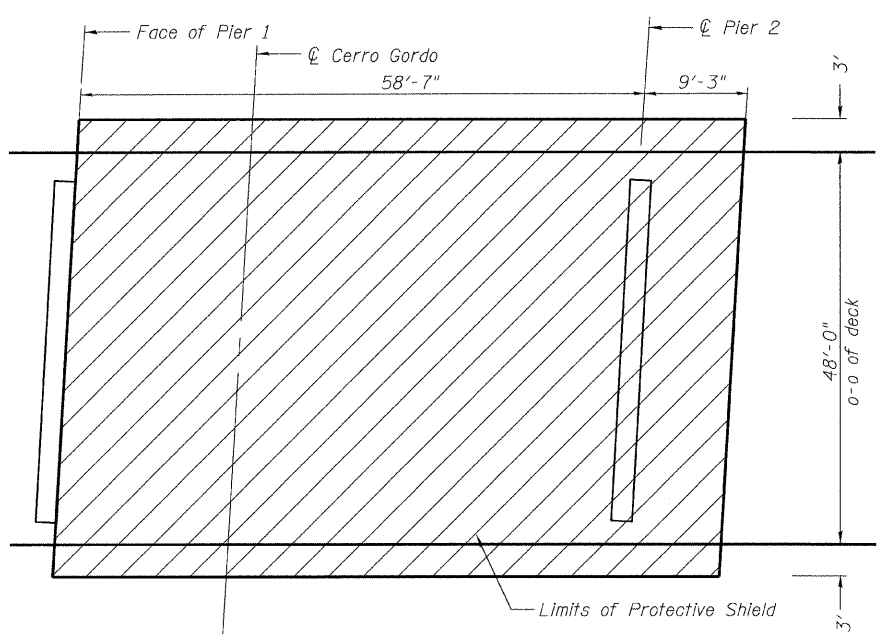
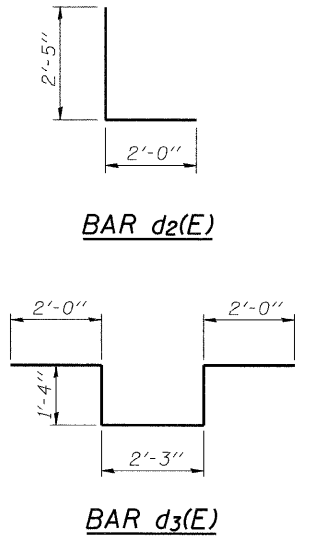
LIGHT POLE FOUNDATIONS

Lighting Schedule

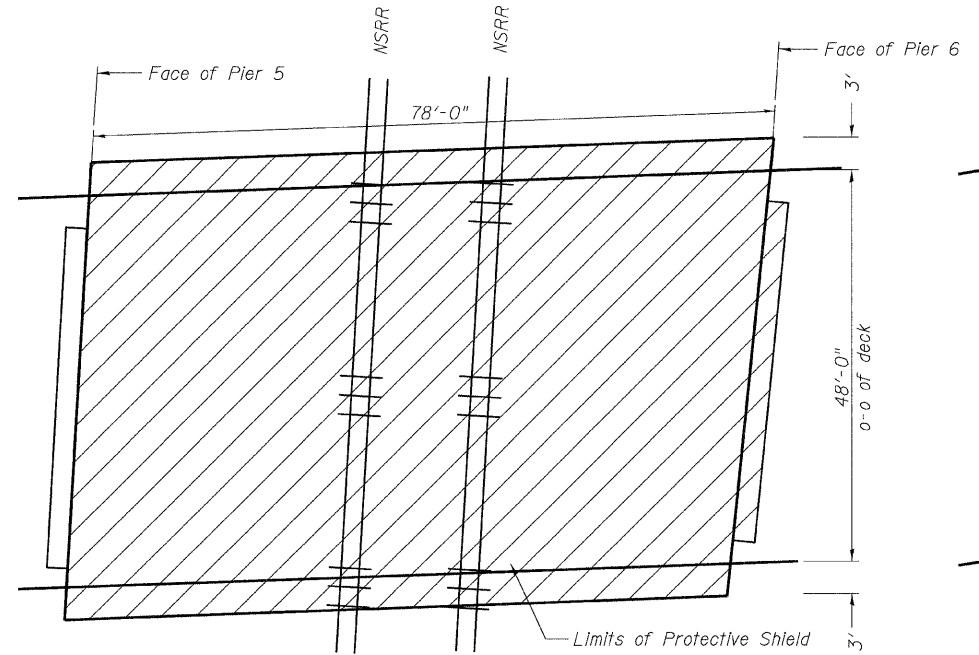
Location
Sta. 1233+28.00, Lt.
Sta. 1234+37.00, Rt.
Sta. 1235+46.00, Lt.
Sta. 1236+55.00, Rt.
Sta. 1237+64.00, Lt.
Sta. 1238+73.00, Rt.



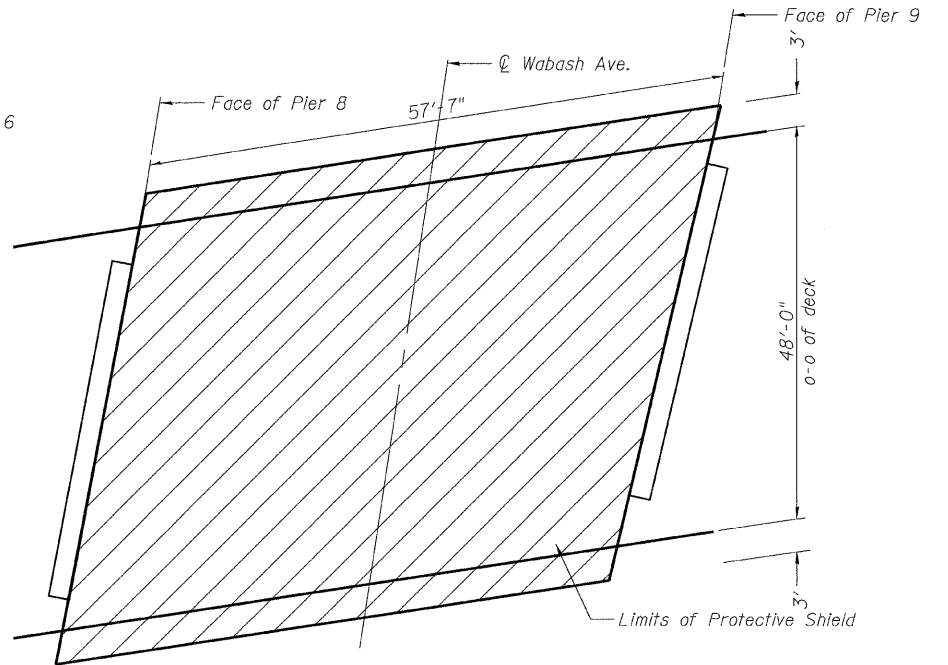
ANCHOR ROD  
Diameter as specified for light poles.  
(ASTM F 1554 Grade 105)



UNIT 1 (SPANS 2 & 3)



UNIT 2 (SPAN 6)



UNIT 4 (SPAN 9)

BILL OF MATERIALS

Item	Unit	Total
Protective Shield	Sq. Yd.	1221

PROTECTIVE SHIELD LAYOUT

DESIGNED - MJB/MAJ
CHECKED - JFS
DRAWN - MSJ/MLB
CHECKED - MJB

**Foth**  
Foth Infrastructure & Environment, LLC  
1610 Broadmoor Drive  
Champaign, IL 61821  
Phone: 217-352-4169 Fax: 217-352-0095  
Illinois Registration Number 184-004813

SHEET NO. 20	F.A. RTE. 710	SECTION (50Z-VB)BR	COUNTY MACON	TOTAL SHEETS 79	SHEET NO. 46
49 SHEETS	CONTRACT NO. 74215		ILLINOIS FED. AID PROJECT		

SUPERSTRUCTURE DETAILS  
STRUCTURE NO. 058-0014