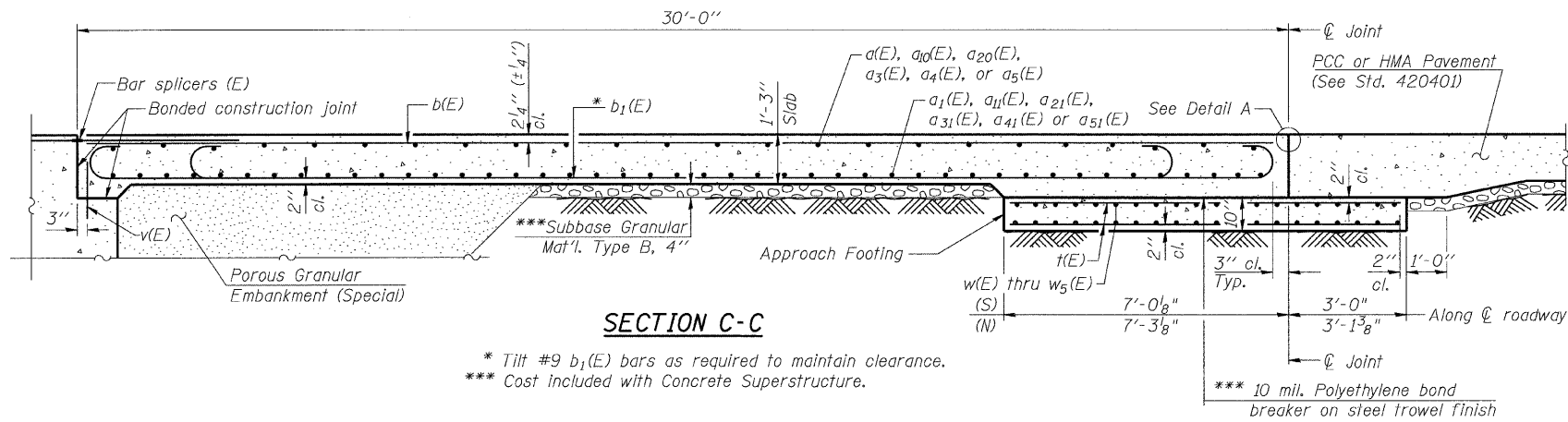


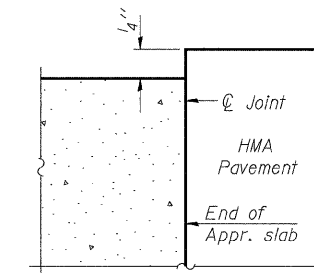
STATE OF ILLINOIS
DEPARTMENT OF TRANSPORTATION

Notes:
Approach slab and parapet concrete shall be paid for as Concrete Superstructure.
Approach footing concrete shall be paid for as Concrete Structures.
Reinforcement shall be paid for as Reinforcement Bars, Epoxy Coated.
For v(E) bar details, see sheets 35 & 36 of 49.
The approach footing maximum applied service bearing pressure (Q_{max}) = 2.0 ksf.
For bar splicer details, see sheet 49 of 49.
Cost of excavation for approach footing included with Concrete Structures.
For Porous Granular Embankment (Special) and drainage treatment details, see sheet 4 of 49.



SECTION C-C

* Tilt #9 b₁(E) bars as required to maintain clearance.
*** Cost Included with Concrete Superstructure.



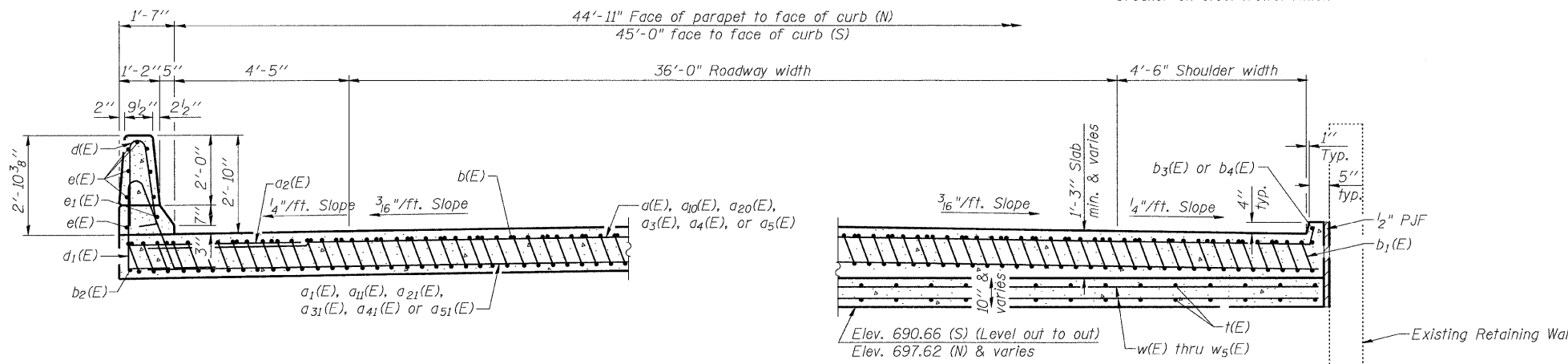
FLEXIBLE PAVEMENT

DETAIL A

*** Cost included with Concrete Superstructure.

TWO APPROACHES
BILL OF MATERIAL

Bar	No.	Size	Length	Shape
a(E)	25	#4	15'-0"	—
a ₁ (E)	46	#5	14'-6"	—
a ₂ (E)	12	#6	6'-0"	—
a ₃ (E)	25	#4	16'-7"	—
a ₄ (E)	25	#4	11'-9"	—
a ₅ (E)	25	#4	18'-10"	—
a ₁₀ (E)	25	#4	11'-3"	—
a ₁₁ (E)	46	#5	11'-3"	—
a ₂₀ (E)	25	#4	17'-11"	—
a ₂₁ (E)	46	#5	17'-6"	—
a ₃₁ (E)	46	#5	15'-9"	—
a ₄₁ (E)	46	#5	11'-9"	—
a ₅₁ (E)	46	#5	18'-0"	—
b(E)	96	#4	29'-8"	—
b ₁ (E)	226	#9	29'-9"	—
b ₂ (E)	1	#4	14'-8"	—
b ₃ (E)	1	#4	14'-8"	—
b ₄ (E)	3	#4	29'-8"	—
d(E)	17	#5	5'-7"	—
d ₁ (E)	17	#5	7'-11"	—
e(E)	8	#4	14'-8"	—
e ₁ (E)	1	#8	14'-8"	—
f(E)	192	#4	9'-8"	—
w(E)	40	#5	14'-6"	—
w ₁ (E)	40	#5	11'-3"	—
w ₂ (E)	40	#5	17'-6"	—
w ₃ (E)	40	#5	15'-9"	—
w ₄ (E)	40	#5	11'-9"	—
w ₅ (E)	40	#5	18'-0"	—
Bar Splicers		Each	444	
Concrete Superstructure		Cu. Yd.	135.6	
Concrete Structures		Cu. Yd.	28.9	
Reinforcement Bars, Epoxy Coated		Pound	36030	
Bridge Deck Grooving		Sq. Yd.	286	
Protective Coat		Sq. Yd.	317	

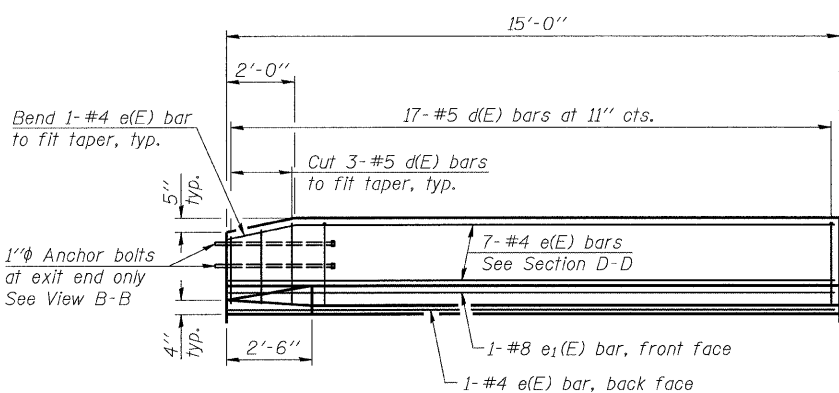


SECTION D-D

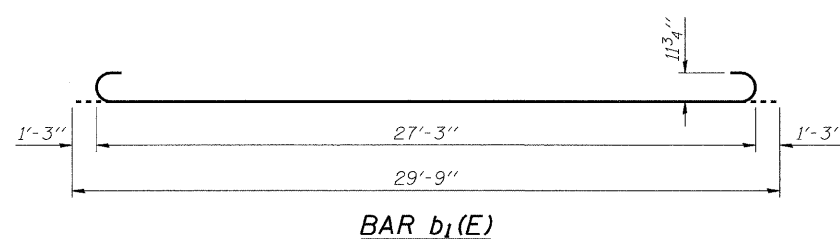
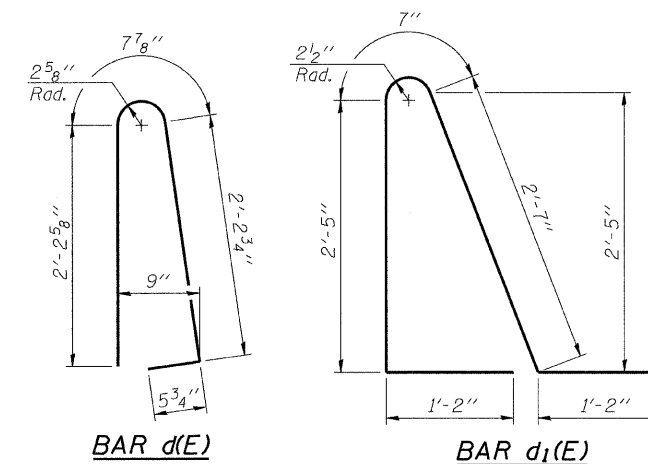
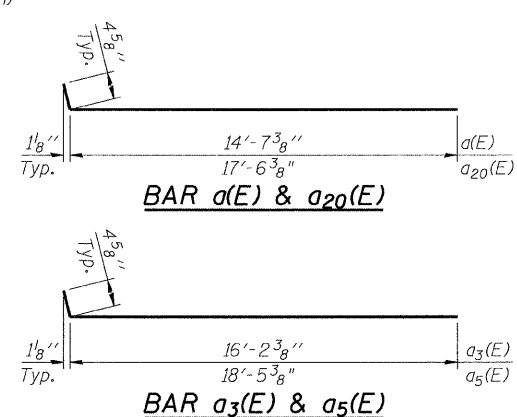
NEAR ABUTMENT
North Approach Slab
Right Side Only

AT APPROACH FOOTING
(Cross Slope shown is for South Approach Slab
North Approach Slab is 4% Superelevated)

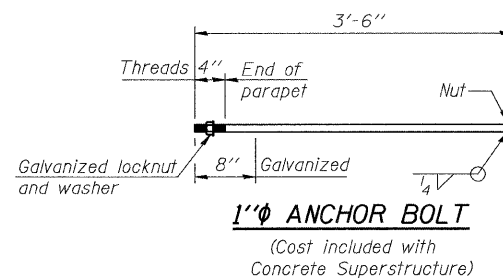
(See Plan for dimensions not shown)



VIEW E-E



BAR b₁(E)



1" ANCHOR BOLT
(Cost included with Concrete Superstructure)

DESIGNED - MJB/MAJ
CHECKED - JFS
DRAWN - MSJ/MLB
CHECKED - MJB
BA-L 10-31-08

Foth
Foth Infrastructure & Environment, LLC
1610 Broadmeow Drive
Champaign, IL 61821
Phone: 217-352-4168 Fax: 217-352-0085
Illinois Registration Number 184.004913

SHEET NO. 22	F.A. RTE. 710	SECTION (50Z-VB)BR	COUNTY MACON	TOTAL SHEETS 79	SHEET NO. 48
49 SHEETS	CONTRACT NO. 74215		FED. ROAD DIST. NO. ILLINOIS FED. AID PROJECT		

(Sheet 2 of 2)
BRIDGE APPROACH SLAB DETAILS
STRUCTURE NO. 058-0014