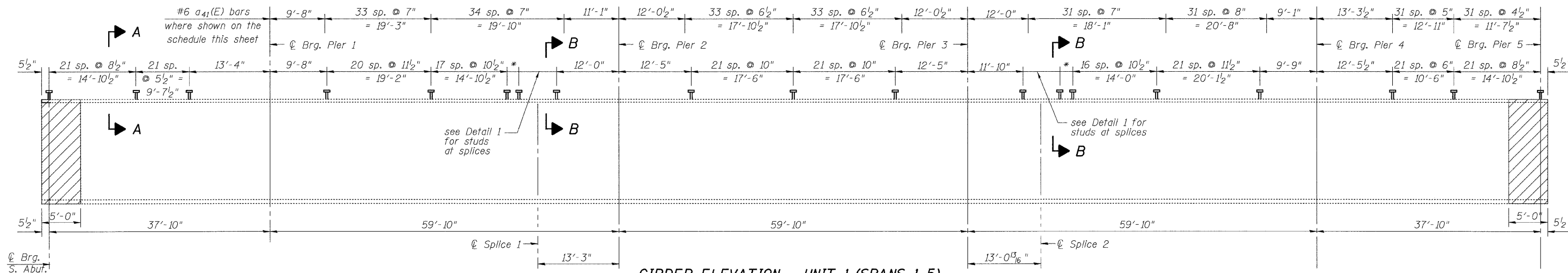
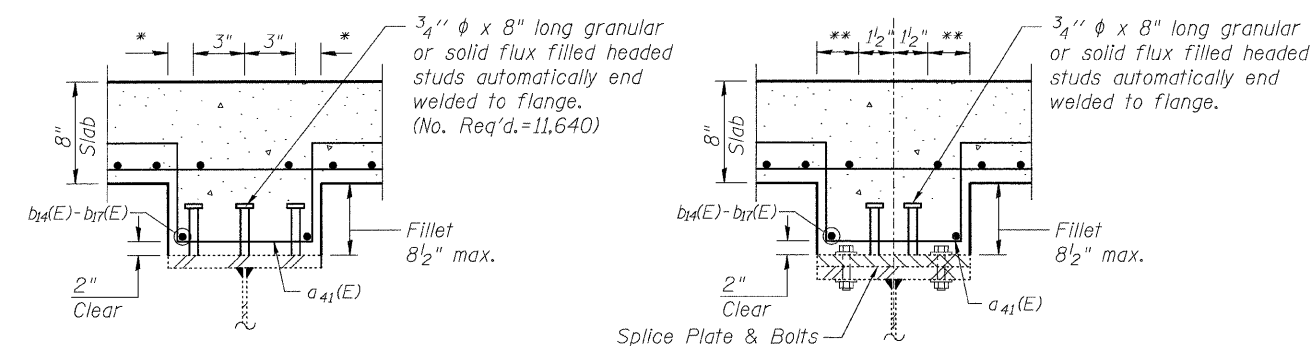


STATE OF ILLINOIS
DEPARTMENT OF TRANSPORTATION



GIRDER ELEVATION - UNIT 1 (SPANS 1-5)

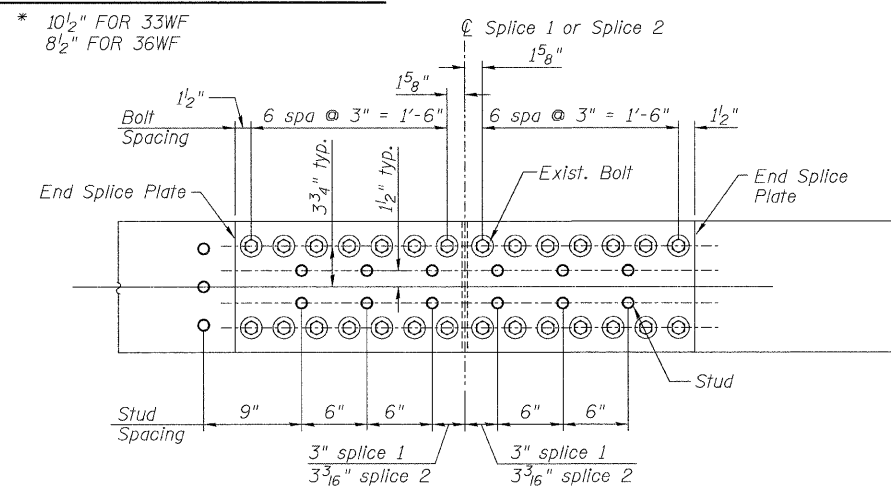


SECTION A-A

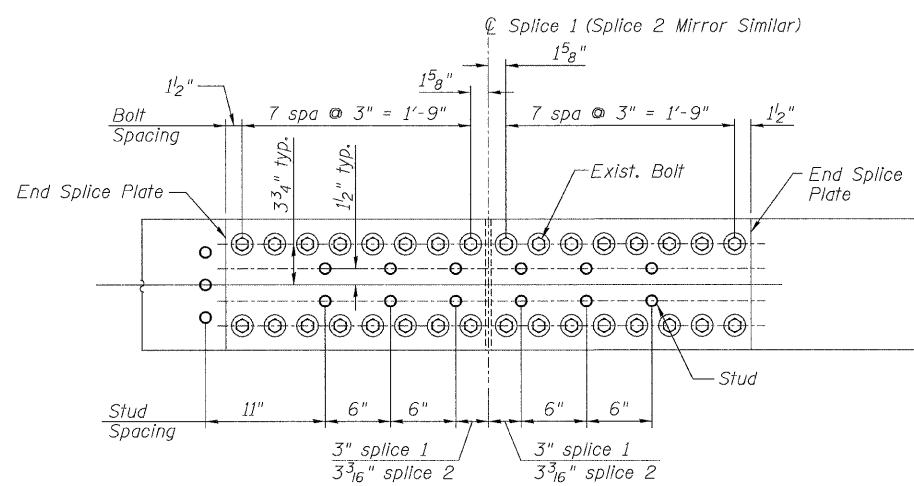
* 2 3/4" for 33WF
3" All others

SECTION B-B (AT SPLICES)

** 4 1/4" for 33WF
4 1/2" All others



PLAN - 33WF (BEAMS 2 - 7)



PLAN - 36WF (BEAMS 1 - 8)

DETAIL 1

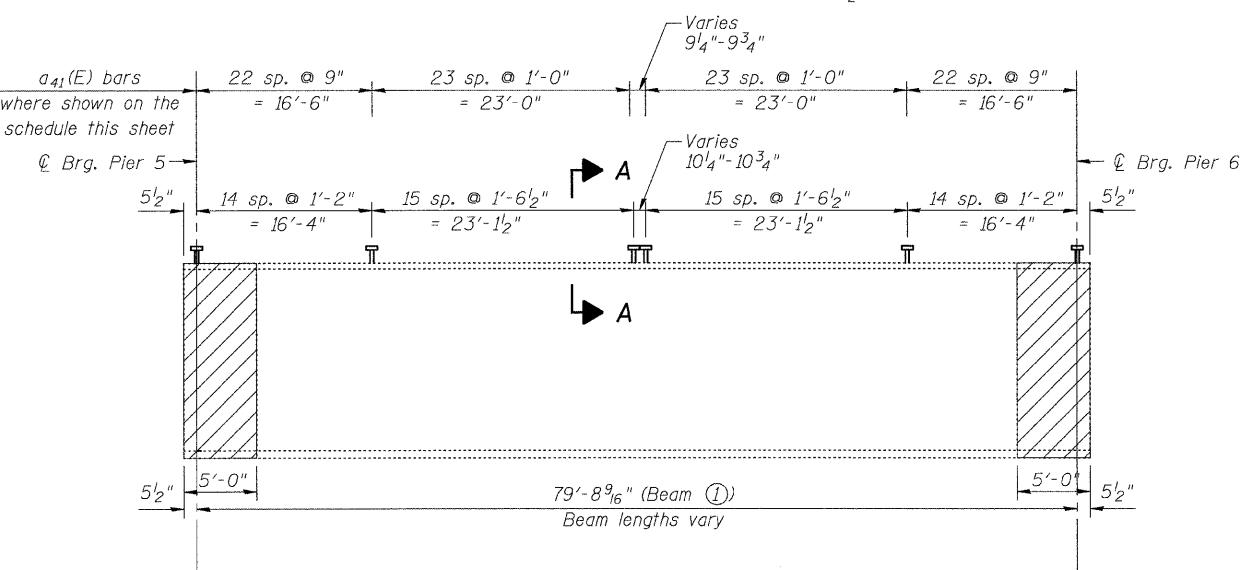
FILLET REINFORCEMENT

a41(E) Bars used in spans shown by "X" spaced as shown in girder elevations.

Span	1	2	3	4	5	6	7	8	9	10
Beam 1			X	X	X			X	X	X
Beam 2			X	X	X			X	X	X
Beam 3			X	X	X			X	X	X
Beam 4		X	X	X	X			X	X	X
Beam 5			X	X	X			X	X	X
Beam 6			X	X	X			X	X	X
Beam 7			X	X	X	X	X	X	X	X
Beam 8			X	X	X	X	X	X	X	X
		2x1 #5 b14(E)	2x1 #5 b15(E)	2x1 #5 b14(E)	2x1 #5 b16(E)	2x2 #5 b14(E)	2x2 #5 b17(E)	2x2 #5 b17(E)	2x2 #5 b17(E)	2x1 #5 b15(E)

b4(E), b15(E), b16(E), & b17(E) bars located in regions with shear studs only and as shown in this schedule. See sheet 17 for Bill of Materials

Minimum reinforcement bar lap splice length #5 = 2'-2"



GIRDER ELEVATION - UNIT 2 (SPAN 6)

DESIGNED - MJB/MAJ
CHECKED - JFS
DRAWN - MSJ/MLB
CHECKED - MJB

G-1 10-1-08

GIRDER ELEVATION
STRUCTURE NO. 058-0014



SHEET NO. 26	F.A. RTE.	SECTION	COUNTY	TOTAL SHEETS	SHEET NO.
49 SHEETS	710	(50Z-VB)BR	MACON	79	52
CONTRACT NO. 74215					
FED. ROAD DIST. NO.		ILLINOIS FED. AID PROJECT			