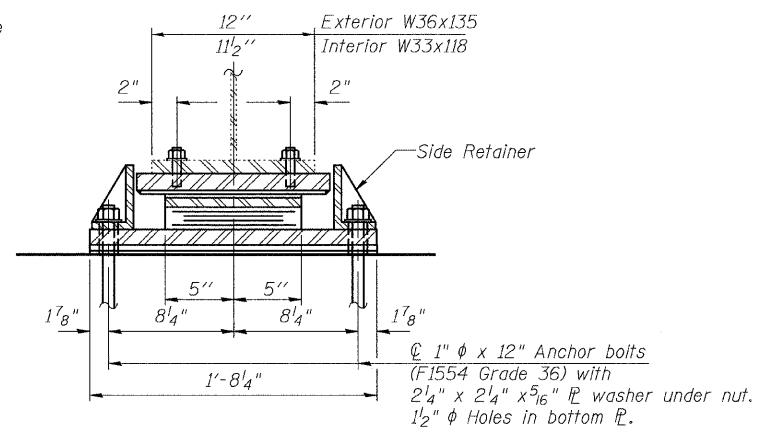
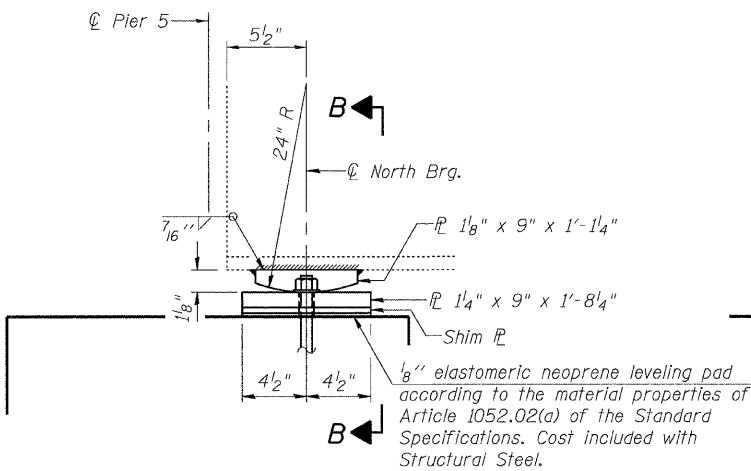


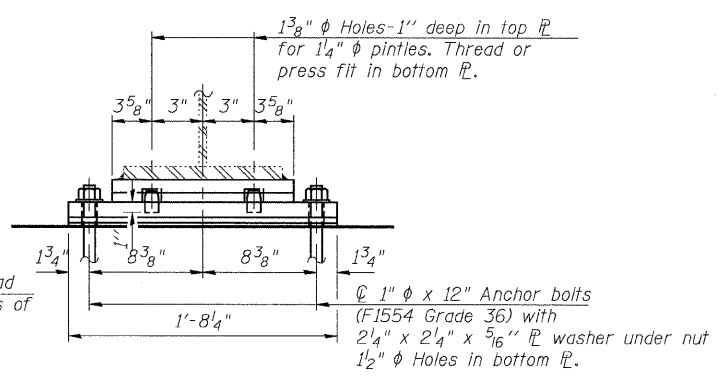
ELEVATION AT PIER 5
(Looking East-Showing South Bearing)



SECTION A-A



ELEVATION AT PIER 5
(Looking West-Showing North Bearing)

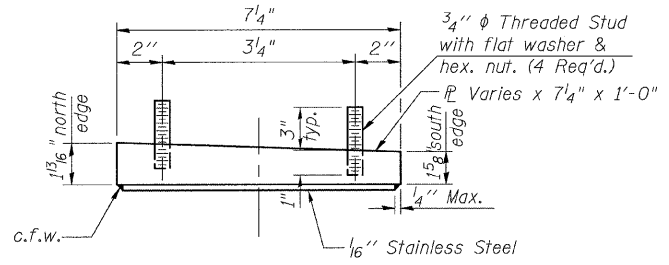


SECTION B-B

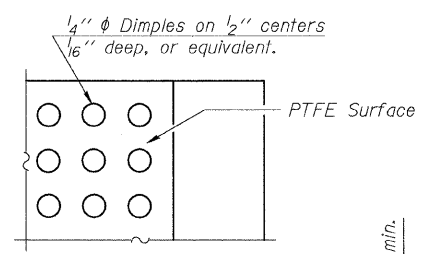
TYPE II ELASTOMERIC EXP. BRG.

FIXED BEARING

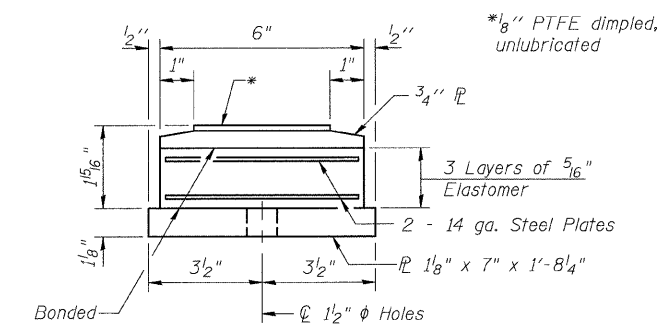
Notes:
See Sheet 29 of 49 for Existing Bearing Removal Detail and Jacking and Cribbing Procedure.
Anchor bolts shall be ASTM F1554 all-thread (or an Engineer-approved alternate material) of the grade(s) and diameter(s) specified. ASTM A307 Grade C anchor bolts may be used in lieu of ASTM F1554 Grade 36 (Fy=36ksi). The corresponding specified grade of AASHTO M314 anchor bolts may be used in lieu of ASTM F1554.
Anchor bolts at fixed bearings may be either cast in place or installed in holes drilled after the supported member is in place.
Anchor bolts for Type II bearings shall be placed in holes drilled in the concrete through holes in the bottom bearing plate after members are in place. Side retainers shall be placed after bolts are installed.
Drilled and set anchor bolts shall be installed according to Article 521.06 of the Standard Specifications.
Side retainers and other steel members required for the bearing assembly shall be included in the cost of Elastomeric Bearing Assembly, Type II.
The 1/8 inch PTFE sheet shall be bonded directly to the top steel plate with a two-component, medium viscosity epoxy resin, conforming to the requirements of the Federal Specification MMM-A-134, Type I. The bond agent shall be applied on the full area of the contact surfaces.
Bonding of 1/8 inch PTFE sheet during vulcanizing process will be permitted provided the process and method of adjusting assembly height is approved by the Engineer.
The cost of field drilling holes in bottom flange of existing beams is included in Elastomeric Bearing Assembly, Type II.



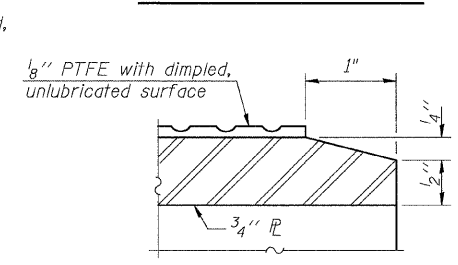
TOP BEARING ASSEMBLY



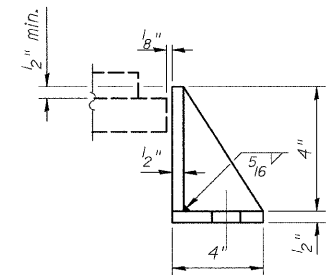
PLAN-PTFE SURFACE



BOTTOM BEARING ASSEMBLY

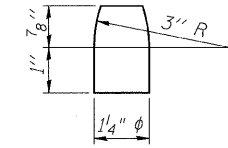


SECTION THRU PTFE

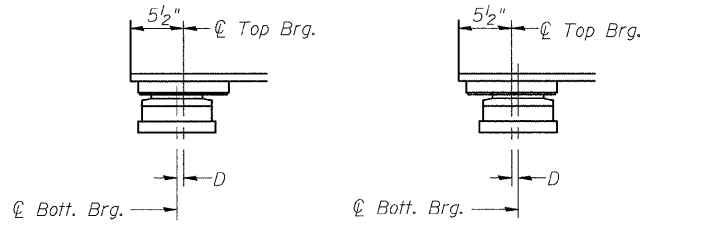


SIDE RETAINER

Equivalent rolled angle with stiffeners will be allowed in lieu of welded plates.



PINTLE



SETTING ANCHOR BOLTS AT EXP. BRG.
D = 1/8 inch per each 100 feet of expansion for every 15 degree temperature change from the normal temperature of 50 degrees Fahrenheit.

TABLE OF SHIM PLATES

Beam No.	Pier Location	Pier #5 (S) Inches	Pier #5 (N) Inches
#1		0	2
#2		1/16	0
#3		1/16	0
#4		1/16	0
#5		1/16	0
#6		1/16	0
#7		1/16	0
#8		0	2

BILL OF MATERIAL

Item	Unit	Total
Elastomeric Bearing Assembly, Type II	Each	8
Anchor Bolts, 1"	Each	32

BEARING DETAILS-PIER 5
STRUCTURE NO. 054-0014

SHEET NO. 30	F.A.P. RTE.	SECTION	COUNTY	TOTAL SHEETS	SHEET NO.
49 SHEETS	710	(50Z-VB)BR	MACON	79	56
CONTRACT NO. 74215					
FED. ROAD DIST. NO. 7 ILLINOIS FED. AID PROJECT					

Coombe-Bloxdorf P.C.
-CIVIL ENGINEERS-
-STRUCTURAL ENGINEERS-
-LAND SURVEYORS-
Design Firm License No. 184-002703

PROJECT NO. 07086
SCALE / / /
DATE / / /
DESIGN BY / / /
DRAWN BY TFG/CFC
CHECKED BY GB/MCB