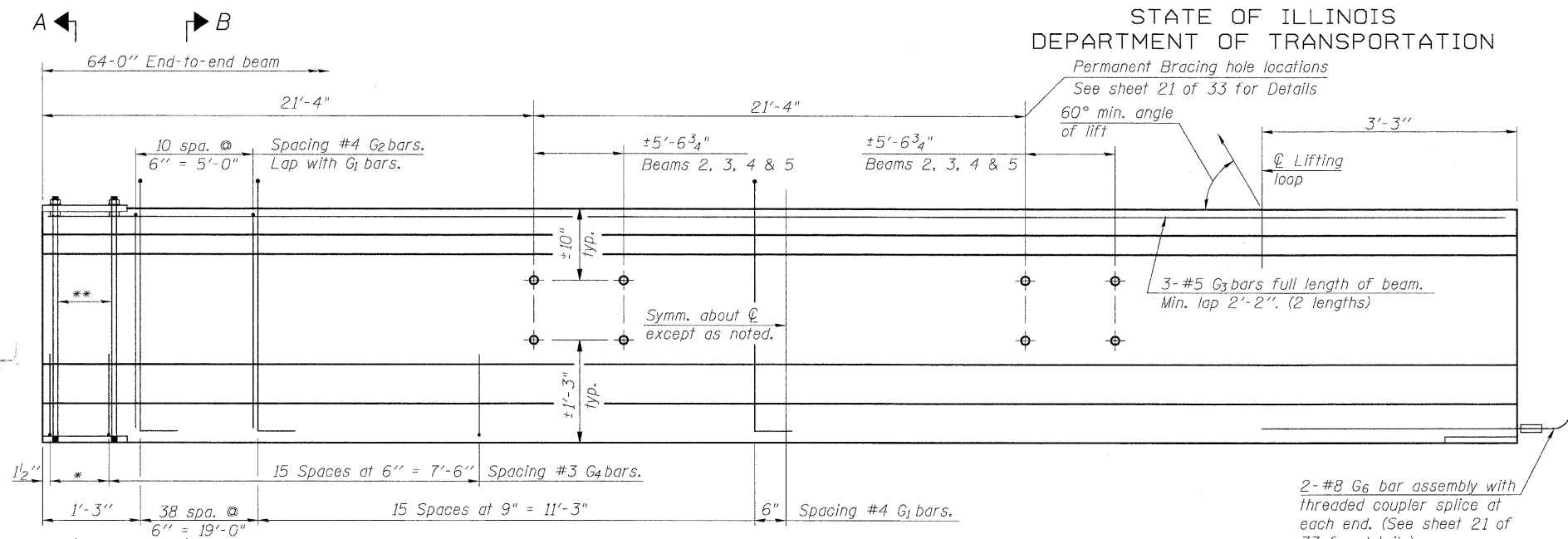


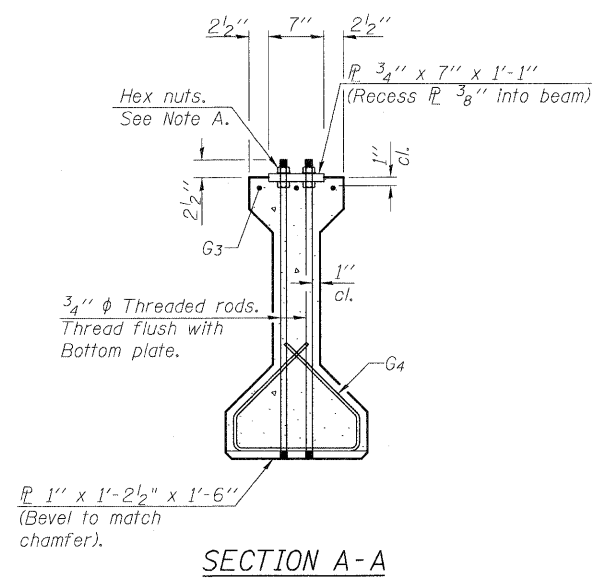
STATE OF ILLINOIS
DEPARTMENT OF TRANSPORTATION



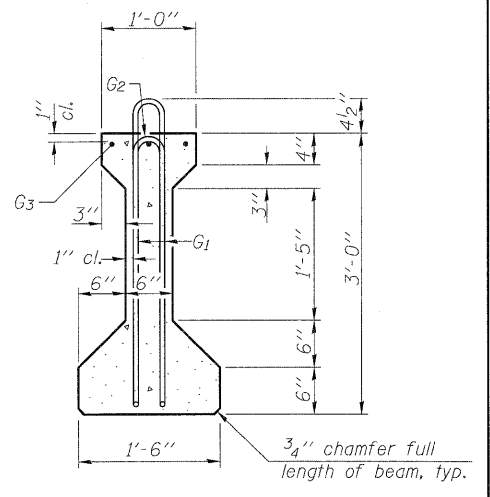
ELEVATION OF BEAM
(Showing reinforcement & dimensions)

* 3 spaces at 3" = 9".
** 4-3/4" φ threaded dowel rods at 3" cts., Each Face

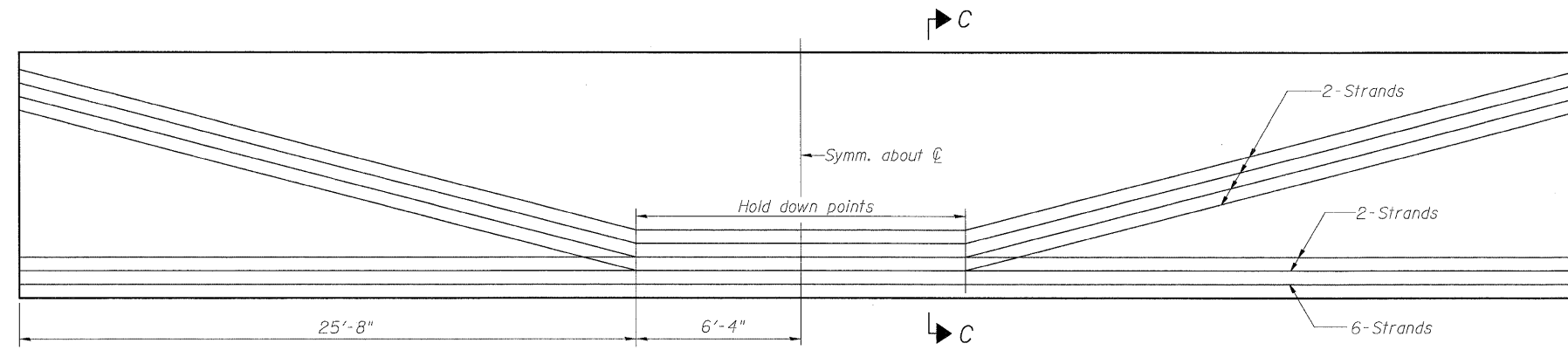
Note A:
Hex nuts (top and bottom) with lock washers (top). Only tighten sufficiently to compress lock washers.



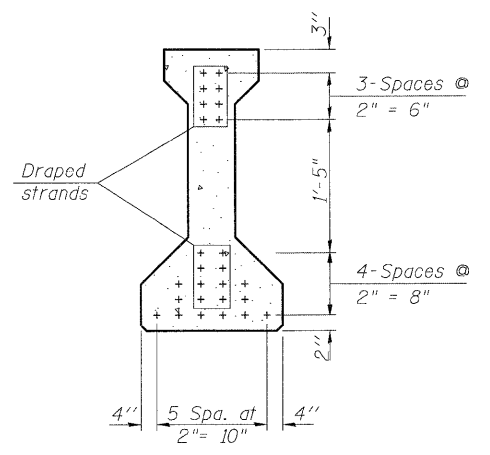
SECTION A-A



SECTION B-B



ELEVATION OF BEAM
(Showing prestressing steel)



SECTION C-C

*****BAR LIST
ONE BEAM ONLY**

Bar	No.	Size	Length	Shape
G ₁	108	#4	7'-5"	∩L
G ₂	22	#4	5'-8"	∩
G ₃	6	#5	33'-1"	—
G ₄	38	#3	4'-1"	∩
G ₆	4	#8	6'-6"	—

***For information only

Notes:
See sheet 21 of 33 for additional details and Bill of Material.
Required release strength, f'ci, shall be 5,000 psi.

DESIGNED	SCD
CHECKED	DRB
DRAWN	THW
CHECKED	SCD

ie
consultants
IE CONSULTANTS, INC
6420 SOUTH SIXTH STREET
SPRINGFIELD, ILLINOIS 62712
TEL. (217) 529-8027
FAX (217) 529-4643
WWW.IE-CONSULTANTS.COM

PI-4-36 10-1-08

**36" P.P.C. I-BEAM
SPAN 2
S.N. 018-0064**

SHEET NO. 20 OF 33 SHEETS	F.A.P. RTE.	SECTION	COUNTY	TOTAL SHEETS	SHEET NO.
	116	(112BR1)B	CUMBERLAND	72	51
CONTRACT NO. 74236					
FED. ROAD DIST. NO. ILLINOIS FED. AID PROJECT					