

F.A.S. RTE.	SECTION	COUNTY	TOTAL SHEETS	SHEET NO.
2796	(L,K)RS-2	EFFINGHAM	58	1
FED. ROAD DIST. NO.	ILLINOIS	CONTRACT NO.	74317	

*58+1=59

D-97-033-08

STATE OF ILLINOIS
DEPARTMENT OF TRANSPORTATION
DIVISION OF HIGHWAYS

**PROPOSED
HIGHWAY PLANS**

FAS ROUTE 2796 (US 40)
SECTION (L,K)RS-2

MILLING AND RESURFACING
EFFINGHAM COUNTY

C-97-078-08

FOR INDEX OF SHEETS, SEE SHEET NO. 2

STATION EQUATIONS:

- STA. 1897 + 10 (BK) = STA. 1202 + 24 (AH)
- STA. 1219 + 01.8 (BK) = STA. 1219 + 02 (AH)
- STA. 1366 + 28 (BK) = STA. 1366 + 00 (AH)

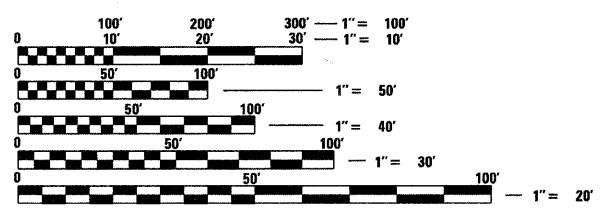
PAVING OMISSIONS

- STA. 1320 + 41.00 TO STA. 1322 + 26.00
- STA. 1333 + 85.00 TO STA. 1337 + 15.00
- STA. 1342 + 35.00 TO STA. 1345 + 65.00
- STA. 1386 + 50.00 TO STA. 1399 + 75.00

2009 ADT = 4,900

FAS RTE. 2796 (US RTE 40)
SECTION (L,K)RS-2
EFFINGHAM COUNTY
BEGINS STA. 1889 + 18

FAS RTE. 2796 (US RTE 40)
SECTION (L,K)RS-2
EFFINGHAM COUNTY
ENDS STA. 1450 + 65

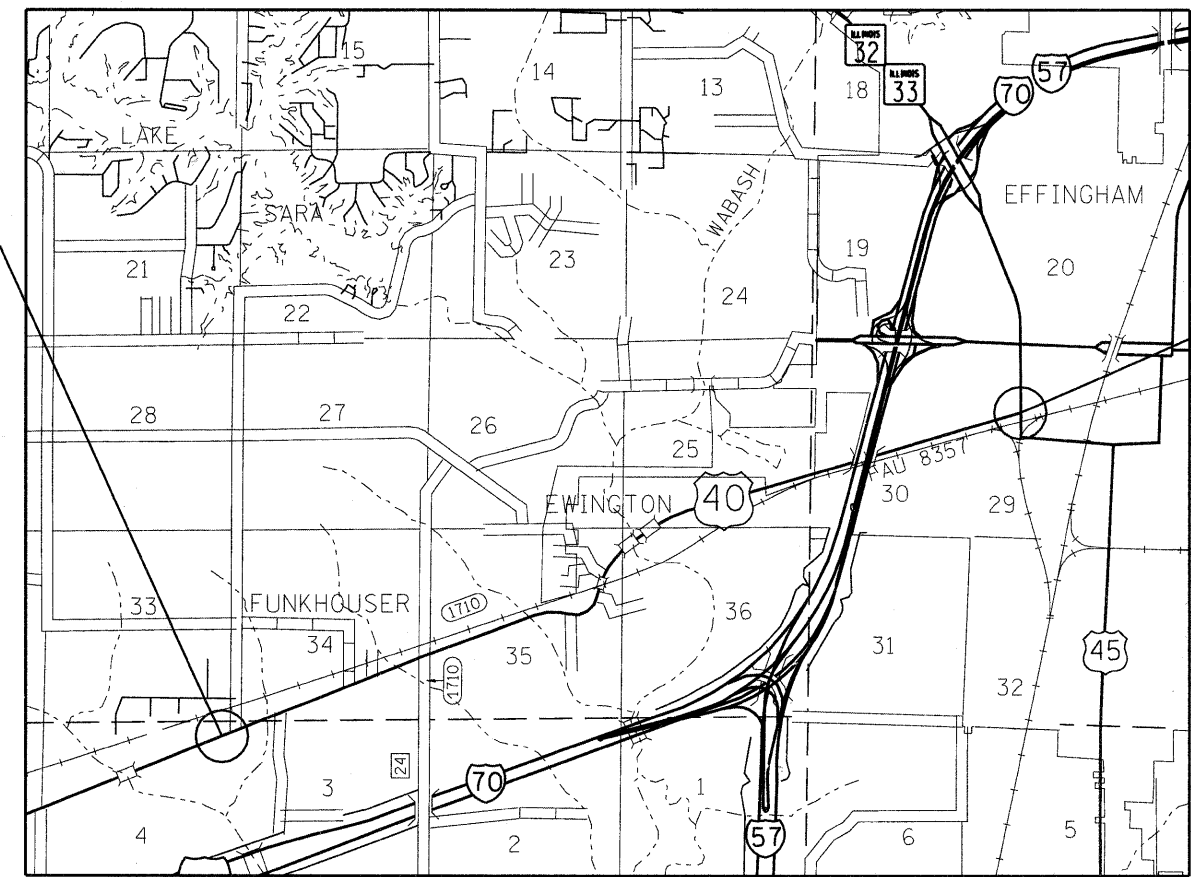


FULL SIZE PLANS HAVE BEEN PREPARED USING STANDARD ENGINEERING SCALES. REDUCED SIZED PLANS WILL NOT CONFORM TO STANDARD SCALES. IN MAKING MEASUREMENTS ON REDUCED PLANS, THE ABOVE SCALES MAY BE USED.

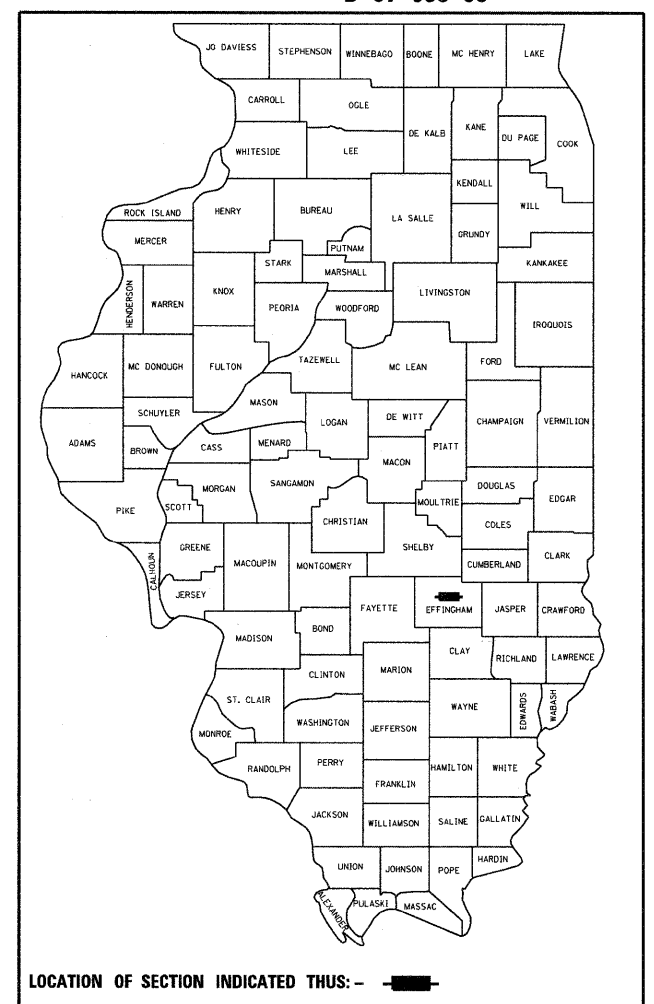
J.U.L.I.E.
JOINT UTILITY LOCATION INFORMATION FOR EXCAVATION
1-800-892-0123
OR 811

TOWNSHIP: SUMMIT

PROJECT ENGINEER: TOM RONAN
PROJECT MANAGER: JENNIFER WENTHE
PHONE NO.: (217) 342-8361
CONTRACT NO. 74317



GROSS LENGTH = 25,661 FT. = 4.86 MILE
NET LENGTH = 23,491 FT. = 4.45 MILE



LOCATION OF SECTION INDICATED THUS: - [black rectangle] -

STATE OF ILLINOIS
DEPARTMENT OF TRANSPORTATION
DIVISION OF HIGHWAYS

SUBMITTED 3-18 20 10
By: *Boyan J. Onakell*
DEPUTY DIRECTOR OF HIGHWAYS, REGION ENGINEER

May 7 20 10
By: *Scott E. Stitt, P.E.*
Acting ENGINEER OF DESIGN AND ENVIRONMENT

May 7 20 10
By: *Christina M. Roedel*
DIRECTOR OF HIGHWAYS, CHIEF ENGINEER

PRINTED BY THE AUTHORITY
OF THE STATE OF ILLINOIS