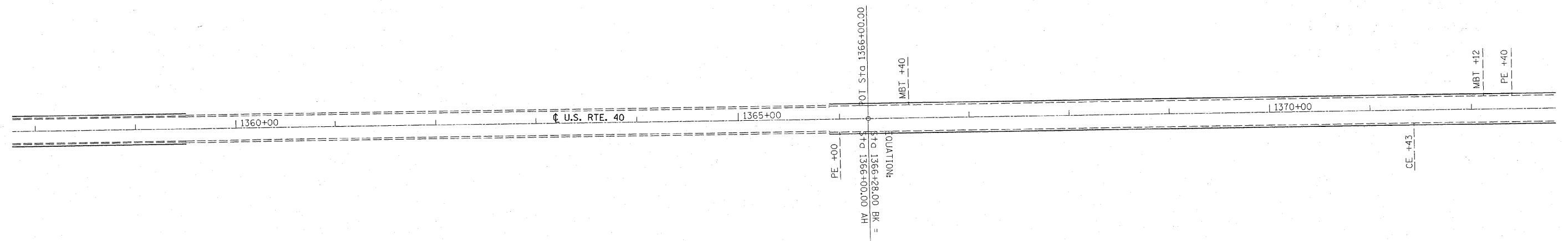
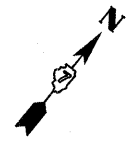
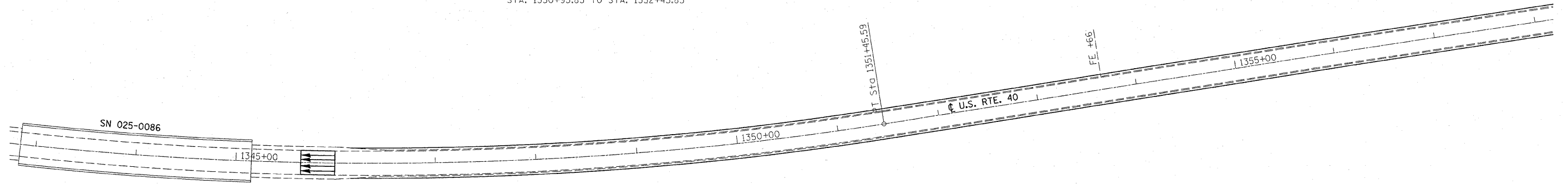
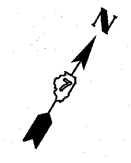


EXIST. CURVE C9
 P.I. STA. = 1346+62.66
 $\Delta = 17^\circ 01' 45''$ (LT)
 $D = 1^\circ 45' 00''$
 $R = 3,274.05'$
 $T = 490.16'$
 $L = 973.10'$
 $E = 36.49'$
 P.C. STA. = 1341+72.50
 P.T. STA. = 1351+45.59
 $S.E. = 0.035 \text{ FT./FT.}$
 S.E. ATTAINED STA. 1340+72.73 TO STA. 1342+22.73
 STA. 1350+95.83 TO STA. 1352+45.83



FILE NAME = c:\pwork\PWIDOT\SWARTZRW\dms54414\ahplan.74317.dgn	USER NAME = swartzrw	DESIGNED -	REVISED -	STATE OF ILLINOIS DEPARTMENT OF TRANSPORTATION	PLAN SHEETS			F.A.S. RTE.	SECTION	COUNTY	TOTAL SHEETS	SHEET NO.
	PLOT SCALE = 50.0000' / IN.	DRAWN -	REVISED -					2796	(L,KIRS-2	EFFINGHAM	58	25
	PLOT DATE = 3/17/2010	CHECKED -	REVISED -		SCALE: 50 SHEET NO. 6 OF 9 SHEETS STA. 1343+00 TO STA. 1372+00			CONTRACT NO. 74317				
		DATE -	REVISED -		ILLINOIS FED. AID PROJECT							