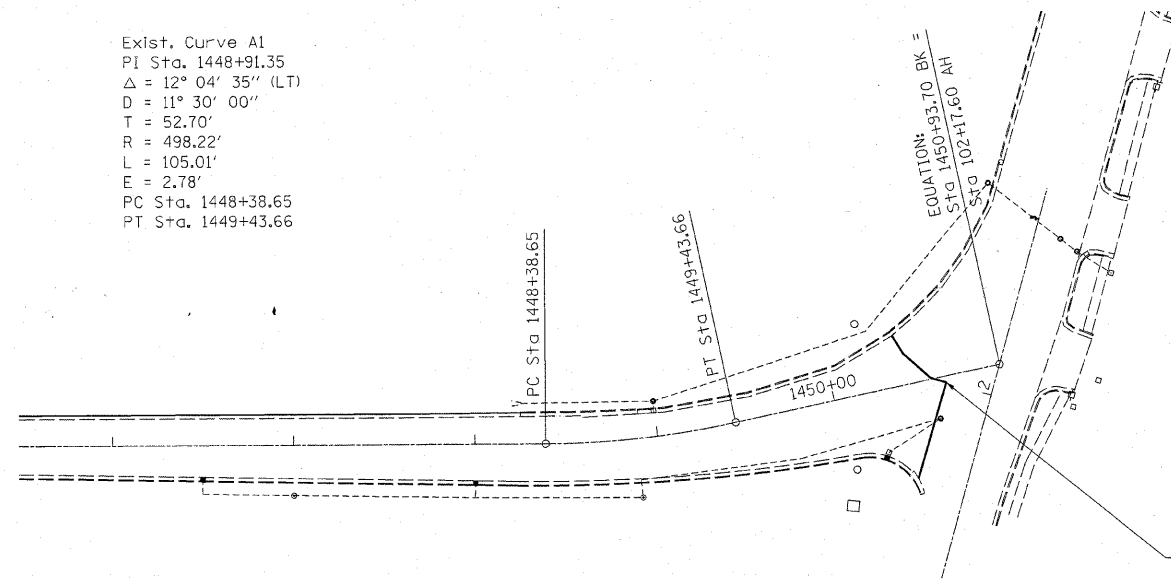


Exist. Curve A1  
 PI Sta. 1448+91.35  
 $\Delta = 12^\circ 04' 35''$  (LT)  
 $D = 11^\circ 30' 00''$   
 $T = 52.70'$   
 $R = 498.22'$   
 $L = 105.01'$   
 $E = 2.78'$   
 PC Sta. 1448+38.65  
 PT Sta. 1449+43.66



FAS 2796 (U.S. RTE. 40)  
 SECTION (L,K)RS-2  
 EFFINGHAM COUNTY  
 ENDS STATION 1450+65



FILE NAME =	USER NAME = swartzw	DESIGNED -	REVISED -	<b>STATE OF ILLINOIS DEPARTMENT OF TRANSPORTATION</b>	<b>PLAN SHEETS</b>			F.A.S. RTE.	SECTION	COUNTY	TOTAL SHEETS	SHEET NO.
c:\pw_work\PWIDOT\SWARTZRW\dms54414\sh	plan_74317.dgn	DRAWN -	REVISED -		SCALE: 50	SHEET NO. 9 OF 9 SHEETS	STA. 1432+00 TO STA. 1450+65	2796	(L,K)RS-2	EFFINGHAM	58	28
	PLOT SCALE = 50.0000' / IN.	CHECKED -	REVISED -		CONTRACT NO. 74317							
	PLOT DATE = 3/17/2010	DATE -	REVISED -		ILLINOIS FED. AID PROJECT							