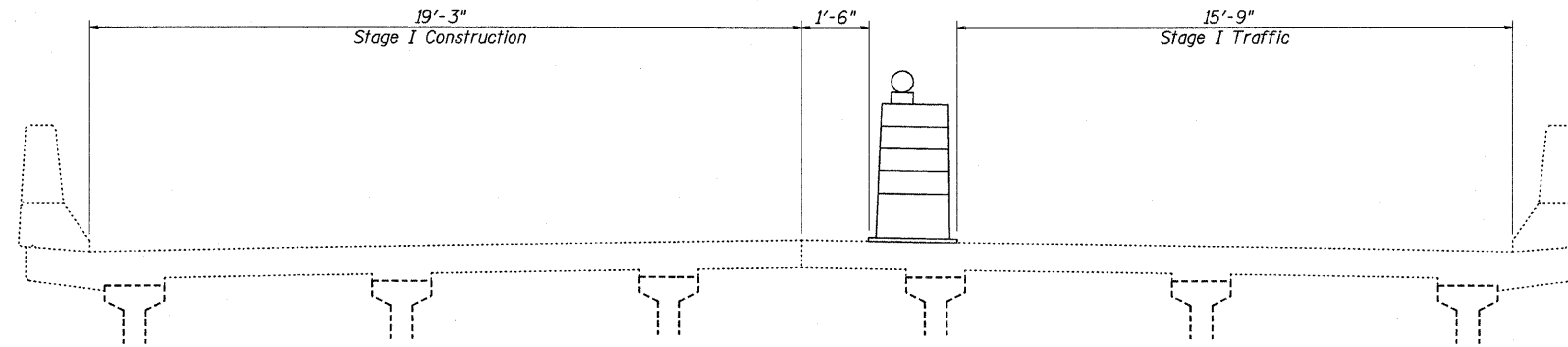


**GENERAL NOTES**

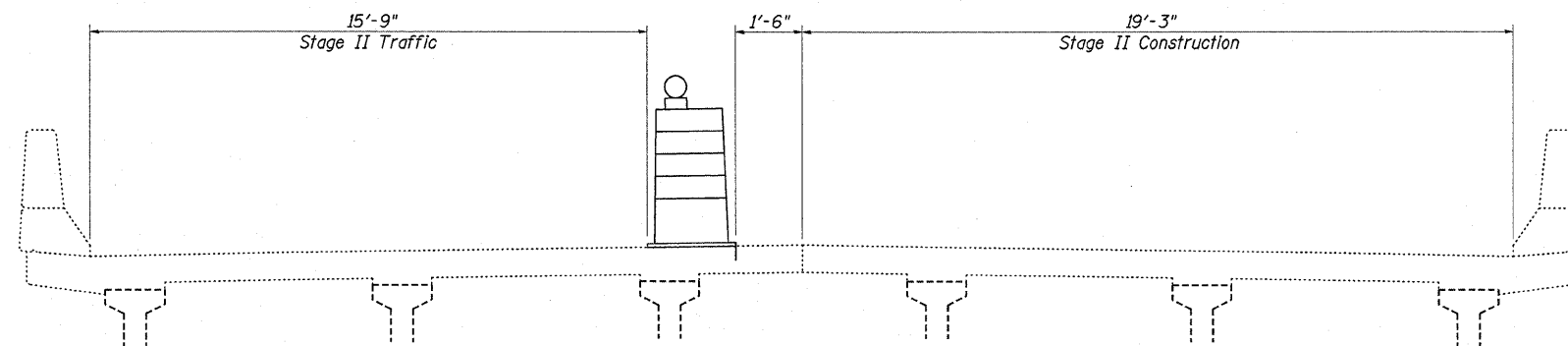
All structural steel shall conform to AASHTO Classification M-270 Gr. 36, unless otherwise noted.  
 Existing reinforcement bars extending into the removal area shall be cleaned, straightened and incorporated into the new construction. Any reinforcement bars that are damaged during concrete removal shall be replaced with an approved bar splicer or anchorage system. Cost included with Concrete Removal.  
 Joint openings shall be adjusted according to Article 520.04 of the Std. Specs. when the deck is poured at an ambient temperature other than 50° F.  
 Prior to pouring the new concrete deck, all heavy or loose rust, loose mill scale, and other loose or potentially detrimental foreign material shall be removed from the surfaces in contact with concrete. Tightly adhered paint may remain unless otherwise noted. Removal shall be accomplished by methods that will not damage the steel and the cost will be included in the pay item covering removal of the existing concrete.  
 Reinforcement bars shall conform to the requirements of ASTM A 706 Gr 60. See Special Provisions.  
 Reinforcement bars designated (E) shall be epoxy coated.  
 Plan dimensions and details relative to existing plans are subject to nominal construction variations. The Contractor shall field verify existing dimensions and details affecting new construction and make necessary approved adjustments prior to construction or ordering of materials. Such variations shall not be cause for additional compensation for a change in scope of the work; however, the Contractor will be paid for the quantity actually furnished at the unit price bid for the work.  
 All structural steel shall be shop painted with the inorganic zinc rich primer per AASHTO M300, Type I. Cost included with Preformed Joint Strip Seal.

**TOTAL BILL OF MATERIALS**

ITEM DESCRIPTION	UNIT	QUANTITY
Concrete Removal	Cu. Yd.	2.5
Concrete Superstructure	Cu. Yd.	2.5
Reinforcement Bars, Epoxy Coated	Pound	330
Bar Splicers	Each	4
Preformed Joint Strip Seal	Foot	42
Silicone Joint Sealer, 1 3/4"	Foot	42



**STAGE I LOOKING EAST**



**STAGE II LOOKING EAST**

FILE NAME =	USER NAME = swartzw	DESIGNED - MEA	REVISED -	<b>STATE OF ILLINOIS DEPARTMENT OF TRANSPORTATION</b>	<b>GENERAL NOTES, BILL OF MATERIALS, STAGING PLAN S.N. 025-0079</b>	F.A.S. RTE.	SECTION	COUNTY	TOTAL SHEETS	SHEET NO.	
c:\pwwork\pwwork\swartzw\dms54418\077	317-brgennotes-025-0079.dgn	DRAWN - MEA	REVISED -			2796	(L,K)RS-2	EFFINGHAM	58	47	
	PLOT SCALE = 20,0000' / IN.	CHECKED -	REVISED -			CONTRACT NO. 74317					
	PLOT DATE = 3/18/2010	DATE -	REVISED -			ILLINOIS FED. AID PROJECT					
					SCALE: NA	SHEET NO. 3 OF 15 SHEETS		STA.	TO STA.		