

F.A.P. RTE.	SECTION	COUNTY	TOTAL SHEETS	SHEET NO.
116	(18-47HB-1)BR	CUMBERLAND	20	1
FED. ROAD DIST. NO.	ILLINOIS	CONTRACT NO. 74346		

**STATE OF ILLINOIS
DEPARTMENT OF TRANSPORTATION
DIVISION OF HIGHWAYS**

**PROPOSED
HIGHWAY PLANS**

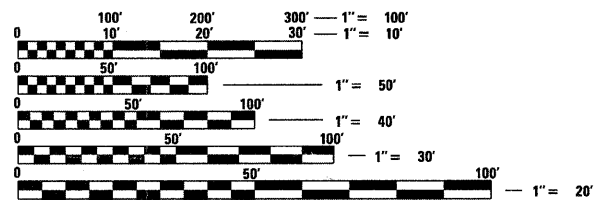
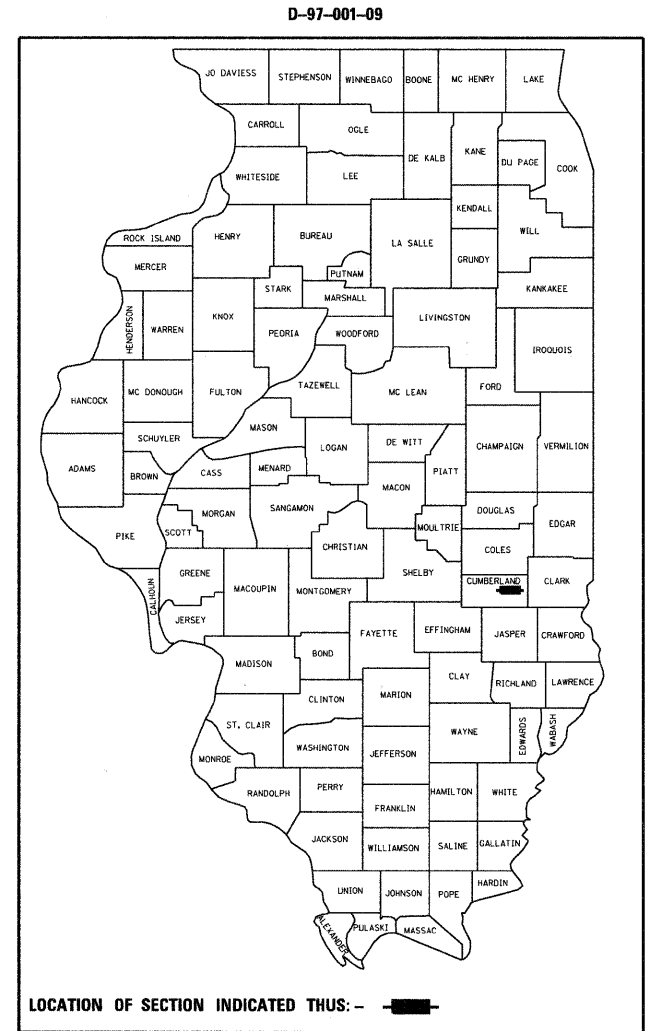
**FAP ROUTE 116 (IL 130)
SECTION (18-47HB-1)BR**

**BRIDGE DECK REPAIRS & OVERLAY
CUMBERLAND COUNTY**

FOR INDEX OF SHEETS, SEE SHEET NO. 2

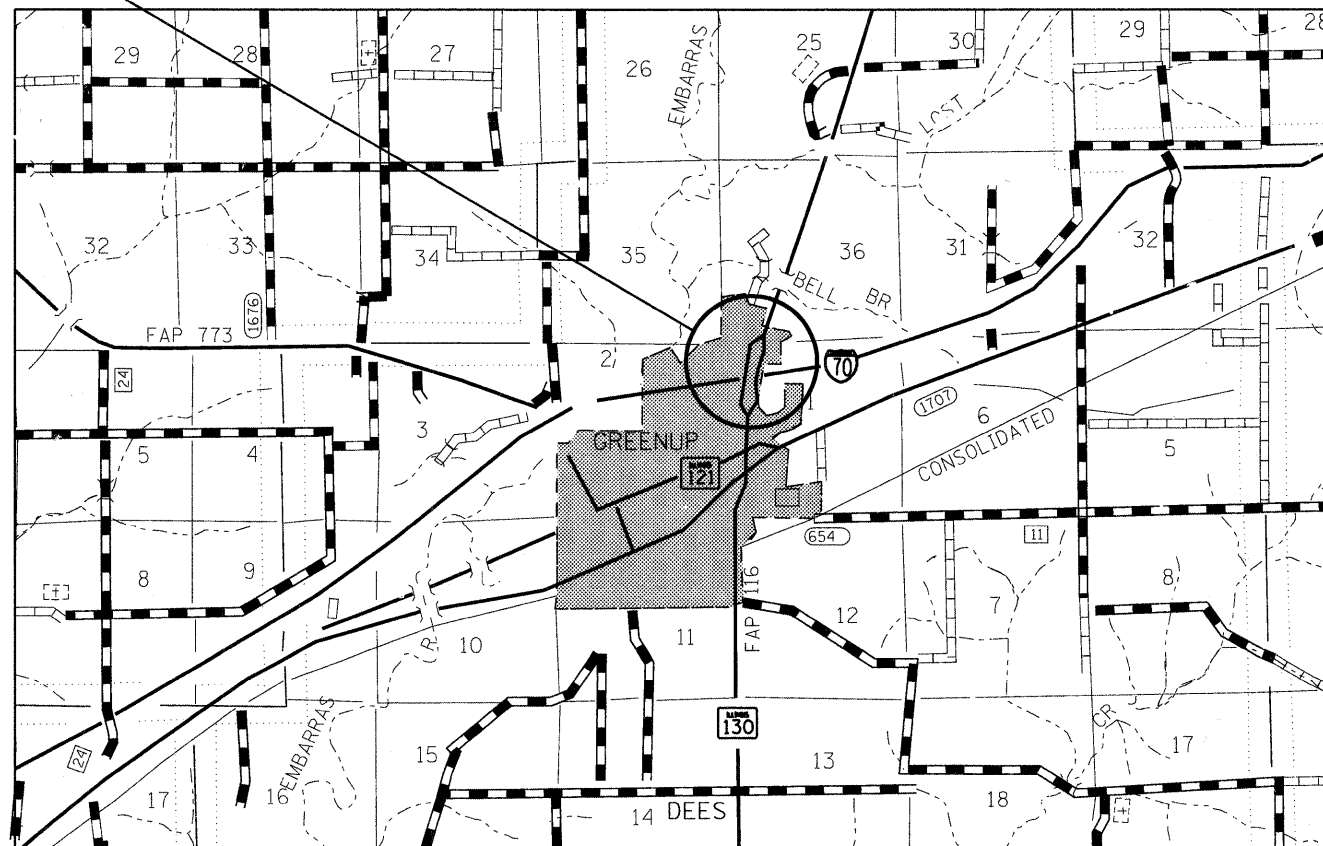
STRUCTURE NO. 018-0025
BEGINING STA. 842+54.50
FOUR SPAN STRUCTURE
W33X118 STEEL I BEAMS
WITH REINFORCED CONCRETE DECK
BK. TO BK. ABUTMENT = 238'-0"
SKEW = 14°-18'-07"
END STA. 857+52.50

C-97-001-09



FULL SIZE PLANS HAVE BEEN PREPARED USING STANDARD ENGINEERING SCALES. REDUCED SIZED PLANS WILL NOT CONFORM TO STANDARD SCALES. IN MAKING MEASUREMENTS ON REDUCED PLANS, THE ABOVE SCALES MAY BE USED.

J.U.L.I.E.
JOINT UTILITY LOCATION INFORMATION FOR EXCAVATION
1-800-892-0123
OR 811



GROSS LENGTH = 1498.0 FT. (0.3 MILES)
NET LENGTH = 1498.0 FT. (0.3 MILES)

PROJECT ENGINEER - KAREN BIERMAN
PROJECT MANAGER - MIKE ALLEN

CONTRACT NO. 74346

ADT (2007) = 4050

STATE OF ILLINOIS
DEPARTMENT OF TRANSPORTATION
DIVISION OF HIGHWAYS

SUBMITTED March 19 2010
Roger J. Driskoll
DEPUTY DIRECTOR OF HIGHWAYS, REGION ENGINEER

May 7 2010
Scott E. Stitt P.E.
Acting ENGINEER OF DESIGN AND ENVIRONMENT

May 7 2010
Christine M. Gooden
DIRECTOR OF HIGHWAYS, CHIEF ENGINEER

**PRINTED BY THE AUTHORITY
OF THE STATE OF ILLINOIS**