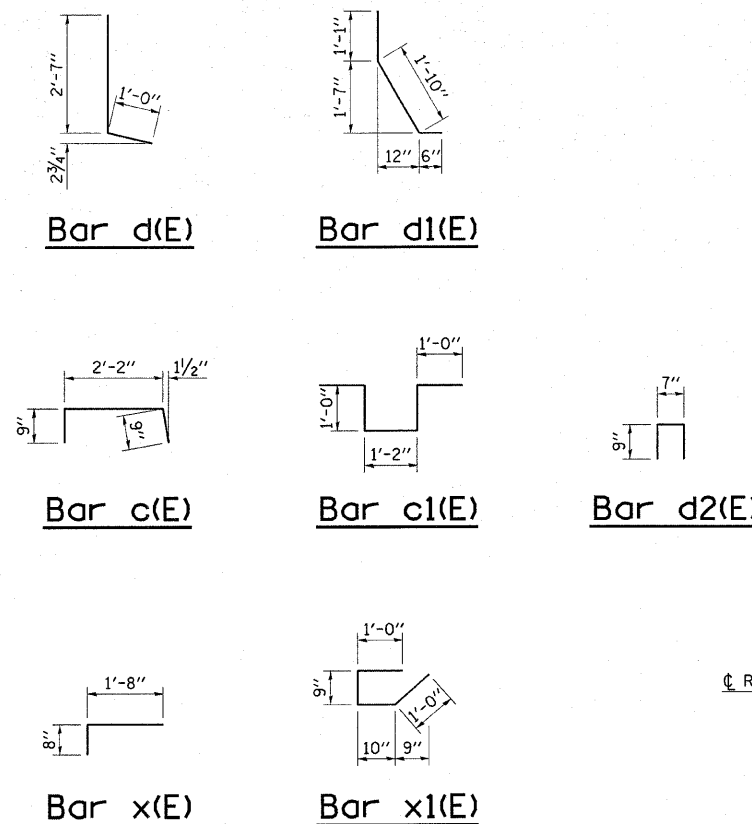


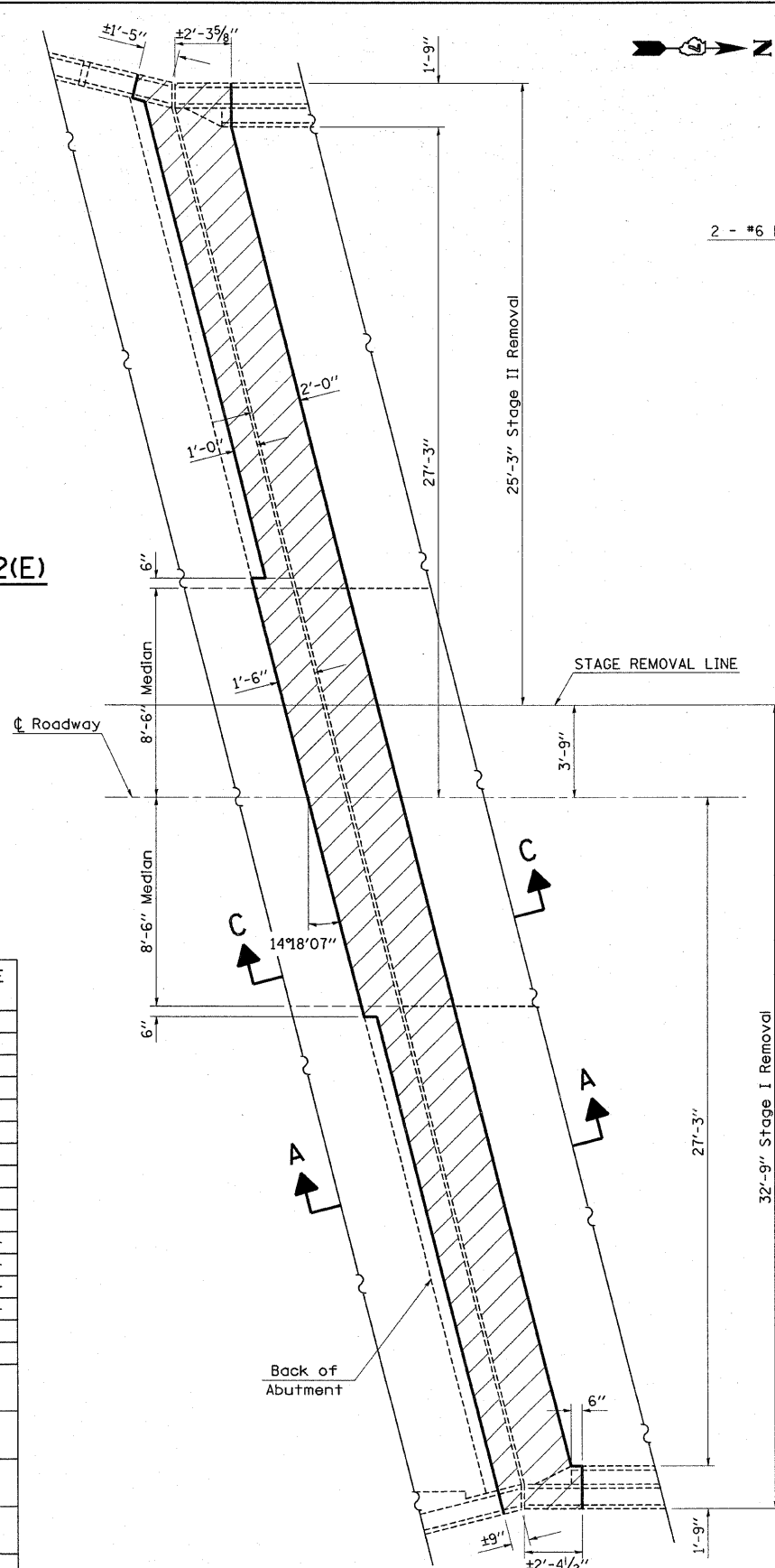
Note: Trim existing longitudinal reinforcement to accommodate the new joint opening. (Typ.)



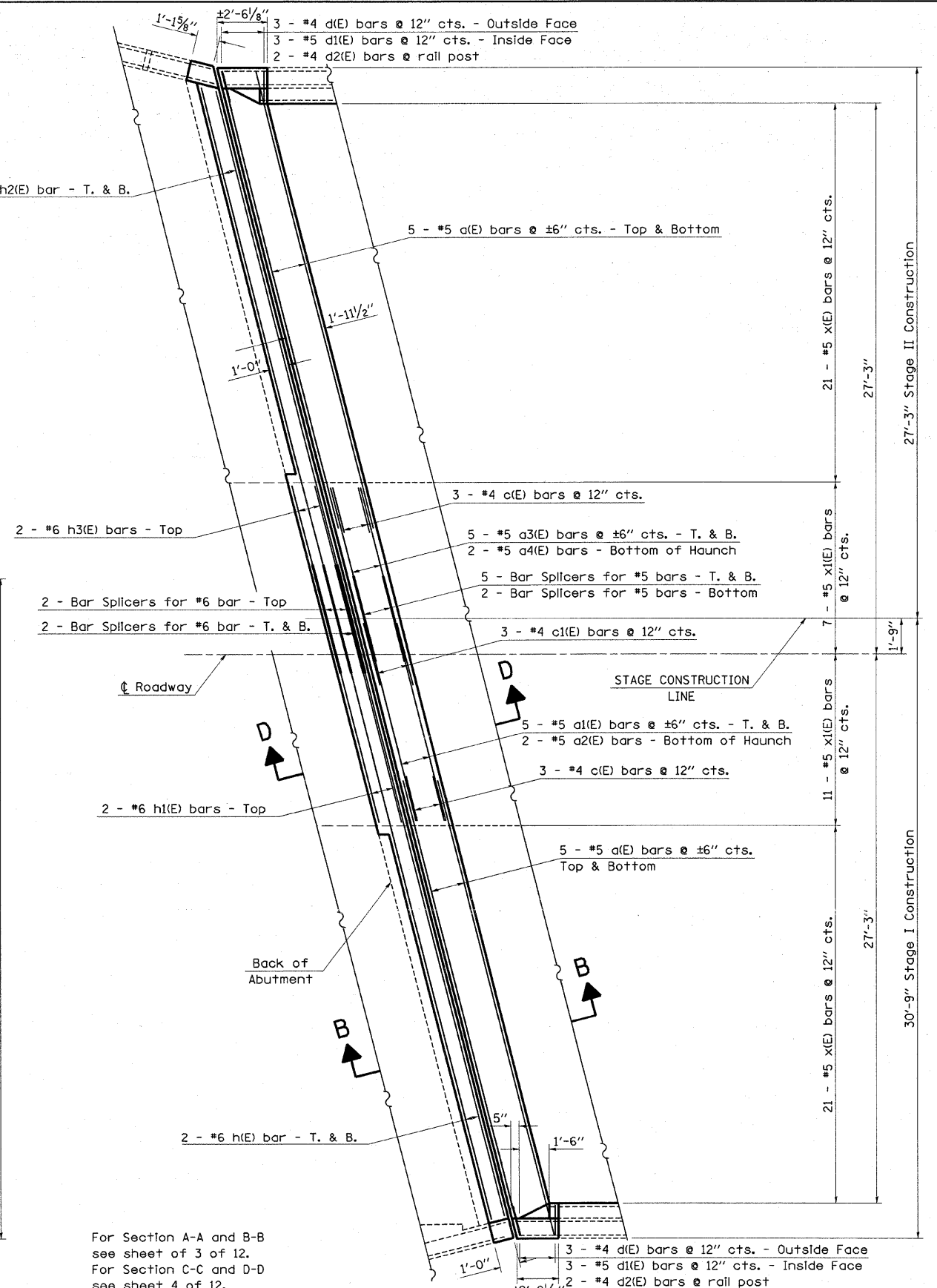
BILL OF MATERIAL

PER ABUTMENT

BAR	NUMBER OF BARS		TOTAL	SIZE	LENGTH	SHAPE
	STAGE I	STAGE II				
a (E)	10	10	20	#5	23' - 1"	—
a1(E)	10		10	#5	10' - 2"	—
a2(E)	2		2	#5	10' - 2"	—
a3(E)		10	10	#5	6' - 7"	—
a4(E)		2	2	#5	6' - 7"	—
d (E)	3	3	6	#4	3' - 7"	L
d1(E)	3	3	6	#5	3' - 5"	—
d2(E)	2	2	4	#4	1' - 4"	—
c (E)	3	3	6	#4	3' - 8"	—
c1(E)	3		3	#4	5' - 2"	—
h (E)	4		4	#6	30' - 9"	—
h1(E)	2		2	#6	10' - 2"	—
h2(E)		4	4	#6	26' - 9"	—
h3(E)		2	2	#6	6' - 7"	—
x (E)	21	21	42	#5	2' - 4"	—
x1(E)	11	7	18	#5	3' - 7"	—
REINFORCEMENT BARS (EPOXY COATED)				POUND	1330	
CONCRETE REMOVAL (SOUTH ABUTMENT)				CU YD	9.3	
CONCRETE REMOVAL (NORTH ABUTMENT)				CU YD	10.8	
CONCRETE SUPERSTRUCTURE (SOUTH ABUT.)				CU YD	10.5	
CONCRETE SUPERSTRUCTURE (NORTH ABUT.)				CU YD	12.0	



EXISTING PARTIAL PLAN
(South Abutment shown; North Abutment similar)



PROPOSED PARTIAL PLAN
(South Abutment shown; North Abutment similar)

For Section A-A and B-B see sheet of 3 of 12.
For Section C-C and D-D see sheet 4 of 12.