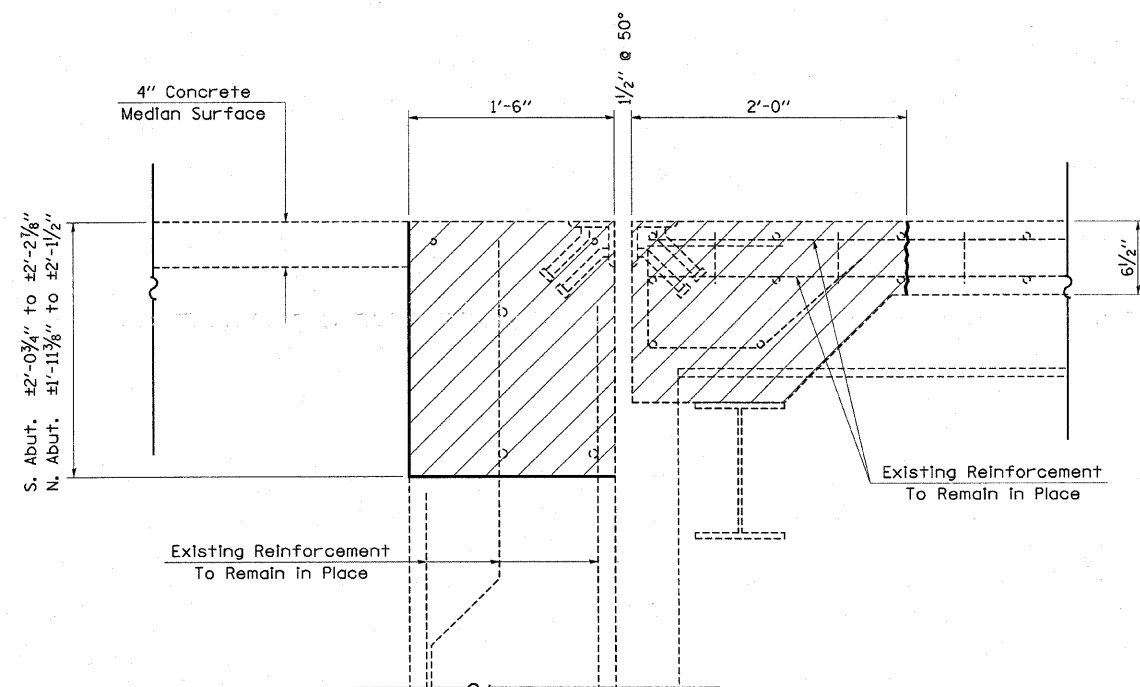
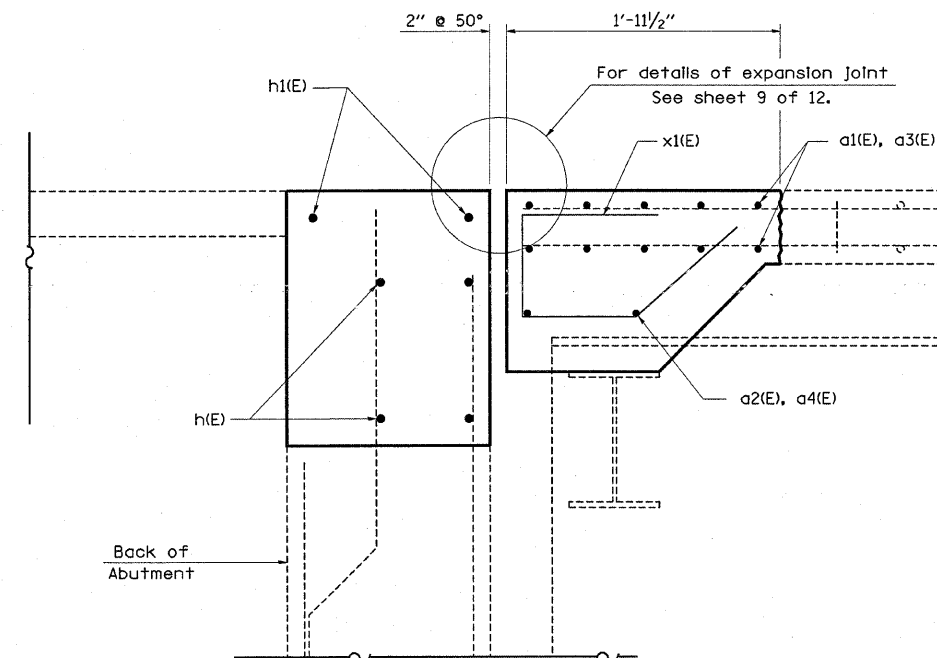


SECTION THRU MEDIAN
(Looking North)



SECTION C-C
(Dimensions at RT L's to end of deck)

○ Existing Reinforcement
● Proposed Reinforcement



SECTION D-D

Note: Dimensions are based on a Rolled Rail Strip Seal Joint.
If the Contractor elects to use the Welded Rail Strip Seal Joint, deck dimensions may require adjustments to satisfy the details on Base Sheet EJ-SSJ.

FILE NAME =	USER NAME = swartzw	DESIGNED -	REVISED -	STATE OF ILLINOIS DEPARTMENT OF TRANSPORTATION	EXPANSION JOINT REPLACEMENT DETAILS SN 018-0025			F.A.P. RTE.	SECTION	COUNTY	TOTAL SHEETS	SHEET NO.	
c:\pw_work\pw\dot\swartzw\dms53580\d77	346-aht-details.dgn	DRAWN -	REVISED -		SCALE:	SHEET NO. 4 OF 12 SHEETS	STA.	TO STA.	116	(18-47HB-1)BR	CUMBERLAND	28	15
	PLOT SCALE = 20.00000 ' / IN.	CHECKED -	REVISED -					CONTRACT NO. 74346					
	PLOT DATE = 3/19/2010	DATE -	REVISED -					ILLINOIS FED. AID PROJECT					