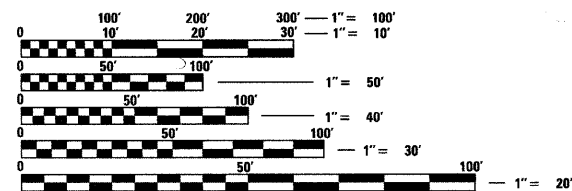


**INDEX OF SHEETS**

- 1 COVER SHEET
- 2 GENERAL NOTES, HIGHWAY STANDARDS, & COMMITMENTS
- 3 - 3A SUMMARY OF QUANTITIES
- 4 - 6 TYPICAL SECTIONS
- 7 - 11 SCHEDULE OF QUANTITIES
- 12 ALIGNMENT, TIES, AND BENCHMARKS
- 13 - 16 REMOVAL PLAN SHEETS
- 17 - 20 PLAN AND PROFILE SHEETS
- 21 - 42 TRAFFIC CONTROL PLAN (STAGE I, II, III & DETOUR PLANS)
- 43 - 46 EROSION AND SEDIMENT CONTROL SHEETS
- 47 - 50 PAVEMENT MARKING PLAN SHEETS
- 51 - 59 LIGHTING DETAILS
- 60 - 95 BRIDGE PLANS
- 96 - 110 SIGN STRUCTURES
- 111 - 112 DISTRICT DETAILS
- 113 - 114 MISCELLANEOUS DETAILS
- 115 - 149 CROSS SECTIONS

**PROJECT ENGINEER - TOM RONAN (217) 342-8320**



FULL SIZE PLANS HAVE BEEN PREPARED USING STANDARD ENGINEERING SCALES. REDUCED SIZED PLANS WILL NOT CONFORM TO STANDARD SCALES. IN MAKING MEASUREMENTS ON REDUCED PLANS, THE ABOVE SCALES MAY BE USED.

J.U.L.I.E.  
JOINT UTILITY LOCATION INFORMATION FOR EXCAVATION  
1-800-892-0123  
OR 811

**TOWNSHIP: HICKORY POINT  
CONTRACT NO. 74387**

	PRESENT (2007)	FUTURE (2031)
ADT	29,000	36,750
% SU	2.4%	2.4%
% MU	4.3%	4.3%

**GROSS LENGTH = 253.50' (0.048 MILES)**

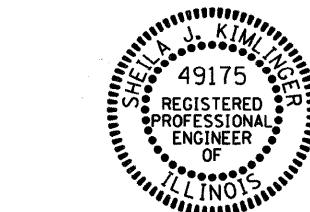
**NET LENGTH = 253.50' (0.048 MILES)**

DESIGN DESIGNATION - 3675 (31) PRINCIPAL ARTERIAL 9.94 (PCC-20)

**THOUVENOT,  
WADE &  
MOERCHEN, INC.**

SWANSEA • WATERLOO • EDWARDSVILLE • CARBONDALE • ST. CHARLES

CORPORATE OFFICE  
4940 Old Collinsville Road  
Swansea, Illinois 62226  
Tel: 618.624.4488  
Fax: 618.624.6888



*Sheila Kimlinger 3/15/10*  
SHEILA J. KIMLINGER, P.E. EXPIRATION DATE  
LICENSE NO. 062-049175 11-30-2011

STATE OF ILLINOIS  
DEPARTMENT OF TRANSPORTATION  
DIVISION OF HIGHWAYS

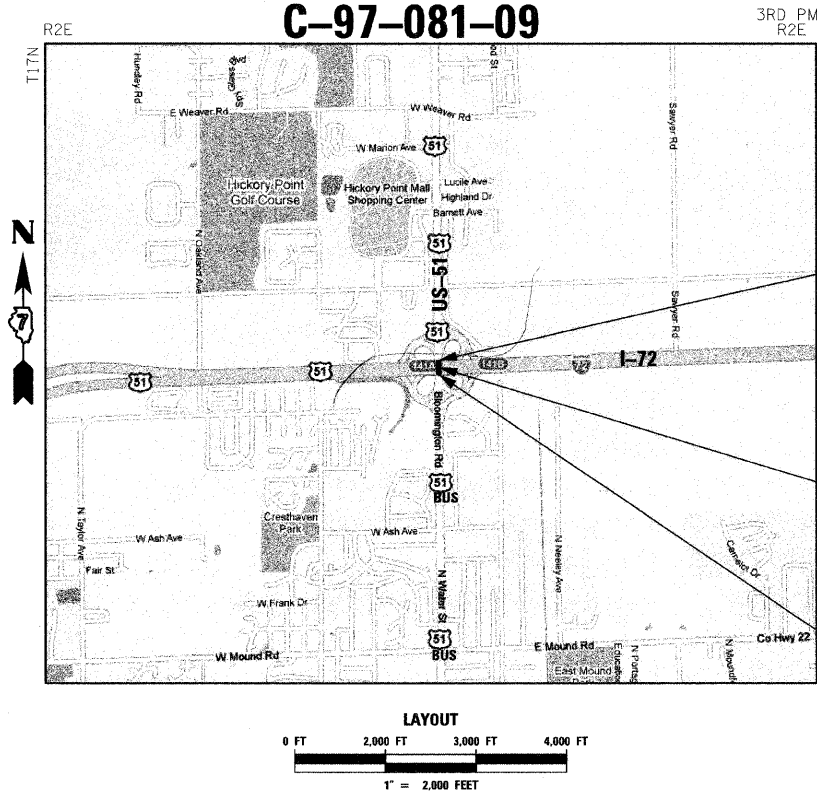
SUBMITTED March 19 2010  
*Roger D. Dinkel*  
DEPUTY DIRECTOR OF HIGHWAYS, REGION 4 ENGINEER

May 7 2010  
*Scott E. Stitt, P.E. / ea*  
ENGINEER OF DESIGN AND ENVIRONMENT

May 7 2010  
*Christine M. Reed / ea*  
DIRECTOR OF HIGHWAYS, CHIEF ENGINEER

**PRINTED BY THE AUTHORITY  
OF THE STATE OF ILLINOIS**

**STATE OF ILLINOIS**  
**DEPARTMENT OF TRANSPORTATION**  
**DIVISION OF HIGHWAYS**  
**PROPOSED**  
**HIGHWAY PLANS**  
F.A.P. ROUTE 322 (US 51)  
SECTION (58-64HB-1)B-1  
PROJECT: ACF-0322(091)  
**STRUCTURE REPLACEMENT**  
**MACON COUNTY**  
**C-97-081-09**



END PROJECT  
1156+04.53

PROP. SN 058-0136  
BRIDGE SECTION (58-64HB-1)B-1  
☪ STA. 1154+77.78  
253'-6" BACK TO BACK

BEGIN PROJECT  
1153+51.03

F.A.P. RTE.	SECTION	COUNTY	TOTAL SHEETS	SHEET NO.
322	(58-64HB-1)B-1	MACON	149*	1
FED. ROAD DIST. NO.	ILLINOIS	CONTRACT NO. 74387		

D-97-043-09

