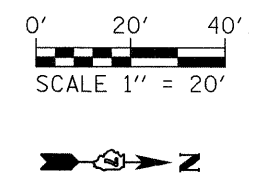


MATCHLINE STA. 1149+50.00

MATCHLINE STA. 1155+00.00



FILE NAME = F:\080276\US 51 over I-72\4-CADD\4.2-TR	USER NAME = jheger SHEETS\0774307-shr-rem-002.dgn	DESIGNED - MLS	REVISED -	<b>STATE OF ILLINOIS DEPARTMENT OF TRANSPORTATION</b>	<b>REMOVAL PLAN - US 51</b>			F.A.P. RTE. 322	SECTION (58-64HB-1)B-1	COUNTY MACON	TOTAL SHEETS 149	SHEET NO. 14	
PLOT SCALE = 20.0000' / in.		CHECKED - SJK	REVISED -		SCALE: 1:20	SHEET NO. 2 OF 4 SHEETS	STA. 1149+50 TO STA. 1155+00	US ROUTE 51		CONTRACT NO. 74387			
PLOT DATE = 3/15/2010		DATE -	REVISED -		FED. ROAD DIST. NO. 7 ILLINOIS FED. AID PROJECT								