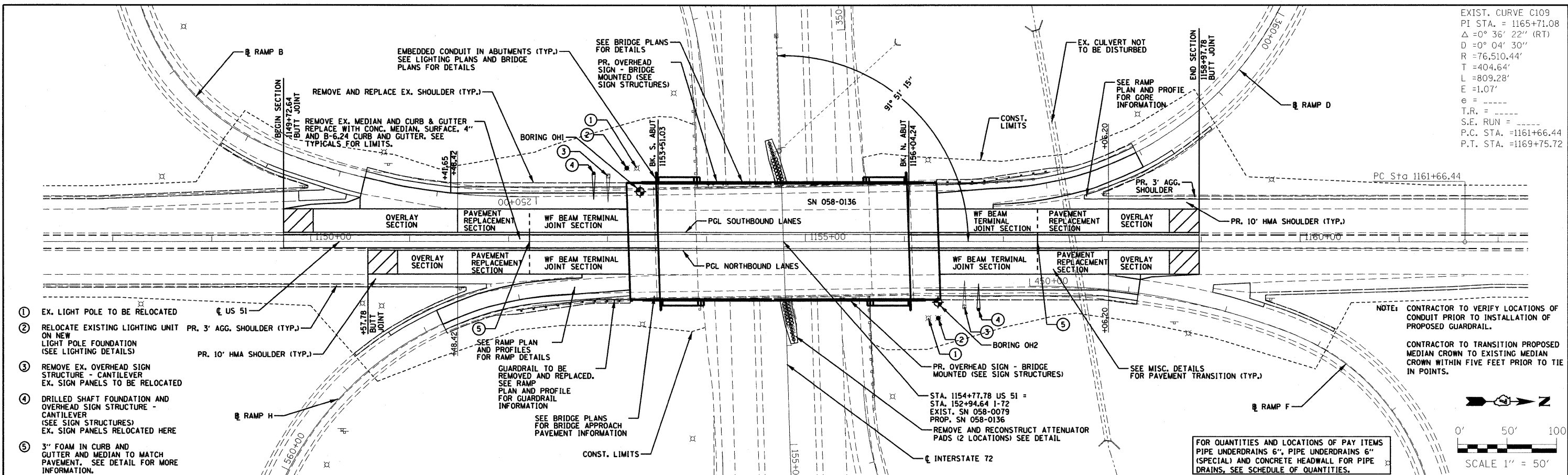


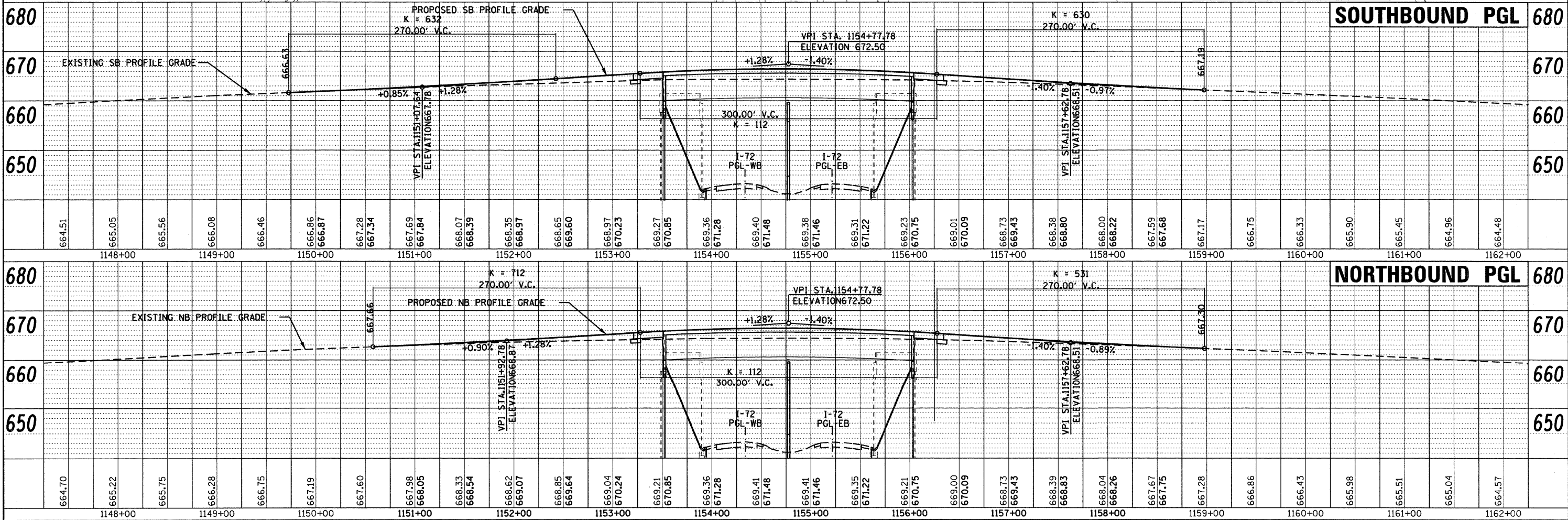
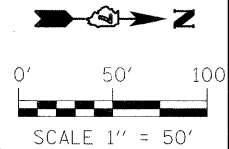
DATE	
BY	
SURVEYED	
PLOTTED	
GRADES CHECKED	
STRUCTURE NOTATIONS CHECKED	
NOTE BOOK NO.	
CADD FILE NAME	

DATE	
BY	
SURVEYED	
PLOTTED	
GRADES CHECKED	
STRUCTURE NOTATIONS CHECKED	
NOTE BOOK NO.	
CADD FILE NAME	



EXIST. CURVE C109
 PI STA. = 1165+71.08
 $\Delta = 0^\circ 36' 22''$ (RT)
 $D = 0^\circ 04' 30''$
 $R = 76,510.44'$
 $L = 809.28'$
 $e = 1.07'$
 $T.R. =$
 $S.E. RUN =$
 P.C. STA. = 1161+66.44
 P.T. STA. = 1169+75.72

FOR QUANTITIES AND LOCATIONS OF PAY ITEMS PIPE UNDERDRAINS 6", PIPE UNDERDRAINS 6" (SPECIAL) AND CONCRETE HEADWALL FOR PIPE DRAINS, SEE SCHEDULE OF QUANTITIES.



FILE NAME =	USER NAME = jheger	DESIGNED - MLS	REVISED -	F.A.P. RTE. 322	SECTION (58-64B-1)B-1	COUNTY MACON	TOTAL SHEETS 149	SHEET NO. 17
P:\000276\US 51 over 1-72\4-CADD\4.2-TRNSHETS\0774387-shr-plnpr-f-us-51.dgn		CHECKED - SJK	REVISED -	US ROUTE 51				CONTRACT NO. 74387
PLOT SCALE = 50.0000' / in.		DRAWN -	REVISED -	PLAN AND PROFILE - US 51				
PLOT DATE = 3/15/2010		CHECKED -	REVISED -	STATE OF ILLINOIS DEPARTMENT OF TRANSPORTATION				
				SCALE: 1:50				
				SHEET NO. 1 OF 4 SHEETS				
				STA. 1147+30 TO STA. 1162+30				
				FED. ROAD DIST. NO. 7 [ILLINOIS] FED. AID PROJECT				