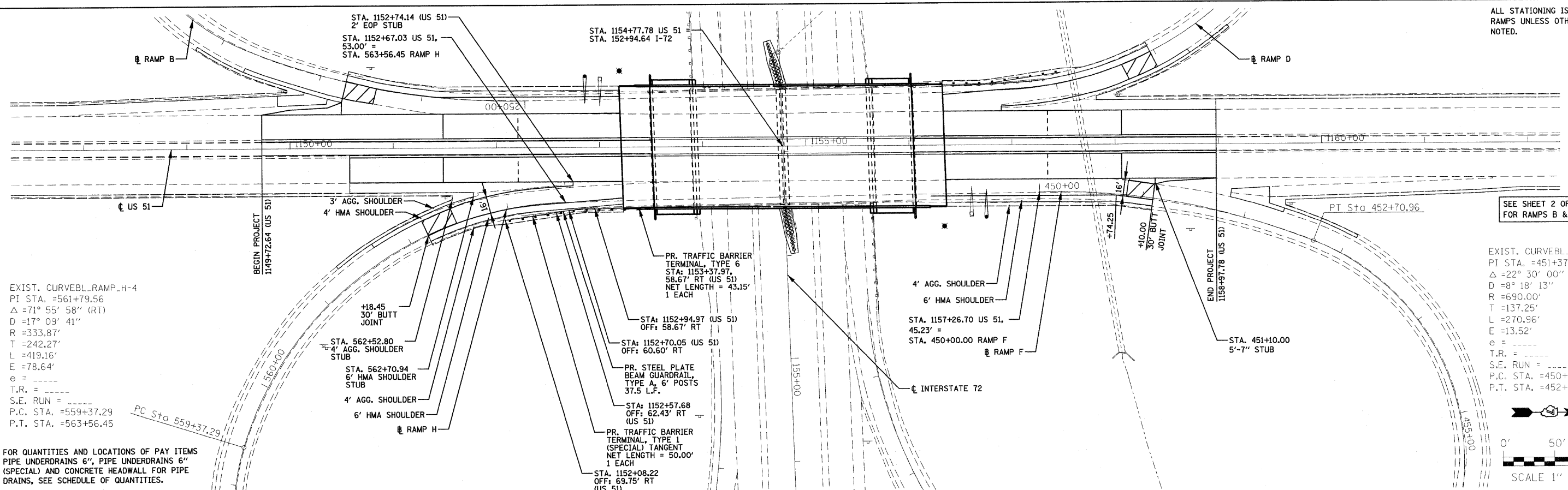


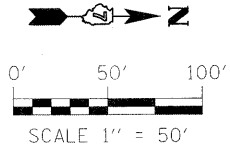
ALL STATIONING IS BASED ON RAMP UNLESS OTHERWISE NOTED.



SEE SHEET 2 OF 4 FOR RAMP B & D

EXIST. CURVEBL_RAMP_H-4
 PI STA. =561+79.56
 $\Delta = 71^\circ 55' 58''$ (RT)
 $D = 17^\circ 09' 41''$
 $R = 333.87'$
 $T = 242.27'$
 $L = 419.16'$
 $E = 78.64'$
 $e =$
 $T.R. =$
 $S.E. RUN =$
 $P.C. STA. = 559+37.29$
 $P.T. STA. = 563+56.45$

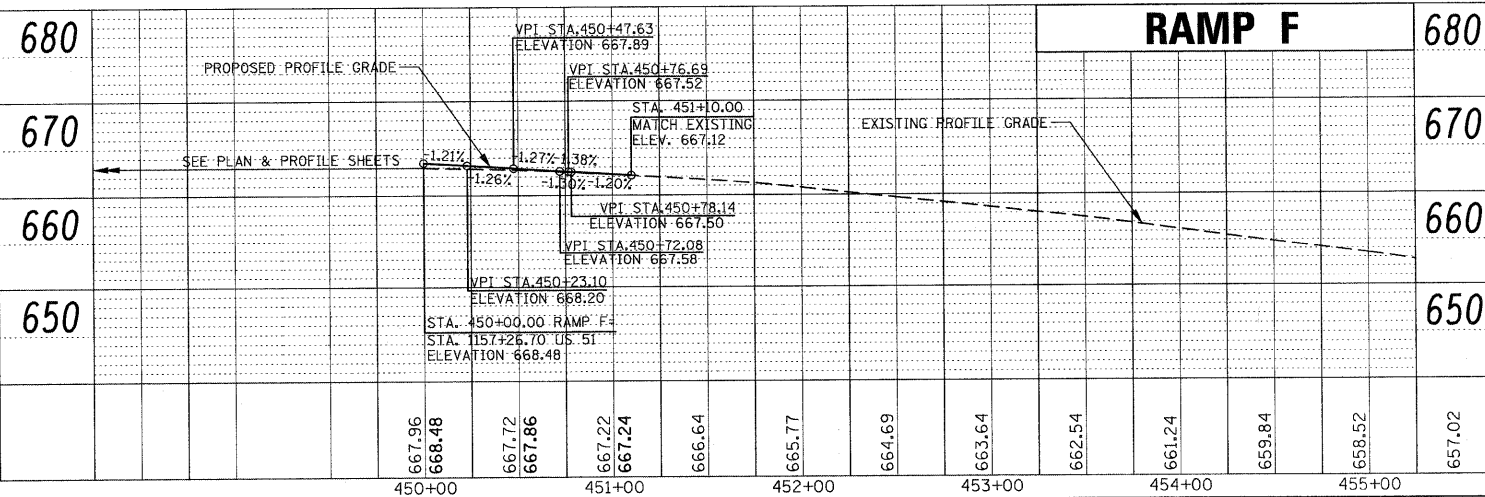
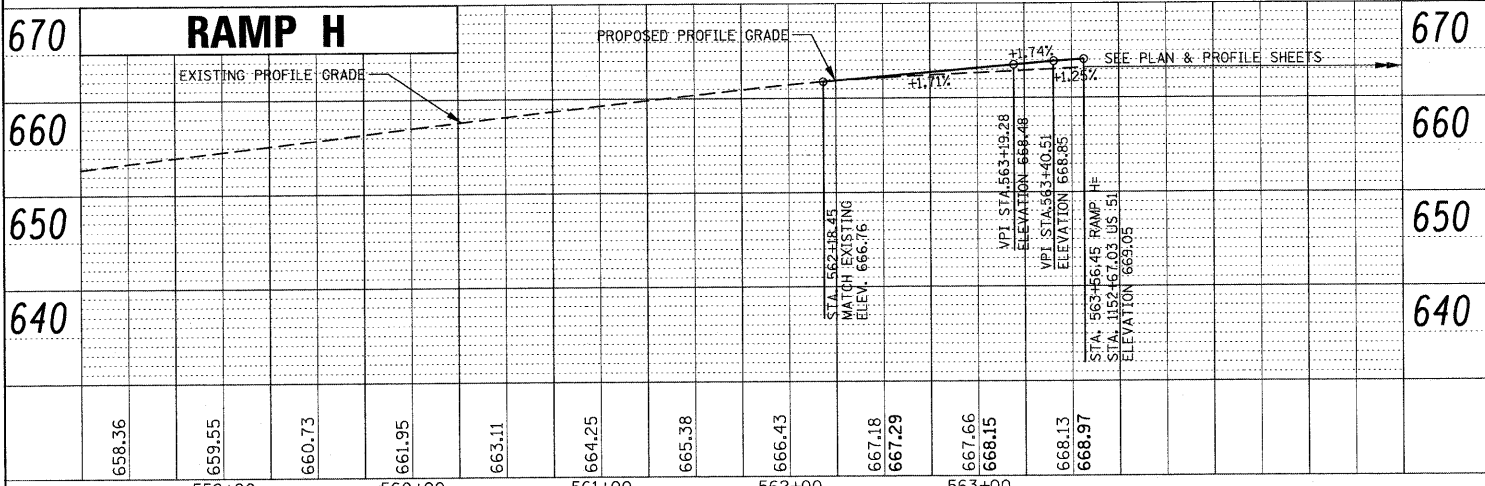
EXIST. CURVEBL_RAMP_F-1
 PI STA. =451+37.25
 $\Delta = 22^\circ 30' 00''$ (RT)
 $D = 8^\circ 18' 13''$
 $R = 690.00'$
 $T = 137.25'$
 $L = 270.96'$
 $E = 13.52'$
 $e =$
 $T.R. =$
 $S.E. RUN =$
 $P.C. STA. = 450+00.00$
 $P.T. STA. = 452+70.96$



FOR QUANTITIES AND LOCATIONS OF PAY ITEMS PIPE UNDERDRAINS 6", PIPE UNDERDRAINS 6" (SPECIAL) AND CONCRETE HEADWALL FOR PIPE DRAINS, SEE SCHEDULE OF QUANTITIES.

DATE	
BY	
STATIONED	
DESIGNED	
CHECKED	
DRAWN	
DATE	

DATE	
BY	
STATIONED	
DESIGNED	
CHECKED	
DRAWN	
DATE	



FILE NAME =	USER NAME = mjoost	DESIGNED - MLS	REVISED -
P:\080276\US 51 over I-72\4-CADD\4.2-TR\SETSD774387-shr-p\prf_RAMP_H&F.dgn	CHECKED - SJK	CHECKED - SJK	REVISED -
PLOT SCALE = 50.0000' / in.	DRAWN -	DRAWN -	REVISED -
PLOT DATE = 3/12/2010	CHECKED -	CHECKED -	REVISED -

STATE OF ILLINOIS
 DEPARTMENT OF TRANSPORTATION

PLAN AND PROFILE - RAMPS H & F

SCALE: 1:50 SHEET NO. 3 OF 4 SHEETS STA. TO STA.

F.A.P. RTE.	SECTION	COUNTY	TOTAL SHEETS	SHEET NO.
322	(58-64HB-1B-1	MACON	149	19
US ROUTE 51		CONTRACT NO. 74387		
FED. ROAD DIST. NO. 7 ILLINOIS FED. AID PROJECT				