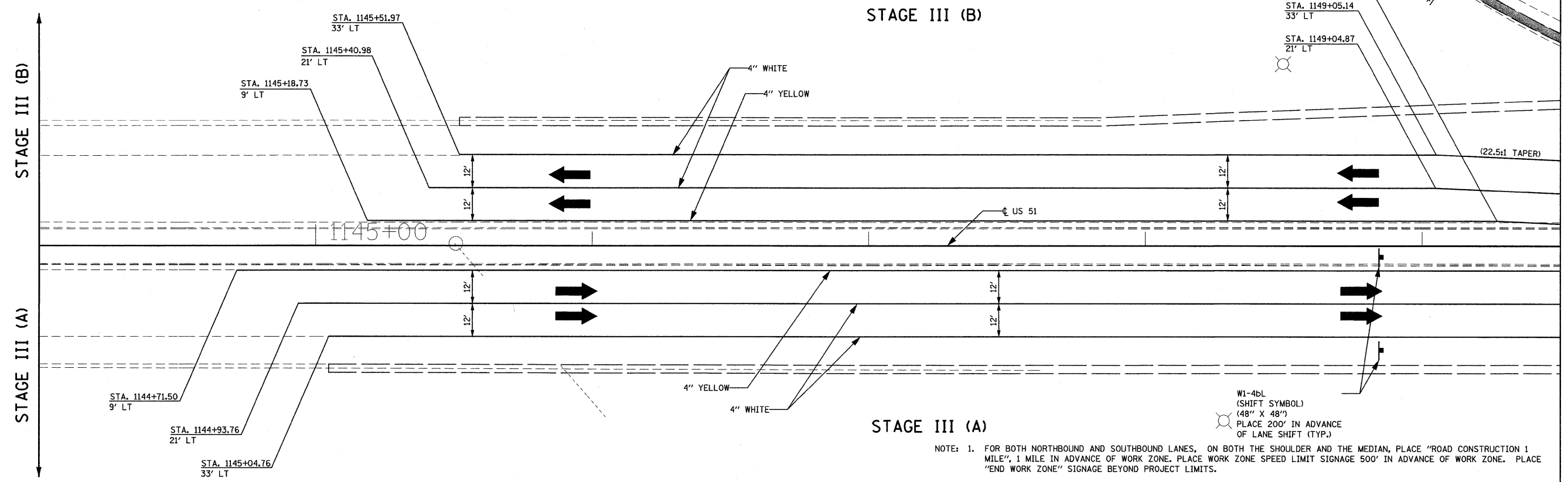


NOTE: REFERENCES TO YELLOW AND WHITE MEAN WET REFLECTIVE STAGING PAVEMENT MARKING TAPE TYPE III. REMOVE ALL EXISTING PAVEMENT MARKINGS AND RAISED REFLECTIVE PAVEMENT MARKERS OR RAISED REFLECTIVE PAVEMENT REFLECTORS IN CONFLICT WITH PROPOSED STAGING PAVEMENT MARKINGS PER ENGINEER. SEE SCHEDULES FOR LIMITS OF RRPV AND RRPV REFLECTOR REMOVAL.

WORK ZONE (HMA PAVEMENT OVERLAY)  
 STA. 252+76.45 (RAMP "B") TO  
 STA. 253+18.05 (RAMP "B")



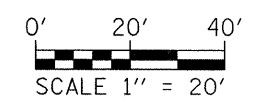
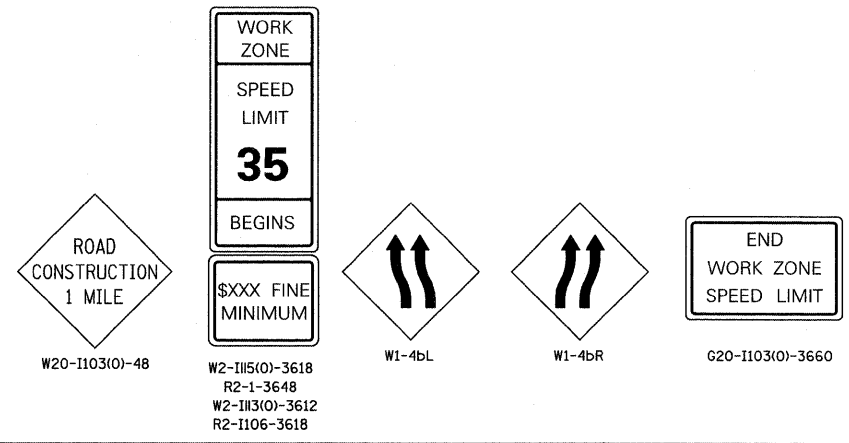
**STAGE III (A)**

- NOTE: 1. FOR BOTH NORTHBOUND AND SOUTHBOUND LANES, ON BOTH THE SHOULDER AND THE MEDIAN, PLACE "ROAD CONSTRUCTION 1 MILE", 1 MILE IN ADVANCE OF WORK ZONE. PLACE WORK ZONE SPEED LIMIT SIGNAGE 500' IN ADVANCE OF WORK ZONE. PLACE "END WORK ZONE" SIGNAGE BEYOND PROJECT LIMITS.
2. CONSTRUCT TEMPORARY RAMP IN US 51 MAINLINE PRIOR TO STAGE III (A).
3. SAW CUT EXCESS PORTLAND CEMENT CONCRETE PAVEMENT, 10" ALONG SHOULDER AND/OR GORE LINES AND REMOVE. SEE REMOVAL SHEETS AND CROSS SECTIONS FOR DETAILS. ALL LANE AND SHOULDER CLOSURES SHALL BE COORDINATED AND APPROVED THROUGH IDOT. THE CONTRACTOR SHALL BE RESPONSIBLE FOR COORDINATION.
4. ANY ADDITIONAL SIGNAGE REQUIRED FOR STAGE III (A & B) OF CONSTRUCTION THAT REQUIRE LANE OR SHOULDER CLOSURES OR DETOURS AND AS SHOWN ON PLANS SHALL BE INCLUDED IN THE LUMP SUM PAY ITEM OF TRAFFIC CONTROL AND PROTECTION - STAGE III.
5. SEE SPECIAL PROVISIONS FOR TIME FRAME OF RAMP CLOSURES.
6. DURING STAGE III (A) CONSTRUCTION, TRAFFIC ON OPPOSITE SIDE OF US 51 SHALL REMAIN PER STAGE II TRAFFIC CONTROL PLAN AND CORRESPONDING RAMPS ("B" AND "D") REMAINS OPEN TO TRAFFIC.
7. UPON COMPLETION OF STAGE III (A), OPEN RAMPS "H" AND "F" AND PLACE TRAFFIC CONTROL PER STAGE III (B). COMPLETE WORK AS INDICATED FOR STAGE III (B). SEE STAGE III (C) FOR PAYMENT MARKING FOR STAGE III (A) AFTER COMPLETION OF CONSTRUCTION.
8. STANDARD 701451 SHALL BE USED ON LOOP RAMPS FOR TRAFFIC CONTROL. SEE SHEETS 15 AND 16 FOR RAMP CLOSURE DETOURS. COST INCLUDED IN COST OF TRAFFIC CONTROL AND PROTECTION - STAGE III.
9. TRAFFIC CONTROL SIGNS SHALL BE PLACED ON BOTH LEFT AND RIGHT SIDE OF PAVEMENT.
10. ALL BARRIER WALL MARKERS SHALL BE PLACED PER LINEAR DELINEATION PANELS SPECIFICATIONS UNLESS OTHERWISE SPECIFIED BY THE ENGINEER. SEE STANDARD 704001.
11. ALL TRAFFIC CONTROL DEVICES SHALL BE IN ACCORDANCE WITH STANDARD 701901.
12. CONTRACTOR TO MATCH PROPOSED PAVEMENT MARKING INTO EXISTING PAVEMENT MARKING AT EACH CORRESPONDING BEGINNING AND ENDING LOCATIONS.

W1-4bL  
 (SHIFT SYMBOL)  
 (48" X 48")  
 PLACE 200' IN ADVANCE  
 OF LANE SHIFT (TYP.)

**STAGE III (A&B) REFERENCED TRAFFIC CONTROL STANDARDS**  
 701421-USE FOR TEMPORARY LANE CLOSURES - DAY ONLY  
 701451-USE FOR ENTRANCE/EXIT RAMP CLOSURE  
 701901-USE FOR TRAFFIC CONTROL DEVICES  
 704001-USE FOR TEMPORARY CONCRETE BARRIER  
 720001 & 720006-USE FOR PROPOSED CONSTRUCTION SIGNS  
 780001-USE FOR STAGING PAVEMENT MARKING

NOTE: THESE REFERENCED STANDARDS SHALL NOT BE PAID FOR SEPARATELY, BUT SHALL BE INCLUDED IN THE LUMP SUM COST OF TRAFFIC CONTROL AND PROTECTION - STAGE III.



FILE NAME = P:\080276\US 51 over 1-72\4-CADD\4.2-TR	USER NAME = jheger	DESIGNED - MLS	REVISED -	<b>STATE OF ILLINOIS DEPARTMENT OF TRANSPORTATION</b>	<b>TRAFFIC CONTROL PLAN - STAGE III (A &amp; B)</b>	F.A.P. RTE. 322	SECTION (58-64HB-1)B-1	COUNTY MACON	TOTAL SHEETS 149	SHEET NO. 31		
PLOT SCALE = 20,0000' / 1in.	CHECKED - SJK	REVISED -	SCALE: 1:20			SHEET NO. 11 OF 22 SHEETS	STA. 1144+00 TO STA. 1149+50	US ROUTE 51 CONTRACT NO. 74387				
PLOT DATE = 3/15/2010	DATE -	REVISED -	FED. ROAD DIST. NO. 7 ILLINOIS FED. AID PROJECT									