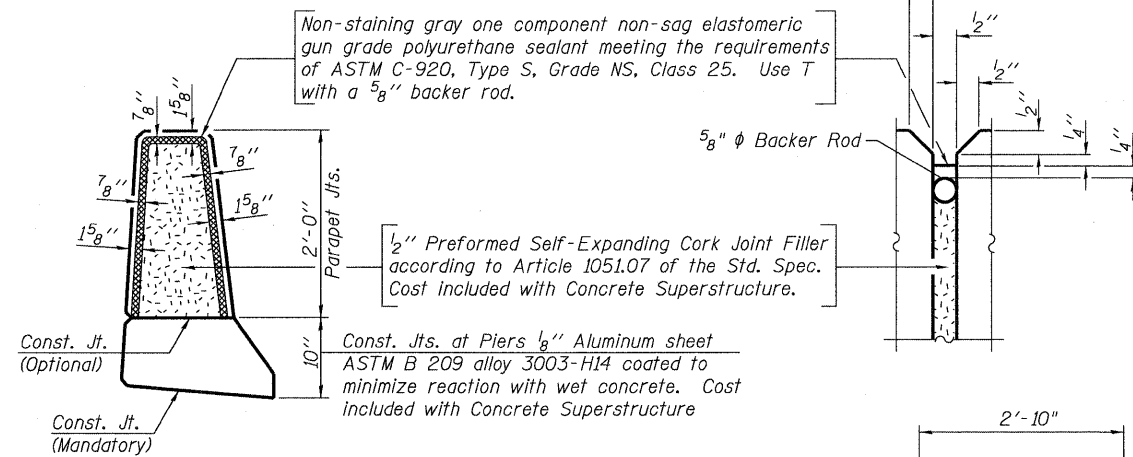


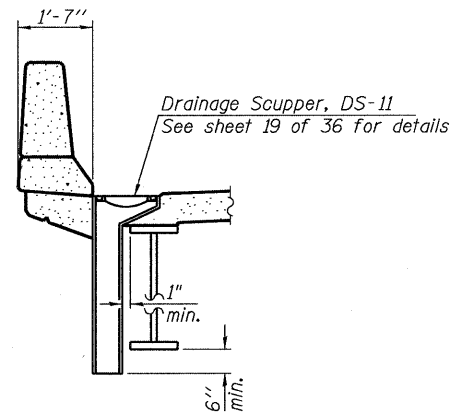
**INSIDE ELEVATION OF PARAPET**

**MINIMUM BAR LAP**

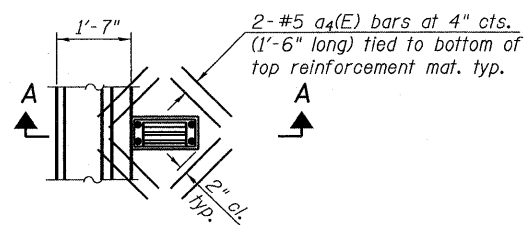
(Parapet)  
 #4 bar = 1'-4"  
 #8 bar = 3'-5"



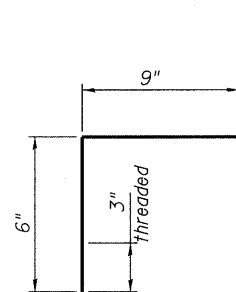
**PARAPET JOINT DETAILS**



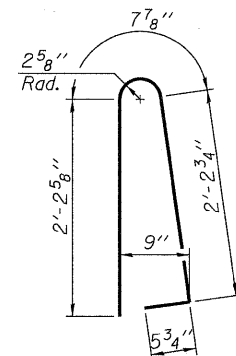
**SECTION A-A**  
 outside parapet shown



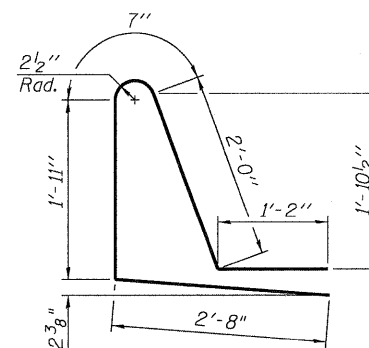
**PLAN AT SCUPPER LOCATIONS**  
 Cut longitudinal reinforcement to clear drainage scuppers.



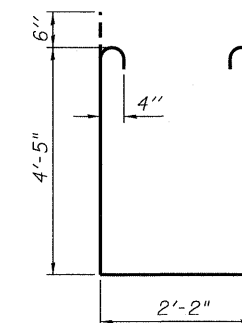
**BAR c1(E)**



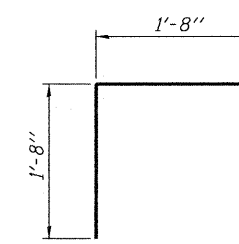
**BAR d(E)**



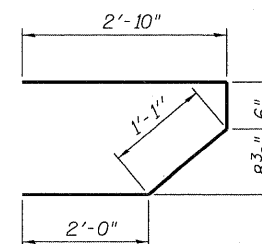
**BAR d1(E)**



**BAR s1(E)**



**BAR v(E)**



**BAR s(E)**

**SUPERSTRUCTURE  
 BILL OF MATERIAL**

Bar	No.	Size	Length	Shape
a(E)	1104	#5	26'-11"	—
a1(E)	674	#5	26'-7"	—
a2(E)	1106	#6	6'-0"	—
a3(E)	1104	#5	33'-1"	—
a4(E)	32	#5	1'-6"	—
a5(E)	8	#5	33'-2"	—
a6(E)	8	#5	26'-8"	—
a11(E)	1011	#5	22'-7"	—
b(E)	1088	#5	33'-2"	—
b1(E)	357	#6	30'-0"	—
b2(E)	999	#5	29'-8"	—
c(E)	254	#5	13'-4"	—
c1(E)	508	#5	1'-3"	┌
d(E)	554	#5	5'-7"	└
d1(E)	554	#5	8'-4"	└
e(E)	168	#4	17'-5"	—
e1(E)	32	#4	19'-8"	—
e2(E)	16	#8	29'-3"	—
e3(E)	4	#8	19'-8"	—
e4(E)	16	#4	27'-8"	—
m(E)	20	#6	27'-1"	—
m1(E)	8	#6	6'-9"	—
m2(E)	48	#6	10'-5"	—
m3(E)	26	#6	7'-0"	—
m4(E)	4	#6	3'-3"	—
m5(E)	4	#6	5'-5"	—
m6(E)	8	#6	10'-10"	—
m7(E)	30	#6	23'-4"	—
s(E)	222	#5	6'-5"	└
s1(E)	192	#4	12'-0"	└
v(E)	240	#5	3'-4"	┌
Reinforcement Bars, Epoxy Coated		Pound	230,120	
Concrete Superstructure		Cu. Yds.	987.4	
Bar Splicers		Each	2052	

Bars indicated thus 1 x 4-#8 etc. indicates 1 line of bars with 4 lengths per line.

**SUPERSTRUCTURE DETAILS  
 STRUCTURE NO. 058-0136**

<b>Coombe-Bloxdorf P.C.</b> - CIVIL ENGINEERS - - STRUCTURAL ENGINEERS - - LAND SURVEYORS - Design Firm License No. 184-002703	PROJECT NO. 08052-6 SCALE DATE 1/18/10 DESIGN BY MCB DRAWN BY TFG CHECKED BY MCB	SHEET NO. 17 36 SHEETS	F.A.P. RTE. 322 SECTION (58-64HB-1)B-1 COUNTY MACON TOTAL SHEETS 149 SHEET NO. 76	CONTRACT NO. 74387 FED. ROAD DIST. NO. 7 ILLINOIS FED. AID PROJECT
--	---	---------------------------	---	---