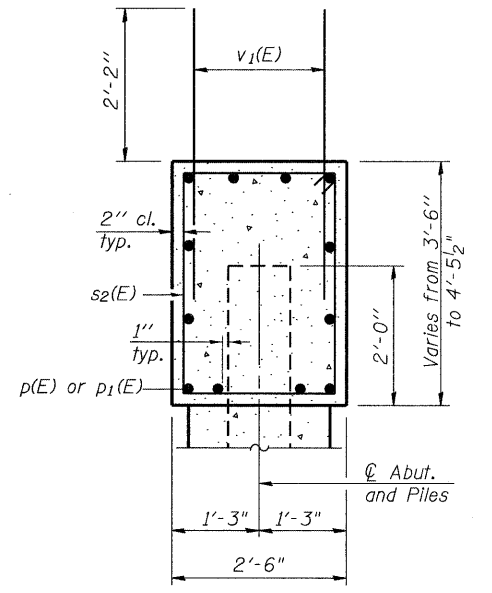
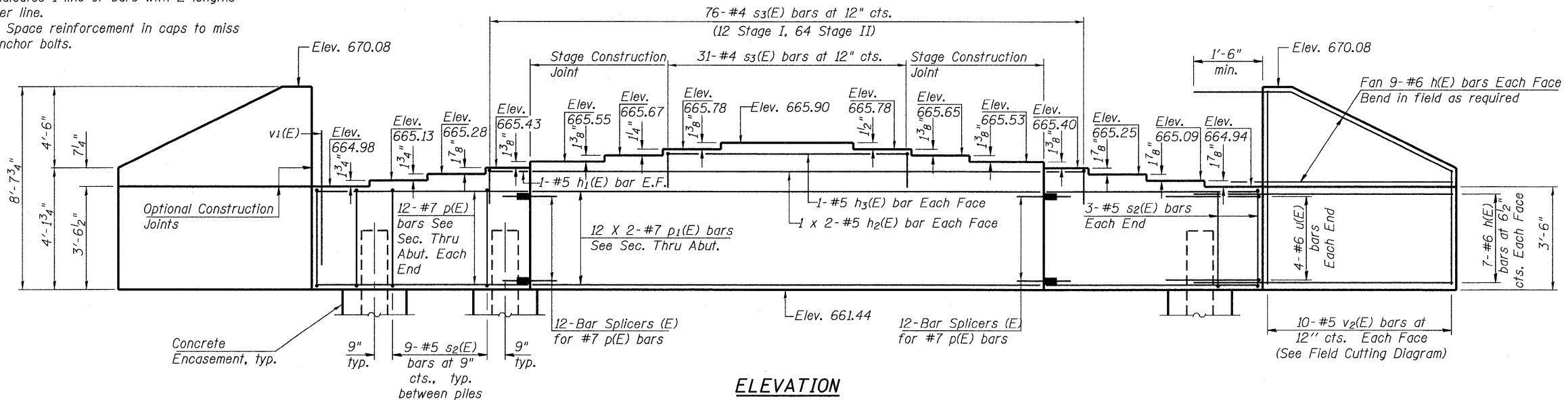
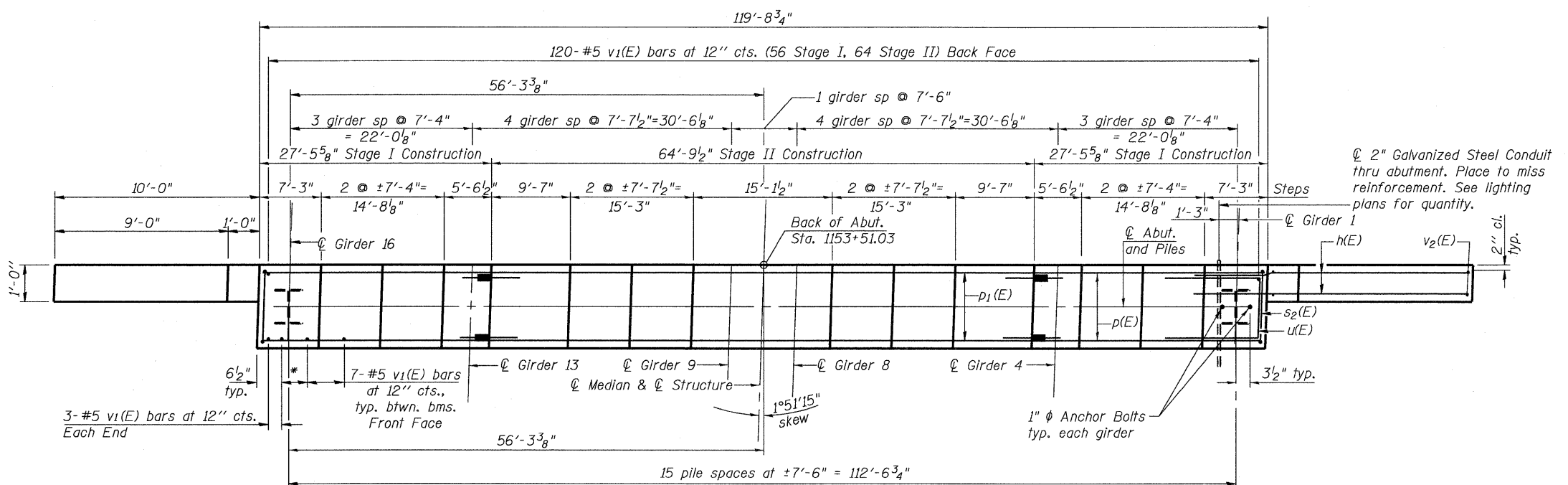


Notes:
 Pour steps monolithically with cap.
 Bars indicated thus 1 x 2-#4 etc.
 indicates 1 line of bars with 2 lengths
 per line.
 Space reinforcement in caps to miss
 anchor bolts.



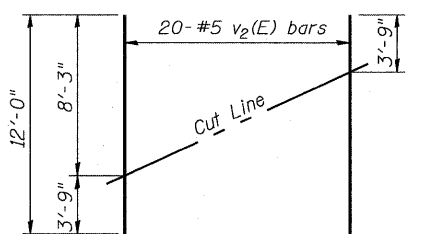
SEC. THRU ABUT.



PLAN

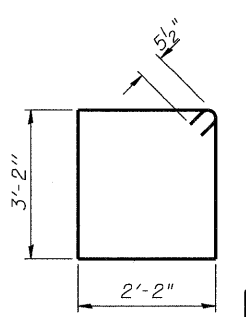
MINIMUM BAR LAP

#5 Bar = 2'-11"
 #7 Bar = 4'-8"

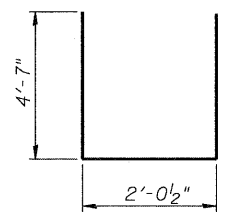


FIELD CUTTING DIAGRAM

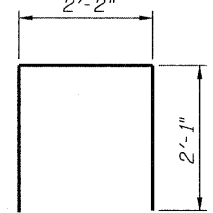
Order v2(E) full length. Cut as shown and use remainder of bars in opposite face.



BAR s2(E)



BAR u(E)



BAR s3(E)

BILL OF MATERIAL

Bar	No.	Size	Length	Shape
h(E)	64	#6	11'-4"	—
h1(E)	4	#5	5'-2"	—
h2(E)	4	#5	34'-0"	—
h3(E)	2	#5	30'-0"	—
p(E)	24	#7	27'-1"	—
p1(E)	24	#7	34'-7"	—
s2(E)	141	#5	11'-7"	□
s3(E)	107	#4	6'-4"	□
u(E)	8	#6	11'-3"	□
v1(E)	231	#5	4'-4"	—
v2(E)	20	#5	12'-0"	—
Structure Excavation		Cu. Yd.	322	
Concrete Structures		Cu. Yd.	48.9	
Reinforcement Bars, Epoxy Coated		Pound	7930	
Furnishing Steel Piles, HP 12x63		Foot	675	
Driving Piles		Foot	675	
Test Pile, HP 12x63		Each	1	
Concrete Encasement		Cu. Yd.	5.6	
Bar Splicers		Each	24	

For details of Bar Splicers, see sheet 30 of 36.
 For details of piles and Concrete Encasement, see sheet 29 of 36.

PILE DATA

Type: HP 12x63
 Nominal Required Bearing: 452
 Factored Resistance Available: 226
 Est. Length: 45'
 No. Production Piles: 15
 No. Test Piles: 1

SOUTH ABUTMENT
 STRUCTURE NO. 058-0136

Coombe-Bloxdorf P.C.
 - CIVIL ENGINEERS -
 - STRUCTURAL ENGINEERS -
 - LAND SURVEYORS -
 Design Firm License No. 184-002703

PROJECT NO. 08052-6
 SCALE
 DATE 01/15/10
 DESIGN BY BD
 DRAWN BY TFG
 CHECKED BY MCB

SHEET NO. 25
 36 SHEETS

F.A.P. RTE. 322
 SECTION (58-64HB-1)B-1
 COUNTY MACON
 TOTAL SHEETS 149
 SHEET NO. 84
 CONTRACT NO. 74387
 FED. ROAD DIST. NO. 7 ILLINOIS FED. AID PROJECT