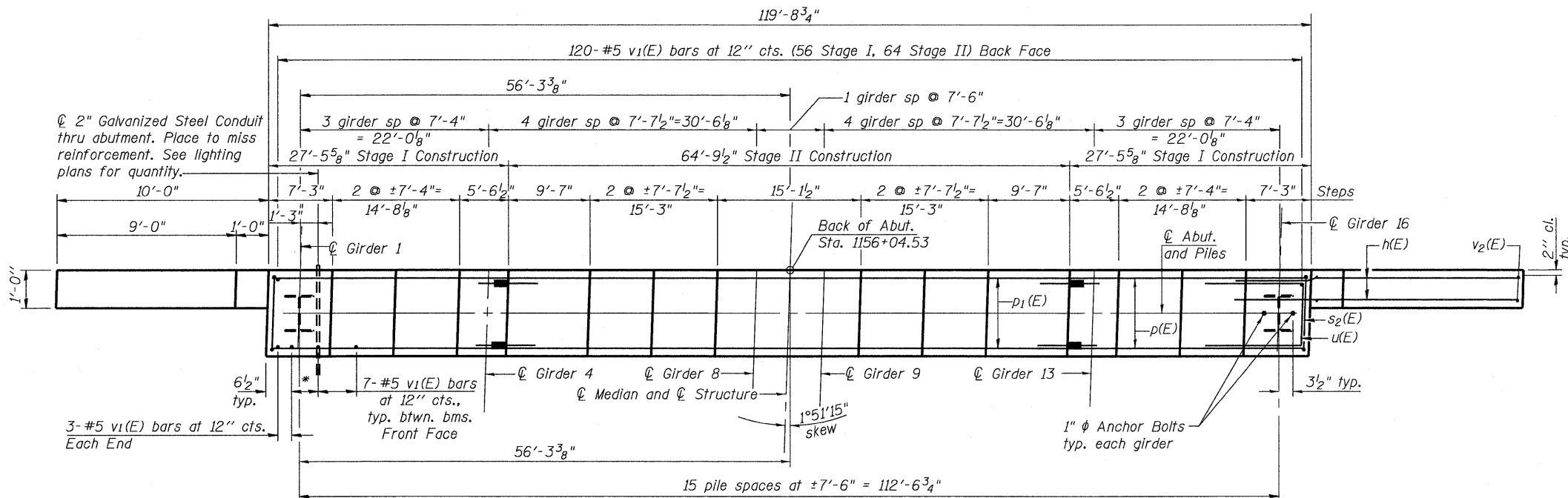
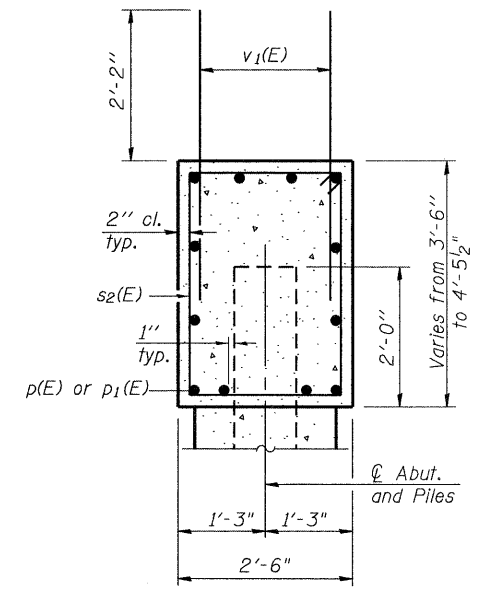
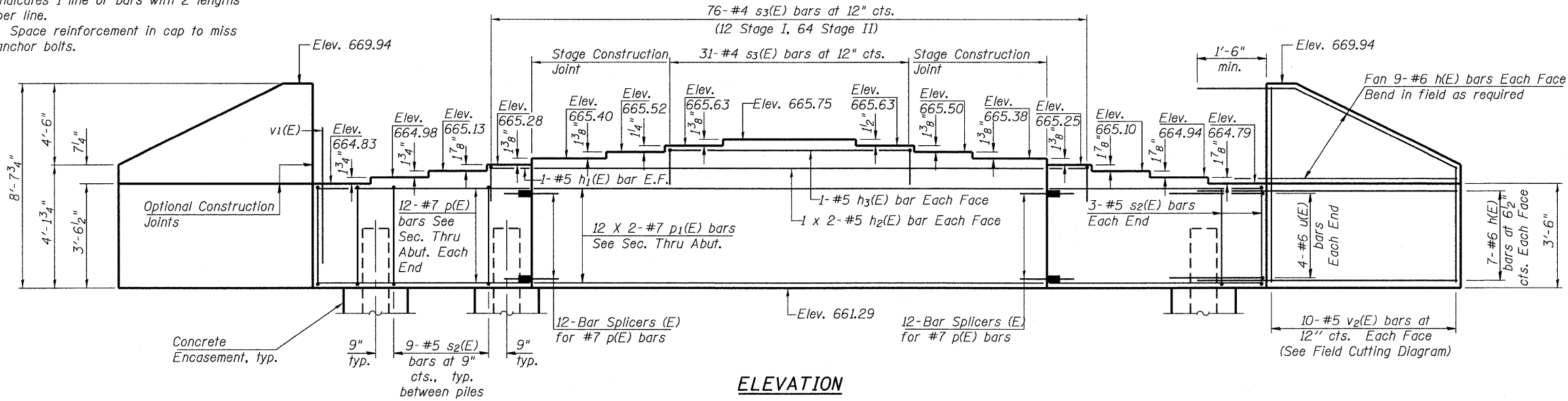


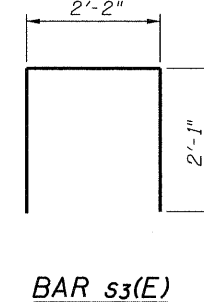
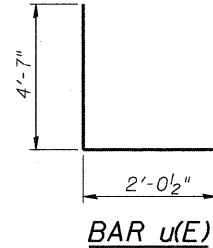
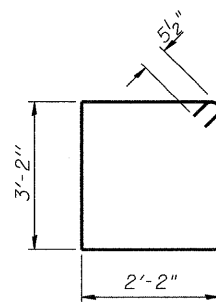
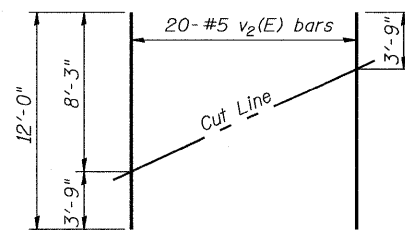
Notes:  
 Pour steps monolithically with cap.  
 Bars indicated thus 1 x 2-#4 etc.  
 indicates 1 line of bars with 2 lengths  
 per line.  
 Space reinforcement in cap to miss  
 anchor bolts.



\* 1'-8 1/2" at girders 1 & 16  
 1'-4" at girders 2, 3, 14 & 15  
 1'-5 3/4" at girders 4 & 13  
 1'-7 1/2" at girders 5 thru 7 & 10 thru 12  
 1'-6 3/4" at girders 8 & 9

**PILE DATA**

Type: HP 12x63  
 Nominal Required Bearing: 450  
 Factored Resistance Available: 225  
 Est. Length: 40'  
 No. Production Piles: 15  
 No. Test Piles: 1



**MINIMUM BAR LAP**

#5 Bar = 2'-11"  
 #7 Bar = 4'-8"

**BILL OF MATERIAL**

Bar	No.	Size	Length	Shape
h(E)	64	#6	11'-4"	—
h <sub>1</sub> (E)	4	#5	5'-2"	—
h <sub>2</sub> (E)	4	#5	34'-1"	—
h <sub>3</sub> (E)	2	#5	30'-0"	—
p(E)	24	#7	27'-1"	—
p <sub>1</sub> (E)	24	#7	34'-7"	—
s <sub>2</sub> (E)	141	#5	11'-7"	□
s <sub>3</sub> (E)	107	#4	6'-4"	□
u(E)	8	#6	11'-3"	□
v <sub>1</sub> (E)	231	#5	4'-4"	—
v <sub>2</sub> (E)	20	#5	12'-0"	—
Structure Excavation		Cu. Yd.	322	
Concrete Structures		Cu. Yd.	48.9	
Reinforcement Bars, Epoxy Coated		Pound	7930	
Furnishing Steel Piles, HP 12x63		Foot	600	
Driving Piles		Foot	600	
Test Pile, HP 12x63		Each	1	
Concrete Encasement		Cu. Yd.	5.6	
Bar Splicers		Each	24	

For details of Bar Splicers, see sheet 30 of 36.  
 For details of piles and Concrete Encasement, see sheet 29 of 36.

**NORTH ABUTMENT  
 STRUCTURE NO. 058-0136**

<b>CB</b> Coombe-Bloxdorf P.C. -CIVIL ENGINEERS- -STRUCTURAL ENGINEERS- -LAND SURVEYORS- Design Firm License No. 184-002703	PROJECT NO. 08052-6 SCALE DATE 1/17/10 DESIGN BY BD DRAWN BY TFG CHECKED BY MCB	SHEET NO. 26 36 SHEETS	F.A.P. RTE. 322	SECTION (58-64HB-1)B-1	COUNTY MACON	TOTAL SHEETS 149	SHEET NO. 85
	FEDERAL ROAD DIST. NO. 7 ILLINOIS FED. AID PROJECT		CONTRACT NO. 74387				