

F.A.P. RTE.	SECTION	COUNTY	TOTAL SHEETS	SHEET NO.
762	(1,2)RS-3	Moultrie	21	1
ILLINOIS CONTRACT NO.			74413	

STATE OF ILLINOIS  
DEPARTMENT OF TRANSPORTATION  
DIVISION OF HIGHWAYS

**PROPOSED  
HIGHWAY PLANS**

FAP ROUTE 762 (ILL 32)  
SECTION (1,2)RS-3  
PROJECT — —  
HMA RESURFACING/BOX CULVERT REPLACEMENT  
MOULTRIE COUNTY

C-97-127-09

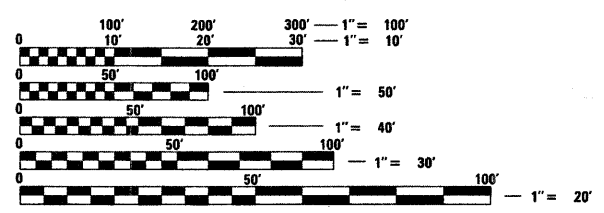
FOR INDEX OF SHEETS, SEE SHEET NO. 2

D97-071-09



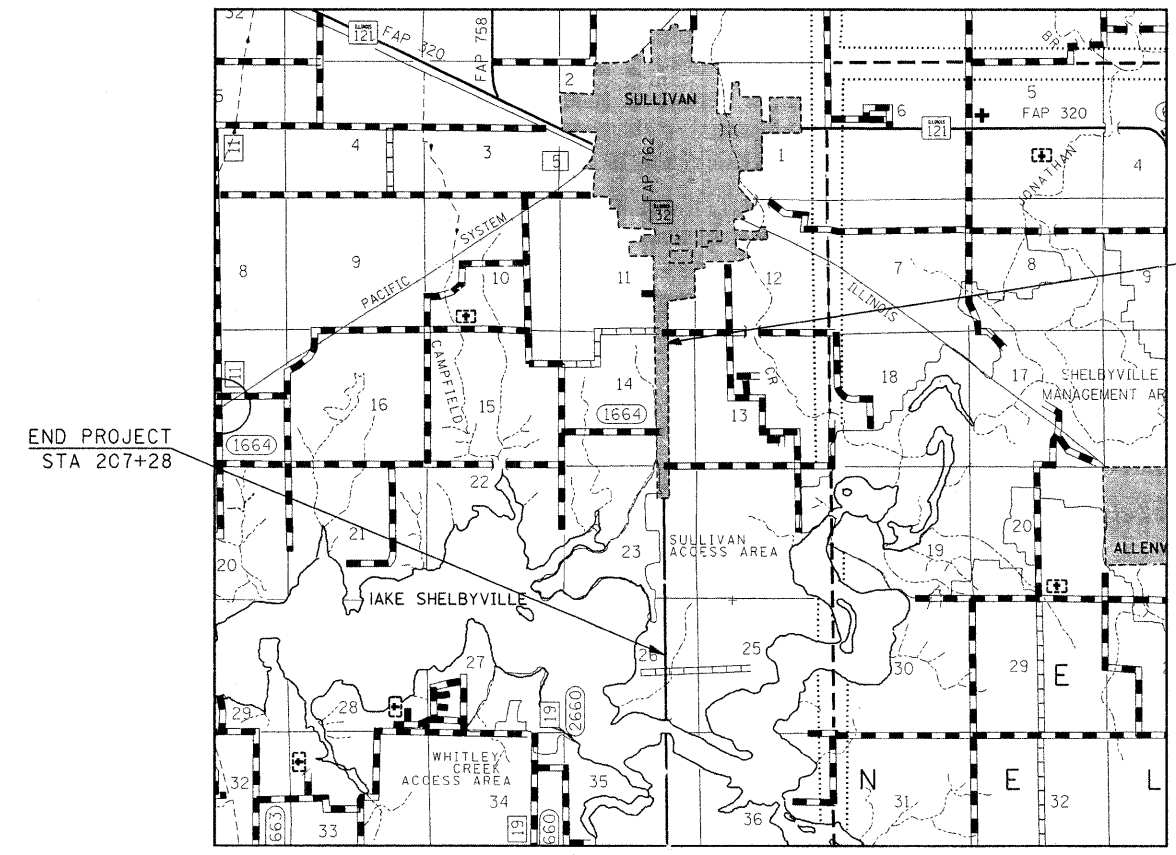
LOCATION OF SECTION INDICATED THIS: - [black rectangle]

ADT = 4300(2007)



FULL SIZE PLANS HAVE BEEN PREPARED USING STANDARD ENGINEERING SCALES. REDUCED SIZED PLANS WILL NOT CONFORM TO STANDARD SCALES. IN MAKING MEASUREMENTS ON REDUCED PLANS, THE ABOVE SCALES MAY BE USED.

J.U.L.I.E.  
JOINT UTILITY LOCATION INFORMATION FOR EXCAVATION  
1-800-892-0123  
OR 811



BEGIN PROJECT  
STA 80+05

END PROJECT  
STA 207+28

TOTAL LENGTH OF PROJECT = 12,723 FT 2.41 MILES

PROJECT ENGINEER: MARK DAUGHERTY  
PROJECT MANAGER: KALEB HIRTZEL

CONTRACT NO. 74413

STATE OF ILLINOIS  
DEPARTMENT OF TRANSPORTATION  
DIVISION OF HIGHWAYS

SUBMITTED March 22 2010  
Roger Z. Dinkel  
DEPUTY DIRECTOR OF HIGHWAYS, REGION ENGINEER

May 7 2010  
Scott E. Stett, P.E./bc  
ENGINEER OF DESIGN AND ENVIRONMENT

May 7 2010  
Christine M. Reed/bc  
DIRECTOR OF HIGHWAYS, CHIEF ENGINEER

**PRINTED BY THE AUTHORITY  
OF THE STATE OF ILLINOIS**