

STATE OF ILLINOIS  
DEPARTMENT OF TRANSPORTATION  
DIVISION OF HIGHWAYS

**PROPOSED  
HIGHWAY PLANS**

FAP ROUTE 325 (ILL 16)  
SECTION D7 HMA SAFETY SHLD 2010-2  
PROJECT ACHSIP-0325(053)  
SAFETY IMPROVEMENTS  
SHELBY COUNTY

C-97-055-10

FOR INDEX OF SHEETS, SEE SHEET NO. 2

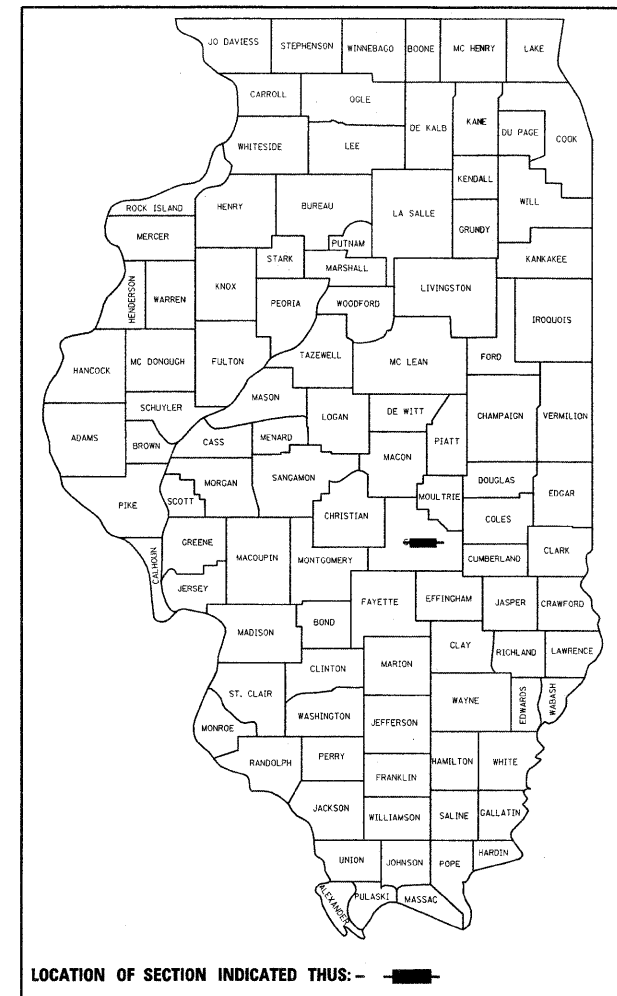
ADT = 4750 (2010)

BRIDGE OMISSION  
STR. NO. 087-0024 - 65'

F.A.P. RTE.	SECTION	COUNTY	TOTAL SHEETS	SHEET NO.
325		Shelby	8	1
		ILLINOIS	CONTRACT NO. 74444	

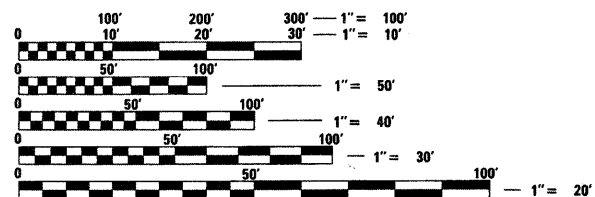
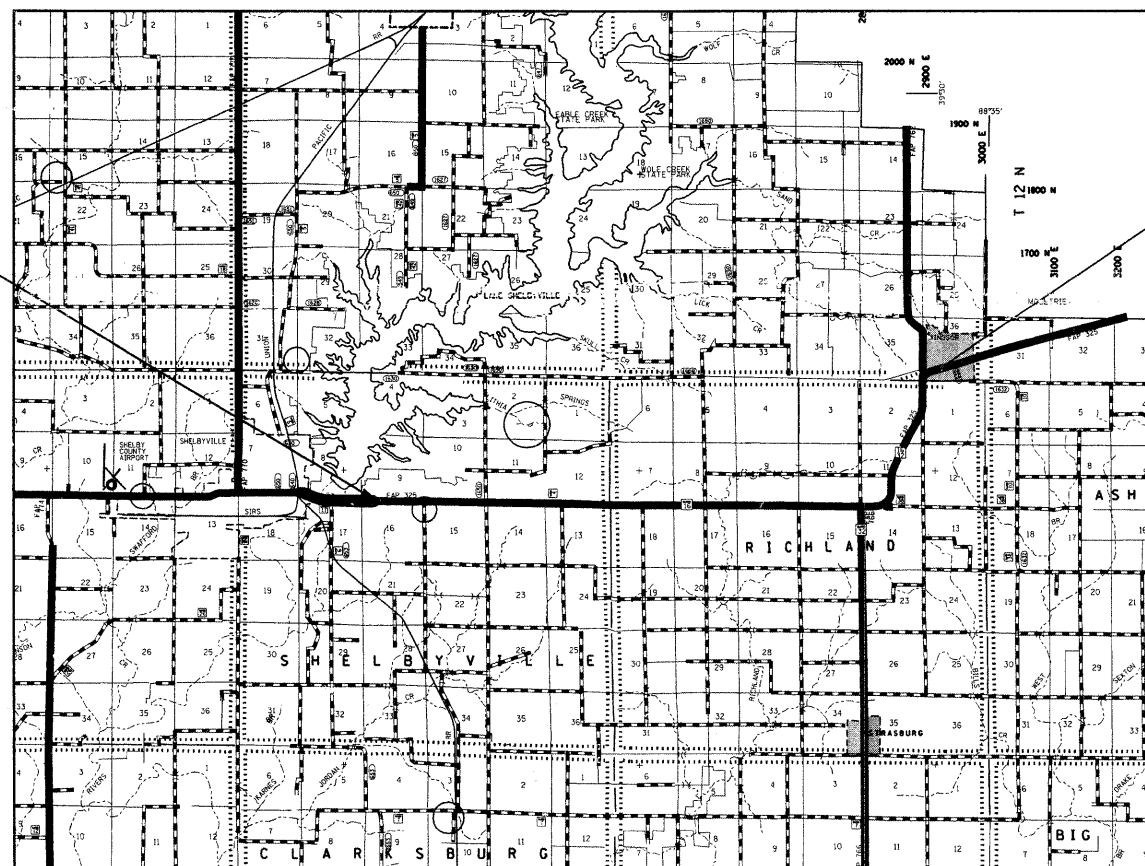
\*D7 HMA SAFETY SHLD 2010-2

D-97-024-10



PROJECT  
BEGINS  
STA 0+00

PROJECT  
ENDS  
STA 551+20



FULL SIZE PLANS HAVE BEEN PREPARED USING STANDARD ENGINEERING SCALES. REDUCED SIZED PLANS WILL NOT CONFORM TO STANDARD SCALES. IN MAKING MEASUREMENTS ON REDUCED PLANS, THE ABOVE SCALES MAY BE USED.

J.U.L.I.E.  
JOINT UTILITY LOCATION INFORMATION FOR EXCAVATION  
1-800-892-0123  
OR 811

PROJECT ENGINEER: MARK DAUGHERTY  
PROJECT MANAGER: JOYCE HEMMEN

CONTRACT NO. 74444

GROSS LENGTH = 55,120 FT. = 10.44 MILE  
NET LENGTH = 55,055 FT. = 10.43 MILE

STATE OF ILLINOIS  
DEPARTMENT OF TRANSPORTATION  
DIVISION OF HIGHWAYS

SUBMITTED April 19, 2010  
Brian L. Duckert  
DEPUTY DIRECTOR OF HIGHWAYS, REGION ENGINEER

May 7, 2010  
Scott E. Stitt, P.E. /s/  
Acting ENGINEER OF DESIGN AND ENVIRONMENT

May 7, 2010  
Christine M. Road /s/  
DIRECTOR OF HIGHWAYS, CHIEF ENGINEER

**PRINTED BY THE AUTHORITY  
OF THE STATE OF ILLINOIS**