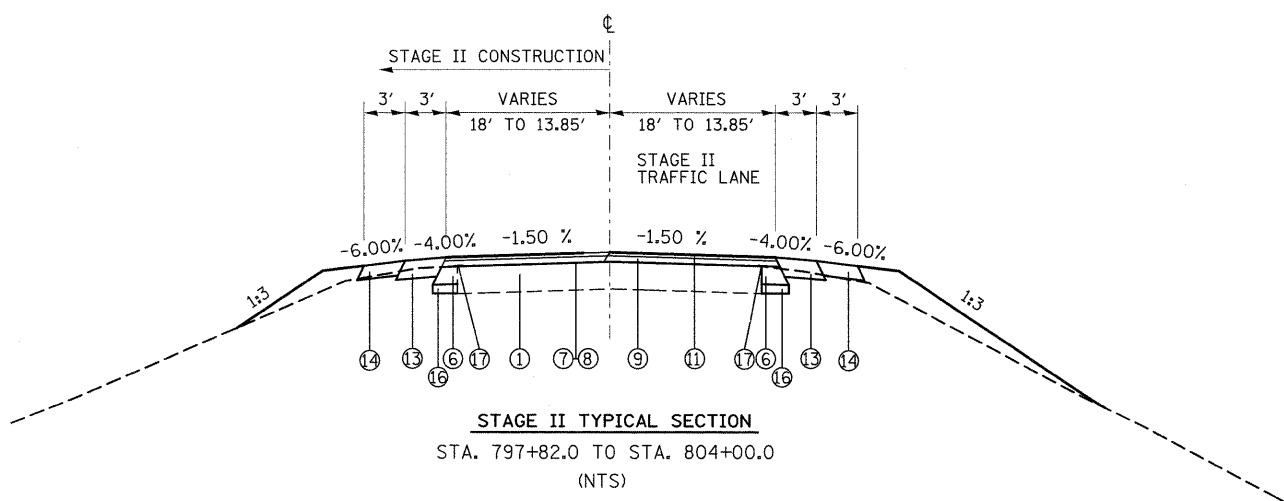
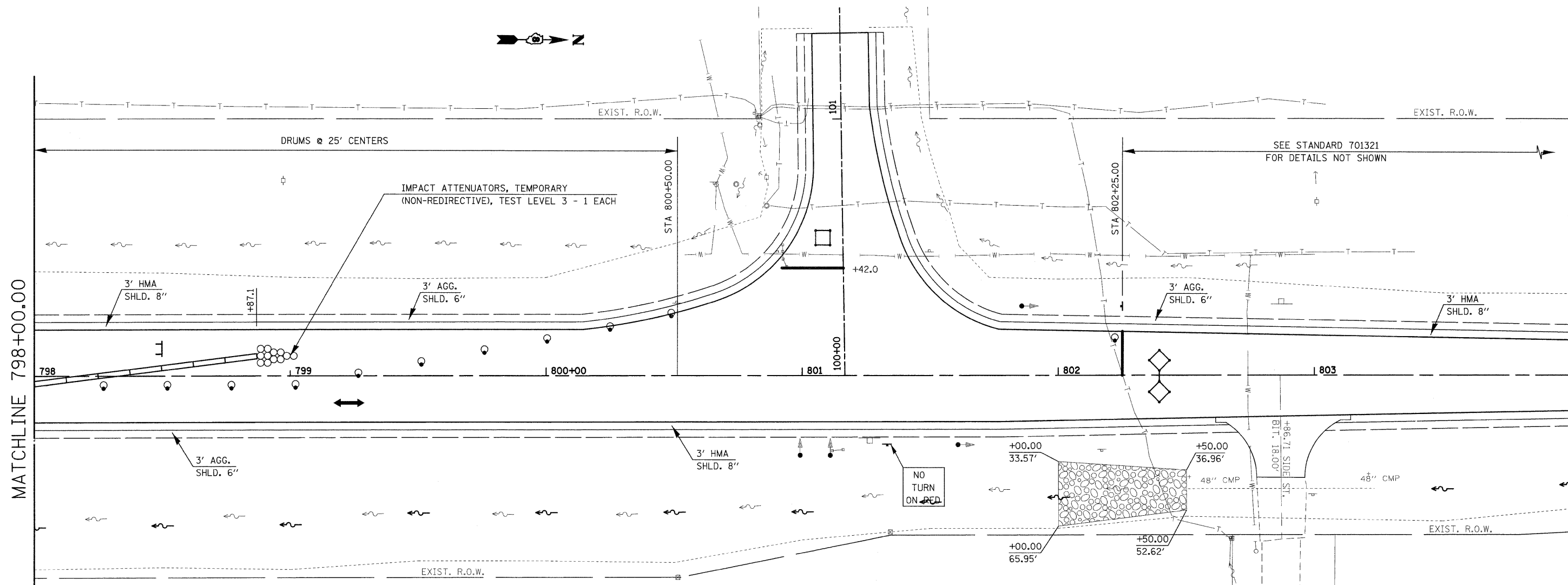


MATCHLINE 798+00.00

MATCHLINE 804+00.00



NOTE: SURFACE TO BE PLACED AFTER ALL STAGING COMPLETE AND JUST PRIOR TO FINAL STRIPING

- LEGEND**
- ① EXISTING PAVEMENT
  - ⑥ PROPOSED HMA BASE COURSE WIDENING, 12"
  - ⑦ PROPOSED BITUMINOUS MATERIALS (PRIME COAT)
  - ⑧ PROPOSED AGGREGATE (PRIME COAT)
  - ⑨ PROPOSED LEVELING BINDER
  - ⑪ PROPOSED HMA SURFACE COURSE, 1 1/2"
  - ⑬ PROPOSED HMA SHOULDER, 8"
  - ⑭ PROPOSED AGGREGATE SHOULDER, TYPE B 6"
  - ⑯ PROPOSED SUB-BASE GRANULAR MATERIAL, TY A, 12"
  - ⑰ PROPOSED STRIP REFLECTIVE CRACK CONTROL

- LEGEND:**
- SHOULDER REMOVAL
  - STRUCTURE REMOVAL
  - PAVEMENT REMOVAL
  - TEMPORARY CONCRETE BARRIER
  - IMPACT ATTENUATOR
  - INDUCTION LOOP DETECTOR
  - DRUM WITH STEADY BURNING LIGHT
  - SIGNALIZED TWO-WAY TRAFFIC LANE
  - TEMPORARY BRIDGE TRAFFIC SIGNAL
  - TYPE III BARRICADE



FILE NAME =	USER NAME = gelinh	DESIGNED -	REVISED -
os:\pwork\PWIDOT\GELINH\dms52514\stg00	Re.dgn	DRAWN -	REVISED -
PLOT SCALE = 20.0000' / IN.		CHECKED -	REVISED -
PLOT DATE = 1/22/2010		DATE -	REVISED -

**STATE OF ILLINOIS  
DEPARTMENT OF TRANSPORTATION**

**SUGGESTED STAGE II CONSTRUCTION  
AND TRAFFIC CONTROL**  
SCALE: 1" = 20' SHEET NO. 4 OF 5 SHEETS STA. 798+00.00 TO STA. 804+00.00

F.A.P. RTE.	SECTION	COUNTY	TOTAL SHEETS	SHEET NO.
682	21BR, 21-I-1	RANDOLPH	77	27
CONTRACT NO. 76126				
ILLINOIS FED. AID PROJECT				