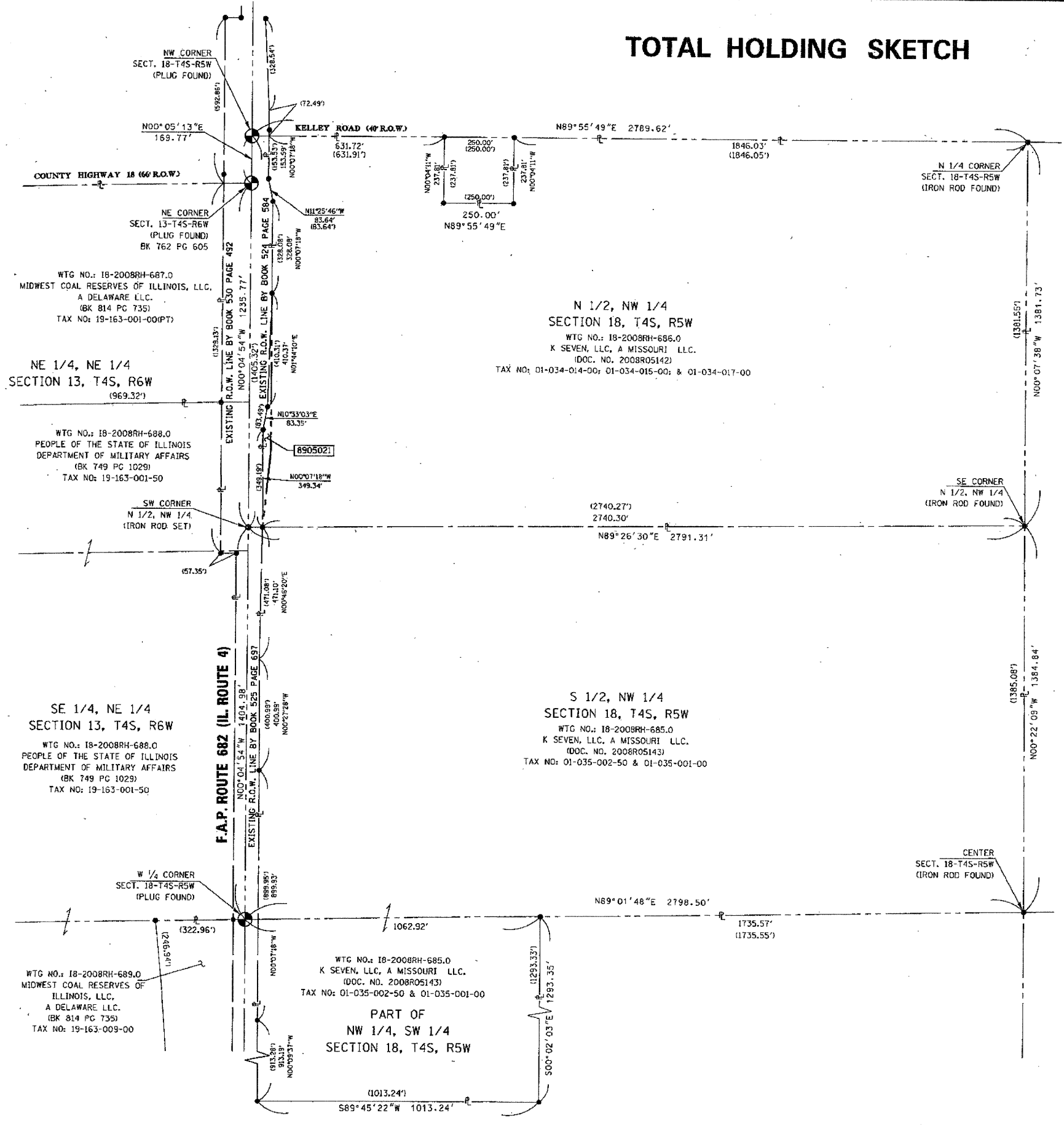


TOTAL HOLDING SKETCH



SPACE RESERVED FOR RECORDING OFFICER



WTG NO.: 18-2008RH-687.0
MIDWEST COAL RESERVES OF ILLINOIS, LLC,
A DELAWARE LLC.
(BK 814 PG 735)
TAX NO: 19-163-001-001PT)

NE 1/4, NE 1/4
SECTION 13, T4S, R6W
(969.32')

WTG NO.: 18-2008RH-688.0
PEOPLE OF THE STATE OF ILLINOIS
DEPARTMENT OF MILITARY AFFAIRS
(BK 749 PG 1029)
TAX NO: 19-163-001-50

SE 1/4, NE 1/4
SECTION 13, T4S, R6W

WTG NO.: 18-2008RH-688.0
PEOPLE OF THE STATE OF ILLINOIS
DEPARTMENT OF MILITARY AFFAIRS
(BK 749 PG 1029)
TAX NO: 19-163-001-50

WTG NO.: 18-2008RH-685.0
K SEVEN, LLC, A MISSOURI LLC.
(DOC. NO. 2008R05143)
TAX NO: 01-035-002-50 & 01-035-001-00

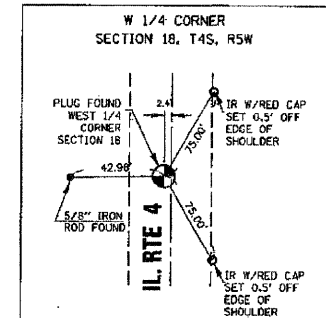
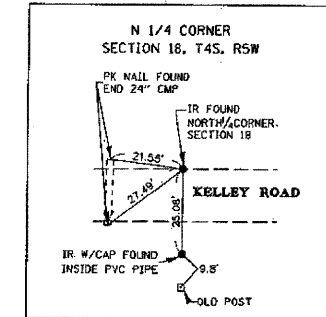
PART OF
NW 1/4, SW 1/4
SECTION 18, T4S, R5W

N 1/2, NW 1/4
SECTION 18, T4S, R5W

WTG NO.: 18-2008RH-686.0
K SEVEN, LLC, A MISSOURI LLC.
(DOC. NO. 2008R05142)
TAX NO: 01-034-014-00; 01-034-015-00; & 01-034-017-00

S 1/2, NW 1/4
SECTION 18, T4S, R5W

WTG NO.: 18-2008RH-685.0
K SEVEN, LLC, A MISSOURI LLC.
(DOC. NO. 2008R05143)
TAX NO: 01-035-002-50 & 01-035-001-00



COORDINATE TABLE				
IPNT #1/DESCRIPTION	STATION	OFFSET	NORTH	EAST
PLUG FOUND	802+88.06	0.36' RT	558,273.9160	2,429,867.1060
NW CORNER SECT. 18				
PLUG FOUND			558,463.3990	2,429,870.6140
E 1/4 CORNER SECT. 13				
PLUG FOUND	801+18.30	0.24' LT	558,104.1510	2,429,866.8480
NE CORNER SECT. 13				
IRF - N 1/4 CORNER SECTION 18			558,277.3080	2,432,656.7230
IRF - SE CORNER N 1/2 - NW 1/4 SECTION 18			556,895.5850	2,432,659.7920
IRS - SW CORNER N 1/2 - NW 1/4 SECTION 18	788+82.53	0.98' LT	556,866.3786	2,429,868.6103

STATE OF ILLINOIS)
) SS
COUNTY OF WASHINGTON)

I, GARY S. MUELLER, AN ILLINOIS PROFESSIONAL LAND SURVEYOR, CERTIFY THAT I HAVE SURVEYED THE PLAT OF HIGHWAY SHOWN HEREON AND THAT THIS PROFESSIONAL SERVICE CONFORMS TO THE CURRENT ILLINOIS MINIMUM STANDARDS FOR A BOUNDARY SURVEY FOR THE PROPOSED PARCELS TO BE ACQUIRED BY THE STATE OF ILLINOIS, DEPARTMENT OF TRANSPORTATION, SHOWN HEREON.

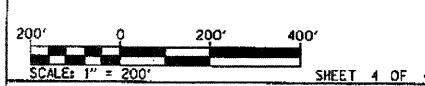
DATED 7/30/2009

Gary S. Mueller
GARY S. MUELLER, PLS NO. 3332
LICENSE EXPIRATION DATE: 11/30/2010

ASSOCIATED PROFESSIONALS, Inc.

17825 Mockingbird Road, P.O. Box 311
Nashville, Illinois 62263
Ph. 618-478-9000 Fax 618-478-9001
e-mail: api@apisurvey.com
IDPR Design Firm License No. 184-001303

ILLINOIS DEPARTMENT OF TRANSPORTATION
TOTAL HOLDING SKETCH
FAP ROUTE 682 (IL ROUTE 4)
SECTION 21BR
RANDOLPH COUNTY
JOB NO. R-98-005-09



ILLINOIS DEPARTMENT OF TRANSPORTATION
DIVISION OF HIGHWAYS/REGION 5/DISTRICT 8
1102 EASTPORT PLAZA DRIVE
COLLINSVILLE, ILLINOIS 62234-6198

F.A.P. RTE.	SECTION	COUNTY	TOTAL SHEETS	SHEET NO.
682	21BR	RANDOLPH	77	35

CONTRACT NO. 76126

COMPLETION DATE OF FIELD WORK PERFORMED
LAND SURVEY: 2/24/2009 ROW STAKING: 6/26/2009