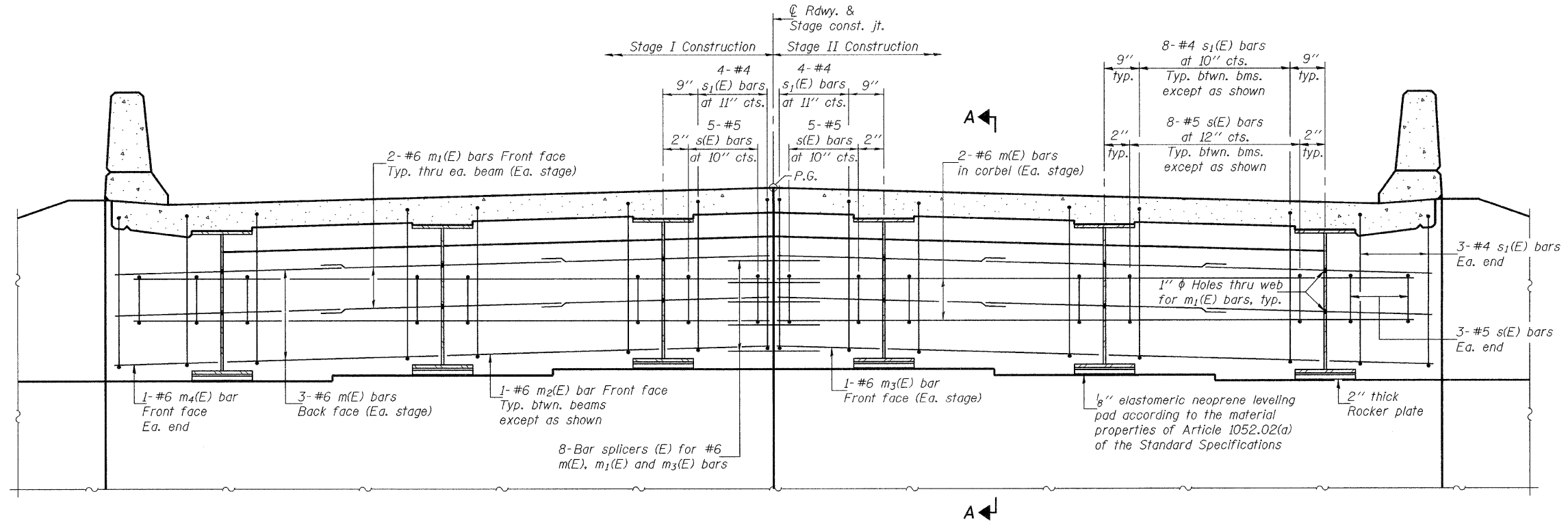
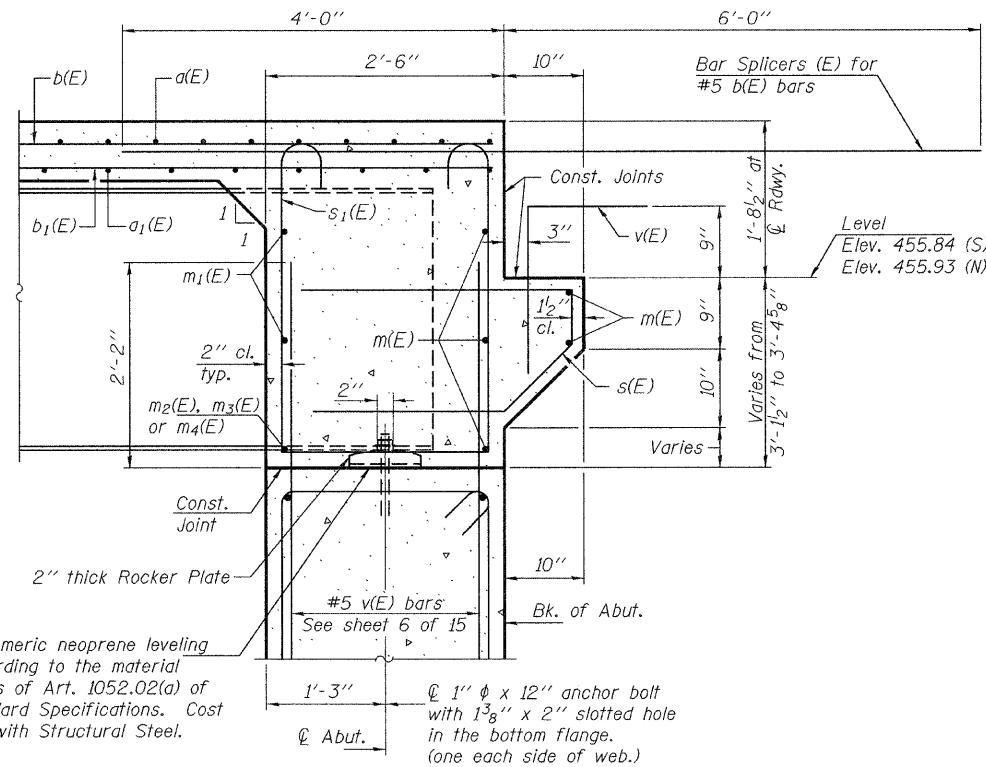


STATE OF ILLINOIS  
DEPARTMENT OF TRANSPORTATION



**DIAPHRAGM ELEVATION AT SOUTH ABUTMENT**  
(Looking south - North abutment similar)

Notes: Reinforcement bars in diaphragm are billed with superstructure on sheet 10 of 21.  
Concrete in diaphragm is included with Concrete Superstructure on sheet 10 of 21.  
For details of bars s(E) & s<sub>1</sub>(E) see sheet 10 of 21.  
For bar splicer (E) details see sheet 19 of 21.



**SECTION A - A**

**MIN. BAR LAP**  
#6 bar = 2'-7"

DESIGNED	J.E. KRAMER
CHECKED	P.E. COPPERNOLL
DRAWN	AMBER SEIBER <i>htd</i>
CHECKED	GRA

EXAMINED	Thomas J. Domagalaki ENGINEER OF BRIDGE DESIGN
PASSED	Ralph E. Anderson ENGINEER OF BRIDGES AND STRUCTURES

March 2, 2010

SHEET NO. 11 21 SHEETS	F.A.P. RTE.	SECTION	COUNTY	TOTAL SHEETS	SHEET NO.
	682	21BR, 21-I-1	RANDOLPH	77	50
			CONTRACT NO. 76126		
FED. ROAD DIST. NO. ILLINOIS FED. AID PROJECT					

**DIAPHRAGM DETAILS**  
**STRUCTURE NO. 079-0050**