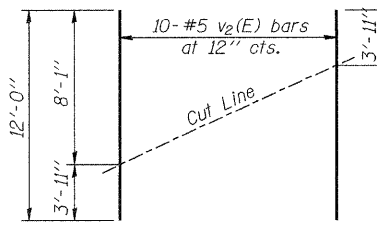
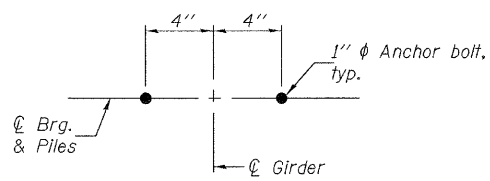
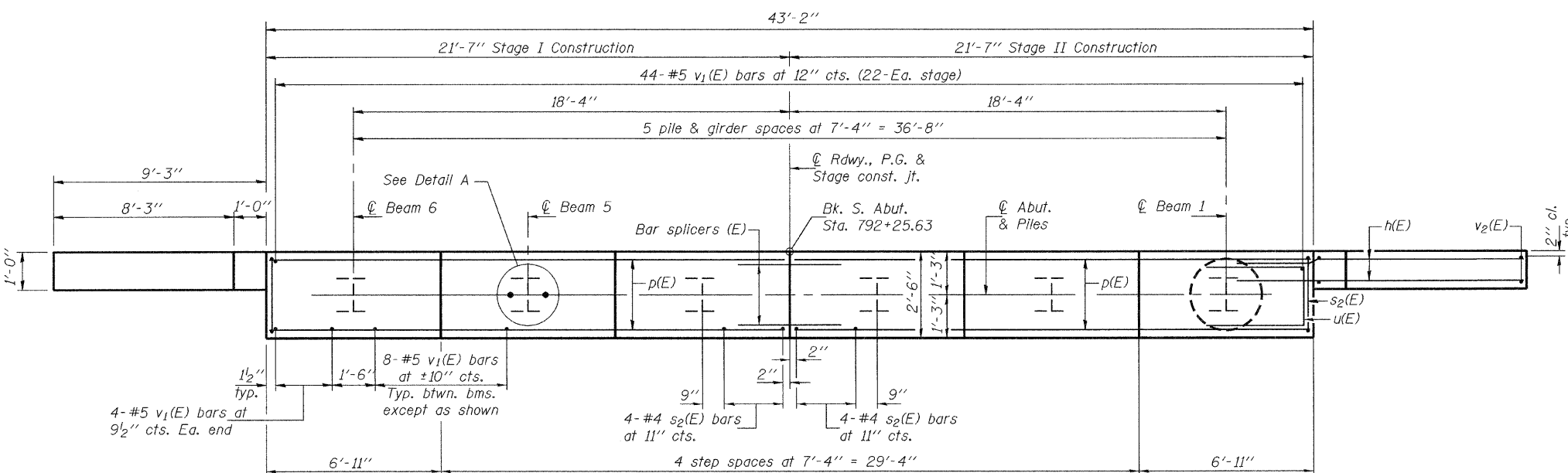
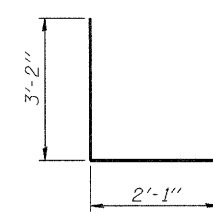
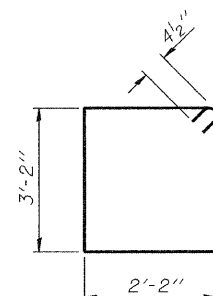
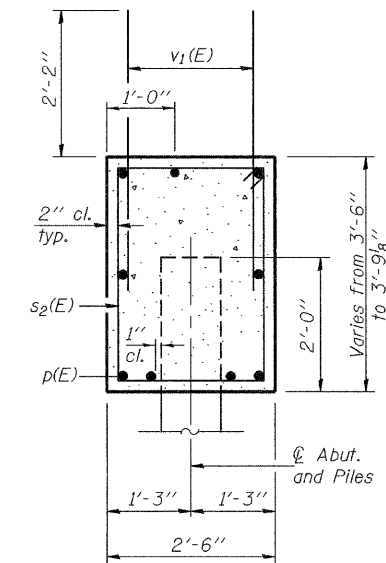
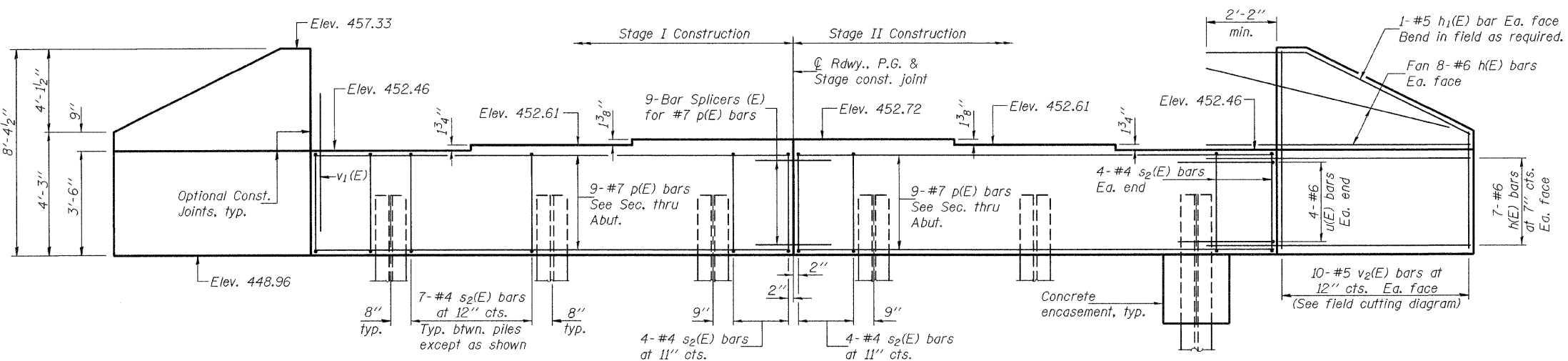


STATE OF ILLINOIS
DEPARTMENT OF TRANSPORTATION

Notes: Pour steps monolithically with cap.
For bar splicer assembly details see sheet 19 of 21.
Space reinforcement in cap to miss anchor bolts.



PILE DATA

Type: Steel HP 10x57
Nominal Required Bearing: 454 Kips
Factored Resistance Available: 227 Kips
Est. Length: 56'
No. Production Piles: 5
No. Test Piles: 1

DESIGNED	J.E. KRAMER
CHECKED	P.E. COPPERNOLL
DRAWN	AMBER SEIBER htd
CHECKED	GRA

March 2, 2010

EXAMINED *Thomas J. Domagalaki*
ENGINEER OF BRIDGE DESIGN

PASSED *Ralph E. Anderson*
ENGINEER OF BRIDGES AND STRUCTURES

BILL OF MATERIAL

Bar	No.	Size	Length	Shape
h(E)	60	#6	12'-0"	—
h ₁ (E)	4	#5	12'-8"	—
p(E)	18	#7	21'-3"	—
s ₂ (E)	44	#4	11'-5"	□
u(E)	8	#6	8'-5"	□
v ₁ (E)	92	#5	4'-4"	—
v ₂ (E)	20	#5	12'-0"	—
Concrete Structures		Cu. Yd.	18.4	
Reinforcement Bars, Epoxy Coated		Pound	3020	
Structure Excavation		Cu. Yd.	95	
Furnishing Steel Piles HP10x57		Foot	280	
Driving Piles		Foot	280	
Test Pile HP10x57		Each	1	
Anchor Bolts, 1" ∅		Each	12	
Concrete Encasement		Cu. Yd.	2.1	

**SOUTH ABUTMENT
STRUCTURE NO. 079-0050**

SHEET NO. 14 21 SHEETS	F.A.P. RTE. 682	SECTION 21BR, 21-I-1	COUNTY RANDOLPH	TOTAL SHEETS 17	SHEET NO. 53
	CONTRACT NO. 76126				
FED. ROAD DIST. NO.		ILLINOIS FED. AID PROJECT			