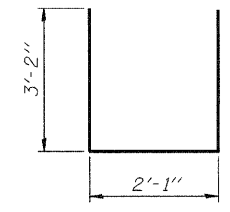
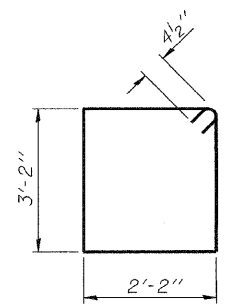
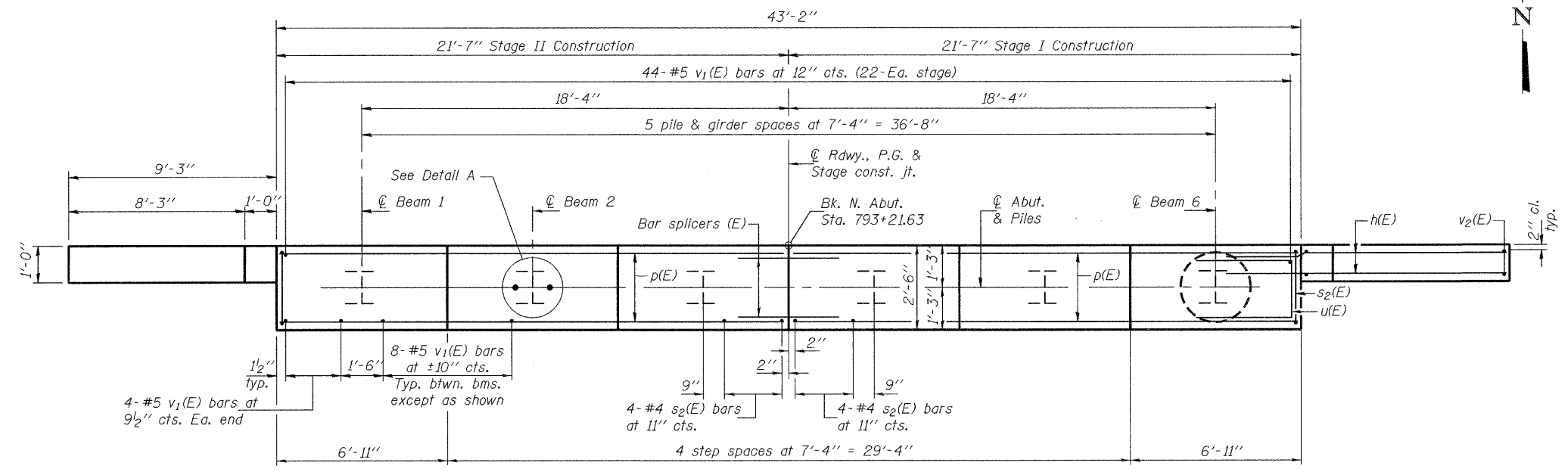
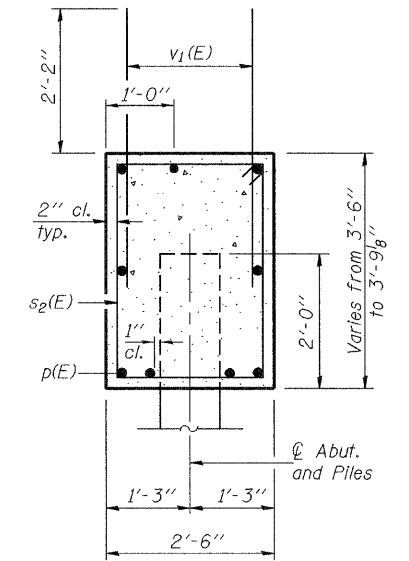
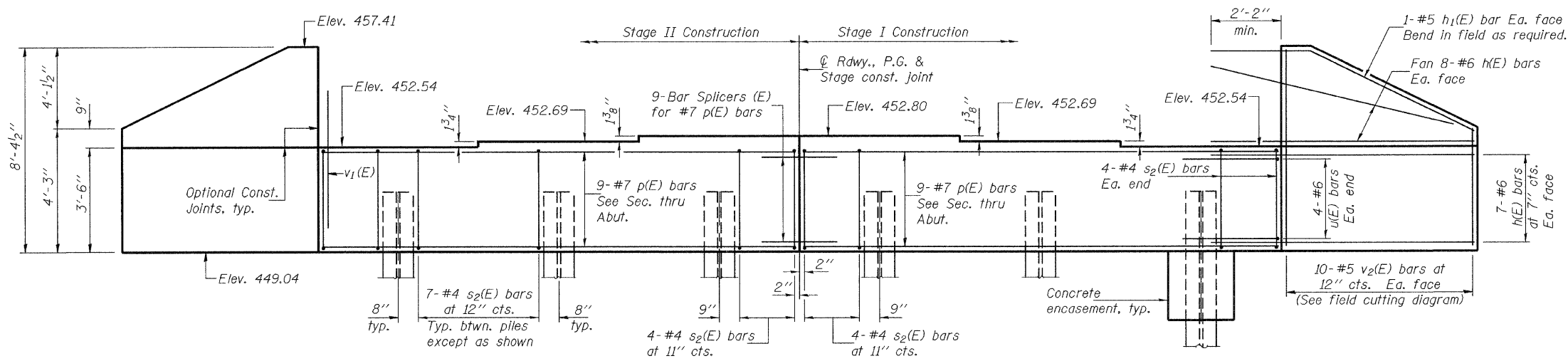


STATE OF ILLINOIS
DEPARTMENT OF TRANSPORTATION

Notes: Pour steps monolithically with cap.
For bar splicer assembly details see sheet 19 of 21.
Space reinforcement in cap to miss anchor bolts.

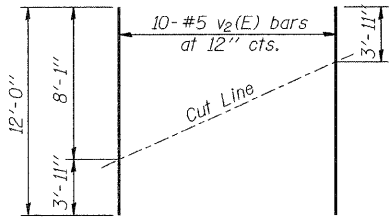
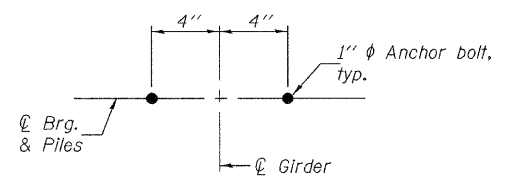


BILL OF MATERIAL

Bar	No.	Size	Length	Shape
h(E)	60	#6	12'-0"	—
h ₁ (E)	4	#5	12'-8"	—
p(E)	18	#7	21'-3"	—
s ₂ (E)	44	#4	11'-5"	□
u(E)	8	#6	8'-5"	—
v ₁ (E)	92	#5	4'-4"	—
v ₂ (E)	20	#5	12'-0"	—
Concrete Structures		Cu. Yd.	18.4	
Reinforcement Bars, Epoxy Coated		Pound	3020	
Structure Excavation		Cu. Yd.	95	
Furnishing Steel Piles HP10x57		Foot	305	
Driving Piles		Foot	305	
Test Pile HP10x57		Each	1	
Anchor Bolts, 1" ∅		Each	12	
Concrete Encasement		Cu. Yd.	2.1	

PILE DATA

Type: Steel HP 10x57
Nominal Required Bearing: 454 Kips
Factored Resistance Available: 227 Kips
Est. Length: 61'
No. Production Piles: 5
No. Test Piles: 1



DESIGNED J.E. KRAMER
CHECKED P.E. COPPERNOLL
DRAWN AMBER SEIBER htd
CHECKED GRA

March 2, 2010

EXAMINED *Thomas J. Domagalaki*
ENGINEER OF BRIDGE DESIGN

PASSED *Ralph E. Anderson*
ENGINEER OF BRIDGES AND STRUCTURES

**NORTH ABUTMENT
STRUCTURE NO. 079-0050**

SHEET NO. 15 21 SHEETS	F.A.P. RTE. 682	SECTION 21BR, 21-I-1	COUNTY RANDOLPH	TOTAL SHEETS 77	SHEET NO. 54
	CONTRACT NO. 76126			ILLINOIS FED. AID PROJECT	