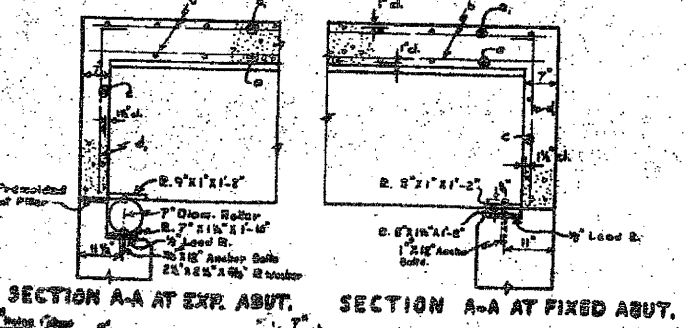
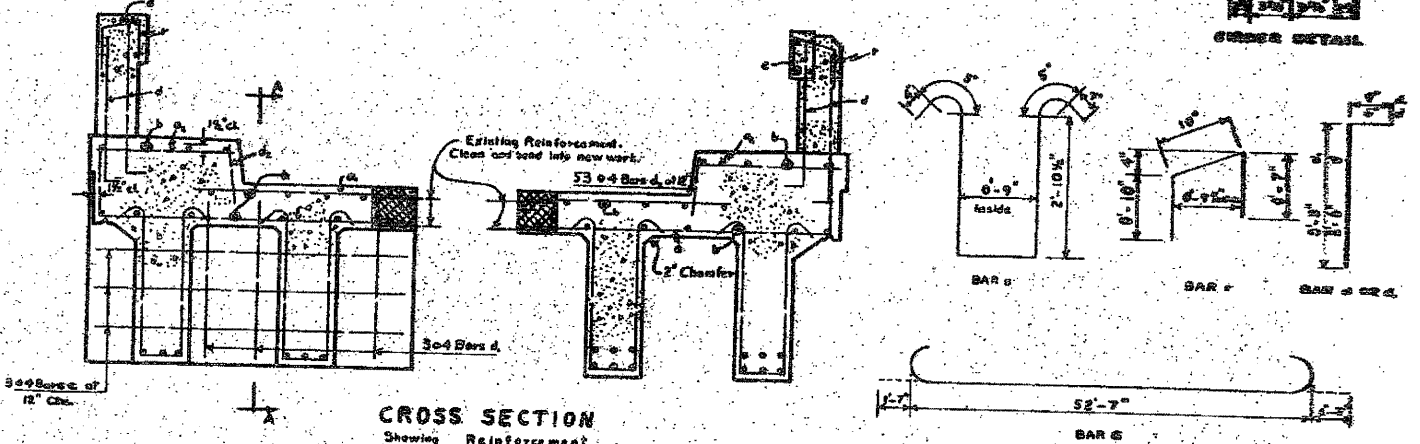
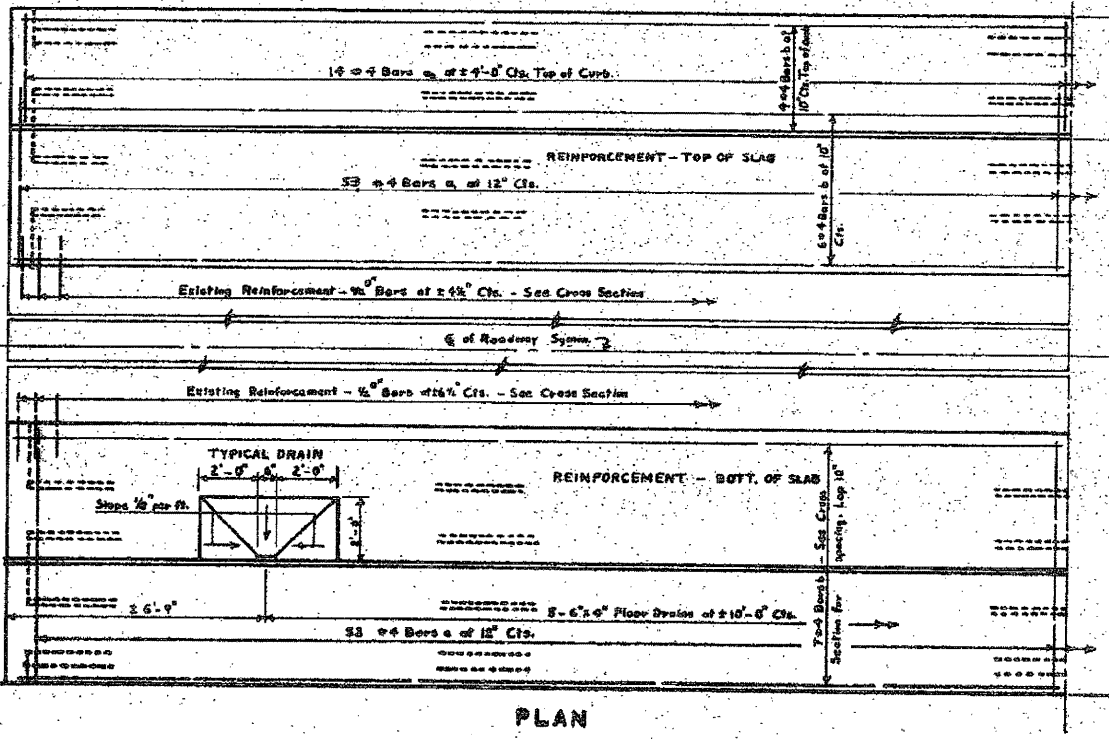
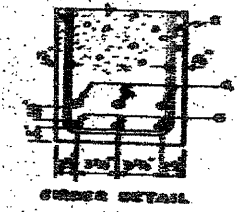
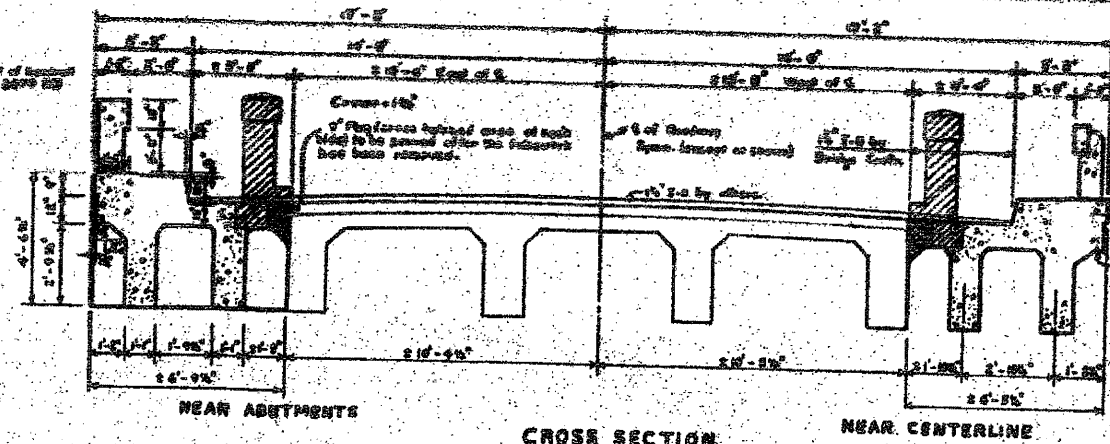
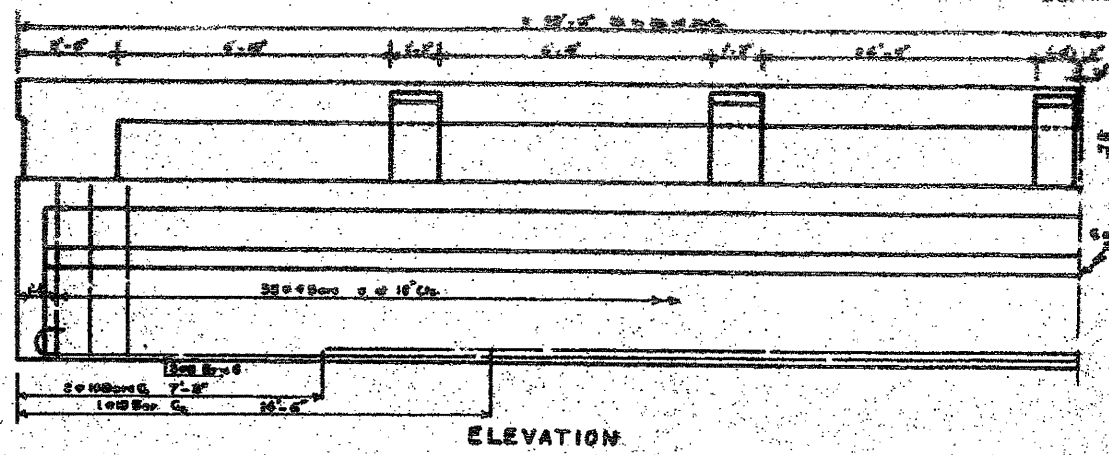


STATE OF ILLINOIS
DEPARTMENT OF PUBLIC WORKS & BUILDINGS
DIVISION OF HIGHWAYS

DATE	NO.	BY	CHKD.
5/26/33	1	W. H.



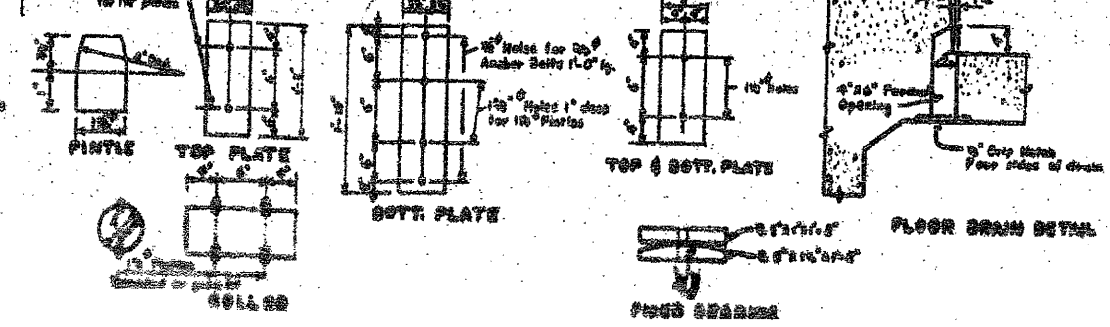
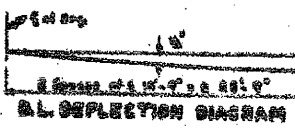
BILL OF MATERIAL

BAR	NO.	SIZE	LENGTH	SHAPE
a	104	0-4	7'-9"	
b	106	0-4	4'-9"	
c	28	0-4	2'-9"	
d	68	0-4	27'-0"	
e	12	0-4	6'-0"	
f	68	0-5	3'-0"	
g	12	0-4	4'-0"	
h	106	0-4	1'-9"	
i	32	0-4	2'-9"	
j	16	0-4	25'-0"	
k	12	0-4	15'-0"	
l	8	0-8	30'-0"	
m	4	0-10	24'-0"	
n	100	0-4	8'-0"	

Memory Bars - 15
Hand-drawn Concrete - 3.0
Steel & Concrete - 1.0
Reinforcement Bars - 1.0
Structural Steel - 1.0
Home Plates - Each 1

DESIGNED *V. J. ...*
DRAWN *W. H. ...*
CHECKED *...*
DATE *May 26 1933*

W. H. ...
...
...



SUPERSTRUCTURE
SEE P.L. SEC. 21-B-1
RANDOLPH CO.
STA. 222+25

FOR INFORMATION ONLY

FILE NAME =	USER NAME = #USER#	DESIGNED -	REVISED -	STATE OF ILLINOIS DEPARTMENT OF TRANSPORTATION	EXISTING STRUCTURE PLANS	F.A.P. RTE.	SECTION	COUNTY	TOTAL SHEETS	SHEET NO.	
#FILE#		DRAWN -	REVISED -			682	21B-21-F-2	RANDOLPH	77	62	
		CHECKED -	REVISED -			CONTRACT NO. 76126					
		DATE	REVISED -			FED. ROAD DIST. NO. [ILLINOIS] FED. AID PROJECT					