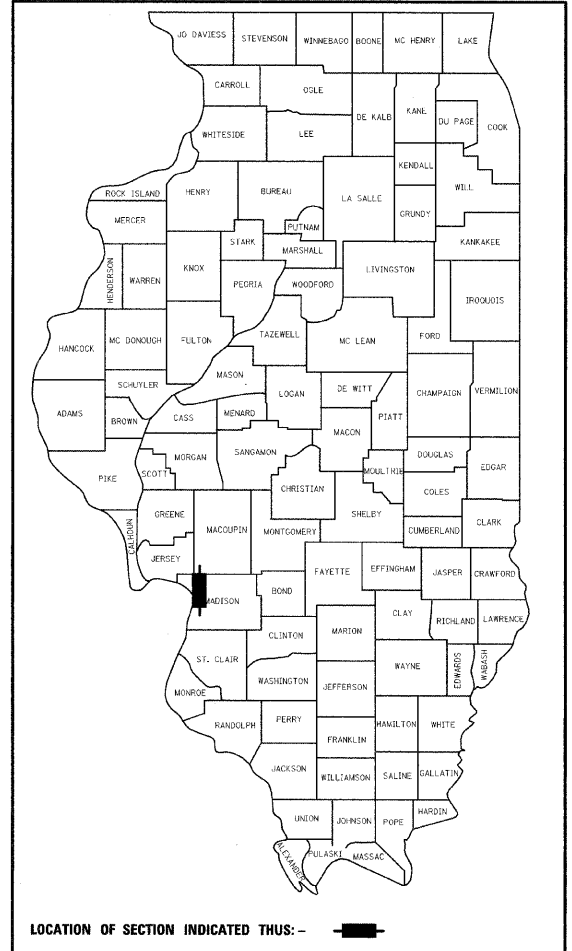


F.A.P. RTE.	SECTION	COUNTY	TOTAL SHEETS	SHEET NO.
310	60-16	MADISON	662	1

FED. ROAD DIST. NO. 8 ILLINOIS FED. AID PROJECT

\* (662 - 1 + 6 = 667)

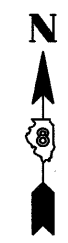
D-98-113-96



**STATE OF ILLINOIS  
DEPARTMENT OF TRANSPORTATION  
DIVISION OF HIGHWAYS**

**PLANS FOR PROPOSED  
FEDERAL AID HIGHWAY**

**FAP 310 (US 67)  
PROJECT NO. ACNHF-HPD-1570(001)  
SECTION 60-16  
C-98-121-01  
MADISON COUNTY**



**INDEX OF SHEETS**

- 1 COVER SHEET
- 2 GENERAL NOTES AND STANDARDS
- 3 COMMITMENTS **DELETED**
- 4 SCHEMATIC DIAGRAM
- 5-8 SUMMARY OF QUANTITIES
- 9 MIXTURE REQUIREMENTS
- 10-20 TYPICAL SECTIONS
- 21-38 SCHEDULE OF QUANTITIES
- 39-41 HORIZONTAL CONTROL
- 42-46 REFERENCE TIES
- 47-71 PLAN AND PROFILE SHEETS
- 72-76 PROFILE SHEETS
- 77-98 STAGE CONSTRUCTION SHEETS AND TRAFFIC CONTROL
- 99-114 STORM WATER POLLUTION AND PREVENTION PLANS
- 115-121 STORM SEWER SHEETS
- 122-152 PLAT OF HIGHWAY SHEETS
- 153-161 INTERSECTION DETAILS
- 162-180 SIGNING AND PAVEMENT MARKING SHEETS
- 181-184 TRAFFIC SIGNAL SHEETS
- 185-188 BRIDGE APPROACH PAVEMENT DETAILS
- 189-202 PIPE CULVERT SHEETS
- 203-208 GUARDRAIL SHEETS
- 209-210 ENTRANCE DETAILS
- 211-212 SUPERELEVATION TRANSITION DETAILS
- 213 CONSTRUCTION DETAILS
- 214 PIPE UNDERDRAIN DETAILS
- 215 RAMP A AND RAMP B DETAILS
- 216 RAMP A EXIT TERMINAL
- 217 RAMP B ENTRANCE TERMINAL
- 218-220 SHEAR LINE DETAILS
- 221-568 MAINLINE CROSS SECTIONS
- 569-662 SIDEROAD CROSS SECTIONS
- XXX ~~DEMOLITION PLANS~~  
(TO BE PROVIDED & INSERTED BY THE DISTRICT)

END SECTION 60-16  
STATION 225+00.00

OMISSION No. 3  
SECTION 60-16-1B  
STATION 165+05.98 TO  
STATION 166+38.14

OMISSION No. 2  
SECTION 60-16B  
STATION 159+64.94 TO  
STATION 160+83.17

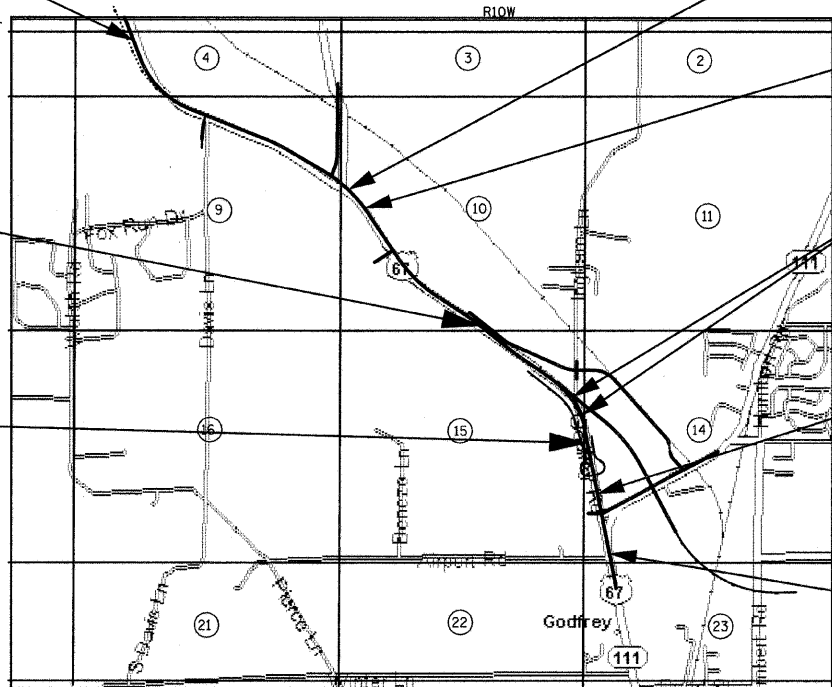
OMISSION No. 1  
SECTION 60-15HB-3  
STATION 15+33.00 TO  
STATION 21+64.00

STATION EQUATION  
STA. 47+03.34(RAMP B)BK=  
STA. 122+00.00(FAP 310)AH

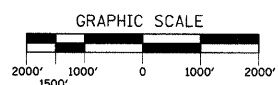
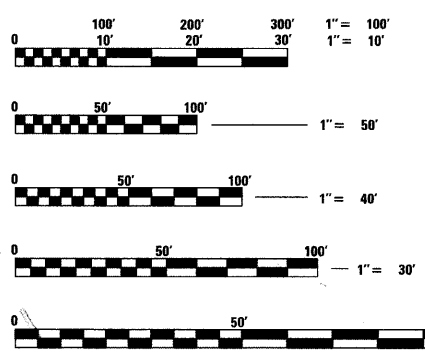
STATION EQUATION  
STA. 47+89.46 (U.S. 67)BK=  
STA. 0+00.00 (RAMP B)AH

STATION EQUATION  
STA. 177+10.39 (U.S. 67)BK=  
STA. 45+00.00 (U.S. 67)AH

BEGIN SECTION 60-16  
STATION 165+45.00



LOCATION MAP SCALE: 1" = 2000'  
GODFREY TOWNSHIP



FULL SIZE PLANS HAVE BEEN PREPARED USING STANDARD ENGINEERING SCALES, REDUCED SIZED PLANS WILL NOT CONFORM TO STANDARD SCALES, IN MAKING MEASUREMENTS ON REDUCED PLANS, THE ABOVE SCALES MAY BE USED.

J.U.L.I.E.  
JOINT UTILITY LOCATION INFORMATION FOR EXCAVATION  
1-800-892-0123

**CONTRACT NO. 76311**

**DESIGN DESIGNATION**

FAP 310 - 3350 (24) RURAL MAJOR, 7.11 (FD-20)  
ADT = 15, 525 (2004)  
ADT = 17, 300 (2005)  
ADT = 21, 035 (2014)  
PU = 87%  
Su = 6%  
Mu = 7%

GROSS LENGTH SECTION 60-16 = 16,458.19 FEET = 3.117 MILES  
OMISSION No. 1 = 631.00 FEET = 0.120 MILES  
OMISSION No. 2 = 118.23 FEET = 0.022 MILES  
OMISSION No. 3 = 132.16 FEET = 0.025 MILES  
NET LENGTH SECTION 60-16 = 15,576.80 FEET = 2.950 MILES

STATE OF ILLINOIS  
DEPARTMENT OF TRANSPORTATION  
DIVISION OF HIGHWAYS

SUBMITTED Dec 10 20 09  
My Crami  
DEPUTY DIRECTOR OF HIGHWAYS, REGION ENGINEER

May 7 20 10  
Scott E. Stitt, P.E.  
acting ENGINEER OF DESIGN AND ENVIRONMENT

May 7 20 10  
Christine M. Reed  
DIRECTOR OF HIGHWAYS, CHIEF ENGINEER

**PRINTED BY THE AUTHORITY  
OF THE STATE OF ILLINOIS**



Mark A. Reitz  
MARK A. REITZ P.E.#062-047531 DATE 9-7-1-09  
HURST-ROSCH ENGINEERS, INC.

PROJECT ENGINEER: FOM-MANNING-1010-000-0005 PATTI LEBEAU 618 396-3179  
SQUAD LEADER: WENDA GOUTHERLAND (618) 346-0992 CHERYL KEPLAR 618 346-3186

I:\1207-Programs\Cover.dwg 9/8/2009 11:04:23 AM