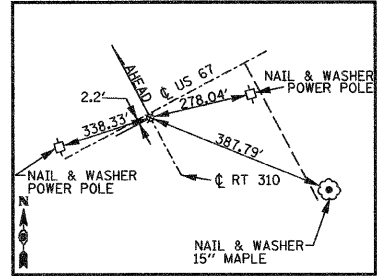
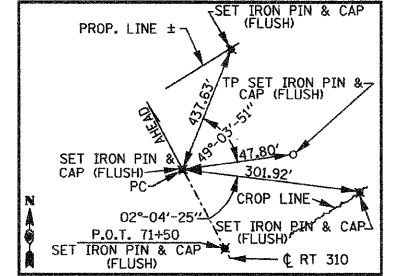


F.A.P. RTE.	SECTION	COUNTY	TOTAL SHEETS	SHEET NO.
310	60-16	MADISON	662	42
STA.		TO STA.		
FED. ROAD DIST. NO. 8		ILLINOIS FED. AID PROJECT		

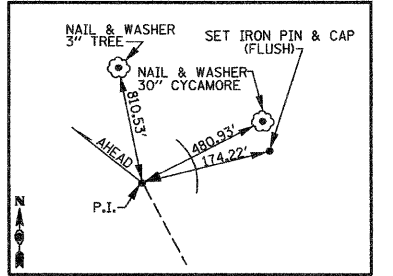
CONTRACT NO. 76311



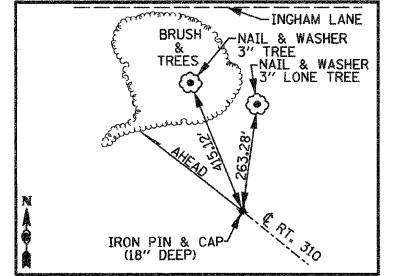
P.O.T. STA. 67+83.55 F.A.P. RTE. 310
PK NAIL SET



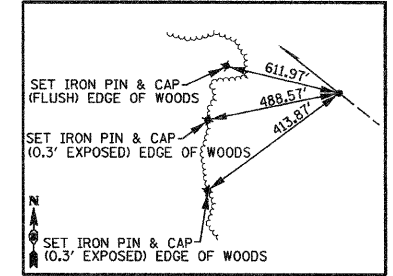
PC STA. 73+49.03 F.A.P. RTE. 310
IRON PIN & CAP (FLUSH)



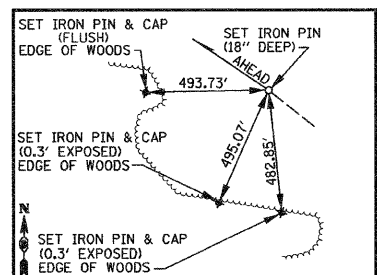
PI STA. 80+34.80 F.A.P. RTE. 310
IRON PIN & CAP (FLUSH)



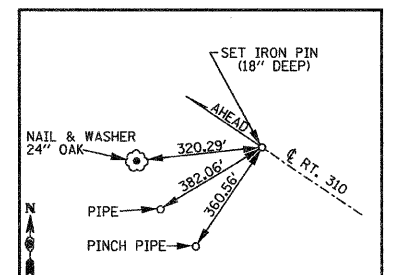
PT STA. 87+00.91 F.A.P. RTE. 310



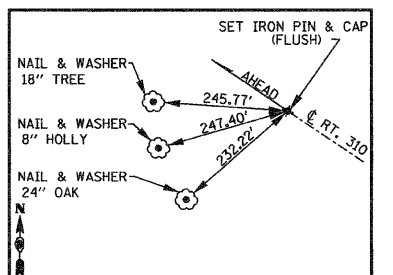
PC STA. 100+28.54 F.A.P. RTE. 310
60 SPIKE SET OVER IRON PIN (18\"/>



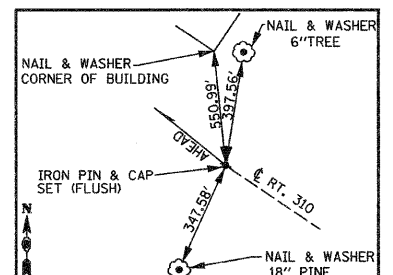
P.I. STA. 102+83.08 F.A.P. RTE. 310
60 SPIKE SET OVER IRON PIN (18\"/>



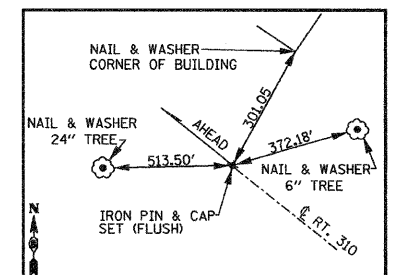
P.T. STA. 105+37.40 F.A.P. RTE. 310
60 SPIKE SET OVER IRON PIN (18\"/>



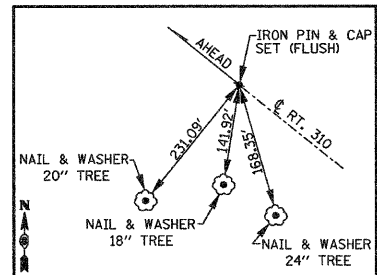
PC STA. 107+41.67 F.A.P. RTE. 310
IRON PIN & CAP SET (FLUSH)



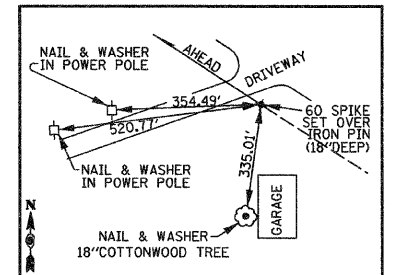
PI STA. 111+57.88 F.A.P. RTE. 310
IRON PIN & CAP SET (FLUSH)



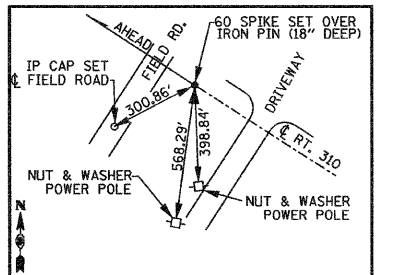
P.T. STA. 115+73.63 F.A.P. RTE. 310
IRON PIN & CAP SET (FLUSH)



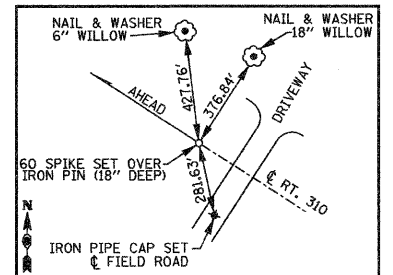
PC STA. 121+55.12 F.A.P. RTE. 310
IRON PIN & CAP SET FLUSH



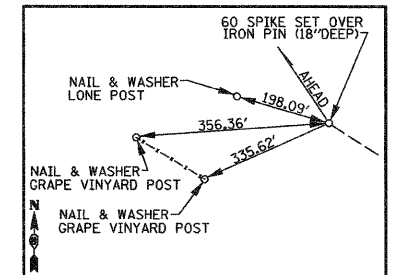
PI STA. 124+63.18 F.A.P. RTE. 310
60 SPIKE SET OVER IRON PIN (18\"/>



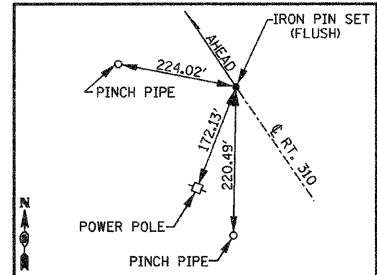
PT STA. 127+70.65 F.A.P. RTE. 310
60 SPIKE SET OVER IRON PIN (18\"/>



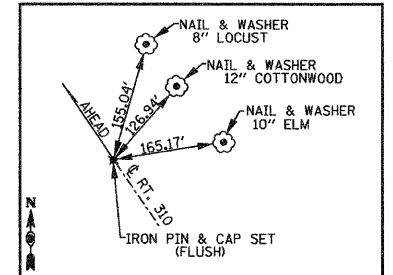
PC STA. 133+14.00 F.A.P. RTE. 310
60 SPIKE SET OVER IRON PIN (18\"/>



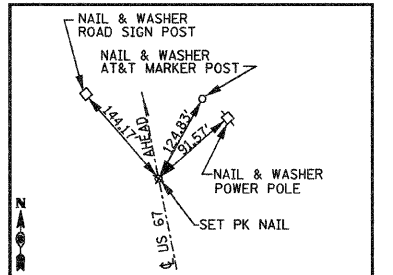
PI STA. 139+88.75 F.A.P. RTE. 310
IRON PIN & CAP SET (FLUSH)



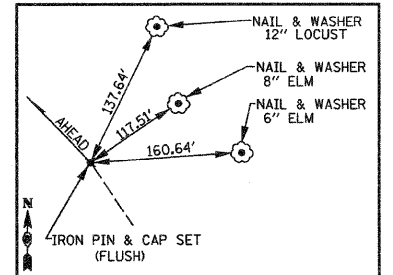
PT STA. 146+44.95 F.A.P. RTE. 310
IRON PIN SET (FLUSH)



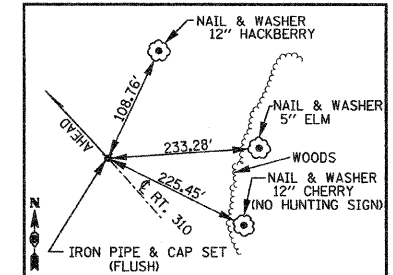
PC STA. 158+11.69 F.A.P. RTE. 310
IRON PIN & CAP SET (FLUSH)



POT STA. 160+00 F.A.P. RTE. 310
SET PK NAIL



PI STA. 160+96.28 F.A.P. RTE. 310
IRON PIN & CAP SET (FLUSH)



PCC STA. 163+79.84 F.A.P. RTE. 310
IRON PIN & CAP SET (FLUSH)

REVISIONS	
NAME	DATE

ILLINOIS DEPARTMENT OF TRANSPORTATION

REFERENCE TIES

SCALE: NO SCALE
DATE: 09-04-09

DRAWN BY: U.J.
CHECKED BY: J.J.C.

E:\2007\9\usdway\refontie2.dwg 9/2/2009 3:29:23 PM