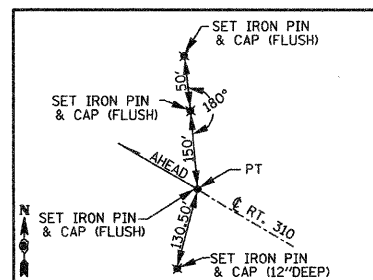
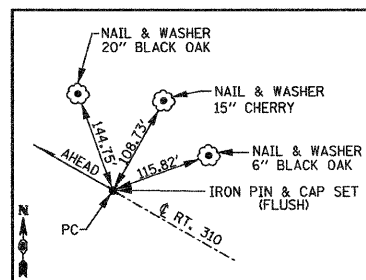


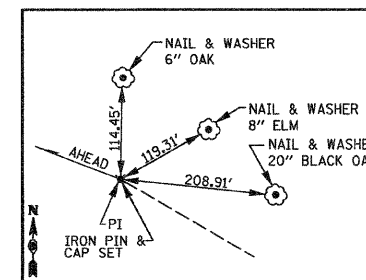
PI STA. 168+25.32 F.A.P. RTE. 310
IRON PIN & CAP SET (FLUSH)



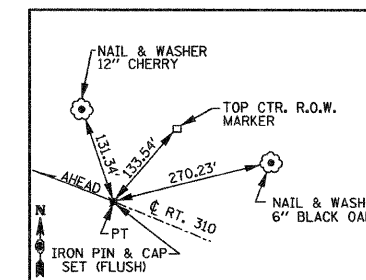
PT STA. 172+63.86 F.A.P. RTE. 310
IRON PIN & CAP SET (FLUSH)



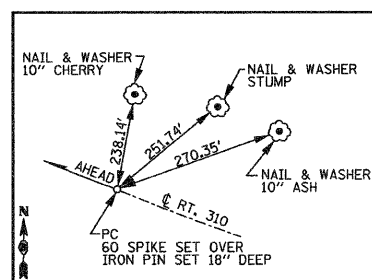
PC STA. 182+76.78 F.A.P. RTE. 310
IRON PIN & CAP SET (FLUSH)



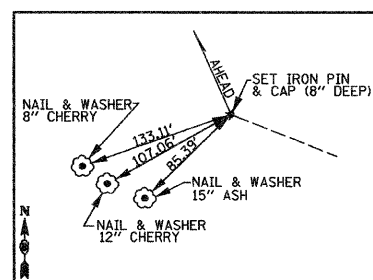
PI STA. 185+23.34 F.A.P. RTE. 310
IRON PIN & CAP SET (FLUSH)



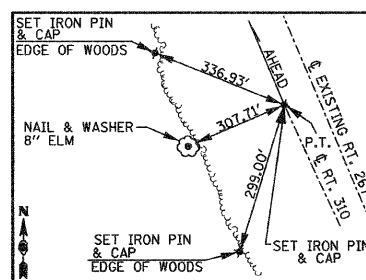
PT STA. 187+68.97 F.A.P. RTE. 310
IRON PIN & CAP SET (FLUSH)



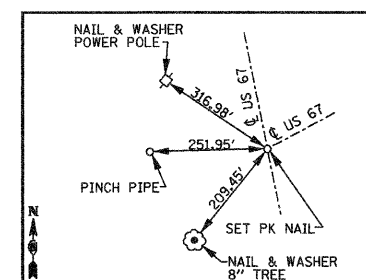
PC STA. 206+69.03 F.A.P. RTE. 310
IRON PIN WITH CAP SET (18" DEEP)



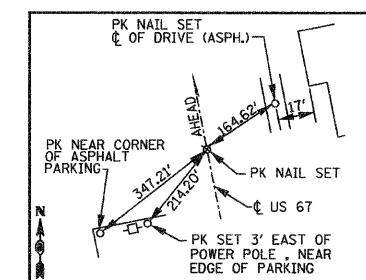
PI STA. 215+34.35 F.A.P. RTE. 310
SET IRON PIN & CAP (8" DEEP)



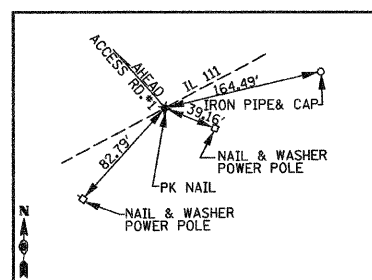
PT STA. 223+09.32 F.A.P. RTE. 310
IRON PIN & CAP (FLUSH)



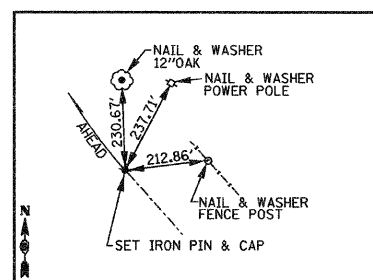
PI STA. 172+06.10 US. 67 (GODFREY RD.) =
PI STA. 1172+06.10 IL. 111
PK NAIL SET



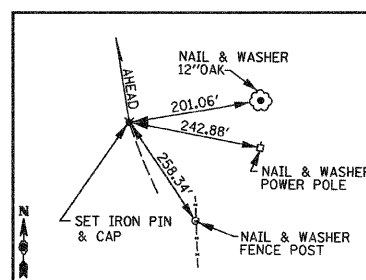
STATION EQUATION
177+10.39 BK. = 45+00 AH. US. 67 (GODFREY RD.)
SET PK NAIL



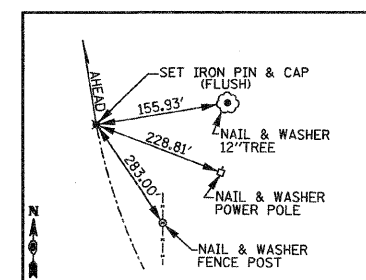
PI STA. 10+00 ACCESS ROAD #1
STA. 1193+12.90 IL 111
PK NAIL



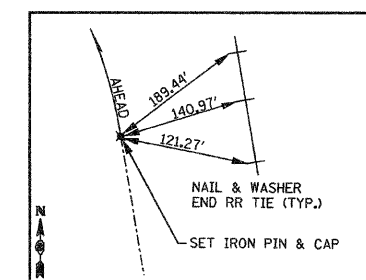
PC STA. 13+47.34 ACCESS ROAD #1
SET IRON PIN & CAP (FLUSH)



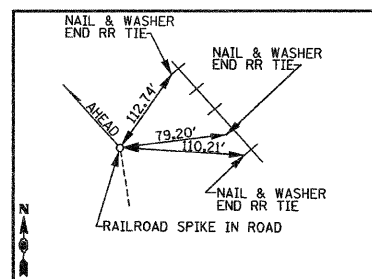
PI STA. 14+25 ACCESS ROAD #1
SET IRON PIN & CAP (FLUSH)



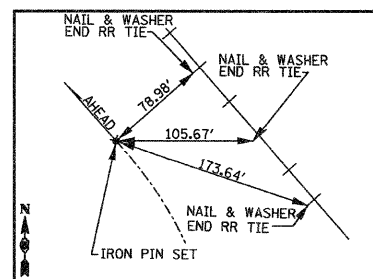
PT STA. 14+98.43 ACCESS ROAD #1
SET IRON PIN & CAP (FLUSH)



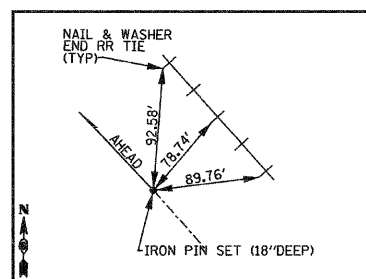
PC STA. 17+13.63 ACCESS ROAD #1
SET IRON PIN & CAP (FLUSH)



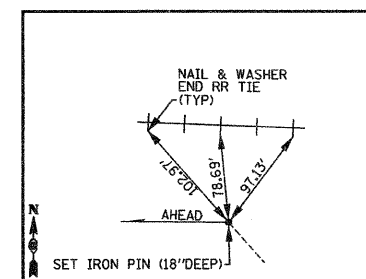
PI STA. 17+91.29 ACCESS ROAD #1
RAILROAD SPIKE IN ROAD



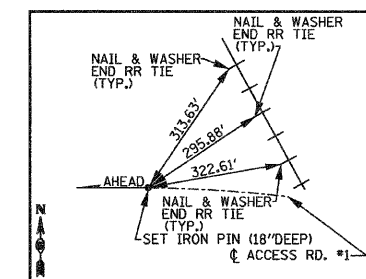
PT STA. 18+64.72 ACCESS ROAD #1
SET IRON PIN & CAP (FLUSH)



PC STA. 36+19.46 ACCESS ROAD #1
IRON PIN (18" DEEP)



PI STA. 39+11.97 ACCESS ROAD #1
SET IRON PIN (18" DEEP)



PT STA. 41+70.13 ACCESS ROAD #1
IRON PIN (18" DEEP)

REVISIONS	
NAME	DATE

ILLINOIS DEPARTMENT OF TRANSPORTATION

REFERENCE TIES

SCALE: NO SCALE
DATE: 09-04-09

DRAWN BY: U.J.
CHECKED BY: J.J.C.