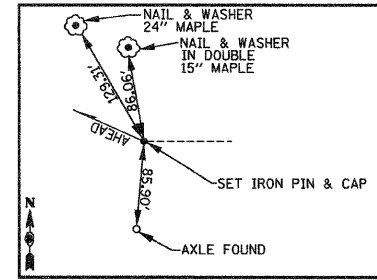
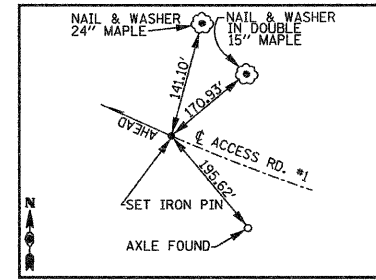


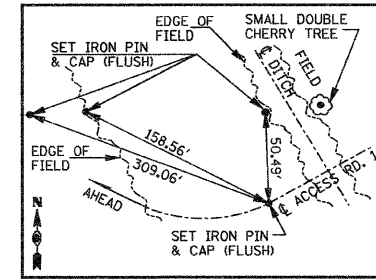
PC STA. 45+41.13 ACCESS ROAD #1
SET PK NAIL



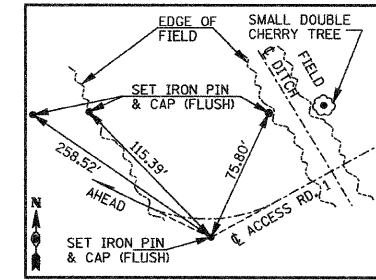
PI STA. 47+13.63 ACCESS ROAD #1
SET IRON PIN & CAP (FLUSH)



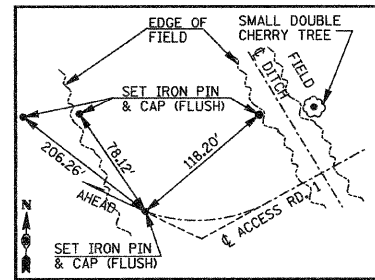
PT STA. 48+81.17 ACCESS ROAD #1
SET IRON PIN (18" DEEP)



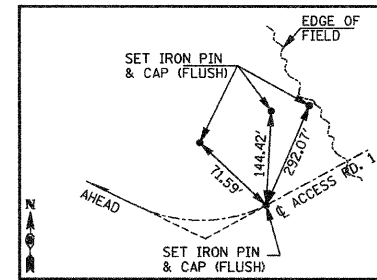
PC STA. 60+45.36 ACCESS ROAD #1
SET IRON PIN & CAP (FLUSH)



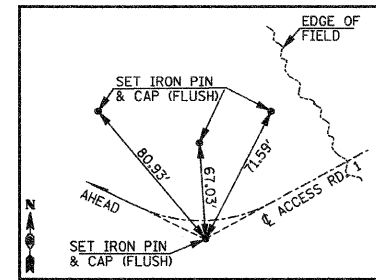
PI STA. 61+00.00 ACCESS ROAD #1
SET IRON PIN & CAP (FLUSH)



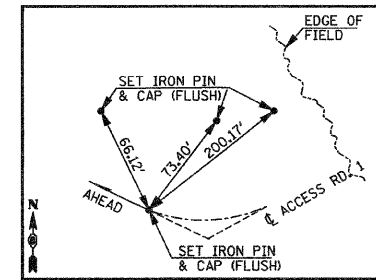
PT STA. 61+54.39 ACCESS ROAD #1



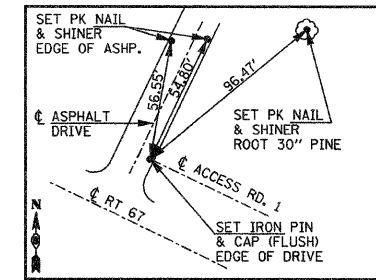
PC STA. 64+77.12 ACCESS ROAD #1
SET IRON PIN & CAP (FLUSH)



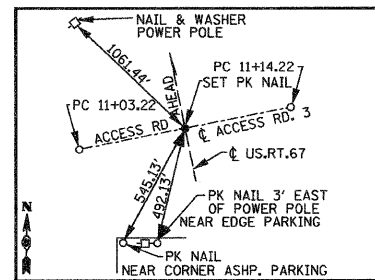
PI STA. 65+08.06 ACCESS ROAD #1
SET IRON PIN & CAP (FLUSH)



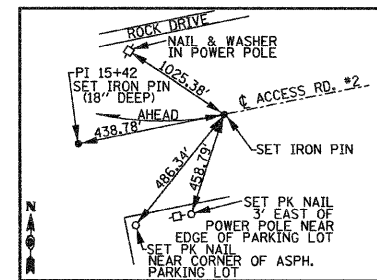
PT STA. 65+38.96 ACCESS ROAD #1
SET IRON PIN & CAP (FLUSH)



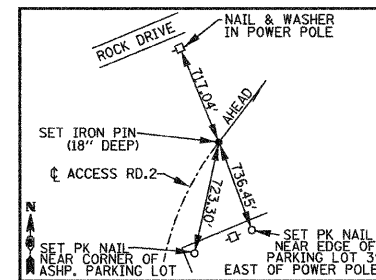
P.O.T. STA. 73+22.00 ACCESS ROAD #1
SET PK NAIL IN ASPHALT DRIVE
END CONSTRUCTION



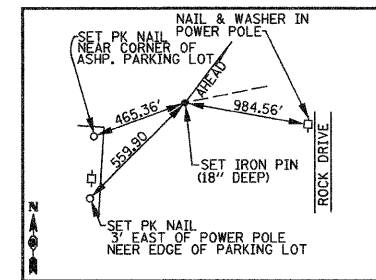
PI STA. 10+00 ACCESS ROAD #2 &
PI STA. 10+00 ACCESS ROAD #3 =
STA. 48+86.00 US. 67 (GODFREY RD.)



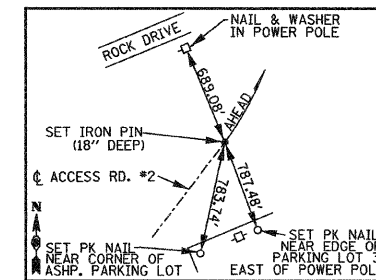
PC STA. 11+03.22 ACCESS ROAD #2
SET IRON PIN (18" DEEP)



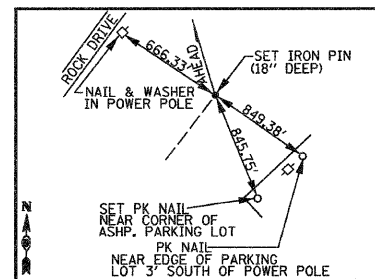
PT STA. 15+02.89 ACCESS ROAD #2
SET IRON PIN (18" DEEP)



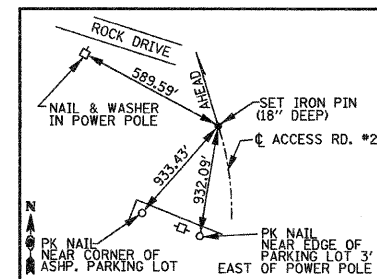
PI STA. 15+42 ACCESS ROAD #2
IRON PIN (18" DEEP)



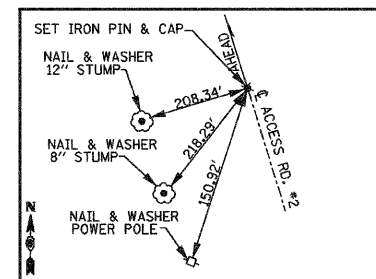
PC STA. 15+77.99 ACCESS ROAD #2
SET IRON PIN (18" DEEP)



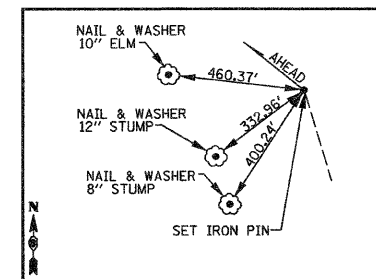
PI STA. 16+62.76 ACCESS ROAD #2
SET IRON PIN (18" DEEP)



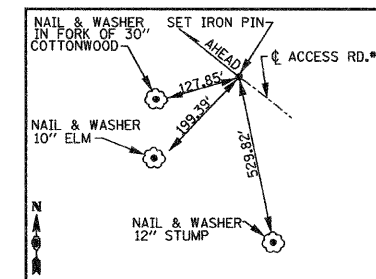
PT STA. 17+34.60 ACCESS ROAD #2
SET IRON PIN (18" DEEP)



PC STA. 25+99.68 ACCESS ROAD #2
IRON PIN & CAP (FLUSH)



PI STA. 29+19.79 ACCESS ROAD #2
SET IRON PIN (18" DEEP)



PT STA. 32+20.51 ACCESS ROAD #2
SET IRON PIN (18" DEEP)

REVISIONS	
NAME	DATE

ILLINOIS DEPARTMENT OF TRANSPORTATION

REFERENCE TIES

SCALE: NO SCALE
DATE: 09-04-09

DRAWN BY: U.J.
CHECKED BY: J.J.C.