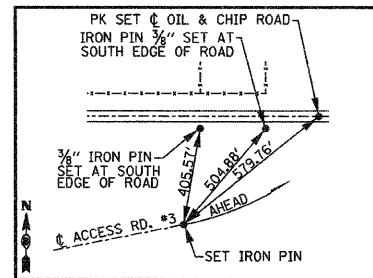
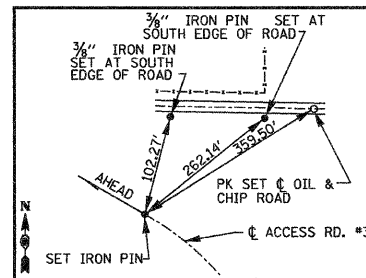


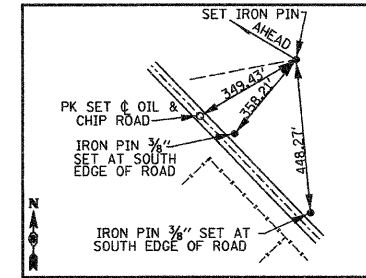
P.O.T. STA. 41+32.06 ACCESS ROAD #2
SET IRON PIN & CAP (FLUSH)



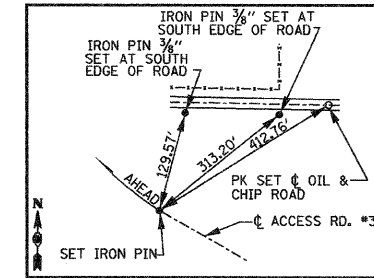
PC STA. 11+14.22 ACCESS ROAD #3
SET IRON PIN (18\"/>



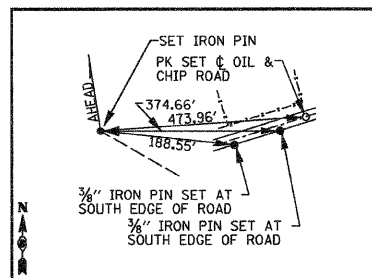
PT STA. 15+13.89 ACCESS ROAD #3
SET IRON PIN (18\"/>



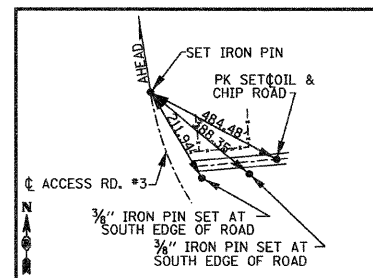
PI STA. 15+53 ACCESS ROAD #3
IRON PIN (18\"/>



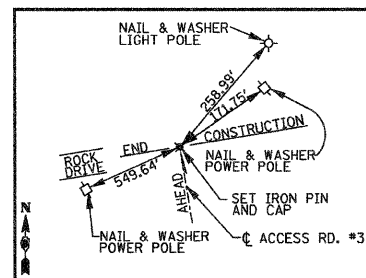
PC STA. 15+91.15 ACCESS ROAD #3
SET IRON PIN (18\"/>



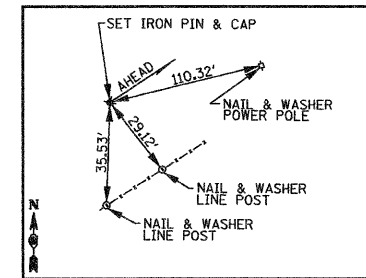
PI STA. 16+69.98 ACCESS ROAD #3
SET IRON PIN (18\"/>



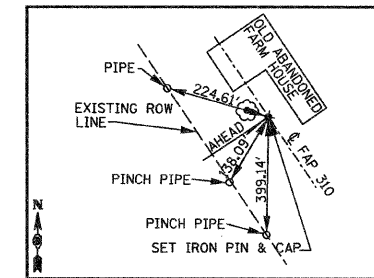
PT STA. 17+38.23 ACCESS ROAD #3
SET IRON PIN (18\"/>



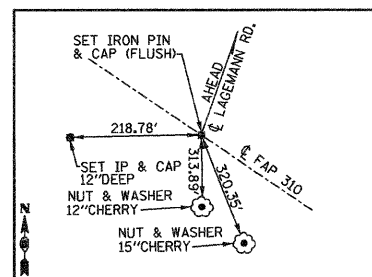
P.O.T. STA. 21+48.06 ACCESS ROAD #3
SET IRON PIN & CAP (FLUSH)



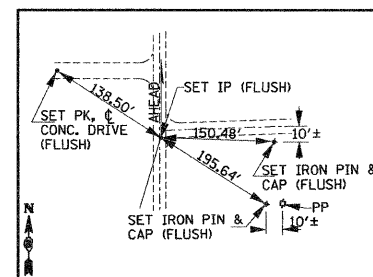
POT STA. 5+00.00 BEUTTEL ROAD
SET IRON PIN & CAP 1' RIGHT OF C.R. ROAD (FLUSH)



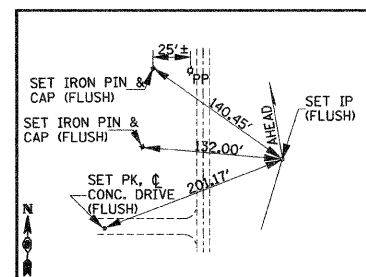
PI STA. 10+00 BEUTTEL ROAD =
STA. 148+46.71 STA. F.A.P. 310
SET IRON PIN & CAP (0.4' EXPOSED)



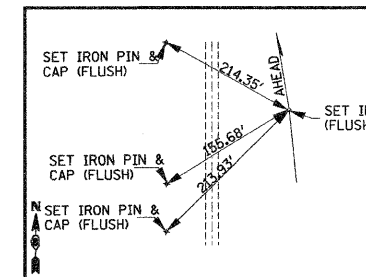
PI STA. 10+00.00 LAGEMANN RD. =
STA. 170+40.00 RT. F.A.P. 310
SET IRON PIN & CAP (FLUSH)



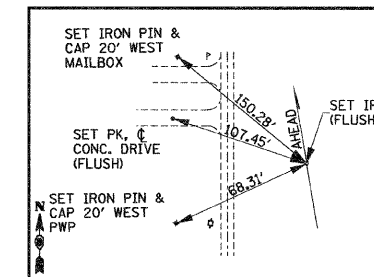
PC STA. 14+32.48 LAGEMANN ROAD
SET IRON PIN (FLUSH)



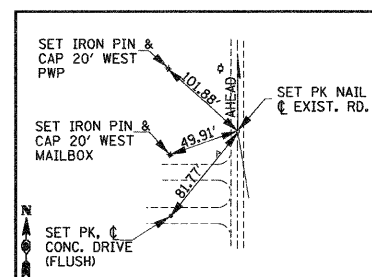
PI STA. 16+23.15 LAGEMANN ROAD
SET IRON PIN (FLUSH)



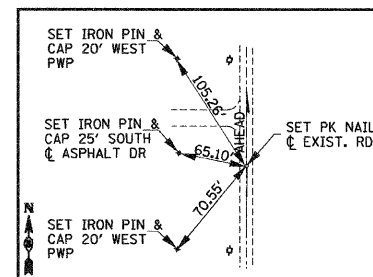
PT STA. 18+06.84 LAGEMANN ROAD
SET IRON PIN (FLUSH)



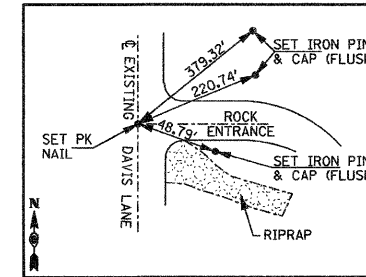
PC STA. 20+16.61 LAGEMANN ROAD
SET IRON PIN (FLUSH)



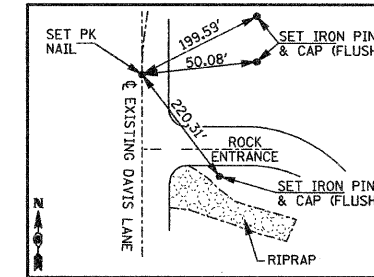
PI STA. 21+68.22 LAGEMANN ROAD
SET PK NAIL



PT STA. 23+19.66 LAGEMANN ROAD
SET PK NAIL



POT STA. 2+75 DAVIS LANE
SET PK NAIL



PC STA. 4+31.60 DAVIS LANE
SET PK NAIL

REVISIONS	
NAME	DATE

ILLINOIS DEPARTMENT OF TRANSPORTATION

REFERENCE TIES

SCALE: NO SCALE
DATE: 09-04-09

DRAWN BY: U.J.J.
CHECKED BY: J.J.C.