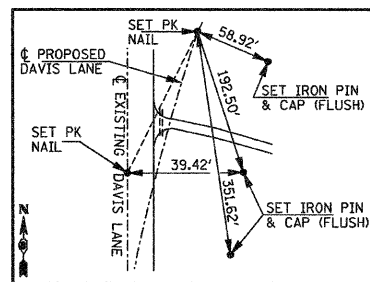
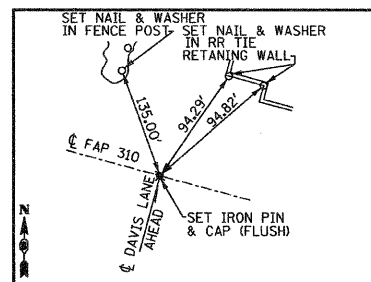


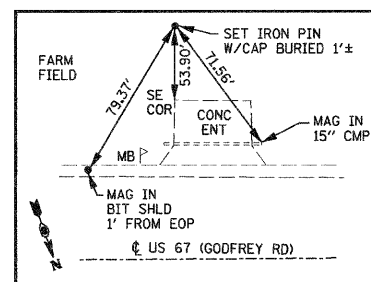
PI 6+27.03 DAVIS LANE
SET PK NAIL



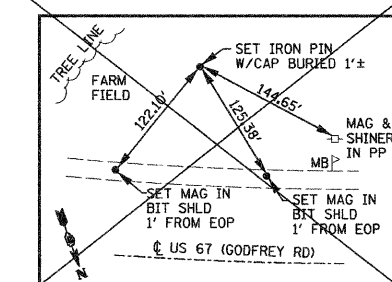
PT STA. 8+21.51 DAVIS LANE
SET IRON PIN & CAP (FLUSH)



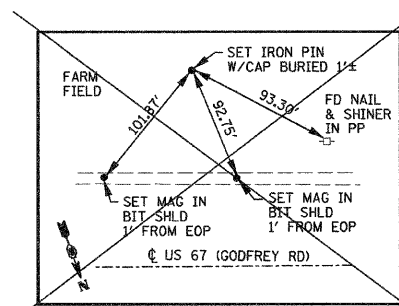
PI STA. 10+00.00 DAVIS LANE=
F.A.P. 310 STA. 202+26.40
SET IRON PIN & CAP (FLUSH)



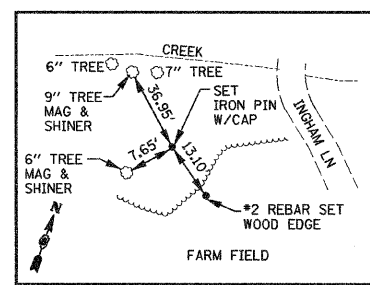
STA 0+00.00 RAMP "A"=
50' LT STA 104+76.50 FAP RTE 310
SET IRON PIN W/CAP BURIED



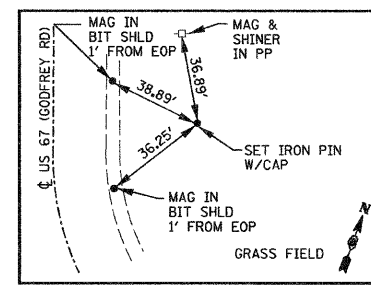
PC STA 1+86.11 RAMP "A"
SET IRON PIN W/CAP BURIED



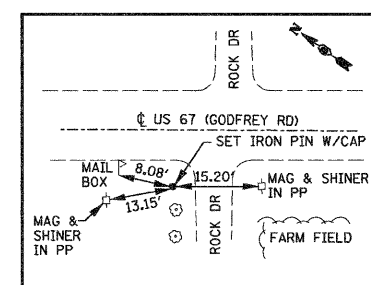
PT STA 4+79.52 RAMP "A"
SET IRON PIN W/CAP BURIED



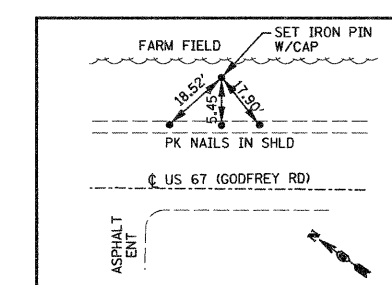
PC STA 8+08.74 RAMP "A"
SET IRON PIN W/CAP



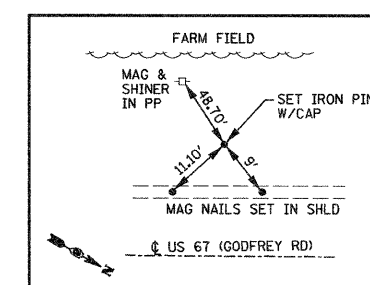
PT STA 14+15.25 RAMP "A"
SET IRON PIN W/CAP



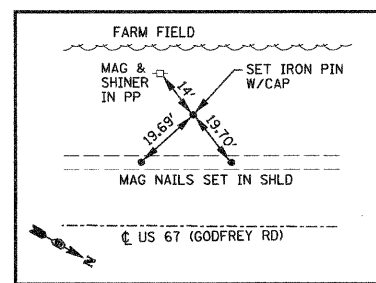
PC STA 18+15.66 RAMP "A"
SET IRON PIN W/CAP



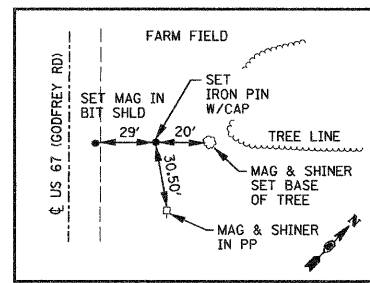
PT STA 21+85.76 RAMP "A"
SET IRON PIN W/CAP



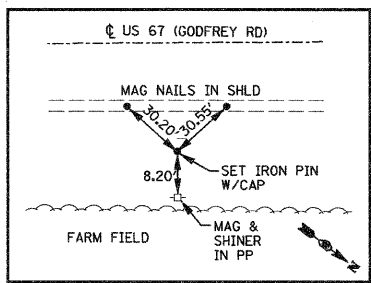
POT STA 22+86.36 RAMP "A"
SET IRON PIN W/CAP



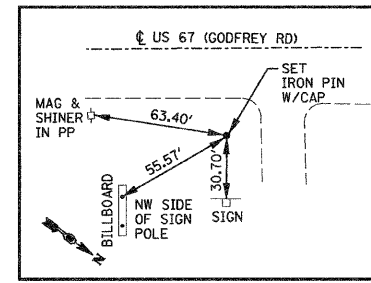
STA 28+28.22 RAMP "A"=
18' LT STA 47+89.46 US 67
SET IRON PIN W/CAP



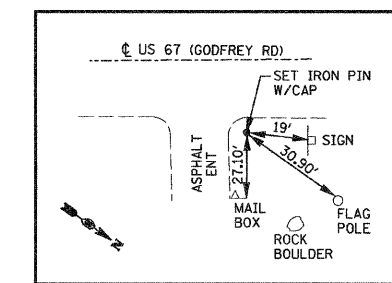
STA 0+00.00 RAMP "B"=
42' RT STA 47+89.46 US 67
SET IRON PIN W/CAP



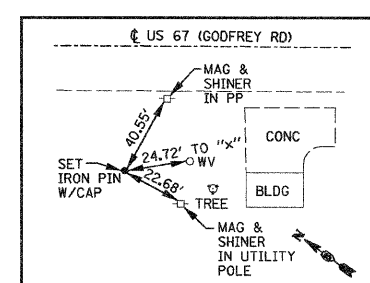
PI STA 2+19.76 RAMP "B"
SET IRON PIN W/CAP



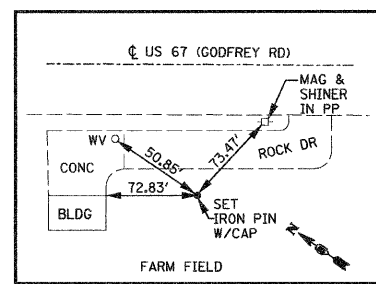
PI STA 5+41.86 RAMP "B"
SET IRON PIN W/CAP



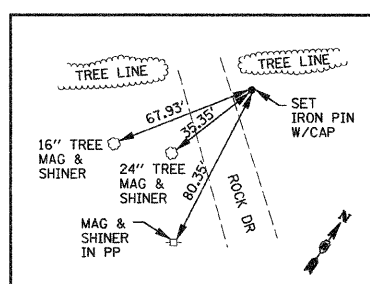
PC STA 6+02.46 RAMP "B"
SET IRON PIN W/CAP



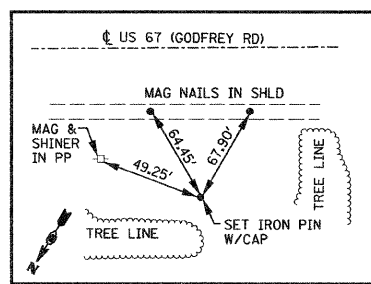
PT STA 11+56.35 RAMP "B"
SET IRON PIN W/CAP



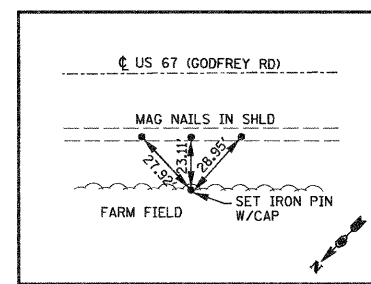
PC STA 12+89.52 RAMP "B"
SET IRON PIN W/CAP



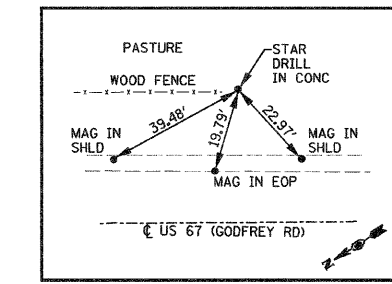
PT STA 30+26.40 RAMP "B"
SET IRON PIN W/CAP



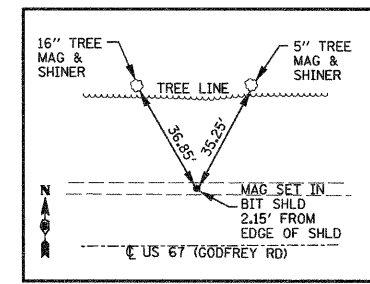
PC STA 31+90.97 RAMP "B"
SET IRON PIN W/CAP



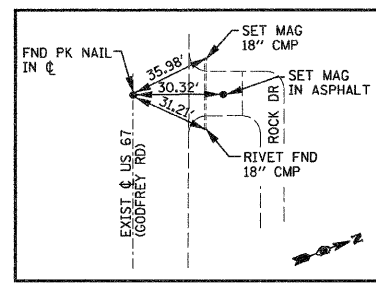
PCC STA 35+55.50 RAMP "B"
SET IRON PIN W/CAP



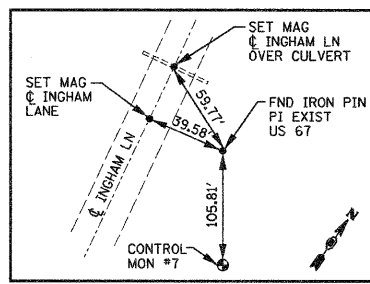
PT STA 40+76.45 RAMP "B"
CUT "X" IN CONCRETE



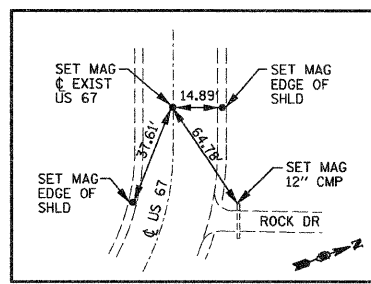
POT STA 47+03.34 RAMP "B"=
50' RT STA 122+00.00 FAP RTE 310
MAG SET IN BITUMINOUS SHOULDER



PC STA 61+68.11 EXIST US 67
FOUND PK NAIL IN CENTERLINE



PI STA 67+54.39 EXIST US 67
FOUND IRON PIN



PT STA 72+81.10 EXIST US 67
SET MAG NAIL IN CENTERLINE

REVISIONS	
NAME	DATE

ILLINOIS DEPARTMENT OF TRANSPORTATION

REFERENCE TIES

SCALE: NO SCALE
DATE: 09-04-09

DRAWN BY: U.J.
CHECKED BY: J.J.C.