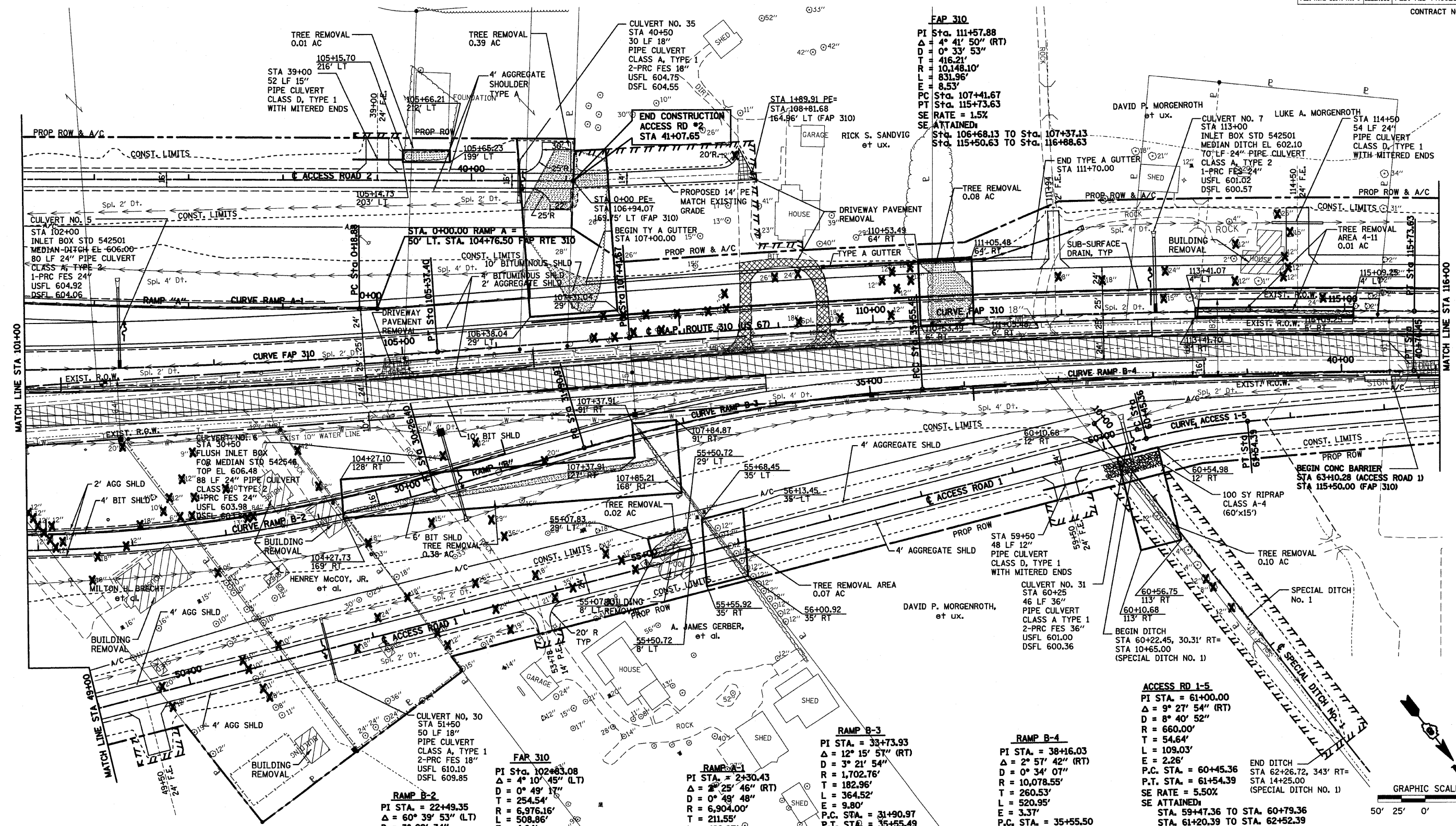


F.A.P. RTE.	SECTION	COUNTY	TOTAL SHEETS	SHEET NO.
310	60-16	MADISON	662	50
STA. 101+00		TO STA. 116+00		
FED. ROAD DIST. NO. 8 ILLINOIS FED. AID PROJECT				
CONTRACT NO. 76311				



RAMP B-2
 PI STA. = 22+49.35
 Δ = 60° 39' 53" (LT)
 D = 3° 29' 34"
 R = 1,640.42'
 T = 959.83'
 L = 1,736.88'
 E = 260.17'
 P.C. STA. = 12+89.52
 P.T. STA. = 30+26.40
 SE RATE = 6.00%
 SE ATTAINED:
 STA. 11+34.98 TO STA. 13+68.98
 STA. 29+18.89 TO STA. 31+04.89

FAP 310
 PI STA. 102+83.08
 Δ = 4° 10' 45" (LT)
 D = 0° 49' 17"
 T = 254.54'
 R = 6,976.16'
 L = 508.86'
 E = 4.64'
 PC STA. 100+28.54
 PT STA. 105+37.40
 SE RATE = 2.7%
 SE ATTAINED:
 Sta. 98+98.54 To Sta. 100+69.54
 Sta. 105+45.13 To Sta. 106+68.13

RAMP B-1
 PI STA. = 2+30.43
 Δ = 2° 25' 46" (RT)
 D = 0° 49' 48"
 R = 6,904.00'
 T = 211.55'
 L = 422.97'
 E = 3.24'
 P.C. STA. = 0+18.88
 P.T. STA. = 4+41.85
 SE RATE = 2.7%
 SE TRANSITION
 MATCH FAP 310

RAMP B-3
 PI STA. = 33+73.93
 Δ = 12° 15' 57" (RT)
 D = 3° 21' 54"
 R = 1,702.76'
 T = 182.96'
 L = 364.52'
 E = 9.80'
 P.C. STA. = 31+90.97
 P.T. STA. = 35+55.49
 SE RATE = 6.5%
 SE ATTAINED:
 Sta. 31+04.89 To Sta. 33+08.89
 Sta. 34+25.49 To Sta. 37+55.18

RAMP B-4
 PI STA. = 38+16.03
 Δ = 2° 57' 42" (RT)
 D = 0° 34' 07"
 R = 10,078.55'
 T = 260.53'
 L = 520.95'
 E = 3.37'
 P.C. STA. = 35+55.50
 P.T. STA. = 40+76.45
 SE RATE = 3.2%
 SE TRANSITION
 MATCH FAP 310

ACCESS RD 1-5
 PI STA. = 61+00.00
 Δ = 9° 27' 54" (RT)
 D = 8° 40' 52"
 R = 660.00'
 T = 54.64'
 L = 109.03'
 E = 2.26'
 P.C. STA. = 60+45.36
 P.T. STA. = 61+54.39
 SE RATE = 5.50%
 SE ATTAINED:
 STA. 59+47.36 TO STA. 60+79.36
 STA. 61+20.39 TO STA. 62+52.39

REVISIONS	
NAME	DATE

ILLINOIS DEPARTMENT OF TRANSPORTATION

**FAP RTE 310 (US 67),
 ACCESS RD 1 AND
 ACCESS RD 2**

SCALE: VERT.: 1"=50'
 HORIZ.: 1"=50'
 DATE: 09-04-09

DRAWN BY: TWC
 CHECKED BY: MAR

