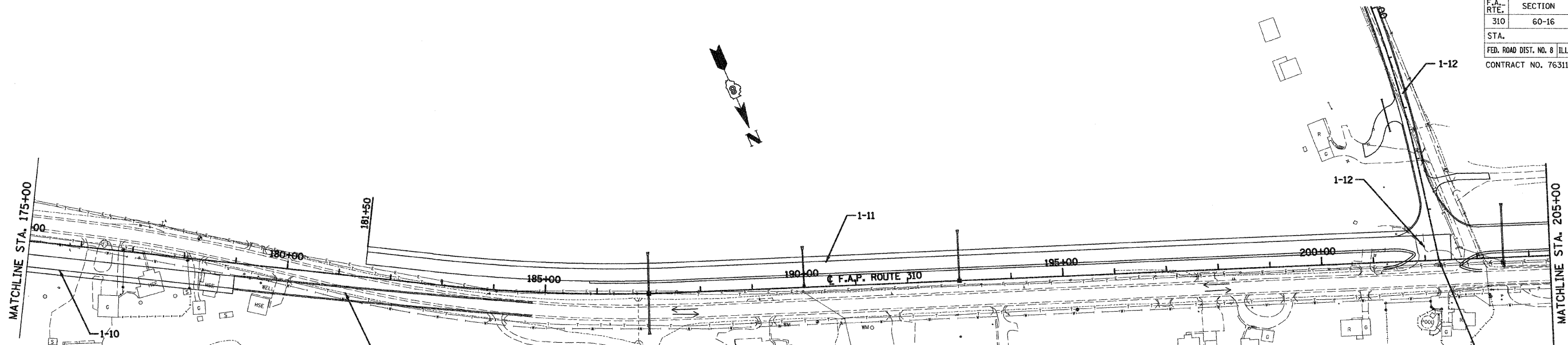


F.A. RTE.	SECTION	COUNTY	TOTAL SHEETS	SHEET NO.
310	60-16	MADISON	662	79
STA.		TO STA.		
FED. ROAD DIST. NO. 8		ILLINOIS	FED. AID PROJECT	
CONTRACT NO. 76311				

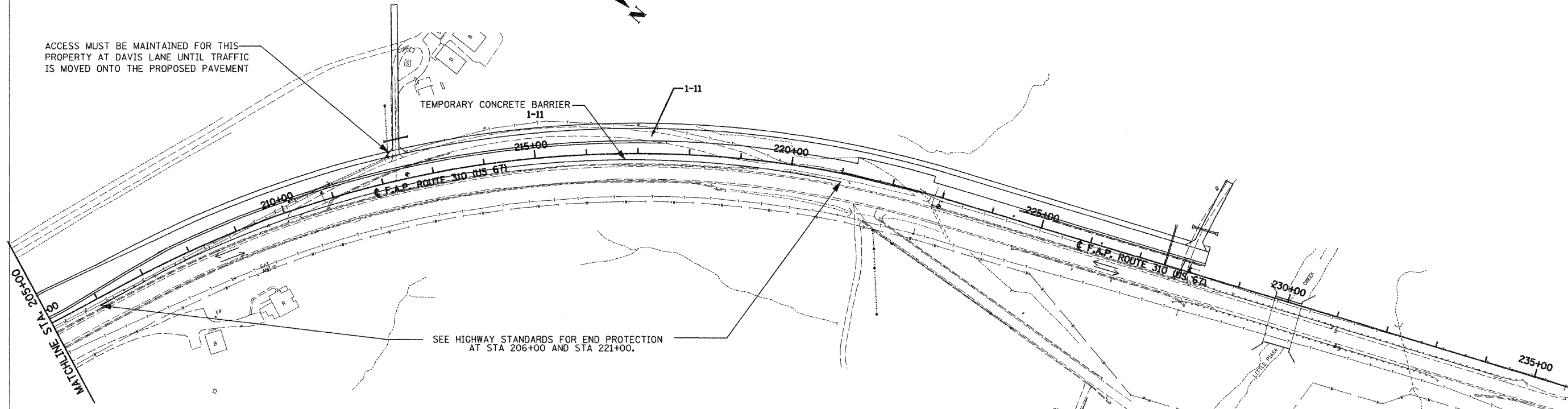


STA. EQUATION:
 STA. 202+26.40 (F.A.P. RTE 310)
 STA. 10+00 (DAVIS LN.)

ACCESS MUST BE MAINTAINED FOR THIS PROPERTY AT DAVIS LANE UNTIL TRAFFIC IS MOVED ONTO THE PROPOSED PAVEMENT

TEMPORARY CONCRETE BARRIER
1-11

SEE HIGHWAY STANDARDS FOR END PROTECTION AT STA 206+00 AND STA 221+00.



REVISIONS	
NAME	DATE

ILLINOIS DEPARTMENT OF TRANSPORTATION

STAGE 1 CONSTRUCTION

SCALE: VERT.
 HORIZ.
 DATE: 09-04-09

DRAWN BY: U.J.
 CHECKED BY: J.J.C.