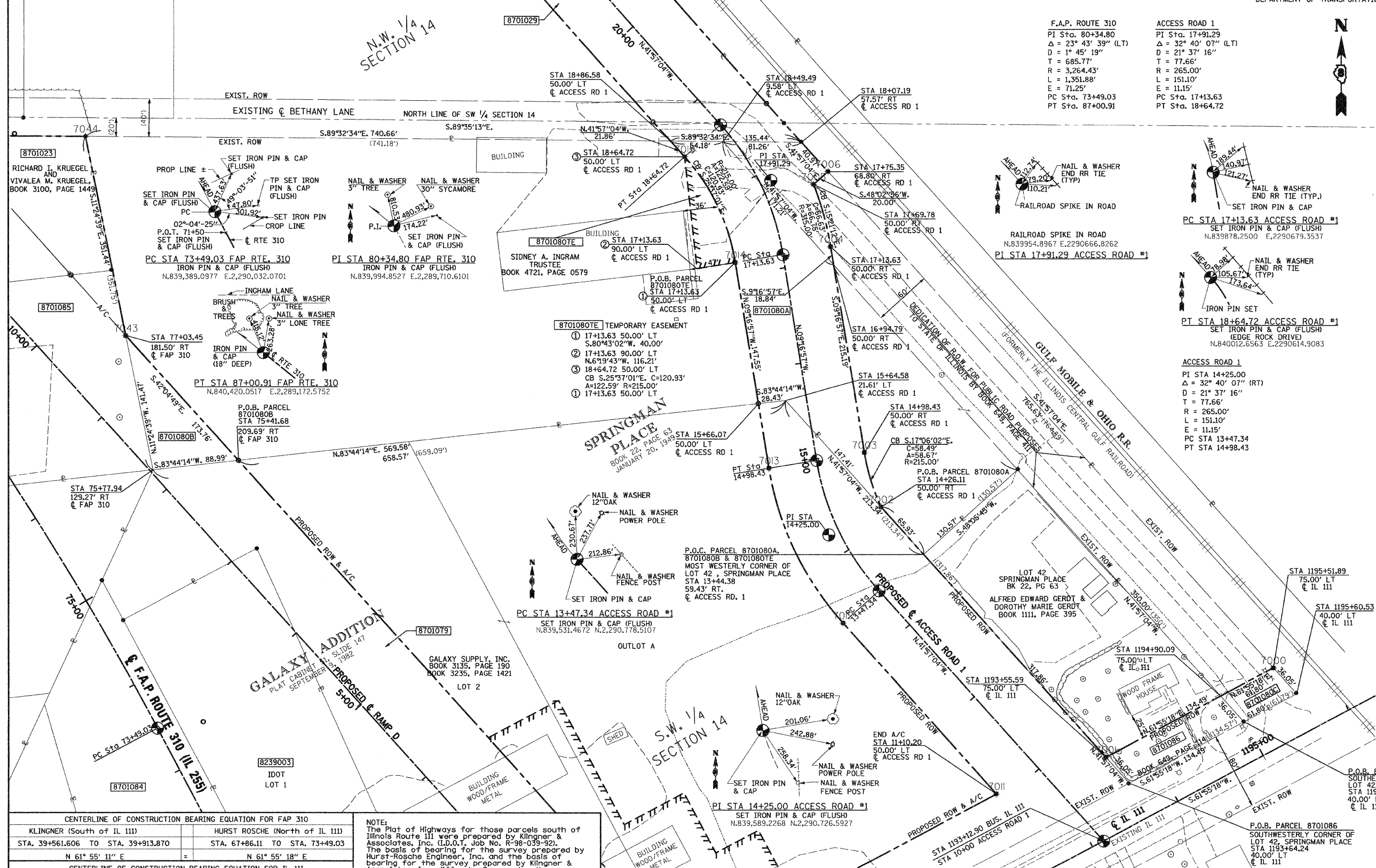


PART OF THE SW 1/4 OF SECTION 14, T6N, R10W, OF THE 3RD PM, MADISON COUNTY, ILLINOIS

FAP ROUTE	SECTION	COUNTY	TOTAL SHEETS	SHEET NO.
310	60-15, 60-16	MADISON	662	134
STA 72+00	TO STA 76+00			
FED. ROAD DIST. NO.		ILLINOIS	FED. AID PROJECT	
CONTRACT NO. 76311				



STATE OF ILLINOIS)
 COUNTY OF) SS

THIS IS TO CERTIFY THAT I, JEFFREY B. MEYER AN ILLINOIS PROFESSIONAL LAND SURVEYOR, HAS SURVEYED THE PLAT OF HIGHWAYS SHOWN HEREON IN SECTION 14, TOWNSHIP 6 NORTH, RANGE 10 WEST, OF THE THIRD PRINCIPAL MERIDIAN, MADISON COUNTY, THAT THE SURVEY IS TRUE AND COMPLETE AS SHOWN TO THE BEST OF MY KNOWLEDGE AND BELIEF, THAT THE PLAT CORRECTLY REPRESENTS SAID SURVEY, THAT ALL MONUMENTS FOUND AND ESTABLISHED ARE OF PERMANENT QUALITY AND OCCUPY THE POSITIONS SHOWN THEREON AND THAT THE MONUMENTS ARE SUFFICIENT TO ENABLE THE SURVEY TO BE RETRACED. MADE FOR THE DEPARTMENT OF TRANSPORTATION, STATE OF ILLINOIS.

DATED _____

JEFFREY B. MEYER, PLS No. 035-002977
 LICENSE EXPIRES NOVEMBER 30, 2010

CENTERLINE OF CONSTRUCTION BEARING EQUATION FOR FAP 310	
KLINGNER (South of IL 111)	HURST ROSCHE (North of IL 111)
STA. 39+561.606 TO STA. 39+913.870	STA. 67+86.11 TO STA. 73+49.03
N 61° 55' 11" E	= N 61° 55' 18" E
CENTERLINE OF CONSTRUCTION BEARING EQUATION FOR IL 111	
KLINGNER	HURST ROSCHE
N 27° 57' 21" W	= N 27° 57' 14" W

NOTE:
 The Plat of Highways for those parcels south of Illinois Route 111 were prepared by Klingner & Associates, Inc. (I.D.O.T. Job No. R-98-039-92). The basis of bearing for the survey prepared by Hurst-Rosche Engineers, Inc. and the basis of bearing for the survey prepared by Klingner & Associates, Inc. differ by 7 seconds. However, the physical location of the proposed centerline of construction for FAP Route 310 and Illinois Route 111 are equal.

PARCEL 8701080A = 0.7447 AC, 32,441 SF (0.1321 AC, 5,756 SF PREV. DEDICATED)
 PARCEL 8701080B = 0.1439 AC, 6,269 SF
 PARCEL 8701080C = 0.0497 AC, 2,163 SF (0.0497 AC, 2,163 SF PREV. DEDICATED)

PARCEL 8701080 REMAINDER WEST = 4.3671 AC, 190,232 SF
 PARCEL 8701080 REMAINDER EAST = 1.4451 AC, 62,949 SF (0.9003 AC, 39,218 SF PREV. DEDICATED)

PARCEL NO.	OWNER/TITLE REPORT NO.	TOTAL HOLDING	R.O.W. REQUIRED	PREVIOUSLY DEDICATED	REMAINDER	EASEMENTS		EASEMENT PURPOSE	PERMANENT TAX NUMBER	PROPERTY ACQUIRED BY
						TEMP	PERM			
8701080	SIDNEY A. INGRAM MA-1357 AS TRUSTEE UNDER SELF DECLARATION OF TRUST DATED THE 9TH DAY OF SEPTEMBER 1998	6.7506 AC 294,054 SF	0.9383 AC 40,873 SF	0.1818 AC 7,919 SF	5.8123 AC 253,181 SF	0.0694 AC 3,024 SF	N/A	ENTRANCE CONST.	24-1-01-14-00-000-007.006	
8701086	ALFRED EDWARD GERDT MA-1356 AND DOROTHY MARIE GERDT, HIS WIFE, AS JOINT TENANTS	1.0009 AC 43,601 SF	0.1081 AC 4,707 SF		0.8928 AC 38,894 SF	N/A	N/A		24-2-01-14-03-301-025	

COORDINATES SHOWN HEREON ARE BASED ON SURVEY CONTROL DATA AS PROVIDED BY THE ILLINOIS DEPARTMENT OF TRANSPORTATION.

STATION	OFFSET	NORTH	EAST	STATION	OFFSET	NORTH	EAST
75+77.94	129.27' RT	839,655.8216	2,290,027.4312	14+98.43	50.00' RT	839,673.9391	2,290,763.4105
77+03.45	181.50' RT	839,794.4939	2,289,999.4426	14+26.11	50.00' RT	839,618.0322	2,290,780.6104
75+41.68	209.69' RT	839,665.5296	2,290,115.8902	15+64.58	21.61' LT	839,727.6647	2,290,682.0659
15+66.07	50.00' LT	839,724.5636	2,290,653.8093	18+49.49	9.58' LT	839,995.0567	2,290,617.2819
17+13.63	50.00' LT	839,870.1847	2,290,630.0084	16+94.79	50.00' RT	839,867.7225	2,290,731.7377
18+64.72	50.00' LT	839,979.2312	2,290,577.7228	1193+55.59	75.00' LT	839,359.4155	2,291,013.0711
18+86.58	50.00' LT	839,995.4889	2,290,563.1093	1194+90.09	75.00' LT	839,422.7186	2,291,131.7351
18+07.19	57.57' RT	839,994.4083	2,290,698.5408	1195+51.89	75.00' LT	839,451.8078	2,291,186.2639
17+75.35	68.80' RT	839,963.9352	2,290,725.9319				
17+69.78	57.00' RT	839,950.5652	2,290,711.0576				
17+13.63	50.00' RT	839,886.3151	2,290,728.6989				

HR HURST-ROSCH ENGINEERS, INC.
 140 E. TRUMBULL STREET
 P.O. BOX 120
 ILLINOIS, ILLINOIS 62409
 PH: 217 632-3959; FAX: 217 632-3212
 PROFESSIONAL DESIGN FIRM No. 184-000298

ILLINOIS DEPARTMENT OF TRANSPORTATION
PLAT OF HIGHWAYS
 FAP ROUTE 310 (US 67 & IL 255)
 SECTION 60-16, 60-15
 MADISON COUNTY
 JOB NO. R-98-001-97/R-98-039-92

STATION 72+00 TO STATION 78+00
 SCALE: 1" = 50'

SHEET 13 OF 29

ILLINOIS DEPARTMENT OF TRANSPORTATION
 DIVISION OF HIGHWAYS/DISTRICT 8
 1102 EASTPORT PLAZA DRIVE
 COLLINGSVILLE, ILLINOIS 62234-6198

DATE: 3-25-02
 DRAWN BY: JBM
 CHECKED BY: JBM
 REF: EX-107
 REF: EX-107
 REF: EX-107
 REF: EX-107